

Double Chamber Bandpass System **TSE infra**



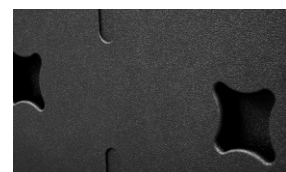
The TSE infra is a large volume, high power Subwoofer particularly suited to applications which demand long throw, high efficiency low bass reproduction. The 2 chamber, horn loaded band pass operating principle of the TSE infra allows it to operate effectively over a very wide frequency range from 35 Hz to 130 Hz. A range of power handling capacities are available to suit individual applications.

PRODUCT SPECIFICATIONS

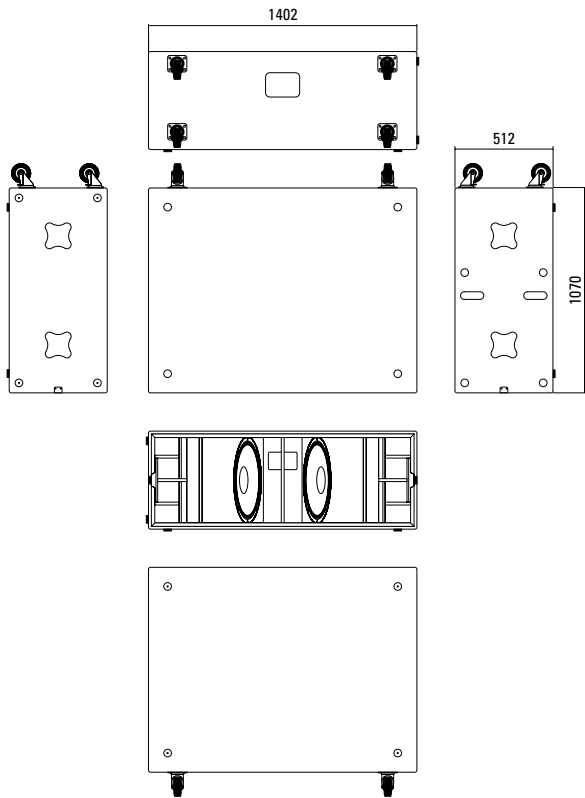
Speaker Components	2 x 18"
Description	Passive Bass Extension
Power AES / Peak	1600 W / 4800 W 3000 W / 9000 W (3 kW - version)
Impedance nominal	4 Ω
SPL 1 W/ Peak @ 1 m	106 dB / 142 dB
Usable Range - 6 dB	35 Hz - 130 Hz
Tuning Frequency excursion minimum	40 Hz / 70 Hz
Connectors	2 x Neutrik Speakon NL4MP in/out Coding: 1+/- loop thru, 2+/- Sub
Handles	4 x
Rigging / Fittings	Protection board fittings
Weight	105,0 kg (+ 9,0 kg protection board)
Size height x width x depth	51,2 x 140,2 x 107,0 cm
Order No.	00920 (1600 W AES, 4 Ω) 00920/3KW (3000 W AES, 4 Ω)



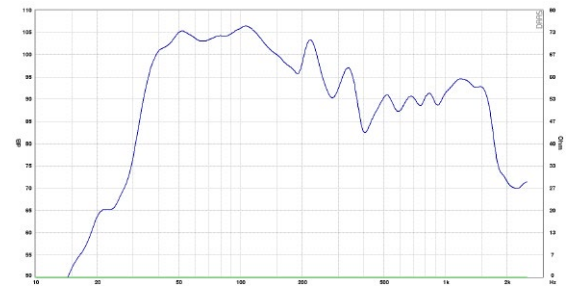
Removable protection board.



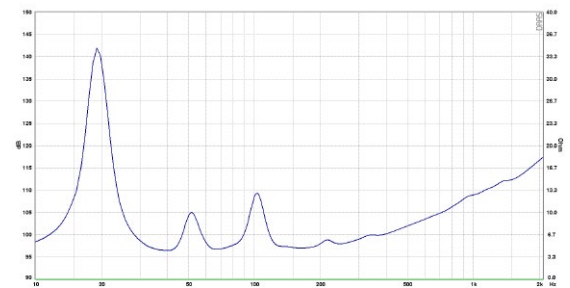
DIMENSIONS



Presets - Frequency Response



Impedance



Controller Setups are available on our website:

<http://www.seeburg.net/downloads.php>

ACCESSORIES TSE infra

Protection Board

for TSE infra,
9 kg

Order No. **01268**



Protection Board.