

Horn loaded high-power loudspeaker with integral digital amplifiers offering 2x 1000 watts total output power and is controlled by a DSP.

The speaker components (12" neodym, 1,4" neodym) are driven by separate amplifiers.

Several factory set volume settings & presets can be recalled.

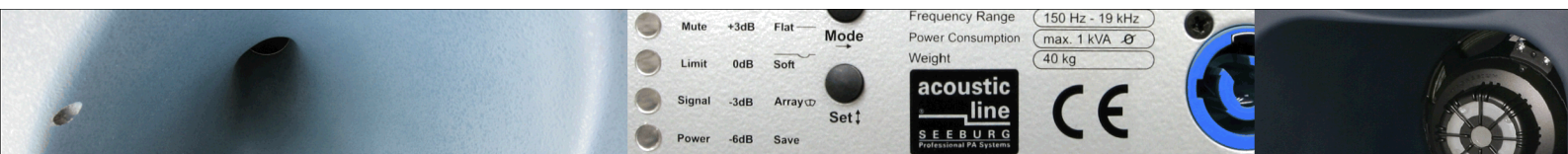
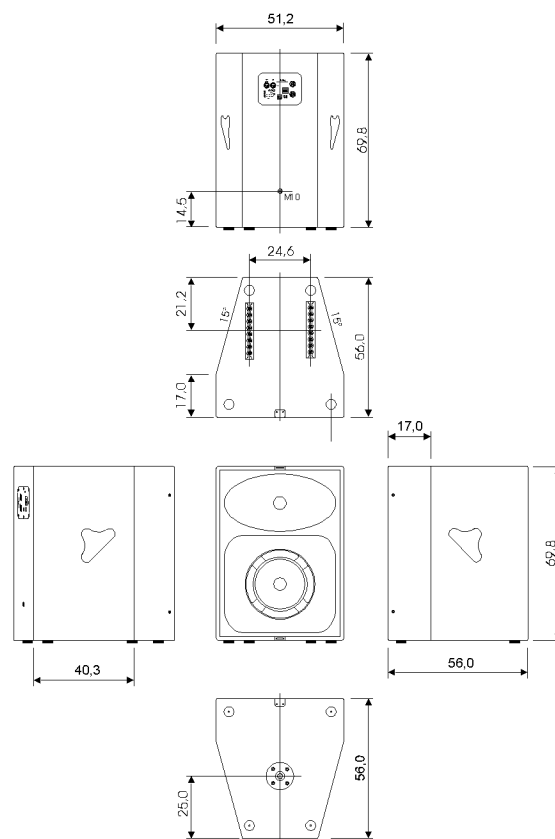
Extraordinary fidelity and capability to accept very high input levels is assured by first class design and high quality industrial electronic components, also minimizing noise.

A high effective and intelligent limiting system guarantees overload protection without limiting system capabilities.



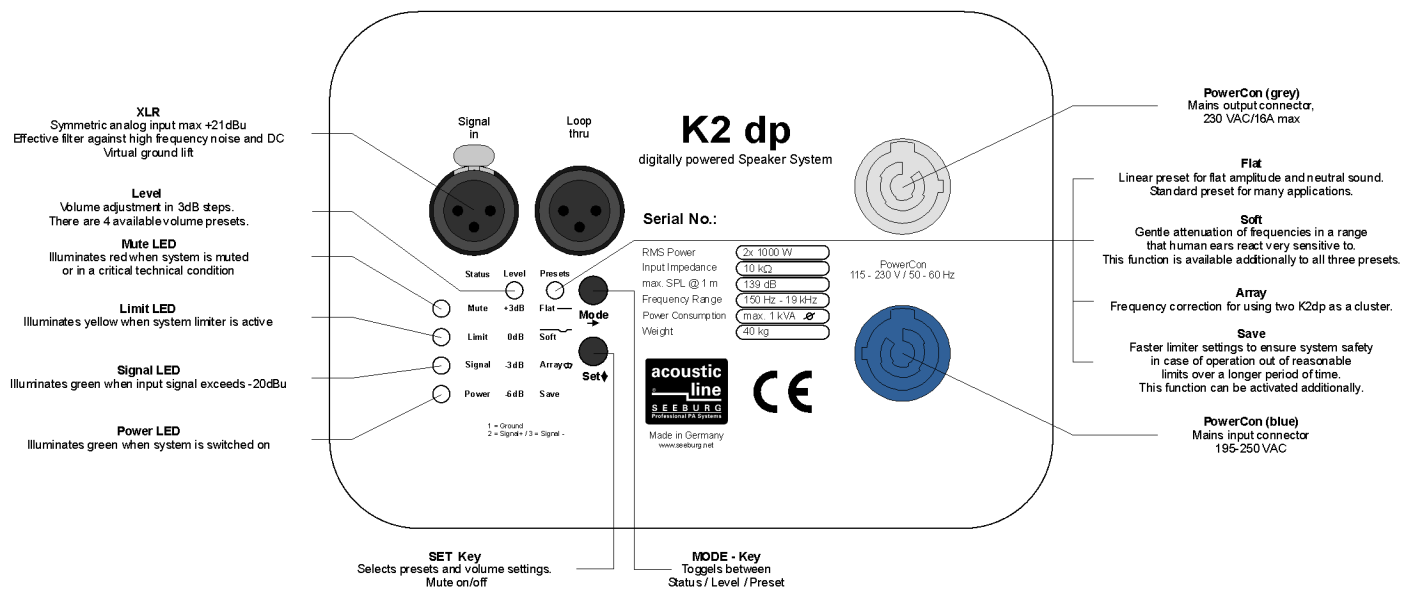
## PRODUCT SPECIFICATIONS

|   |                                      |
|---|--------------------------------------|
| Speaker Components                                      | 12" Neodym / 1,4" Neodym             |
| Description   | Hornloaded HiMid System              |
| Power   | 2x 1000 W EIA / 195-250 VAC          |
| Max Line Input  | +21dBu                               |
| DSP   | 32bit RISC                           |
| Internal Signal Path                                    | 32bit fixed-point, 64bit accumulator |
|   | 64bit IIR-coefficients               |
| AD/DA   | 24bit / 48kHz                        |
| Latency   | 1.54ms (analog in to analog out)     |
| Signal/Noise Ratio                                      | 115dB                                |
| All components comply with industrial temperature range |                                      |
| SPL max 1m  | 139dB                                |
| Frequency Range   | 150Hz - 19kHz (Flat-Preset)          |
| X - Overpoint - acoustical                              | 650Hz                                |
| Connectors  | Neutrik XLR in/out                   |
|   | Neutrik PowerCon in/out              |
| Coverage - horizontal / vertical                        | 60° x 40°                            |
| Handles   | 2x 3D handle                         |
| Rigging - flying points                                 | 2x 225mm Flying Tracks               |
|   | 1x M10                               |
| Fittings  | M20 in the bottom                    |
|   | wheelboards fittings                 |
| Weight  | 40kg                                 |
| Size - height x width x depth                           | 69,8 x 51,2 x 56,0 cm                |
| Order Number  | 1025 dp                              |

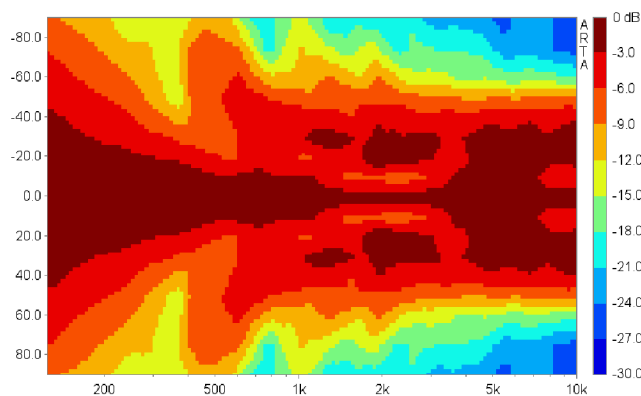


# K2dp

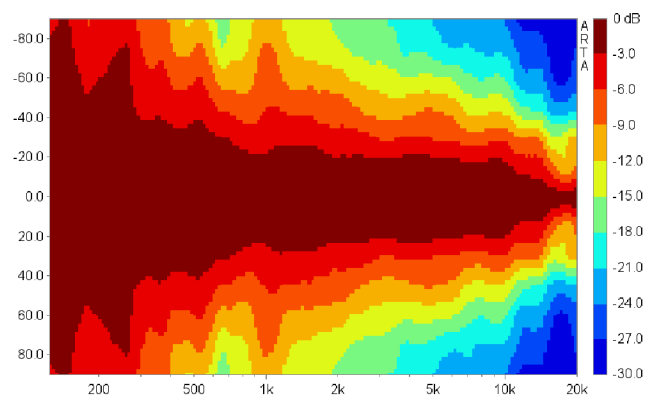
digitally powered HiMid System



2x K2dp Array - horizontal - 2D Directivity Plot



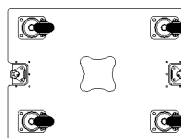
K2dp single - horizontal - 2D Directivity Plot



## Accessories

( additional accessories you will find in our general catalogue )

Wheelboard / Frontcover for K2 / K2dp



Order Number: 01260

Cover for K2 / K2dp - padded



Order Number: 01254