



The high-performance top K 24 is suitable for all sound applications requiring a fast set-up, very high power reserves and a good sound. The 2 x 12" / 1.4" combination weighs just 35 kg including the integrated flying hardware, can be hung one above the other for longer arrays and is extremely compact. The optional flying bracket is very simple to attach using the ball lock pin and can be adjusted to the desired angle. For operation with a single amplifier channel, the system is also available in the xov version with an integrated switchable passive crossover.

PRODUCT SPECIFICATIONS

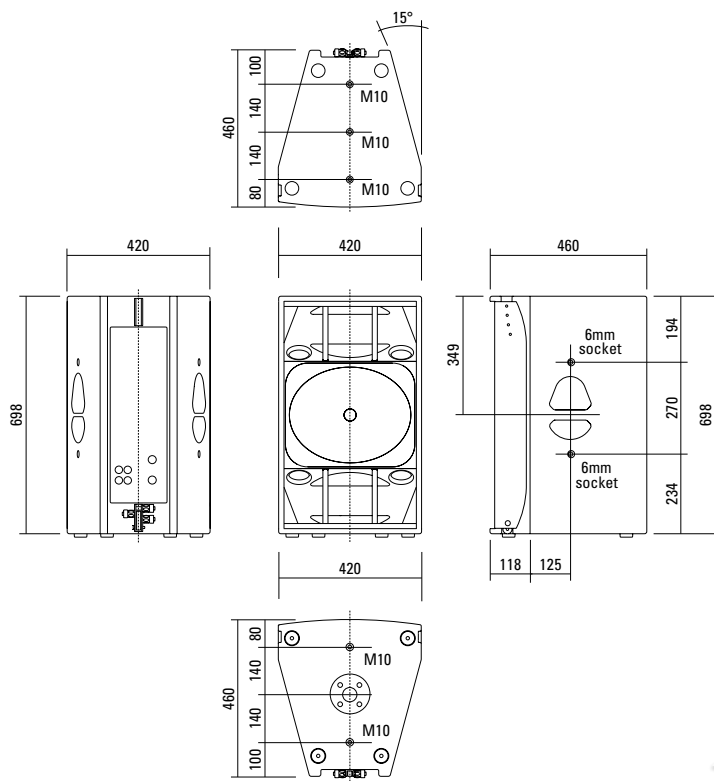
	K 24 a	K 24 xov
Speaker Components	2 x 12" Nd / 1.4" Nd	2 x 12" Nd / 1.4" Nd
Description	High Power HiMid System	High Power HiMid System
Power AES / Peak	LF: 800 W / 2400 W HF: 80 W / 240 W	800 W / 2400 W
Impedance nominal	LF: 4 Ω / HF: 8 Ω	4 Ω
SPL 1 W / Peak @ 1 m	LF: 104 dB / 138 dB HF: 111 dB / 139 dB	104 dB / 139 dB
Usable Range	75 Hz - 19 kHz (-6 dB)	75 Hz - 19 kHz (-6 dB)
Tuning Frequency excursion minimum	85 Hz	85 Hz
X-Overpoint acoustical	800 Hz	800 Hz
Coverage horizontal / vertical	60° x 50° (60°-version) 90° x 50° (90°-version)	60° x 50° (60°-version) 90° x 50° (90°-version)
Max. Splay Angle	12°	12°
Connectors	2 x Speakon NL4MP in/out Coding: 1 +/- HF, 2 +/- LF	2 x Speakon NL4MP in/out Coding: 1 +/- HiMid, 2 +/- loop thru
Handles	2 x	2 x
Rigging / Fittings	5 x M10 / 4 x 6 mm socket Integrated flying hardware 35 mm pole mount	5 x M10 / 4 x 6 mm socket Integrated flying hardware 35 mm pole mount
Weight	35 kg (+ 7 kg wheel board)	37 kg (+ 7 kg wheel board)
Size height x width x depth	70,0 x 42,0 x 46,0 cm	70,0 x 42,0 x 46,0 cm
Order No.	01029/a/60° (60°-version) 01029/a/90° (90°-version)	01029/xov/60° (60°-version) 01029/xov/90° (90°-version)



The integrated Flying System with adjustable Splay Angles.



DIMENSIONS

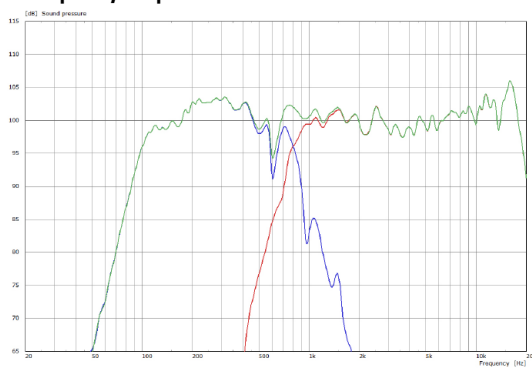


Controller Setups:

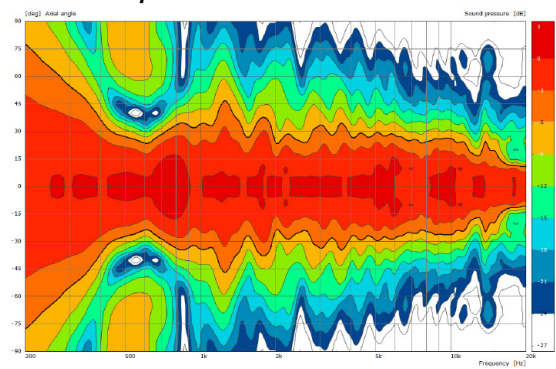
<https://www.seeburg.com/en/downloads>

MEASUREMENTS

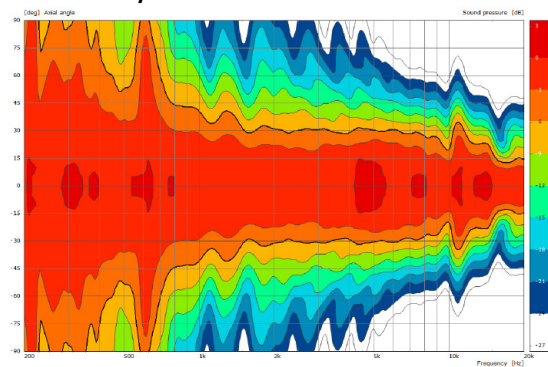
Frequency Response with Preset



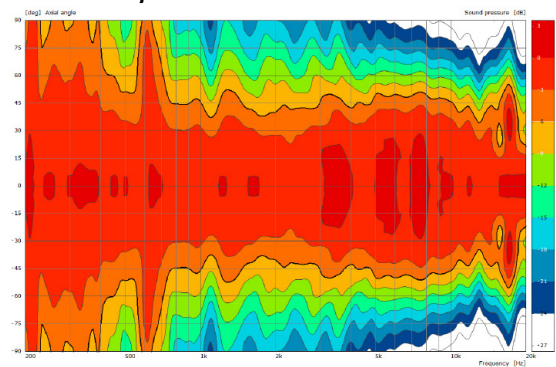
2D Directivity Plot - vertical



2D Directivity Plot - horizontal 60°



2D Directivity Plot - horizontal 90°



The technical performance features of the K 24 and its exceptional compactness were only possible by means of a complex acoustic interplay between the individual components and their control systems.

As a result, the performance characteristics and quality attributes were optimised to such a level that they are able to compete with and even surpass significantly larger systems.

To increase the degree of efficiency, the two 12" low-midrange speakers are initially directed into an acoustic bandpass and then into a hybrid horn. The symmetrical set-up ensures even and balanced coverage.

The generously dimensioned elliptical horn featuring a curved design for wide coverage ensures a highly accurate and long throw.

The cabinet is fitted with a sophisticated reinforcement system in order to prevent unwanted resonance.



K 24

The drivers are installed such that the voice coils are in the same vertical plane to ensure phase coherence even when using the passive crossover.





The integrated Flying System



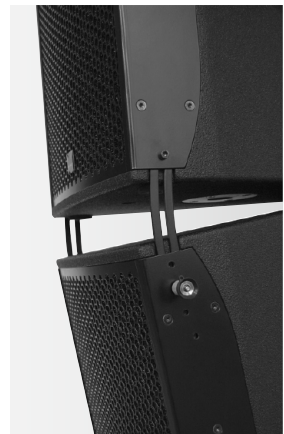
The Flying Cradle – up to three K 24 systems can be flown vertically.



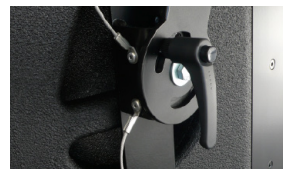
Simple interconnection of systems by means of integrated Spacer.



Spacer with "parking space" for the Ball Lock Pin.



Integrated Flying System with four adjustable Splay Angles.



Bracket



K 24 as Stack
with K Sub 1801.

Accessories



Removable Wheel Board for simple transportation.



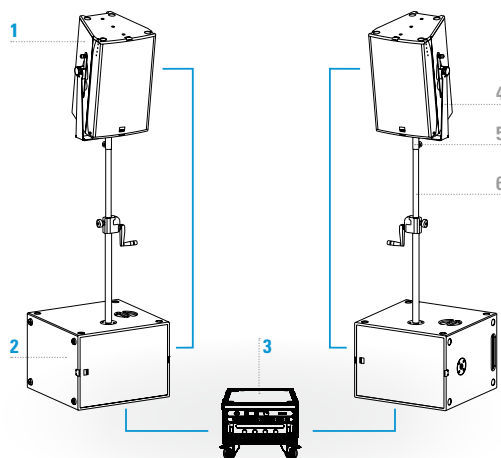
The Flying Bracket is very simple to attach using the Ball Lock Pin and can be adjusted to the desired angle.



The K 24 System

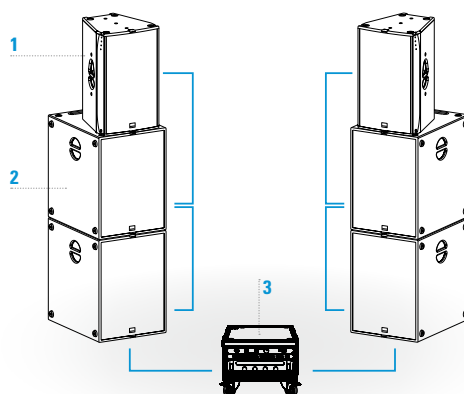
The K 24 not only performs well when used in the basic version, but can also be extended as desired to a larger system suitable for halls and open-air events.

Whether you opt for the G Sub 1801 (1 x 18") with its low tuning frequency, for the more punchy sounding K Sub 1502 (2 x 15") or for the direct radiating K Sub 1801 (1 x 18") is more or less a matter of taste. Depending on the configuration, all you have to do is load the preset in the HDLM 8 controller and the system will produce an excellent sound across a broad volume range.



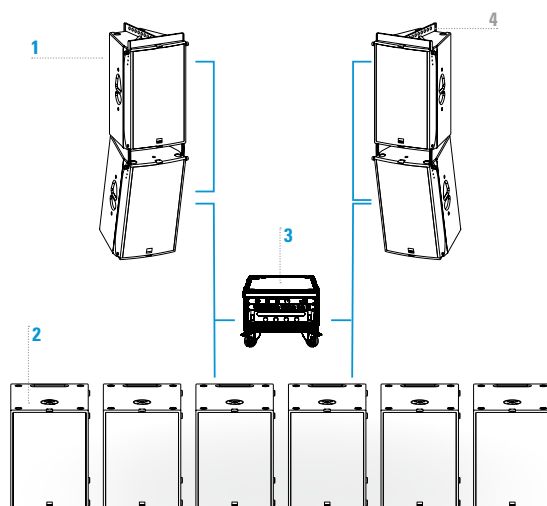
Basic System

Components	Order No.
1 2 x K 24 xov	01029/xov
2 2 x K Sub 1801, 18", 1500 W AES / 4500 W Peak, 8 Ω	01060
3 19" x 4 Rack HDLM 8	10003
Connection Panel CP 4.4	01402
4-Channel Amping (4 x in / 4 x out)	01409
Accessories	Order No.
4 Flying Bracket	01209/set
5 Pole Mount Adapter	08127/nut,
6 Speaker Pole	03022



Standard System

Components	Order No.
1 2 x K 24 xov	01029/xov
2 4 x K Sub 1801, 18", 1500 W AES / 4500 W Peak, 8 Ω	01060
3 19" x 4 Rack HDLM 8	10003
Connection Panel CP 4.4	01402
4-Channel Amping (4 x in / 4 x out)	01409



XL System

Components	Order No.
1 4 x K 24 xov	01029/xov
2 6 x K Sub 1801, 18", 1500 W AES / 4500 W Peak, 8 Ω	01060
3 19" x 4 Rack HDLM 8	10003
Connection Panel CP 4.4	01402
4-Channel Amping (4 x in / 4 x out)	01409
Accessories	Order No.
4 2 x Flying Cradle	01355

Flying Cradle



for K 24,
(incl. 1 x ball lock pin 6 x 25 mm,
1 x steel rope)
Order No. **01355**

Flying Bracket



for K 24,
(incl. 4 x ball lock pins 6 x 20 mm,
4 x steel ropes, 2 x handle screws
M8 x 20 mm)
Order No. **01209/set**

Handle Screw



M8 x 20 mm,
adjustable
Order No. **08376**

Ball Lock Pins



for K 24 (front)
Order No. **01380/6x17** (6 x 17 mm)
for K 24 (rear)
Order No. **01380/6x25** (6 x 25 mm)

MultiTilt™



Tilt adapter with adjustable tilt
from 0° to 37,5° (2,5° steps),
integr. pole mount adapter with clam-
ping device, (incl. 2 x knurled screws
M10 x 20 mm), max. load 50 kg
Order No. **01370**

MultiTilt™ Heavy Duty



for Galeo C / C-Series / K 24,
to be used with FD34 / FD33 truss,
minimum truss length: 0,21 m
consisting of base plate with M20
and tilt adjuster (incl. socket head
screw M20 x 30 mm),
weight: 13,5 kg, max. load 150 kg
Order No. **01359** (without traverse)

Pole Mount Adapter - M20



for flying bracket,
M20 x 35 mm with nut,
(incl. 1 x socket head screw
M20 x 30 mm, 1 x flat)
Order No. **08127/nut**

Speaker Pole



250 mm, ø 35 mm, M20
with ring lock
Order No. **03020**

Quick Trigger TV Clamp



for M20 TV adapter,
max. load 200 kg
Order No. **01223/TV**

Quick Trigger Clamp



max. load 100 kg
Order No. **01223/100 kg**

TV Adapter



M20 external thread,
28 mm Ø
Order No. **08128/M20**

Shackle



cambered, high-quality tempered,
with bolt (ø 12 mm), weight: 0,14 kg,
WLL 1000 kg
Order No. **01372/1000**



TV Adapter -> Flying Bracket

ACCESSORIES K 24



for K 24, 90° x 50°
Order No. **01598**

Wheel Board

for K 24, stackable
Order No. **01266**



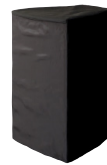
Flight Case

for 2 pcs. K 24 and accessories,
heavy duty, 9 mm birch multiplex,
PVC coated, 10 x recessed sprung
handles, 4 x butterfly catches,
4 x 100 mm blue wheels with brake,
2 x scanner windows, inserts for
accessories, interior lined with felt.
Order No. **16030/K24+**



Rain Cover

for K 24
Order No. **01255/outdoor**



Cover

for K 24 without wheel board
Order No. **01255**



Cover

for K 24 by using wheel board
Order No. **01255/WB**

