



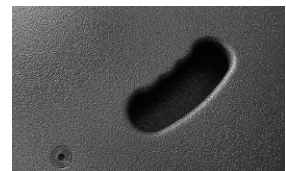
**Multifunctional 12"/ 1" cabinet with very linear sound reproduction. Equally suited to use as a high quality fullrange / high - mid unit or in monitor applications. The rotatable 1" DPC (= Dual Pattern Control) horn maintains a constant 90° x 60° dispersion over a wide frequency range. The A 6 is also available in the AF 6 version optimised for permanent installation.**

## PRODUCT SPECIFICATIONS

<b>Speaker Components</b>	12" Nd / 1" Nd
<b>Description</b>	Multi Purpose Sound System
<b>Power</b> AES / Peak	400 W / 1200 W
<b>Impedance</b> nominal	8 Ω
<b>SPL</b> 1 W / Peak @ 1 m	99 dB / 128 dB
<b>Usable Range</b> - 6 dB	50 Hz - 20 kHz
<b>Tuning Frequency</b> excursion minimum	60 Hz
<b>X - Overpoint</b> acoustical	1,3 kHz
<b>Coverage</b> horizontal / vertical	90° x 60°- rotatable
<b>Max. Splay Angle</b>	- - -
<b>Connectors</b>	2 x Neutrik Speakon NL4MP in/out Coding: 1 +/- HiMid, 2 +/- loop thru
<b>Handles</b>	1 x
<b>Rigging / Fittings</b>	2 x M10 / 7 x M8 35 mm pole mount
<b>Weight</b>	16,8 kg
<b>Size</b> height x width x depth	60,6 x 36,0 x 34,0 cm
<b>Order No.</b>	<b>00260</b> <b>00260/AF</b> (installation version)



The Cellulose membrane of the 1" driver provides warm high frequency reproduction.

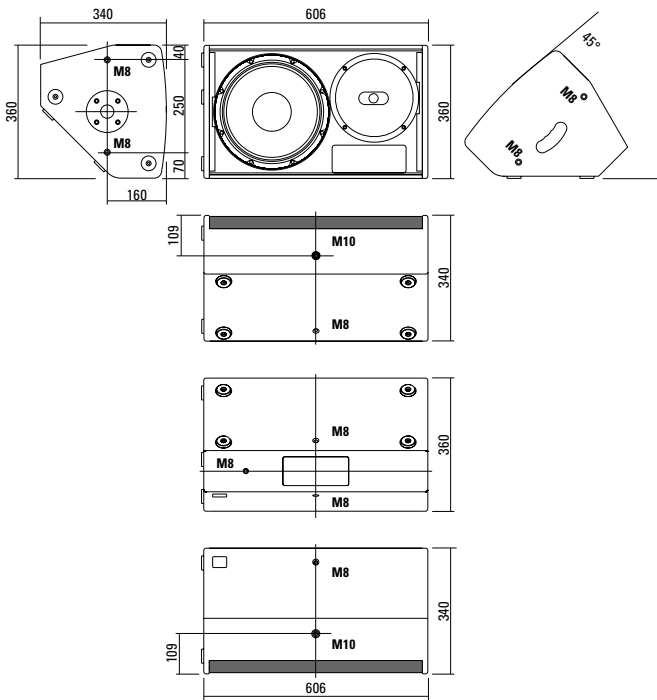


Ergonomic handle on top.

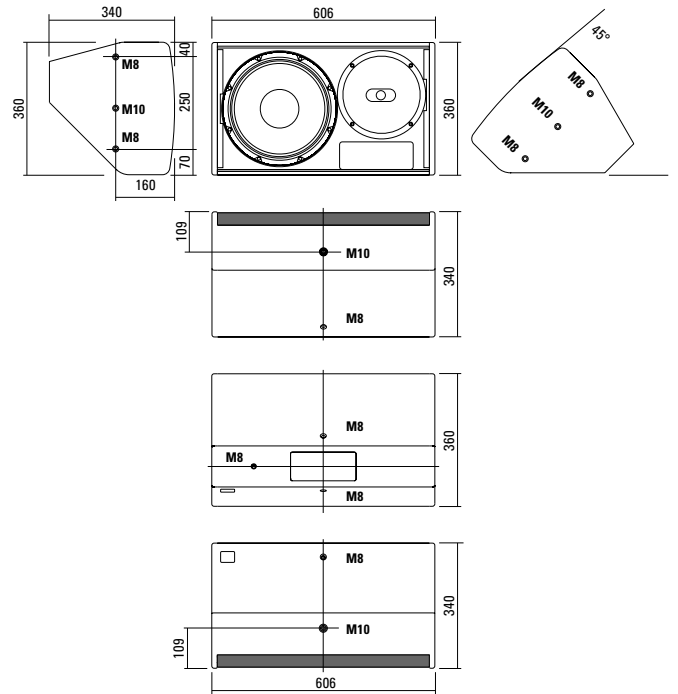


Neodym 12" loudspeaker with water resistant membrane coating.

## DIMENSIONS



## Installation Version AF 6

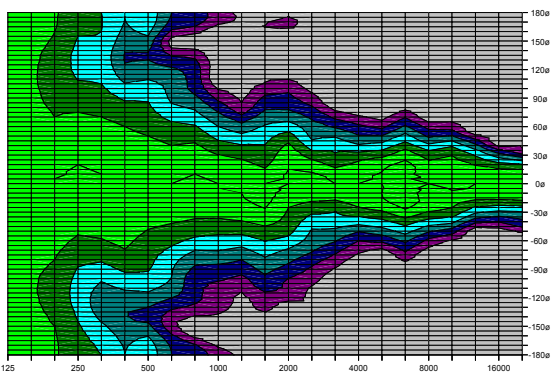


Controller Setups finden Sie unter:

<http://www.seeburg.net/downloads.php>

## COVERAGE PATTERNS

2D Directivity Plot - 90°x 60°horizontal



**Flying Bracket**



for A 6 / A 6 dp / TSM 12  
incl. screws  
(per unit: 2 pcs. M10 x 30 adjustable  
handle screws)  
Order No. **01216/set**

**Flying Bracket**



for A 6 / A 6 dp / TSM 12  
horizontal alignment, incl. screws  
(per unit: 2 pcs. adapters, M10 hex  
lock nuts, flat- and rubber washers)  
Order No. **01216/H/set**

**Flying Bracket**



for AF 6 horizontal alignment,  
incl. screws (per unit: 2 pcs. M10 x  
20 socket head screws, spring- and  
rubber washers)  
Order No. **01216/H/AF**

**Handle Screw**



for flying brackets, adjustable  
M10 x 30  
Order No. **08375/30**

**Ergostyle Lobe Knob**



for flying brackets, M10 x20,  
with grip, adjustable  
Order No. **08171**

**Flange**



for flying brackets,  
35 mm Ø -> M10,  
Order No. **08126**

**Rubber Washer**



for flying brackets,  
40 mm  
Order No. **01205**

**Doughty Trigger Clamp**



for flying brackets,  
SWL 200 kg  
Order No. **01222**

**Steel Safety Cable**



4 mm - 50 cm  
Order No. **01376**

**Chain Fastener**



VBS 7 mm  
Order No. **01378**

**Ring Screw**



M10- DIN 580,  
black zinced  
Order No. **73700**

**TV Spigot**



10 mm internal thread,  
28 mm Ø  
Order No. **08128**

## ACCESSORIES A 6

### Wall Mount



for U-brackets, 40 kg max., incl. screws (M10 x 70 mm socket head screw, M10 hex lock nut and flat washer)

for 8"-12" speakers

Order No. **08130/F/269**

### Wall Mount



with tilt unit, 40 kg max.

Order No. **08130**

### Speaker Stand



Incl. wind up, 50 kg max., height 129 to 204 cm, K&M

Order No. **03011**

50 kg max., K&M

Order No. **03010**

### Front Grille



for A 6, front grille version, foam behind

Order No. **97010/hex/compl.**

### Cover



for A 6 / A 6 dp / TSM 12, padded

Order No. **01244**

### Rain Cover



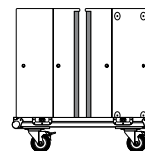
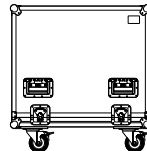
for A 6 / A 6 dp / TSM 12

Order No. **01244/outdoor**

### Flight Case

für 2 pcs. A 6 / TSM 12 / heavy duty, 6,5 mm birch multiplex, PVC coated, ball corners, 6 pcs recessed sprung handles, 4 pcs. butterfly catches, 100 mm blue wheels, 2 pcs. with brake, interior lined with felt.

Order No. **16010**



Front grille version.