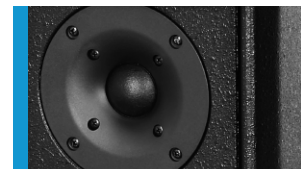




Universeller Kompaktlautsprecher für die hochwertige Musik- und Sprachübertragung auf kleineren Distanzen. Gute Eignung für den Einsatz in Pubs, Bistros und als universeller Nearfill. Drei M10 Aufnahmepunkte ermöglichen in Kombination mit dem Zubehör eine einfache Installation. Auch als TR-Version mit 100 V Übertrager lieferbar.

PRODUCT SPECIFICATIONS

Speaker Components	6,5" / 1,5" Tweeter
Description	HighMid Sound System
Power AES / Peak	100 W / 300 W
Impedance nominal	8 Ω (16 Ω optional)
SPL 1 W / Peak @ 1 m	93 dB / 115 dB
Usable Range - 6 dB	90 Hz - 17 kHz
Tuning Frequency excursion minimum	120 Hz
X - Overpoint acoustical	2,5 kHz
Coverage horizontal / vertical	100° - conical
Max. Splay Angle	---
Connectors	2 x Neutrik Speakon NL4MP in/out Coding: 1 +/- HiMid, 2 +/- loop thru
Handles	---
Rigging / Fittings	3 x M10
Weight	5,7 kg
Size height x width x depth	33,9 x 20,4 x 20,4 cm
Order No.	00210 00210/TR (with 100 V transformer)



Leistungsstarker Tweeter mit breit abstrahlendem Waveguide für präzise Hochtonwiedergabe.

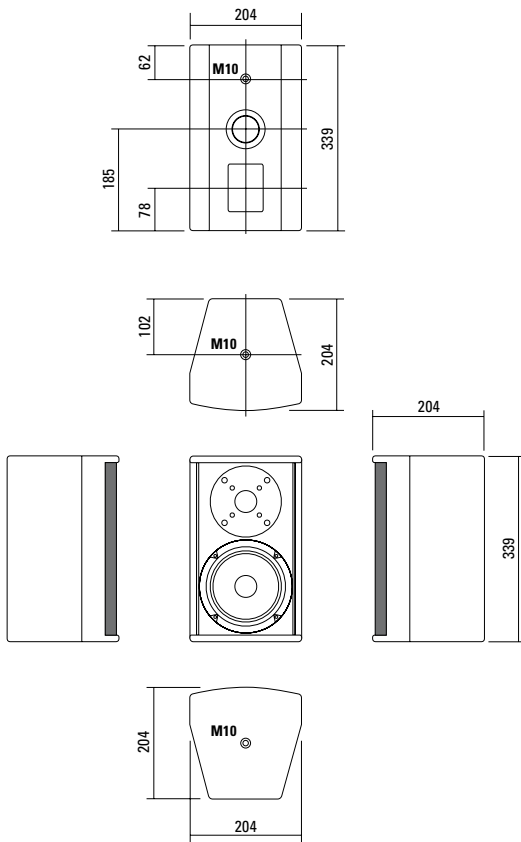


Eine tiefere Abstimmung erfolgt durch den Austausch des rückwärtigen Bass-reflexfunnels.



Insgesamt drei M10 Flugpunkte können zur Montage des umfangreichen Zubehörs genutzt werden.

DIMENSIONS

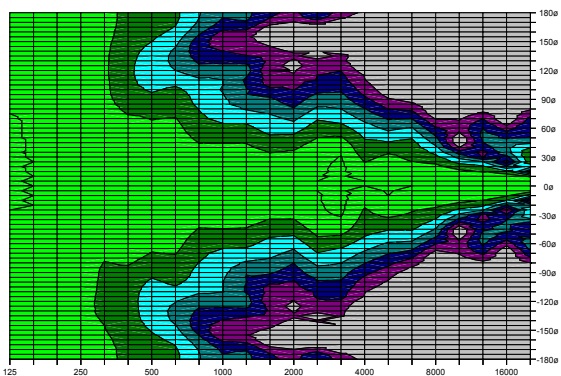


Controller Setups finden Sie unter:

<http://www.seeburg.net/Controller-Setups>

COVERAGE PATTERNS

2D Directivity Plot - 90° x 60° - horizontal





Flying Bracket

for A 1 / TS Nano,
horizontal alignment,
incl. screws (per unit: 2 pcs. M10 x 20
socket head screws, spring- and rubber
washers)

Order No. **01210/H/set**



Flying J-Bracket

for A 1 / TS Nano,
horizontal and vertical alignment,
incl. screws
(per unit: 1 pcs. M10 x 20 adjustable
handle screws and flat)

Order No. **01212/J/set**



Handle Screw

for flying brackets, adjustable
M10 x 20

Order No. **08375/20**



Ergostyle Lobe Knob

for flying brackets, M10 x20,
with grip, adjustable

Order No. **08171**



Flange

for flying brackets,
35 mm Ø → M10,

Order No. **08126**



Rubber Washer

for flying brackets,
40 mm

Order No. **01205**



Doughty Trigger Clamp

for flying brackets,
SWL 200 kg

Order No. **01222**



Steel Safety Cable

4 mm - 50 cm

Order No. **01376**



Chain Fastener

VBS 7 mm

Order No. **01378**



Ring Screw

M10- DIN 580,
black zinced

Order No. **73700**



TV Spigot

10 mm internal thread,
28 mm Ø

Order No. **08128**



Wall Mount

M10, 15 kg max.

Order No. **08131**

Order No. **08131/ws** (white)

ACCESSORIES A 1

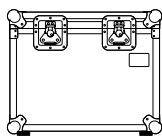
Bag



for 2 x A 1 / 2 x TS Nano, padded
with pocket for accessories

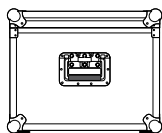
Order No. **01249**

Flight Case Trunk

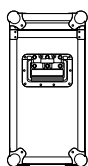


for 4 pcs. A 1 / TS Nano,
heavy duty, 6,5 mm birch multiplex,
PVC coated, ball corners, recessed
sprung handles, butterfly catches,
rubber bases, interior lined with felt.

Order No. **16005**



Flight Case Trunk



fits 2 pcs. A 1 / TS Nano,
with flange 08126, heavy duty,
6,5 mm birch multiplex, PVC coated,
ball corners, recessed sprung handles,
butterfly catches, rubber bases,
interior lined with felt.

Order No. **16006**

