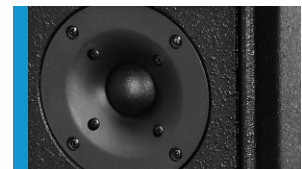




Universal small format loudspeaker for high quality music and speech reproduction. Well suited for applications in Pubs, Bistros and Cafes, and as a universal near field system. 3 x M10 mounting points provide for easy installation. The A 1 is also available in the TR-version with 100 V transformer.

PRODUCT SPECIFICATIONS

Speaker Components	6,5" / 1,5" Tweeter
Description	HighMid Sound System
Power AES / Peak	100 W / 300 W
Impedance nominal	8 Ω (16 Ω optional)
SPL 1 W / Peak @ 1 m	93 dB / 115 dB
Usable Range - 6 dB	90 Hz - 17 kHz
Tuning Frequency excursion minimum	120 Hz
X - Overpoint acoustical	2,5 kHz
Coverage horizontal / vertical	100° - conical
Max. Splay Angle	---
Connectors	2 x Neutrik Speakon NL4MP in/out Coding: 1 +/- HiMid, 2 +/- loop thru
Handles	---
Rigging / Fittings	3 x M10
Weight	5,7 kg
Size height x width x depth	33,9 x 20,4 x 20,4 cm
Order No.	00210 00210/TR (with 100 V transformer)



High power tweeter with a wide angle Waveguide for precise high frequency reproduction.

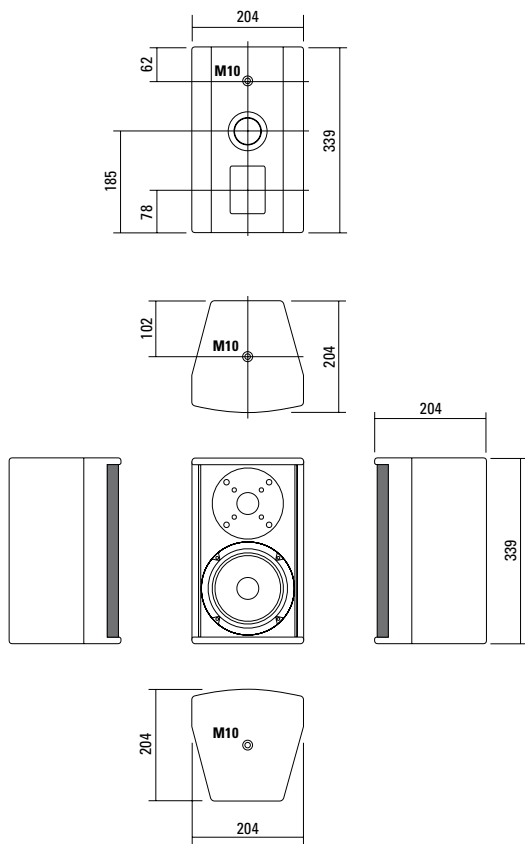


A deeper low end response can be achieved by changing the rear-mounted bass reflex tunnel.



A total of three M10 flying points can be utilised for mounting the extensive accessories.

DIMENSIONS

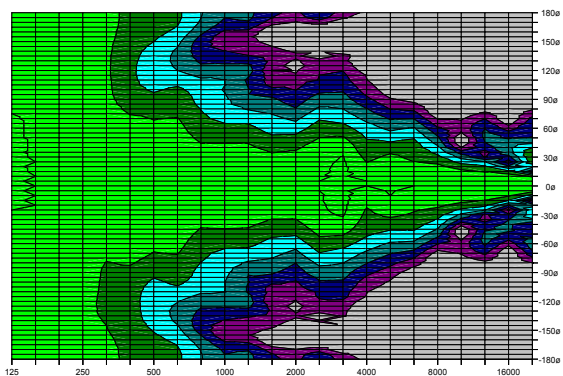


Controller Setups are available on our website:

<http://www.seeburg.net/Controller-Setups>

COVERAGE PATTERNS

2D Directivity Plot - 90° x 60° - horizontal





Flying Bracket

for A 1 / TS Nano,
horizontal alignment,
incl. screws (per unit: 2 pcs. M10 x 20
socket head screws, spring- and rubber
washers)

Order No. **01210/H/set**



Flying J-Bracket

for A 1 / TS Nano,
horizontal and vertical alignment,
incl. screws
(per unit: 1 pcs. M10 x 20 adjustable
handle screws and flat)

Order No. **01212/J/set**



Handle Screw

for flying brackets, adjustable
M10 x 20

Order No. **08375/20**



Ergostyle Lobe Knob

for flying brackets, M10 x20,
with grip, adjustable

Order No. **08171**



Flange

for flying brackets,
35 mm Ø → M10,

Order No. **08126**



Rubber Washer

for flying brackets,
40 mm

Order No. **01205**



Doughty Trigger Clamp

for flying brackets,
SWL 200 kg

Order No. **01222**



Steel Safety Cable

4 mm - 50 cm

Order No. **01376**



Chain Fastener

VBS 7 mm

Order No. **01378**



Ring Screw

M10– DIN 580,
black zinced

Order No. **73700**



TV Spigot

10 mm internal thread,
28 mm Ø

Order No. **08128**



Wall Mount

M10, 15 kg max.

Order No. **08131**

Order No. **08131/ws** (white)

ACCESSORIES A 1

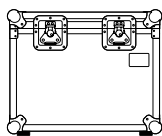
Bag



for 2 x A 1 / 2 x TS Nano, padded
with pocket for accessories

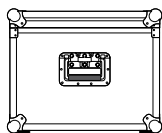
Order No. **01249**

Flight Case Trunk

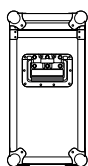


for 4 pcs. A 1 / TS Nano,
heavy duty, 6,5 mm birch multiplex,
PVC coated, ball corners, recessed
sprung handles, butterfly catches,
rubber bases, interior lined with felt.

Order No. **16005**



Flight Case Trunk



fits 2 pcs. A 1 / TS Nano,
with flange 08126, heavy duty,
6,5 mm birch multiplex, PVC coated,
ball corners, recessed sprung handles,
butterfly catches, rubber bases,
interior lined with felt.

Order No. **16006**

