



**Subwoofer extension for the A 1 for satellite system applications. The 12" long-excursion chassis utilises a double-bandpass cabinet, ensuring very deep and punchy bass response. The cabinet features 8 x M8 mounting points for installation.**

## PRODUCT SPECIFICATIONS

<b>Speaker Components</b>	12"
<b>Description</b>	Passive Bass Extension
<b>Power</b> AES / Peak	2 x 150 W / 2 x 450 W
<b>Impedance</b> nominal	2 x 4 Ω
<b>SPL</b> 1 W / Peak @ 1 m	94 dB / 121 dB
<b>Usable Range</b> -6 dB	35 Hz - 150 Hz
<b>Tuning Frequency</b> excursion minimum	38 Hz / 110 Hz
<b>Connectors</b>	2 x Neutrik Speakon NL4MP in 2 x Neutrik Speakon NL4MP out Coding: 1 +/- Sub, 2 +/- n.c.
<b>Handles</b>	---
<b>Rigging / Fittings</b>	8 x M8
<b>Weight</b>	19,5 kg
<b>Size</b> height x width x depth	35,0 x 80,0 x 30,0 cm
<b>Order No.</b>	<b>00220/dc</b>

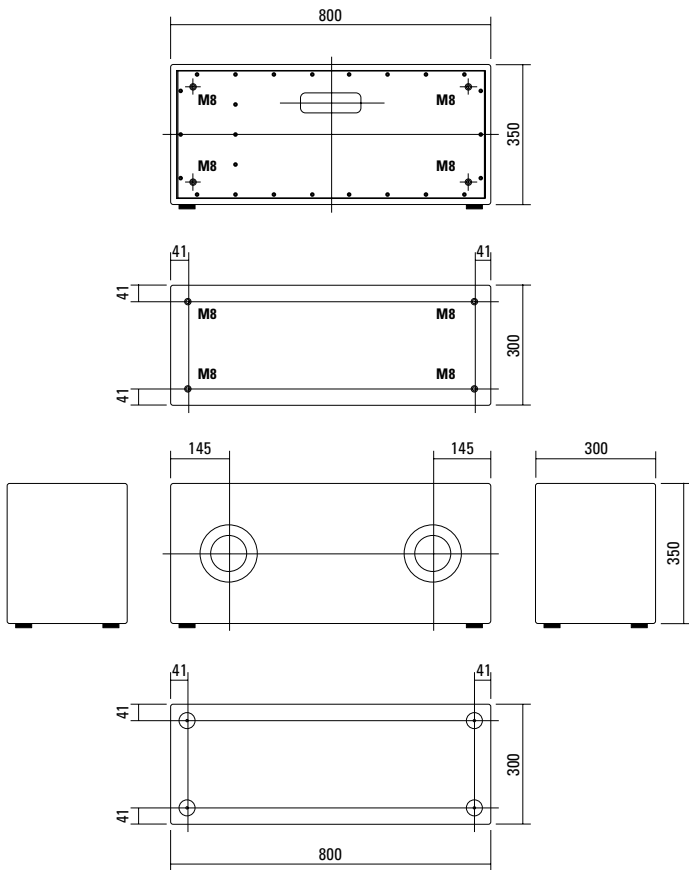


Generously proportioned bass reflex ports provide deep and crisp bass reproduction.



Connection panel of the dc-version. For use as the basis of a satellite system.

## DIMENSIONS



Controller Setups are available on our website:

<http://www.seeburg.net/Controller-Setups>

## ACCESSORIES A 1 Sub

### Cover



for A 1 Sub / A 1 Sub dc  
Order No. **01259**

## MEASUREMENT

### Impedance

