



Multifunctional premium-class compact 2-way-system. The coaxial configuration in combination with a carefully designed large-area horn ensures absolutely constant response even off the main axis. High-power Neodym drivers and long-excursion coils provide high efficiency and reduced distortion. Nine M10 threaded mounting points are available to mount MultiRigg hardware and other accessories for installation or mobile applications. The integrated amplifier electronics are based on Class D power amplifiers, which are controlled via particularly low-noise FPGA DSP processing. Various factory-configured presets and volume settings can be called up. Remote monitoring and control is carried out via the Ethernet interface using SEEBURG Network Manager. Signal transmission (AoE) in accordance with the AES 67 standard is also possible.

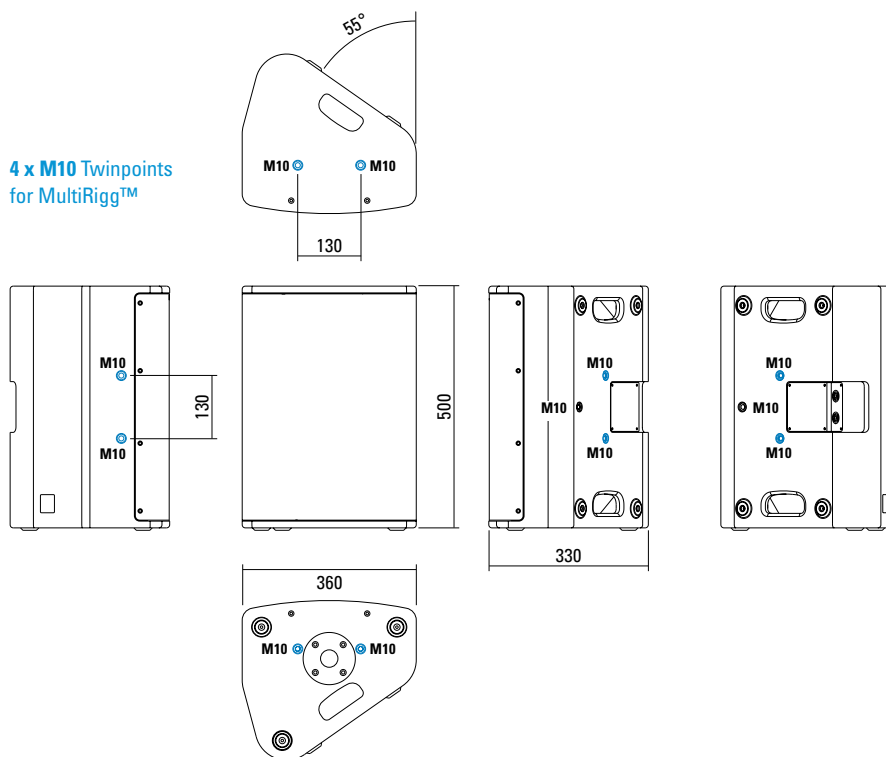
PRODUCT SPECIFICATIONS

Speaker Components	12" Nd (3,5" VC) / 1,4" Nd (3" VC)
Description	Multifunctional Coaxial Sound System
Amp Power AES	LF: 1500 W / HF: 400 W / 110-230 V
Rated Current	0,7 A
SPL Peak @ 1 m	131 dB
Max. Input Signal	25 dBu
DSP	DPLMx FPGA Processing 32 bit floating point
AD / DA	24 bit / 96 kHz
Latency	0,8 ms (analog in to analog out)
Usable Range	55 Hz - 18 kHz (-6 dB)
Tuning Frequency excursion minimum	65 Hz
X - Overpoint acoustical	Depends on preset
Coverage horizontal / vertical	80° x 60° - rotatable
Connectors	XLR in, Ethercon, Powercon in
Handles	2 x
Rigging / Fittings	9 x M10 to be used with MultiRigg™ 35 mm pole mount
Weight	18,5 kg
Size height x width x depth	50,0 x 36,0 x 33,0 cm
Order No.	01095/dp



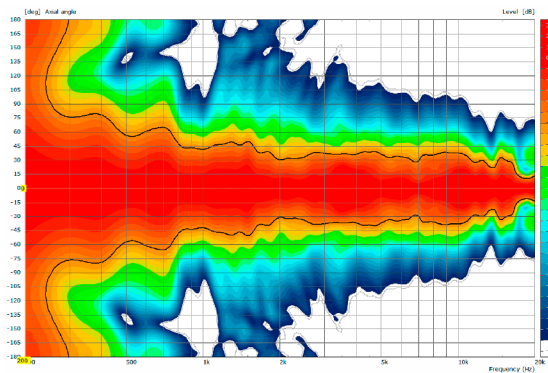
DIMENSIONS

4 x M10 Twinpoints
for MultiRigg™

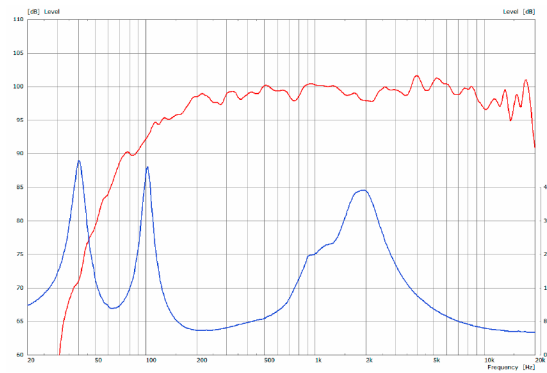


MEASUREMENTS

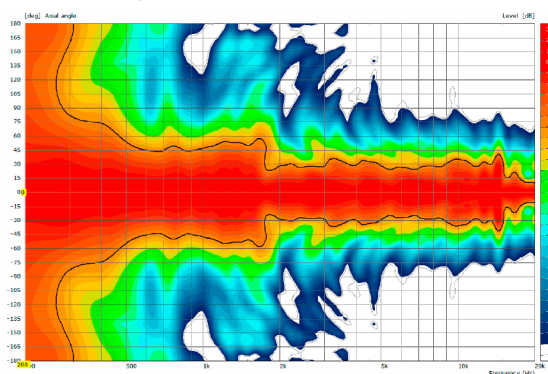
2D Directivity Plot - horizontal



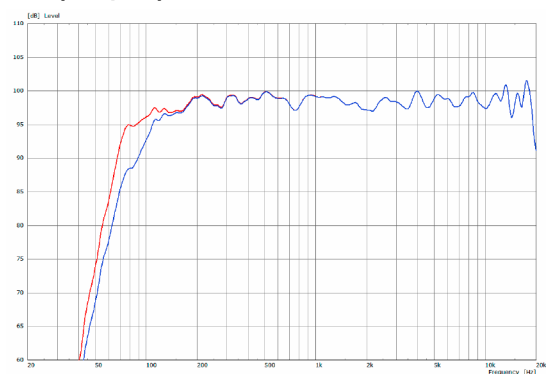
Sensitivity 1 W @ 1 m + Impedance



2D Directivity Plot - vertical



Frequency Response with Presets



The X 6 dp features integrated digital amplifier electronics with a DSP controller (dp = digitally powered). Various factory-configured presets and volume settings can be called up directly on the box or via a network connection.

High-grade electronic components from the industrial sector and a first-class circuit design ensure excellent audio quality with low distortion and a minimal noise floor. Highly efficient and "intelligent" limiter systems ensure optimum protection against overload, without restricting the possibilities offered by this high-performance sound system.

 [Presets > Quick Start Manual](#)

Level

Adjustment in 3 dB steps (-12 dB to +6 dB).

Status

Mute LED

Red light when the system is muted or under technically critical conditions.

Limit LED

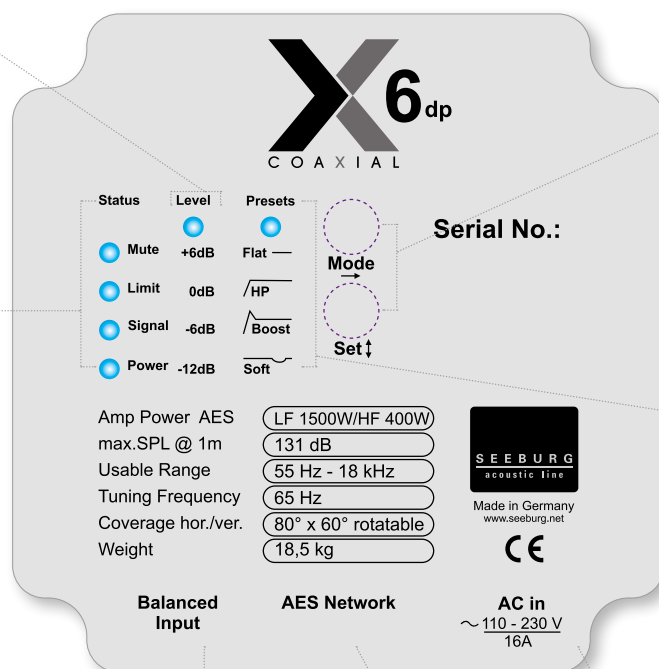
Yellow light when the limiter is restricting the level.

Signal LED

Green light when the input signal exceeds -20 dBu

Power LED

Green light when the system is switched on.



Mode - key

Switches between control modes: Status, Level and Presets.

Set - key

Setting of various values and Mute on / off.

Presets

Flat

This setting provides a linear frequency response with a neutral sound characteristics. Standard setting for many applications.

HP

Switches in a high pass filter for use in combination with a subwoofer.

Boost

The same neutral response as the „Flat“ setting, but with the addition of a bass boost.

Soft

Reduces the level in the frequency range from 2.5 - 5 kHz, to which the ear is particularly sensitive. This setting is recommended for high level reproduction of highly compressed music tracks.

XLR

- Symmetrical analog input.
- Effective filter protection against HF interference and DC Voltages.
- Electronically balanced to prevent noise.

Ethercon

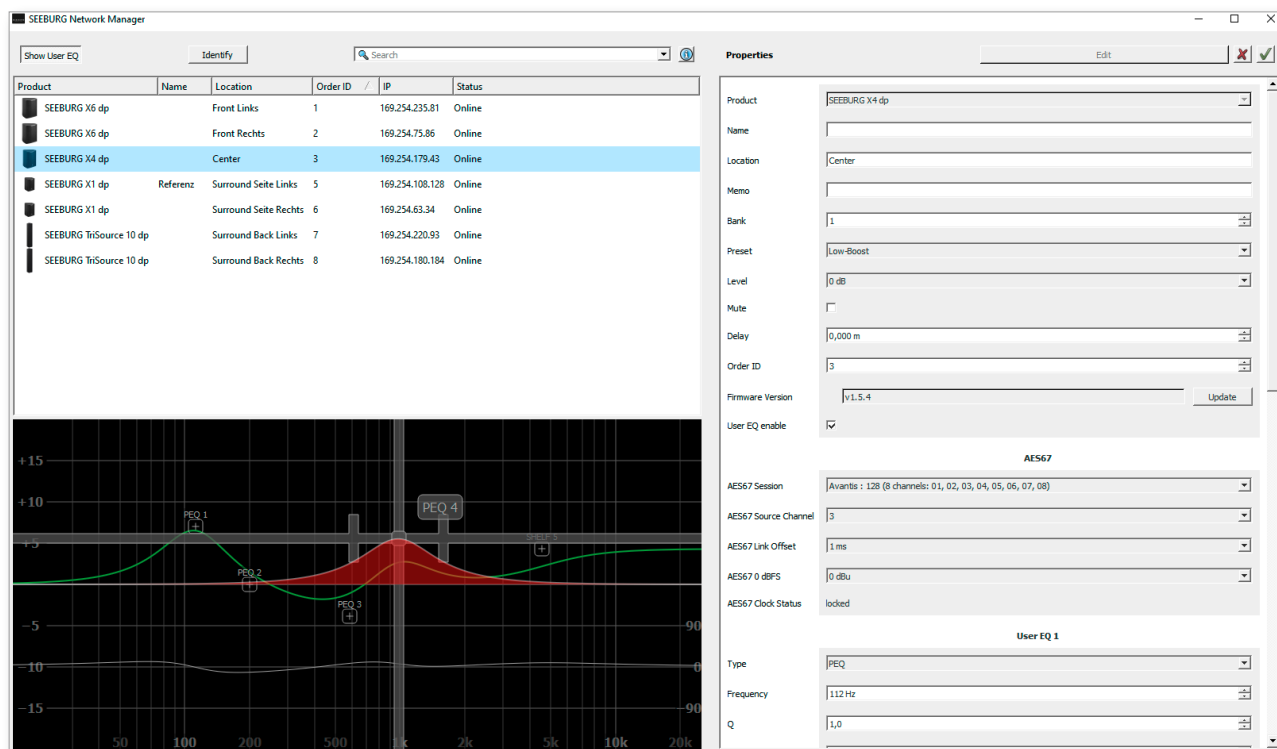
Interface for remote control and audio transfer via ethernet (AES 67).

Powercon (blue)

Power supply
~ 110-230 V / 16 A max.

SEEBURG NETWORK Manager

With the Software SEEBURG Network Manager all selfpowered systems can be controlled via network.



Features:

- > **Remote control** of functions such as recalling presets and banks, level control and mute, and locking the controls on the loudspeakers.
- > **Visual display** of all systems connected to the control network.
- > Storable names and location labels with a **global search function**.
- > **Selection of loudspeakers** in the list for simultaneous set-up and control changes.
- > **Fully parametric user EQs and delay settings** for time alignment, with a graphical user interface
- > **Time Delay** with up to **2.8 seconds runtime**.
- > **Audio-over-Ethernet (AoE) via AES 67.**
- > Connection with **media control systems** via **API**.
- > Basic **network settings**.
- > **Documentation** is available **online**.
- > **Identification function** by way of flashing LEDs on the dp loudspeaker systems.
- > **Firmware updates** can be applied.



Quick Start Guide:

www.seeburg.com > DOWNLOADS > User Manuals

AES NETWORK interface

All selfpowered systems are equipped as standard with an **AES Network interface**.

This is used for **remote control** via the **SEEBURG Network Manager** and for **Audio-over-Ethernet (AoE) audio transmission** via **AES 67**.



AES Network

MultiRigg™



swiveling fastening solution for horizontal and vertical alignment, for flown / ground stacked / mounted applications, incl. accessories (2 x knurled screws M10 x 20 mm, 1 x handle screw M8 x 55 mm), max. load 50 kg

Order No. **01360**

MultiRigg™ light



version for fixed installations, for horizontal and vertical alignment, tiltable vertical angle, incl. accessories (2 x M10 x 20 socket head screws), max. load 50 kg

Order No. **01362**

MultiTilt™



Tilt adapter with adjustable tilt from 0° to 37,5° (2,5° steps), integr. pole mount adapter with clamping device, 2 x knurled screws (M10 x 20 mm), max. load 50 kg

Order No. **01370**

Knurled Screw



M10 x 20 mm

Order No. **73750/w** (RAL 9010)

Order No. **73750**

Knurled Head Nut



reduction screw for fastening M10 Pole Mount Adapter (08126)

Order No. **73755**

Pole Mount Adapter



35 mm Ø → M10 x 16 mm, M8 x 20 star knob screw

Order No. **08126**

35 mm Ø → M10 x 16 mm

Order No. **08126/II**

Steel Safety



6 mm x 600 mm, black, max. load 22 kg (BGI 810-3), quick connector undetachably

Order No. **01376/6**

TV Spigot



10 mm internal thread, 28 mm Ø

Order No. **08128**

Ring Screw



M10– DIN 580

Order No. **73700** (zincd)

Order No. **73700/sw** (black zincd)

Quick Trigger Clamp



max. load 100 kg

Order No. **01223/100 kg**

Quick Trigger Clamp - small

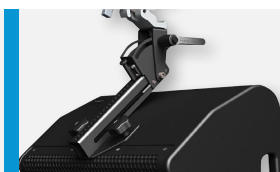


M10, max. load 20 kg

Order No. **01223/20 kg**



MultiRigg™ Light



MultiRigg™

ACCESSORIES X 6 dp

Adapter



for X 4, X 6, X 8
for mounting with Wall Mount (03034),
incl. 2 x M10 x 20 socket head screws
Order No. **01198/w** (RAL 9010)
Order No. **01198**

Wall Mount



2 x M6 fixing holes (d=73 mm),
1 x M10 fixing hole (center),
max. load 25 kg
Order No. **03034/w** (RAL 9010)
Order No. **03034**

Wall Mount



bar: 269 mm, max. load 40 kg,
incl. (M10 x 70 mm socket head screw,
M10 hex lock nut and flat washer)
Order No. **08130/F/269/w** (RAL 9010)
Order No. **08130/F/269**

Wall Mount



with tilt unit, max. load 40 kg
Order No. **08130**

Hybrid Cable System



PowerCon-PowerCon / XLR-XLR
2,5 m Order No. **08462**
5 m Order No. **08464**
10 m Order No. **08466**
15 m Order No. **08468**

Cover



for X 6,
padded
Order No. **01225/X6**

Rain Cover

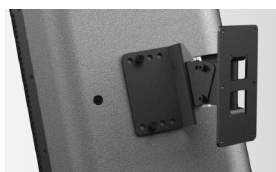


for X 6,
with zipper
Order No. **01225/X6/outdoor**

Flight Case



for 2 pcs. X 6 and 2 pcs. MultiRigg,
partition walls, heavy duty, 9 mm
birch multiplex, PVC coated black,
6 x recessed sprung handles,
2 x butterfly catches, 4 x 100 mm blue
wheels (2 pcs. with brake), interior
lined with felt
Size (H x W x D): 68,6 x 61,5 x 65,5 cm
Order No. **16565**



Rain Cover