



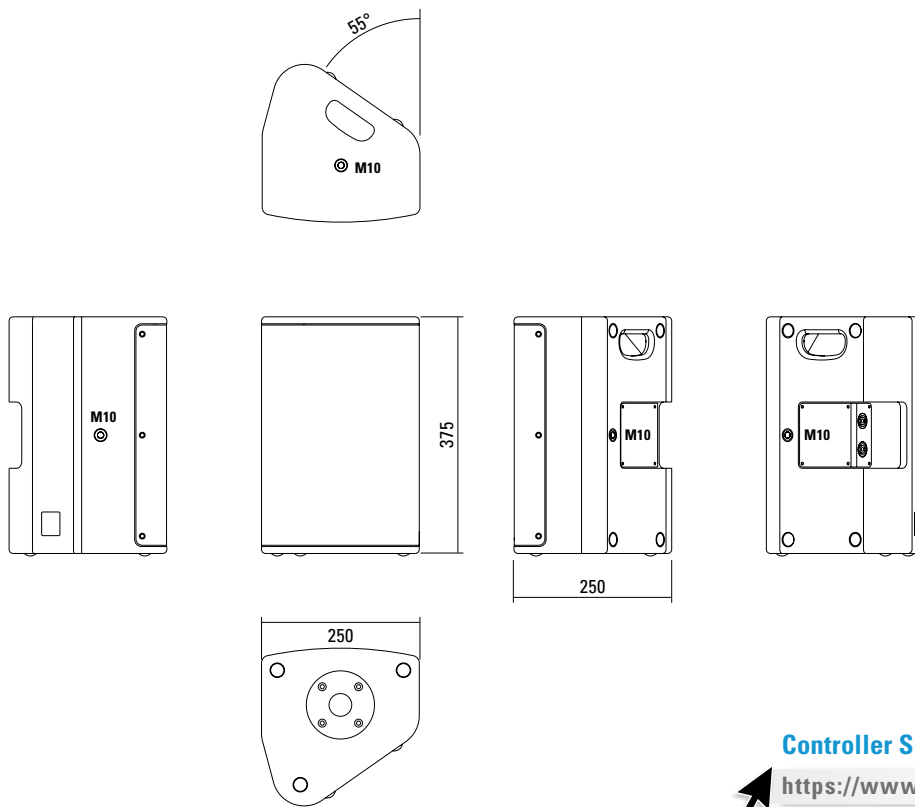
Multifunctional premium-class compact 2-way system. The coaxial configuration in combination with a carefully designed large-area horn ensures absolutely constant response even off the main axis. High-power Neodym drivers and long-excursion coils provide high efficiency and reduced distortion. Three M10 threaded mounting points are available to mount accessories for installation or mobile applications.

## PRODUCT SPECIFICATIONS

<b>Speaker Components</b>	8" Nd (2,5" VC) / 1" Nd (1,7" VC)
<b>Description</b>	Multifunctional Coaxial Sound System
<b>Power</b> AES / Peak	250 W / 750 W
<b>Impedance</b> nominal	8 $\Omega$
<b>SPL</b> 1 W / Peak @ 1 m	95 dB / 124 dB
<b>Usable Range</b>	70 Hz - 19 kHz (-6 dB)
<b>Tuning Frequency</b> Excursion minimum	80 Hz
<b>X - Overpoint</b> acoustical	1,6 kHz
<b>Coverage</b> horizontal / vertical	90° x 60° - rotatable
<b>Connectors</b>	2 x Speakon NL4MP in/out Coding: 1 +/- HiMid, 2 +/- loop thru
<b>Handles</b>	1 x
<b>Rigging / Fittings</b>	3 x M10 35 mm pole mount
<b>Weight</b>	8 kg
<b>Size</b> height x width x depth	37,5 x 25,0 x 25,0 cm
<b>Order No.</b>	<b>01091</b>



## DIMENSIONS

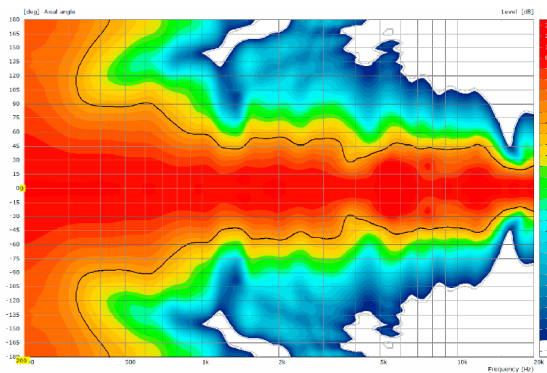


### Controller Setups:

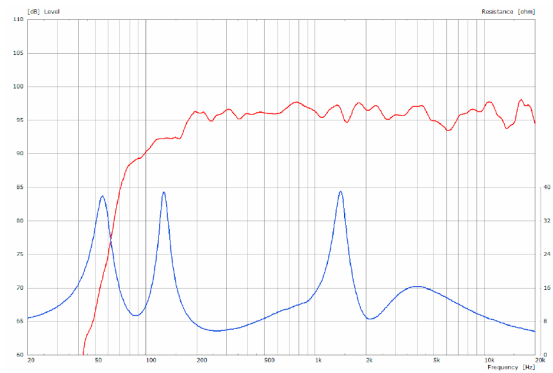
<https://www.seeburg.net/en/downloads>

## MEASUREMENTS

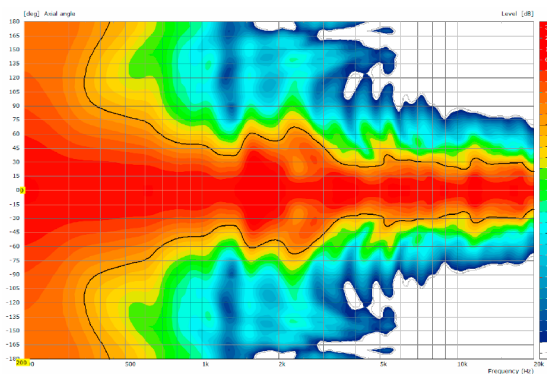
### 2D Directivity Plot - horizontal



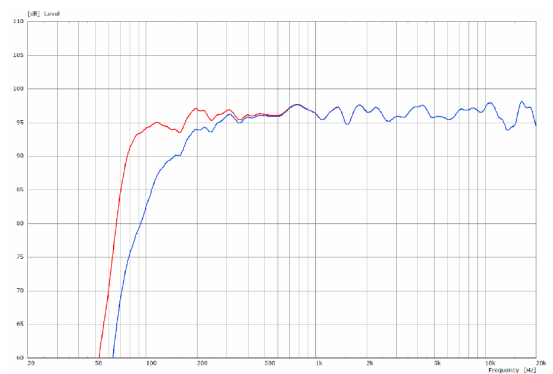
### Sensitivity 1 W @ 1 m + Impedance



### 2D Directivity Plot - vertical



### Frequency Response with Presets





### Flying J-Bracket

for A 1 / GL 8 / X 1 / X 2 / TS Nano,  
horizontal and vertical alignment,  
incl. (white version: 1 x M10 x 20  
socket head screws, black version:  
1 x M10 x 20 adjustable handle screw)  
Order No. **01200/set/w** (RAL 9010)  
Order No. **01200/set**



### Handle Screw

for flying brackets,  
adjustable  
M10 x 20  
Order No. **08375/20**



### Flange

with ball and socket joint,  
with additional locking screw,  
M10 x 15, max. load 15 kg  
Order No. **08125**



### Knurled Head Nut

reduction screw for fastening  
M10 Pole Mount Adapter (08126)  
Order No. **73755**



### Pole Mount Adapter

35 mm  $\varnothing$   $\rightarrow$  M10 x 16 mm,  
M8 x 20 star knob screw  
Order No. **08126**  
  
35 mm  $\varnothing$   $\rightarrow$  M10 x 16 mm  
Order No. **08126/II**



### Steel Safety

4 mm x 600 mm, black,  
max. load 10 kg (BGI 810-3),  
quick connector undetachably  
Order No. **01376/4**



### Quick Trigger Clamp

max. load 100 kg  
Order No. **01223/100 kg**



### Quick Trigger Clamp - small

M10, max. load 20 kg  
Order No. **01223/20 kg**



### Truss Clamp

incl. M10 Adapter,  
max. load 15 kg  
Order No. **01221**



### Ring Screw

M10– DIN 580  
Order No. **73700** (zincd)  
Order No. **73700/sw** (black zincd)



## ACCESSORIES X 2

### Wall Mount



ball and socket joint flange (08125)  
+ 08125/plate  
Order No. **08125/set**

### Wall Mount



for permanent installation,  
incl. tilt angle stop,  
M10, max. load 15 kg  
Order No. **08131/F/w** (RAL 9010)  
Order No. **08131/F**

### Wall Mount



bar: 269 mm, max. load 40 kg,  
incl. (M10 x 70 mm socket head screw,  
M10 hex lock nut and flat washer)  
Order No. **08130/F/269/w** (RAL 9010)  
Order No. **08130/F/269**

### Wall Mount



with tilt unit, max. load 40 kg  
Order No. **08130**

### Bag



for 2 x X 2 / 2 x TSM 8, padded  
with pocket for accessories  
Order No. **01245**

### Rain Cover



for X 2,  
with zipper  
Order No. **01225/X2/outdoor**

### Flight Case Trunk



for 4 pcs. X 2, 4 x partition walls for  
X 2 + accessories, heavy duty, 9 mm  
birch multiplex, PVC coated black,  
6 x recessed sprung handles, 2 x large  
butterfly catches, 4 x 100 mm blue  
wheels (2 pcs. with brake), interior  
lined with felt, 29 kg  
Size (H x W x D): 58 x 74 x 60 cm  
Order No. **16555/4**



Flight Case

