



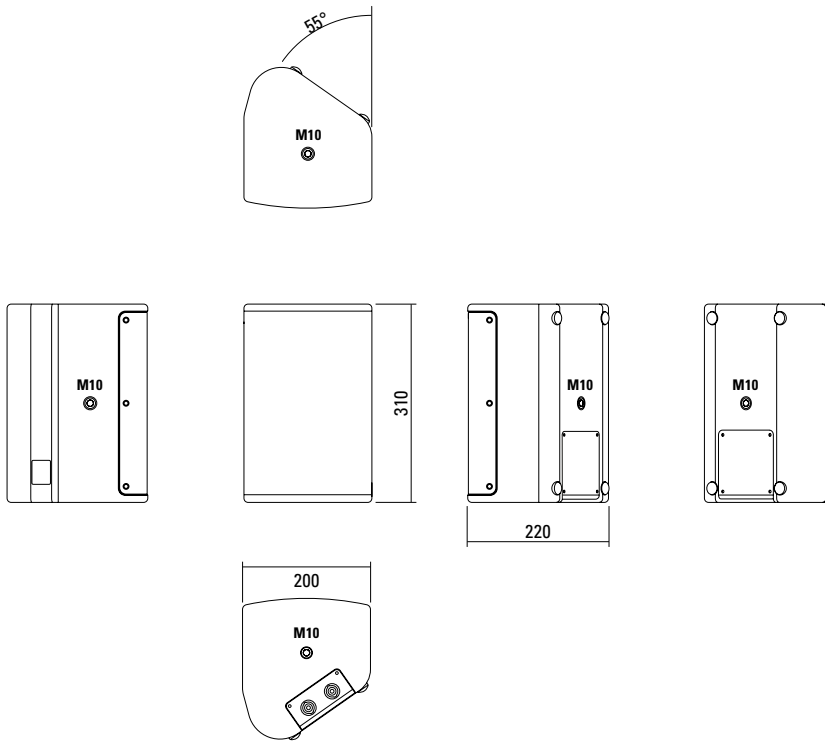
Multifunctional premium-class compact Two-way system. The coaxial configuration in combination with a carefully designed large-area horn ensures absolutely constant response even off the main axis. High-power Neodymium drivers and long-excursion coils provide high efficiency and reduced distortion. Four M10 threaded mounting points are available to mount accessories for installation or mobile applications. The integrated amplifier electronics deliver 280 / 175 watts (AES) and are based on Class D power amplifiers, which are controlled via particularly low-noise FPGA DSP processing. Various factory-configured presets and volume settings can be called up. Remote monitoring and control is carried out via the Ethernet interface using SEEBURG Network Manager. Signal transmission (AoE) in accordance with the AES 67 standard is also possible.

## PRODUCT SPECIFICATIONS

<b>Speaker Components</b>	6,5" Nd (2" VC) / 1" Nd (1,7" VC)
<b>Description</b>	Multifunctional Coaxial Sound System
<b>Amp Power</b> AES	LF: 280 W / HF: 175 W / 110-230 V
<b>Rated Current</b>	0,2 A
<b>SPL</b> Peak @ 1 m	120 dB
<b>Max. Input Signal</b>	25 dBu
<b>DSP</b>	DPLMx FPGA Processing 32 bit floating point
<b>AD / DA</b>	24 bit / 96 kHz
<b>Latency</b>	0,8 ms (analog in to analog out)
<b>Usable Range</b>	80 Hz - 19 kHz (-6 dB)
<b>Tuning Frequency</b> excursion minimum	90 Hz
<b>X - Overpoint</b> acoustical	Depends on preset
<b>Coverage</b> horizontal / vertical	90° x 60° - rotatable
<b>Connectors</b>	XLR in, Ethercon Powercon in
<b>Rigging / Fittings</b>	4 x M10
<b>Weight</b>	5,5 kg
<b>Size</b> height x width x depth	31,0 x 20,0 x 22,0 cm
<b>Order No.</b>	<b>01090/dp</b>

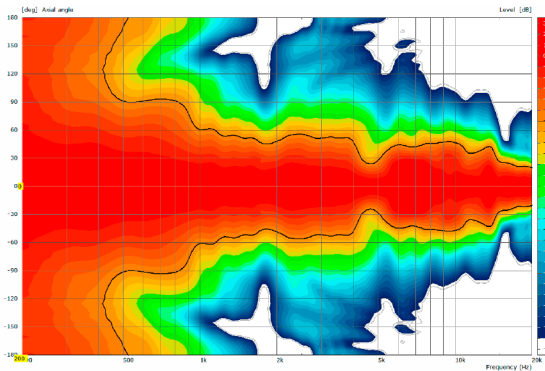


## DIMENSIONS

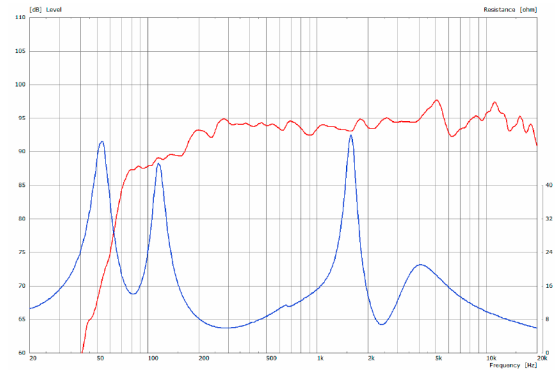


## MEASUREMENTS

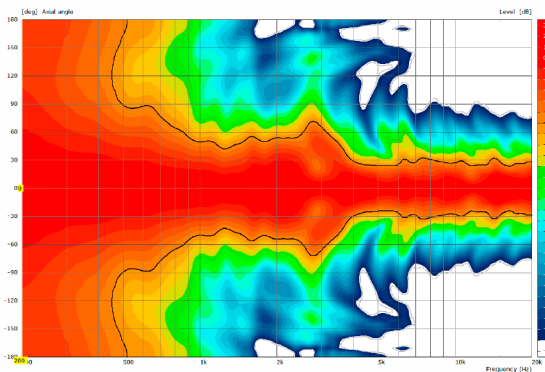
2D Directivity Plot - horizontal



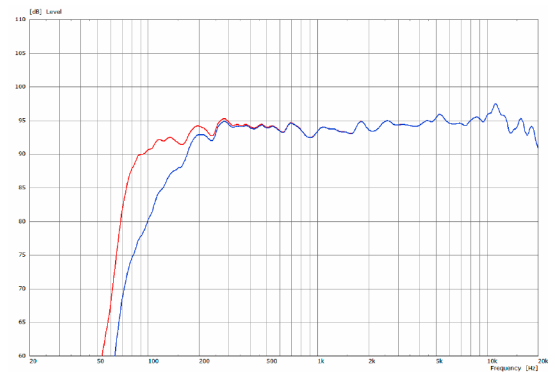
Sensitivity 1 W @ 1 m + Impedance



2D Directivity Plot - vertical



Frequency Response with Presets



The X 1 dp features integrated digital amplifier electronics with a DSP controller (dp = digitally powered). Various factory-configured presets and volume settings can be called up directly on the box or via a network connection.

High-grade electronic components from the industrial sector and a first-class circuit design ensure excellent audio quality with low distortion and a minimal noise floor. Highly efficient and “intelligent” limiter systems ensure optimum protection against overload, without restricting the possibilities offered by this high-performance sound system.

 [Presets > Quick Start Manual](#)

**Level**

Adjustment in 3 dB steps (-12 dB to +6 dB).

**Status**

**Mute LED**

Red light when the system is muted or under technically critical conditions.

**Limit LED**

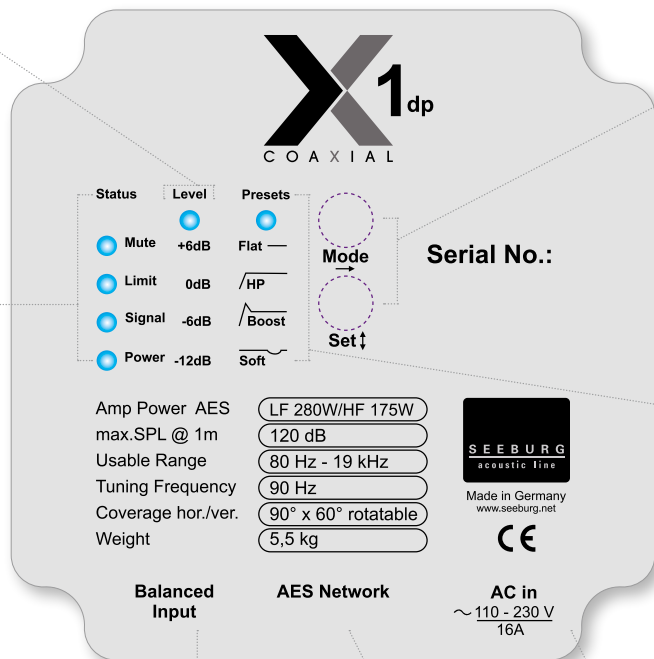
Yellow light when the limiter is restricting the level.

**Signal LED**

Green light when the input signal exceeds -20 dBu

**Power LED**

Green light when the system is switched on.



**Mode - key**

Switches between control modes: Status, Level and Presets.

**Set - key**

Setting of various values and Mute on / off.

**Presets**

**Flat**

This setting provides a linear frequency response with a neutral sound characteristics. Standard setting for many applications.

**HP**

Switches in a high pass filter for use in combination with a subwoofer.

**Boost**

The same neutral response as the „Flat“ setting, but with the addition of a bass boost.

**Soft**

Reduces the level in the frequency range from 2.5 - 5 kHz, to which the ear is particularly sensitive. This setting is recommended for high level reproduction of highly compressed music tracks.

**XLR**

- Symmetrical analog input.
- Effective filter protection against HF interference and DC Voltages.
- Electronically balanced to prevent noise.

**Ethercon**

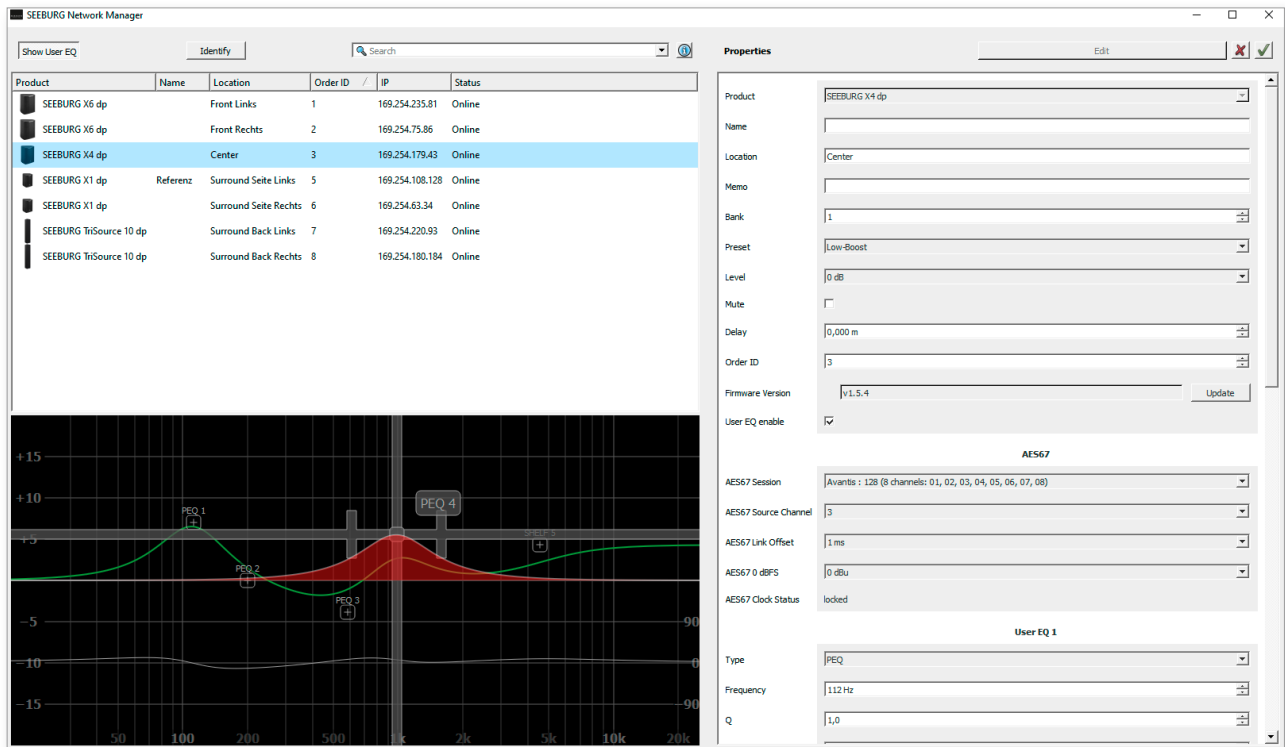
Interface for remote control and audio transfer via ethernet (AES 67).

**Powercon (blue)**

Power supply ~ 110-230 V / 16 A max.

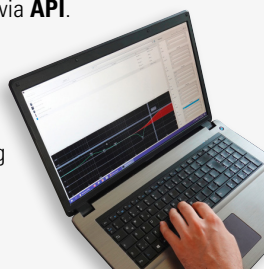
# SEEBURG NETWORK Manager

With the Software SEEBURG Network Manager all selfpowered systems can be controlled via network.



## Features:

- > **Remote control** of functions such as recalling presets and banks, level control and mute, and locking the controls on the loudspeakers.
- > **Visual display** of all systems connected to the control network.
- > Storable names and location labels with a **global search function**.
- > **Selection of loudspeakers** in the list for simultaneous set-up and control changes.
- > **Fully parametric user EQs and delay settings** for time alignment, with a graphical user interface
- > **Time Delay** with up to **2.8 seconds runtime**.
- > **Audio-over-Ethernet (AoE) via AES 67.**
- > Connection with **media control systems via API**.
- > Basic **network settings**.
- > **Documentation** is available **online**.
- > **Identification function** by way of flashing LEDs on the dp loudspeaker systems.
- > **Firmware updates** can be applied.



 [SEEBURG Network Manager > Quick Start Manual \(pdf\)](#)

## AES NETWORK interface

All selfpowered systems are equipped as standard with an **AES Network interface**.

This is used for **remote control** via the **SEEBURG Network Manager** and for **Audio-over-Ethernet (AoE) audio transmission via AES 67.**



AES Network

## ACCESSORIES X 1 dp

### Flying J-Bracket



for A 1 / GL 8 / X 1 / X 2 / TS Nano, horizontal and vertical alignment, incl. (white version: 1 x M10 x 20 socket head screws, black version: 1 x M10 x 20 adjustable handle screw)  
Order No. **01200/set/w** (RAL 9010)  
Order No. **01200/set**

### Handle Screw



for flying brackets, adjustable  
M10 x 20  
Order No. **08375/20**

### Flange



with ball and socket joint, with additional locking screw, M10 x 15, max. load 15 kg  
Order No. **08125**

### Knurled Head Nut



reduction screw for fastening M10 Pole Mount Adapter (08126)  
Order No. **73755**

### Pole Mount Adapter



35 mm  $\varnothing$   $\rightarrow$  M10 x 16 mm, M8 x 20 star knob screw  
Order No. **08126**

35 mm  $\varnothing$   $\rightarrow$  M10 x 16 mm  
Order No. **08126/II**

### Wall Mount



for permanent installation, incl. tilt angle stop, M10, max. load 15 kg  
Order No. **08131/F/w** (RAL 9010)  
Order No. **08131/F**

### Wall Mount



ball and socket joint flange (08125) + 08125/plate  
Order No. **08125/set**

### Quick Trigger Clamp - small



M10, max. load 20 kg  
Order No. **01223/20 kg**

### Truss Clamp



incl. M10 Adapter, max. load 15 kg  
Order No. **01221**

### Ring Screw



M10– DIN 580  
Order No. **73700** (zincd)  
Order No. **73700/sw** (black zincd)

### Steel Safety



4 mm x 600 mm, black, max. load 10 kg (BGI 810-3), quick connector undetachably  
Order No. **01376/4**

### Bag



for 2 x A 1 / 2 x TS Nano / 2 x X 1, padded with pocket for accessories  
Order No. **01249**

### Hybrid Cable System



PowerCon-PowerCon / XLR-XLR  
2,5 m Order No. **08462**  
5 m Order No. **08464**  
10 m Order No. **08466**  
15 m Order No. **08468**

