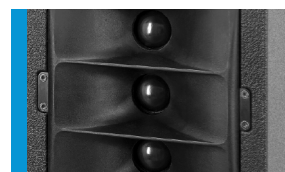




The TriSource 10 loudspeaker system is specifically designed for use in combination with large-format video displays in applications where very high sound quality in combination with a long throw is required. The shallow depth and neutral appearance of the enclosure make the system easy to integrate in an installation. Individually manufactured fronts are available to match the loudspeakers to differently sized video displays. Fitted with two high excursion 5" chassis and three horn-loaded 1.1" tweeters, the system operates on the "3-source" principle to achieve high directivity in the vertical axis for increased throw combined with exceptionally smooth horizontal coverage.

PRODUCT SPECIFICATIONS

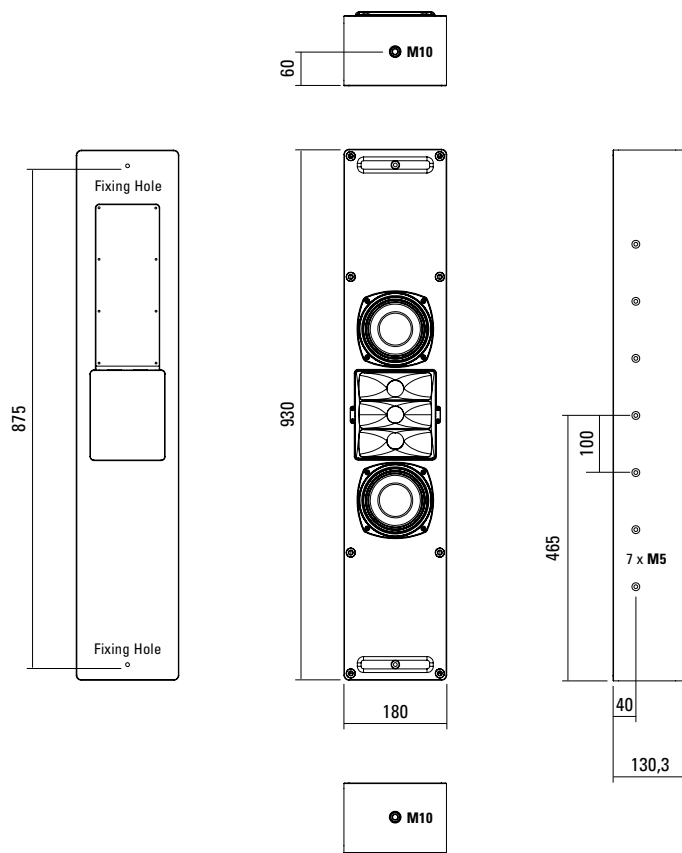
Speaker Components	2 x 5" (1,5" VC) / 3 x 1" Nd (1,1" VC)
Description	Multi Media Column
Power AES / Peak	200 W / 600 W
Impedance nominal	4 Ω
SPL 1 W / Peak @ 1 m	90 dB / 118 dB
Usable Range	50 Hz - 20 kHz (-6 dB)
Tuning Frequency excursion minimum	55 Hz
X - Overpoint acoustical	1200 Hz
Coverage horizontal / vertical	100° x 25°
Connectors	2 x Neutrik Speakon NL4MP in/out Coding: 1 +/- HiMid, 2 +/- loop thru
Rigging / Fittings	2 x M10, 14 x M5, 2 x fixing holes
Weight	8,5 kg
Size height x width x depth	93,0 x 18,0 x 13,7 cm
Order No.	00120 (incl. Front Cover)



The tweeter unit can be tilted by +/- 10 °.

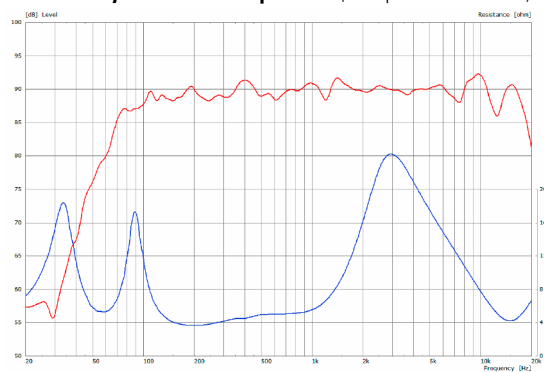


DIMENSIONS

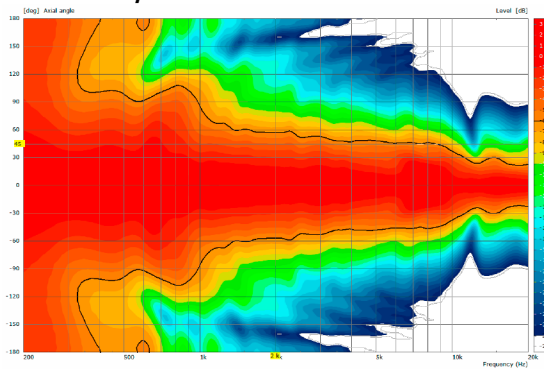


MEASUREMENTS

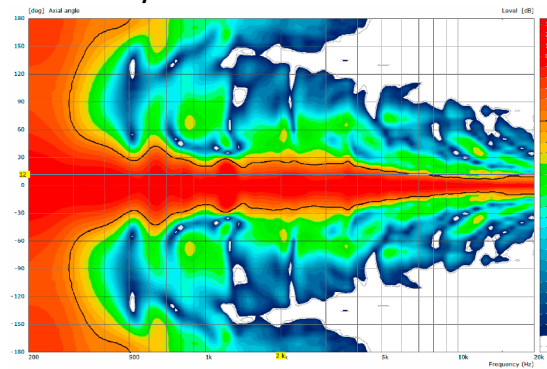
Sensitivity 1 W @ 1 m + Impedance (with passive crossover)



2D Directivity Plot - horizontal



2D Directivity Plot - vertical





Mounting on traverse



Mounting on wall

Invisible wall mounting by means of two screws, which are carried through the casing.



Mounting in wall



Montage with Mounting Kit (00120/MK)
> Display

ACCESSORIES

Mounting Kit

one pair, for TriSource 10 in combination with displays using VESA fixing points, width variable 1580 mm -> 1985 mm (2 x 5 parts), incl: 4 x M6 x 16 screws, 2 x M5 x 16 screws

Order No. **00120/MK**



Angle Bracket

for TriSource, 90° angle, depth: 110 mm

Order No. **08135/110**

Order No. **08135/110/w** (RAL 9010)



MultiRigg™

swiveling fastening solution for horizontal and vertical alignment, for flown / ground stacked / mounted applications, incl. accessories (2 x knurled screws M10 x 20 mm, 1 x handle screw M8 x 55 mm), max. load 50 kg

Order No. **01360**



Adapter

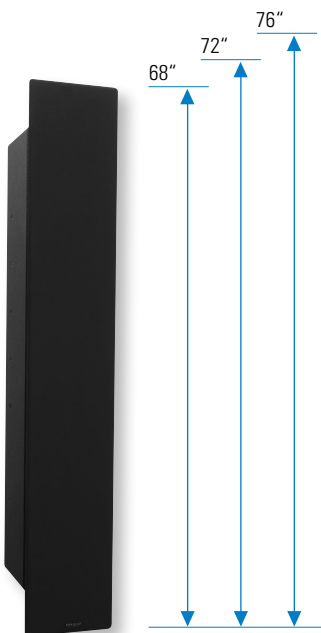
for MultiRigg™ /MultiRigg™ light for mounting on M10, incl. 1 x M10 x 25 mm screw, max. load 20 kg

Order No. **01358**



FRONTCOVER

Individually manufactured fronts are available to match the loudspeakers to differently sized video displays.



Front Cover - Customized



Front Cover - Standard



L-Front Cover -Customized

Front Cover

Customized

Order No. **00120/Front/custom**

Front Cover

Standard

Order No. **00120/Front**

L-Front Cover

Customized

Order No. **00120/L-Front**