

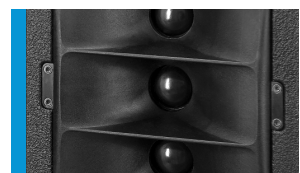
Multi Media Column **TriSource 10 dp**



The TriSource 10 dp loudspeaker system is specifically designed for use in combination with large-format video displays in applications where very high sound quality in combination with a long throw is required. The shallow depth and neutral appearance of the enclosure make the system easy to integrate in an installation. Individually manufactured fronts are available to match the loudspeakers to differently sized video displays. Fitted with two high excursion 5" chassis and three horn-loaded 1.1" tweeters, the system operates on the "3-source" principle to achieve high directivity in the vertical axis for increased throw combined with exceptionally smooth horizontal coverage. The integrated amplifier electronics are based on Class D power amplifiers, which are controlled via particularly low-noise FPGA DSP processing. Various factory-configured presets and volume settings can be called up. Remote monitoring and control is carried out via the Ethernet interface using SEEBURG Network Manager. Signal transmission (AoE) in accordance with the AES 67 standard is also possible.

PRODUCT SPECIFICATIONS

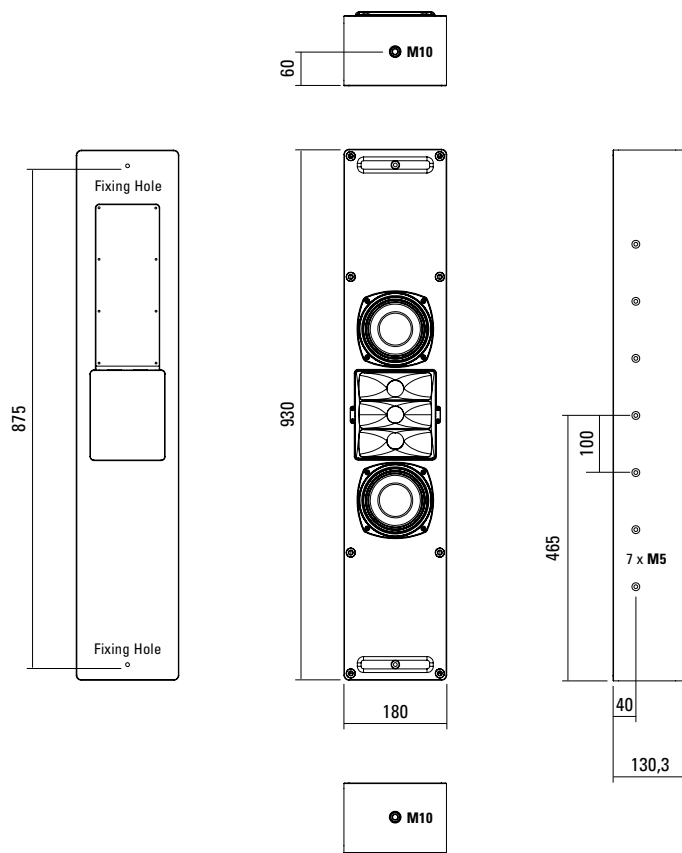
Speaker Components	2 x 5" (1,5" VC) / 3 x 1" Nd (1,1" VC)
Description	Multi Media Column
Amp Power AES	LF: 280 W / HF: 100 W / 110-230 V
Rated Current	0,2 A @ 230 V
SPL Peak @ 1 m	118 dB
Max. Input Signal	25 dBu
DSP	DPLMx FPGA Processing 32 bit floating point
AD / DA	24 bit / 96 kHz
Latency	0,8 ms (analog in to analog out)
Usable Range	50 Hz - 20 kHz (-6 dB)
Tuning Frequency excursion minimum	55 Hz
X - Overpoint acoustical	Depends on preset
Coverage horizontal / vertical	100° x 25°
Connectors	XLR in, Ethercon, Powercon in
Rigging / Fittings	2 x M10, 14 x M5, 2 x fixing holes
Weight	8,5 kg
Size height x width x depth	93,0 x 18,0 x 13,7 cm
Order No.	00120/dp (incl. Front Cover)



The tweeter unit can be tilted by +/- 10 °.

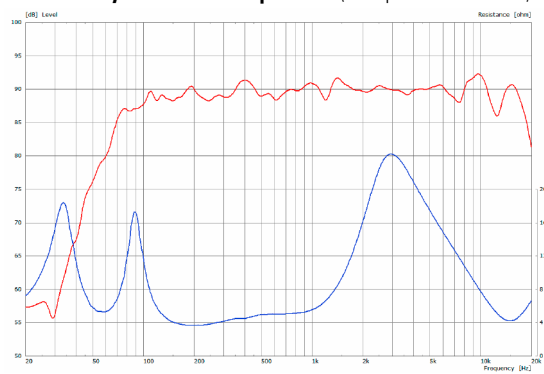


DIMENSIONS

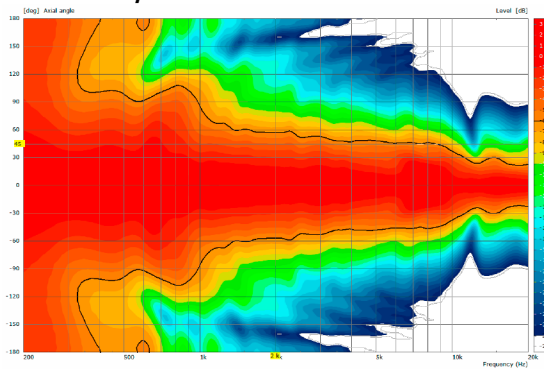


MEASUREMENTS

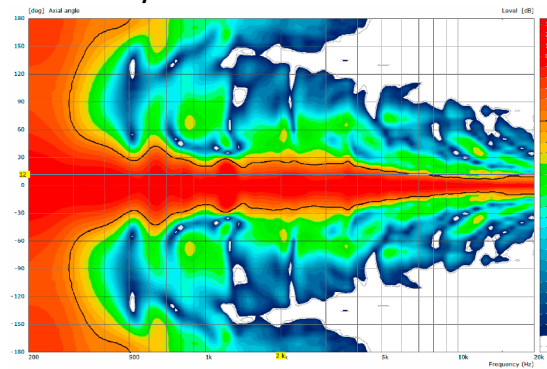
Sensitivity 1 W @ 1 m + Impedance (with passive crossover)



2D Directivity Plot - horizontal



2D Directivity Plot - vertical



The TriSource 10 dp features integrated digital amplifier electronics with a DSP controller (dp = digitally powered). Various factory-configured presets and volume settings can be called up directly on the box or via a network connection.

High-grade electronic components from the industrial sector and a first-class circuit design ensure excellent audio quality with low distortion and a minimal noise floor. Highly efficient and "intelligent" limiter systems ensure optimum protection against overload, without restricting the possibilities offered by this high-performance sound system.

Powercon (blue)

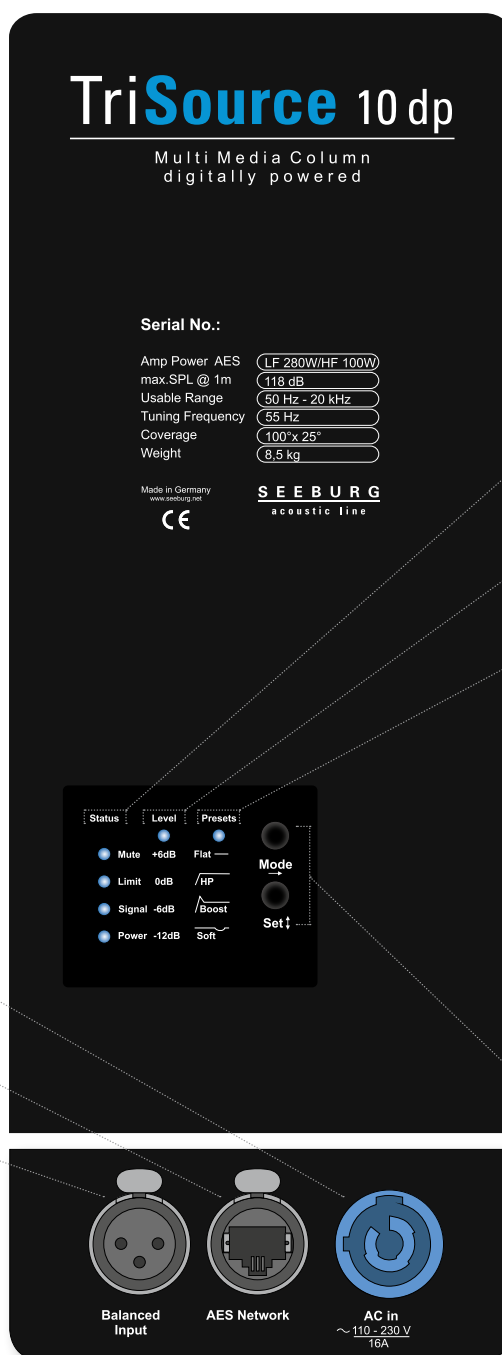
Spannungsversorgung
~110-230 V / 16 A max.

Ethercon

Interface for remote control and audio transfer via ethernet (AES 67).

XLR

- Symmetrical analog input.
- Effective filter protection against HF interference and DC Voltages.
- Electronically balanced to prevent noise.



[Presets > Quick Start Manual](#)

Status

Mute LED

Red light when the system is muted or under technically critical conditions.

Limit LED

Yellow light when the limiter is restricting the level.

Signal LED

Green light when the input signal exceeds -20 dBu

Power LED

Green light when the system is switched on.

Level

Adjustment in 3 dB steps (- 12 dB to + 6 dB).

Presets

Flat

This setting provides a linear frequency response with a neutral sound characteristics. Standard setting for many applications.

HP

Switches in a high pass filter for use in combination with a subwoofer.

Boost

The same neutral response as the „Flat“ setting, but with the addition of a bass boost.

Soft

Reduces the level in the frequency range from 2.5 - 5 kHz, to which the ear is particularly sensitive. This setting is recommended for high level reproduction of highly compressed music tracks.

Mode - key

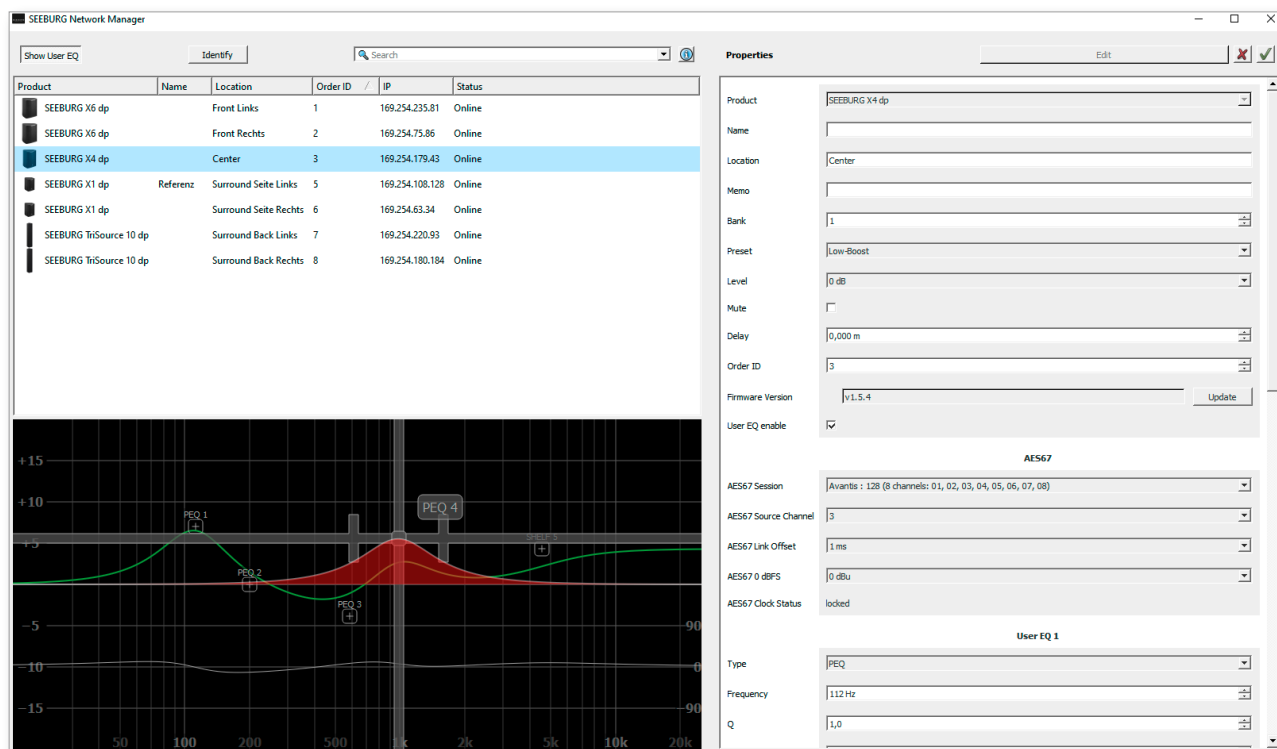
Switches between control modes Status, Level and Presets.

Set - key

Setting of various values and Mute on / off.

SEEBURG NETWORK Manager

With the Software SEEBURG Network Manager all selfpowered systems can be controlled via network.



Features:

- > **Remote control** of functions such as recalling presets and banks, level control and mute, and locking the controls on the loudspeakers.
- > **Visual display** of all systems connected to the control network.
- > Storable names and location labels with a **global search function**.
- > **Selection of loudspeakers** in the list for simultaneous set-up and control changes.
- > **Fully parametric user EQs and delay settings** for time alignment, with a graphical user interface
- > **Time Delay** with up to **2.8 seconds runtime**.
- > **Audio-over-Ethernet (AoE)** via **AES 67**.
- > Connection with **media control systems** via **API**.
- > Basic **network settings**.
- > **Documentation** is available **online**.
- > **Identification function** by way of flashing LEDs on the dp loudspeaker systems.
- > **Firmware updates** can be applied.



[SEEBURG Network Manager > Quick Start Manual \(pdf\)](#)

AES NETWORK interface

All selfpowered systems are equipped as standard with an **AES Network interface**.

This is used for **remote control** via the **SEEBURG Network Manager** and for **Audio-over-Ethernet (AoE) audio transmission** via **AES 67**.



AES Network



Mounting on traverse



Mounting on wall

Invisible wall mounting by means of two screws, which are carried through the casing.



Mounting in wall



Montage with Mounting Kit (00120/MK)
> Display

ACCESSORIES

Mounting Kit

one pair, for TriSource 10 in combination with displays using VESA fixing points, width variable 1580 mm -> 1985 mm (2 x 5 parts), incl: 4 x M6 x 16 screws, 2 x M5 x 16 screws
Order No. **00120/MK**



Angle Bracket

for L-Series / TriSource,
max. load 20 kg

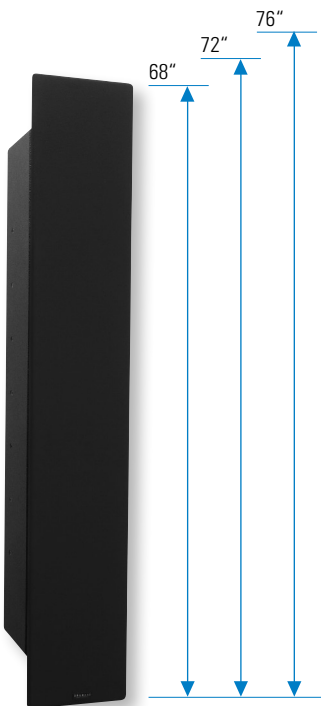
Order No. **08149/angle**

Order No. **08149/angle/w** (RAL 9010)



FRONTCOVER

Individually manufactured fronts are available to match the loudspeakers to differently sized video displays.



Front Cover - Standard



L-Front Cover

Front Cover

Customized

Order No. **00120/Front/custom**

Front Cover

Standard

Order No. **00120/Front**

L-Front Cover

Customized

Order No. **00120/L-Front**