

# Bass Extension - digitally powered K Sub 1801 dp



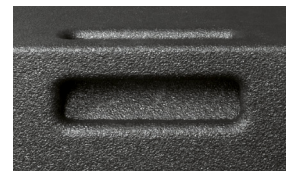
The K Sub 1801 is a compact high-power subwoofer for universal use in the frequency range of 33 Hz to 140 Hz. The classic bass reflex design with streamlined ports leads to an exceptional precise and deep bass response with medium throw. Two ergonomic handles ensure perfect handling. For transportation, a wheelboard can be mounted to the front side. The integrated amplifier electronics deliver 2400 watts (AES) and are based on Class D power amplifiers, which are controlled via particularly low-noise FPGA DSP processing. Various factory-configured presets and volume settings can be called up. Remote monitoring and control is carried out via the Ethernet interface using SEEBURG Network Manager. Signal transmission (AoE) in accordance with the AES 67 standard is also possible.

## PRODUCT SPECIFICATIONS

<b>Speaker Components</b>	18" (4" VC)
<b>Description</b>	Digitally Powered Bass Extension
<b>Amp Power</b>	2400 W AES @ 4 Ω
<b>Rated Current</b>	4,2 A @ 230 V
<b>SPL</b> <small>Peak @ 1 m</small>	137 dB
<b>Max. Input Signal</b>	25 dBu
<b>DSP</b>	DPLMx FPGA Processing 32 bit floating point
<b>AD / DA</b>	24 bit / 96 kHz
<b>Latency</b>	0.8 ms (analog in to analog out)
<b>Usable Range</b> <small>- 6 dB</small>	33 Hz - 100 / 120 / 140 Hz
<b>Tuning Frequency</b> <small>excursion minimum</small>	38 Hz
<b>Connectors</b>	XLR in/thru, Ethercon, Speakon NL4MP out, Powercon in/thru
<b>Handles</b>	4 x
<b>Rigging / Fittings</b>	M20 on top and side Wheel board fittings
<b>Weight</b>	45,0 kg (+7,0 kg wheel board)
<b>Size</b> <small>height x width x depth</small>	69,8 x 51,2 x 56,0 cm
<b>Order No.</b>	01060/dp



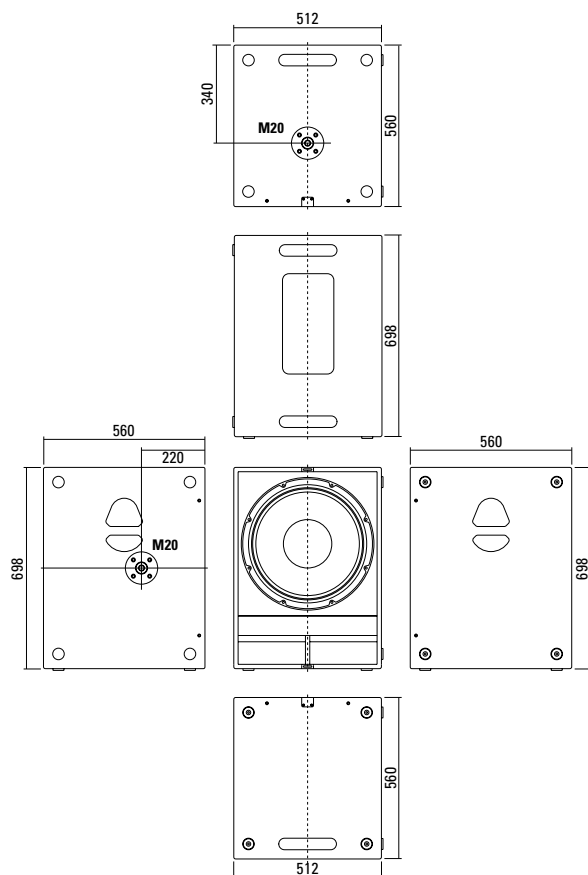
Robust front grille.



Four convenient bar handles at the corner.

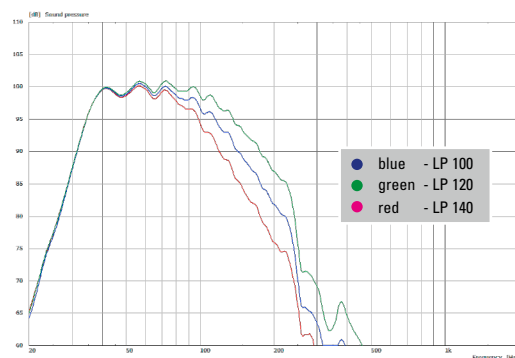


## DIMENSIONS

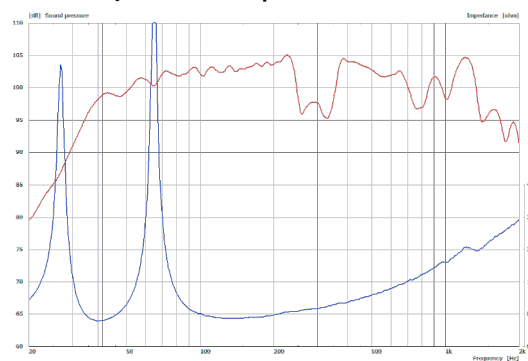


## MEASUREMENT

### Frequency Response with Presets



### Sensitivity 1 W @ 1 m + Impedance



## APPLICATIONS



2 x K Sub 1801 / K 24



K Sub 1801 / GL 24



3 x K Sub 1801 dp  
Cardioid set-up

The K Sub 1801 dp features integrated digital amplifier electronics with a DSP controller (dp = digitally powered). Various factory-configured presets and volume settings can be called up directly on the box or via a network connection.

High-grade electronic components from the industrial sector and a first-class circuit design ensure excellent audio quality with low distortion and a minimal noise floor. Highly efficient and "intelligent" limiter systems ensure optimum protection against overload, without restricting the possibilities offered by this high-performance sound system.

 [Presets > Quick Start Manual](#)

#### Level

Adjustment in 3 dB steps  
(-12 dB to +6 dB).

#### Status

##### Mute LED

Red light when the system is muted or under technically critical conditions.

##### Limit LED

Yellow light when the limiter is restricting the level.

##### Signal LED

Green light when the input signal exceeds -20 dBu

##### Power LED

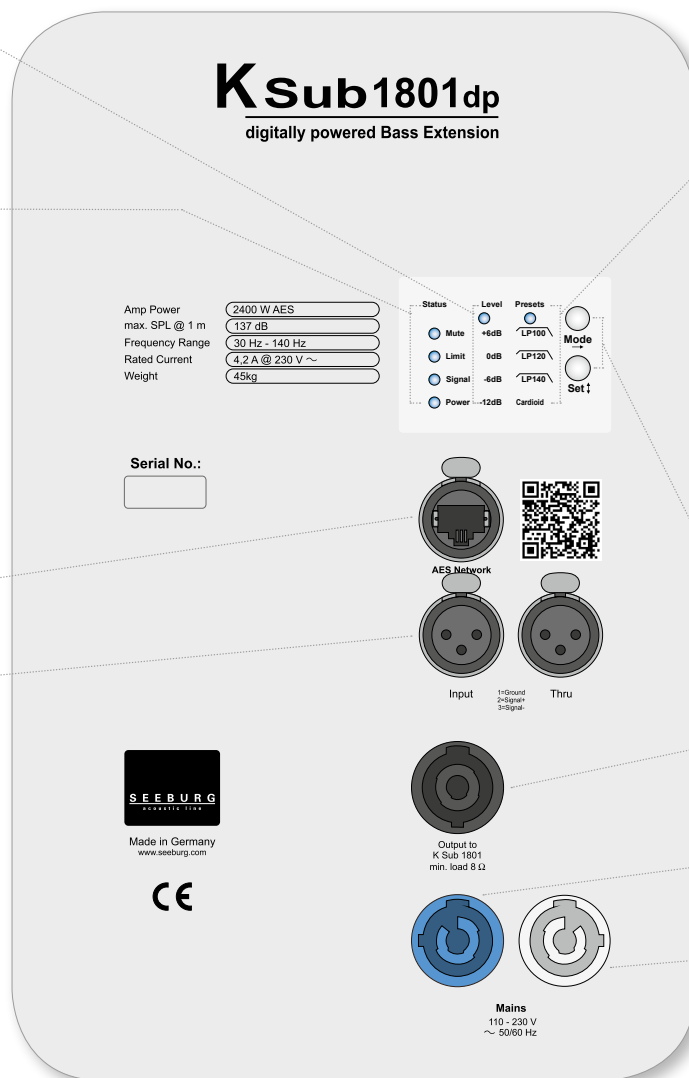
Green light when the system is switched on.

#### Ethercon

Interface for remote control and audio transfer via ethernet (AES 67).

#### XLR

- Symmetrical analog input.
- Effective filter protection against HF interference and DC Voltages.
- Virtual ground lift.



#### Presets

##### LP 100

Low Pass filter with 100 Hz cutoff frequency.

##### LP 120

Low Pass filter with 120 Hz cutoff frequency.

##### LP 140

Low Pass filter with 140 Hz cutoff frequency.

##### Cardioid mode

For directional bass reproduction in conjunction with an additional subwoofer. This mode is applied only to the rear-facing sub. The level reduction to the rear can be up to 20 dB, depending on the actual physical setup and the frequency.

#### Mode - key

Switches between control modes Status, Level and Presets.

#### Set - key

Setting of various values and Mute on / off.

##### Speakon NL4MP

Parallel output connector for a passive K Sub 1801 with an 8  $\Omega$  impedance.

##### Powercon (blue)

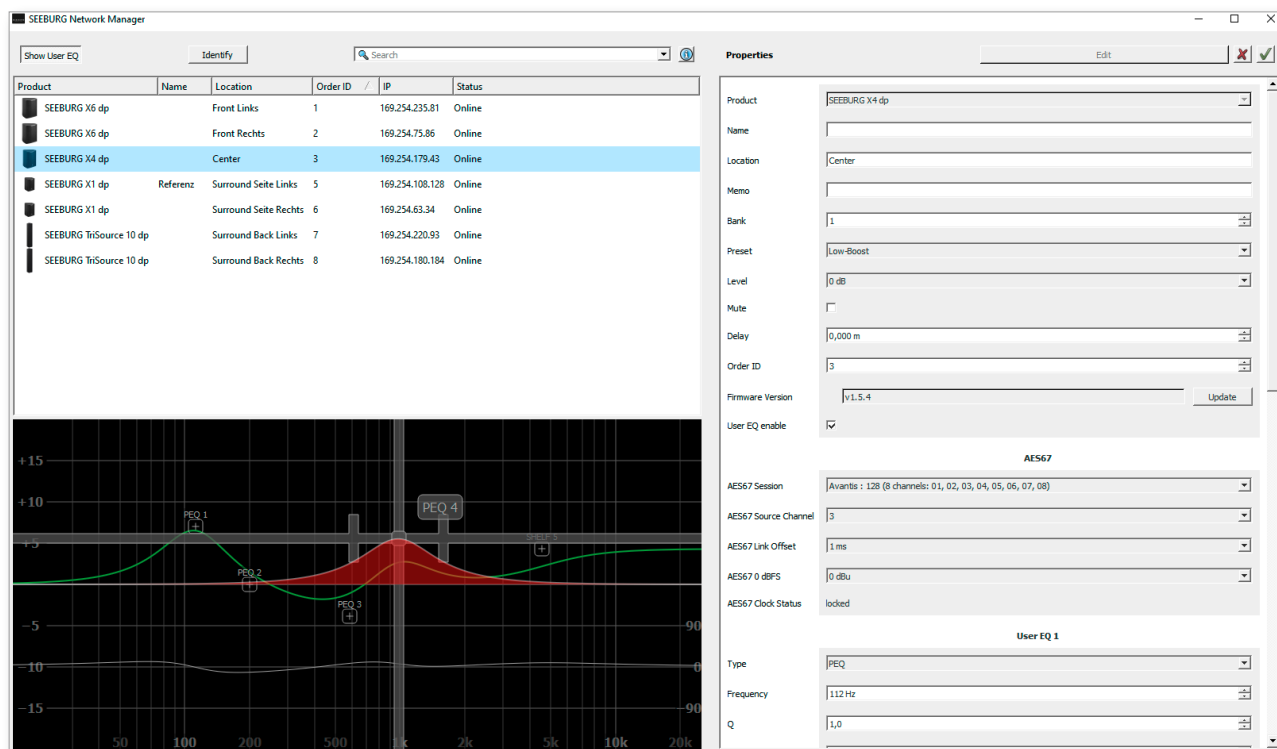
Power supply  
~ 110-230 V / 16 A max.

##### Powercon (grey)

~ 110-230 V / 16 A max.  
loop through connector

# SEEBURG NETWORK Manager

With the Software SEEBURG Network Manager all selfpowered systems can be controlled via network.



## Features:

- > **Remote control** of functions such as recalling presets and banks, level control and mute, and locking the controls on the loudspeakers.
- > **Visual display** of all systems connected to the control network.
- > Storable names and location labels with a **global search function**.
- > **Selection of loudspeakers** in the list for simultaneous set-up and control changes.
- > **Fully parametric user EQs and delay settings** for time alignment, with a graphical user interface
- > **Time Delay** with up to **2.8 seconds runtime**.
- > **Audio-over-Ethernet (AoE) via AES 67.**
- > Connection with **media control systems** via **API**.
- > Basic **network settings**.
- > **Documentation** is available **online**.
- > **Identification function** by way of flashing LEDs on the dp loudspeaker systems.
- > **Firmware updates** can be applied.



## Quick Start Guide:

[www.seeburg.com](http://www.seeburg.com) > DOWNLOADS > User Manuals

## AES NETWORK interface

All selfpowered systems are equipped as standard with an **AES Network interface**.

This is used for **remote control** via the **SEEBURG Network Manager** and for **Audio-over-Ethernet (AoE) audio transmission** via **AES 67**.



AES Network

## ACCESSORIES K Sub 1801 dp

### Speaker Pole



250 mm, ø 35 mm, M20,  
with ring lock

Order No. **03020**

### Speaker Pole

M20, with wind up

Order No. **03023**



M20, adjustable

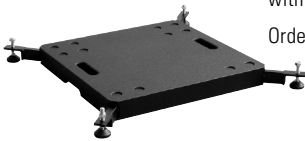
Order No. **03022**



### Ground Stacking Board

for K Sub 1801 / G Sub  
with extendable legs

Order No. **01394**



### Wheel Board

for G Sub / K Sub 1801,  
stackable, 7 kg

Order No. **01260**



### Cover

for K Sub 1801 with wheel board

Order No. **01257**



### Hybrid Cable System

PowerCon-PowerCon / XLR-XLR

5 m Order No. **08464**

10 m Order No. **08466**

15 m Order No. **08468**

