

Bass Extension - digitally powered **K Sub 1502 dp**



High performance bass reflex subwoofer. Twin long excursion 15" Neodym chassis provide accurate and highly efficient bass reproduction over a wide frequency range. A transport front cover with wheels is optionally available. The K Sub 1502 dp can be used in a horizontal or a vertical orientation as required. The integrated amplifier electronics deliver 2400 watts (AES) and are based on Class D power amplifiers, which are controlled via particularly low-noise FPGA DSP processing. Various factory-configured presets and volume settings can be called up. Remote monitoring and control is carried out via the Ethernet interface using SEEBURG Network Manager. Signal transmission (AoE) in accordance with the AES 67 standard is also possible.

PRODUCT SPECIFICATIONS

Speaker Components	2 x 15" Nd (4" VC)
Description	Digitally Powered Bass Extension
Amp Power	2400 W AES
Rated Current	3,2 A @ 230 V
SPL Peak @ 1 m	142 dB
Max. Input Signal	25 dBu
DSP	DPLMx FPGA Processing 32 bit floating point
AD / DA	24 bit / 96 kHz
Latency	0,8 ms (analog in to analog out)
Usable Range - 6 dB	37 Hz - 100 / 120 / 140 Hz
Tuning Frequency excursion minimum	45 Hz
Connectors	XLR in/thru, Ethercon, Powercon in/thru
Handles	6 x
Rigging / Fittings	M20 on top and side Wheel board fittings
Weight	50,0 kg (+ 8,5 kg wheel board)
Size height x width x depth	51,2 x 94,2 x 56,0 cm
Order No.	01059/dp

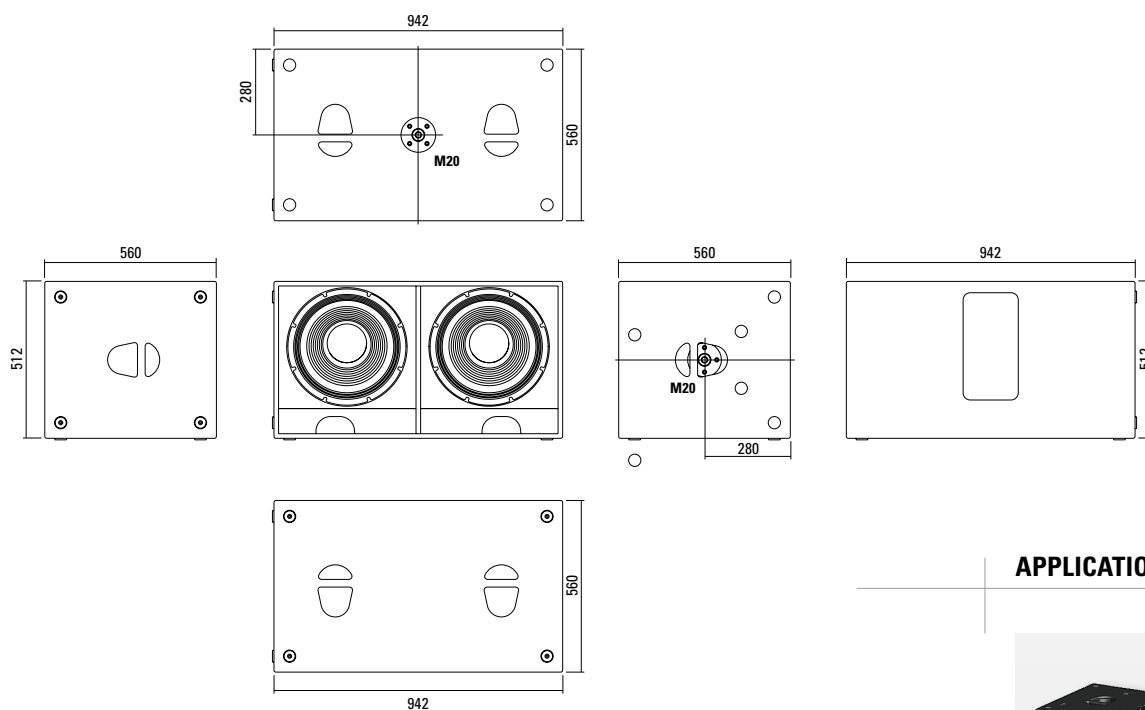


Six comfortable handles for easy handling.



Connection panel

DIMENSIONS



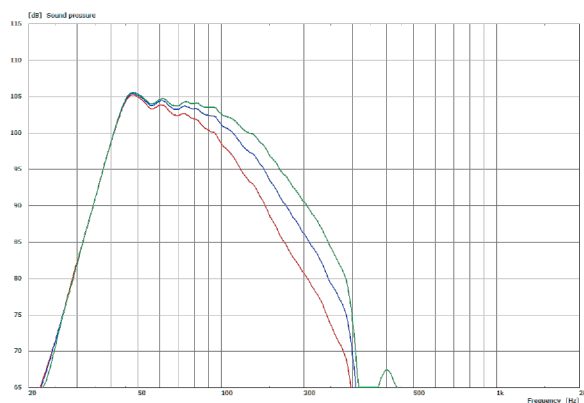
APPLICATION



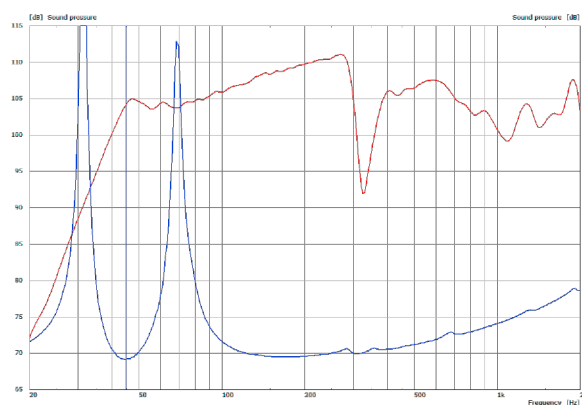
3 x K Sub 1502 dp
Cardioid set-up

MEASUREMENTS

Frequency Response with Presets



Sensitivity 1 W @ 1 m + Impedance



The K Sub 1502 dp features integrated digital amplifier electronics with a DSP controller (dp = digitally powered). Various factory-configured presets and volume settings can be called up directly on the box or via a network connection.

High-grade electronic components from the industrial sector and a first-class circuit design ensure excellent audio quality with low distortion and a minimal noise floor. Highly efficient and “intelligent” limiter systems ensure optimum protection against overload, without restricting the possibilities offered by this high-performance sound system.

 [Presets > Quick Start Manual](#)

Level

Adjustment in 3 dB steps
(-12 dB to +6 dB).

Status

Mute LED

Red light when the system is muted or under technically critical conditions.

Limit LED

Yellow light when the limiter is restricting the level.

Signal LED

Green light when the input signal exceeds -20 dBu

Power LED

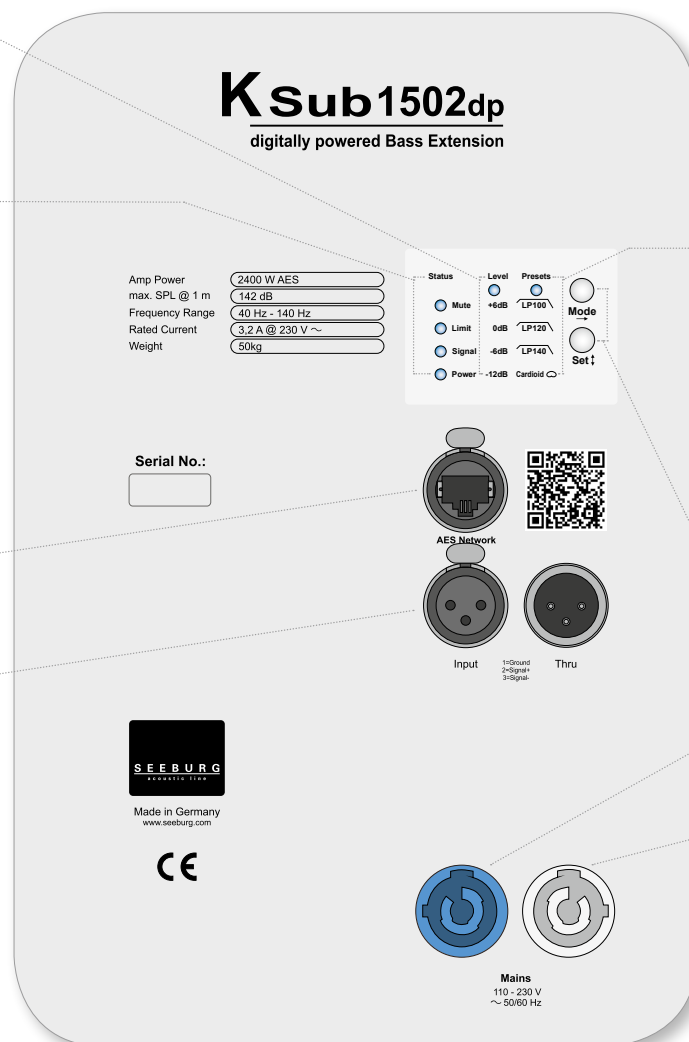
Green light when the system is switched on.

Ethercon

Interface for remote control and audio transfer via ethernet (AES 67).

XLR

- Symmetrical analog input.
- Effective filter protection against HF interference and DC Voltages.
- Virtual ground lift.



Presets

LP 100

Low Pass filter with 100 Hz cutoff frequency.

LP 120

Low Pass filter with 120 Hz cutoff frequency.

LP 140

Low Pass filter with 140 Hz cutoff frequency.

Cardioid mode

For directional bass reproduction in conjunction with an additional subwoofer. This mode is applied only to the rear-facing sub. The level reduction to the rear can be up to 20 dB, depending on the actual physical setup and the frequency.

Mode - key

Switches between control modes Status, Level and Presets.

Set - key

Setting of various values and Mute on / off.

Powercon (blue)

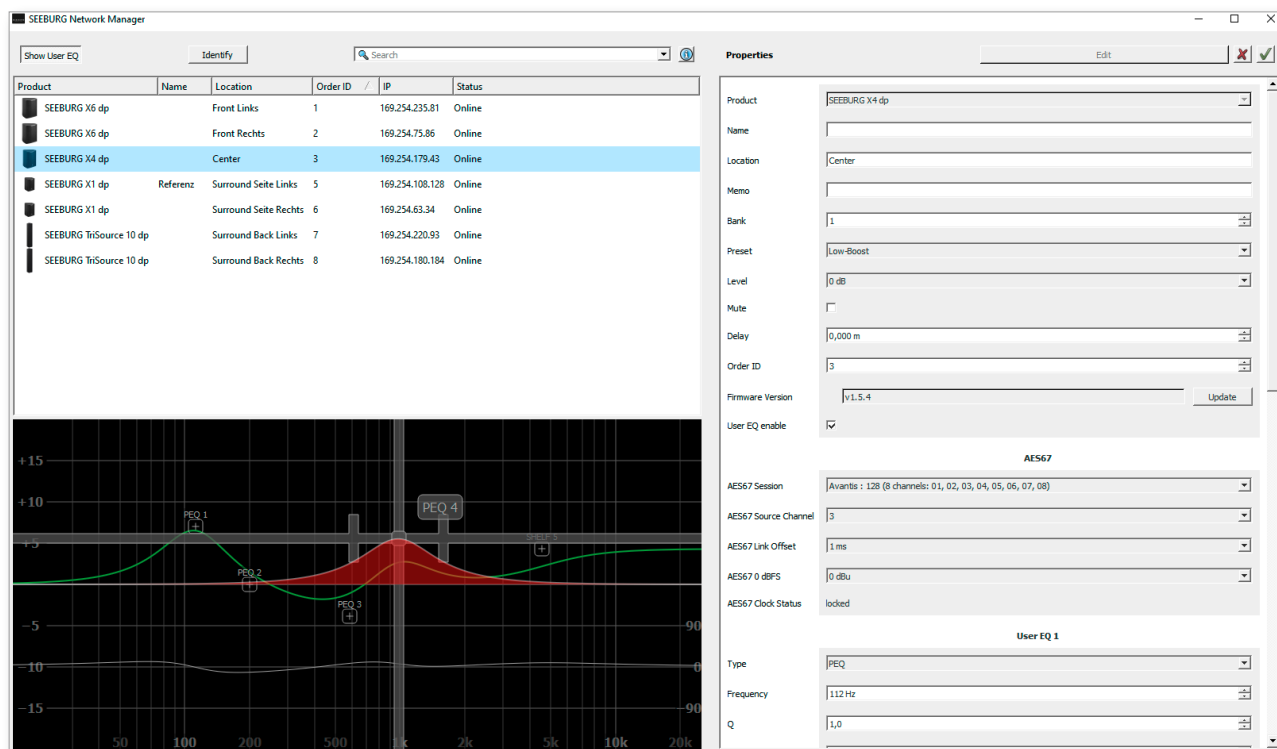
Power supply
~ 110-230 V / 16 A max.

Powercon (grey)

~ 110-230 V / 16 A max.
loop through connector

SEEBURG NETWORK Manager

With the Software SEEBURG Network Manager all selfpowered systems can be controlled via network.



Features:

- > **Remote control** of functions such as recalling presets and banks, level control and mute, and locking the controls on the loudspeakers.
- > **Visual display** of all systems connected to the control network.
- > Storable names and location labels with a **global search function**.
- > **Selection of loudspeakers** in the list for simultaneous set-up and control changes.
- > **Fully parametric user EQs and delay settings** for time alignment, with a graphical user interface
- > **Time Delay** with up to **2.8 seconds runtime**.
- > **Audio-over-Ethernet (AoE) via AES 67.**
- > Connection with **media control systems via API.**
- > Basic **network settings**.
- > **Documentation** is available **online**.
- > **Identification function** by way of flashing LEDs on the dp loudspeaker systems.
- > **Firmware updates** can be applied.



Quick Start Guide:

www.seeburg.com > DOWNLOADS > User Manuals

AES NETWORK interface

All selfpowered systems are equipped as standard with an **AES Network interface**.

This is used for **remote control** via the **SEEBURG Network Manager** and for **Audio-over-Ethernet (AoE) audio transmission via AES 67.**



AES Network

ACCESSORIES K Sub 1502 dp

Speaker Pole

M20, with wind up

Order No. **03023**



M20, adjustable

Order No. **03022**



Wheel Board

for K Sub 1502,
stackable, 8,5 kg

Order No. **01263**



Cover

for K Sub 1502, with wheel board

Order No. **01251**



Hybrid Cable System

PowerCon-PowerCon / XLR-XLR

2,5 m Order No. **08462**

5 m Order No. **08464**

10 m Order No. **08466**

15 m Order No. **08468**



Removable wheel board for
simple transportation.