

Two-Way Line Array **Galeo C**



A compact and versatile high performance Line Array featuring various innovative acoustical and mechanical solutions. This 2 x 8" / 1.4" system is driven two-way active. The Galeo C is a visually unobtrusive sound reinforcement system equally suited to high end permanent installations and demanding tour applications. A choice of horizontal coverage angles of 70° or 100° is provided by the interchangeable AMR horn elements. The maximum splay angle of 14° allows a high degree of curvature in the line array with a small number of cabinets. The innovative integrated flying hardware allows the curving angle to be set after the system has been lifted up, thereby simplifying the set-up process.

PRODUCT SPECIFICATIONS

Speaker Components	2 x 8" Nd (2,5" VC) / 1,4" Nd (3" VC)
Description	Two-Way Line Array Unit
Power <small>AES / Peak</small>	LF: 600 W / 1800 W HF: 110 W / 330 W
Impedance <small>nominal</small>	LF: 16 Ω / HF: 16 Ω
SPL <small>1 W / Peak @ 1m</small>	LF: 98 dB / 131 dB HF: 111 dB / 136 dB
Usable Range	80 Hz - 20 kHz (- 6 dB)
Tuning Frequency <small>excursion minimum</small>	85 Hz
X-Overpoint <small>acoustical</small>	Depends on preset
Coverage <small>horizontal x vertical</small>	100° x 14° (100°-version) 70° x 14° (70°-version)
Max. Splay Angle	14°
Connectors	2 x Speakon NL4 in/out Coding: 1 +/- HF, 2 +/- LF
Handles	4 x
Rigging / Fittings	6 x M10 Integrated flying hardware
Weight	22 kg
Size <small>height x width x depth</small>	24,0 x 58,0 x 46,0 cm
Order No.	00410/100 (100°- Version) 00410/70 (70° - Version)

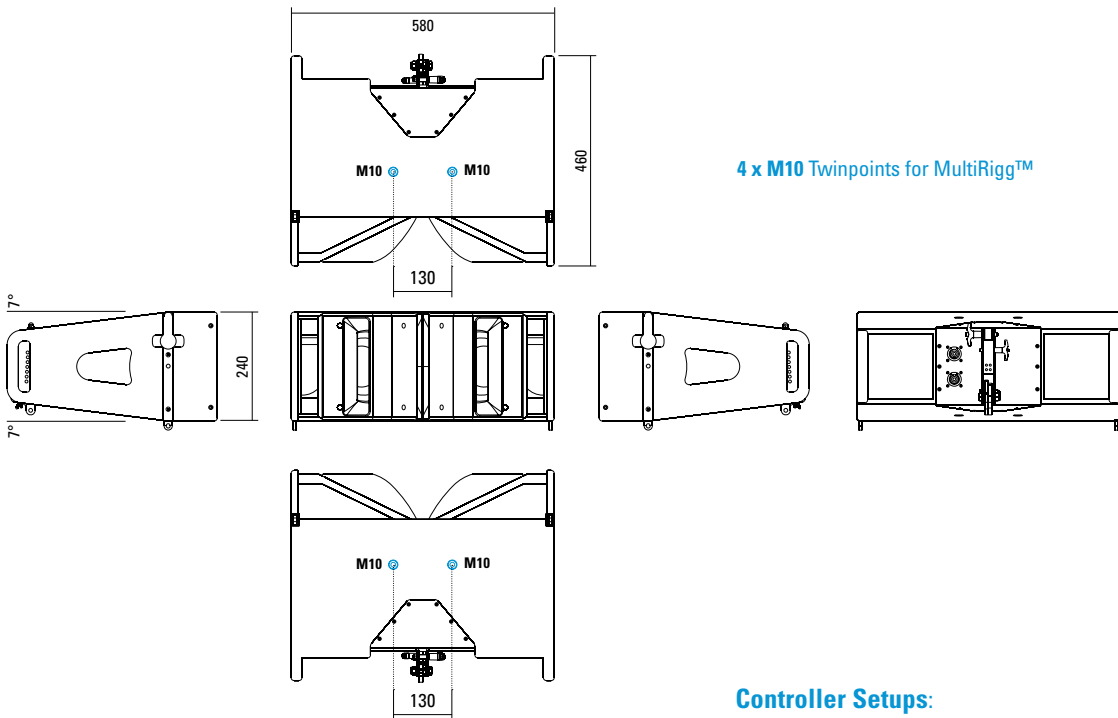


100° Version.



MultiRigg™ Hardware.

DIMENSIONS



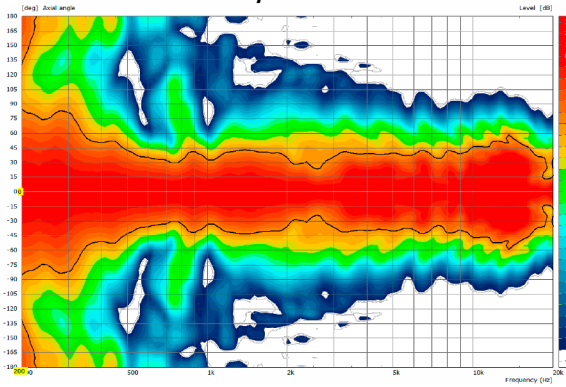
4 x M10 Twinpoints for MultiRigg™

Controller Setups:

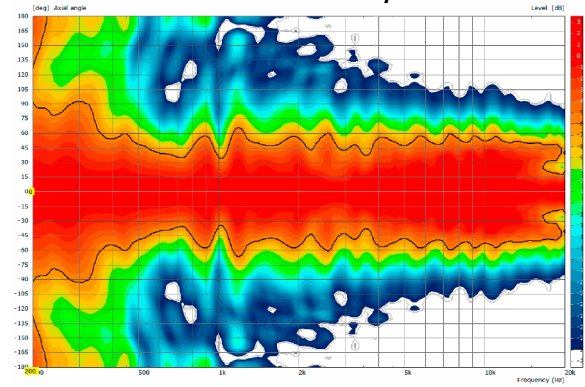
<https://www.seeburg.com/en/downloads>

MEASUREMENTS

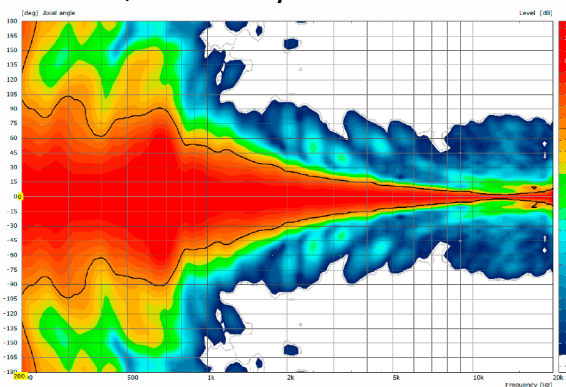
Galeo C 70° - 2D Directivity Plot - horizontal



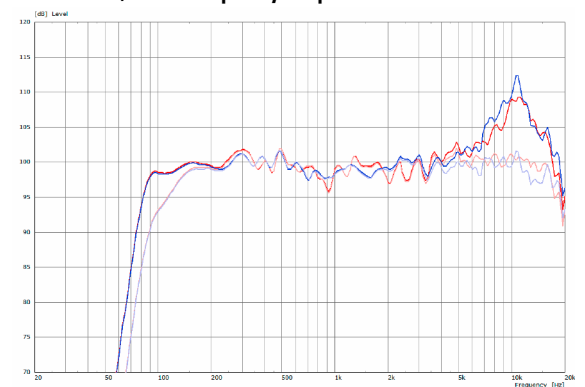
Galeo C 100° - horizontal - 2D Directivity Plot



Galeo C 70° / 100° - Directivity Plot - vertical



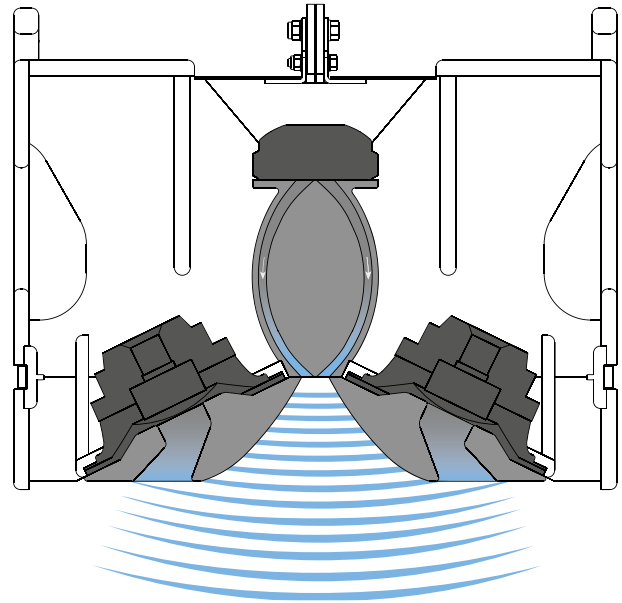
Galeo 70° / 100° - Frequency Response with Presets



AMR® PRINCIPLE

The AMR horn panels contain integrated channels which allow the sound waves generated by the low-mid speakers mounted behind the horn to pass through. For sound waves in the frequency range generated by the 1.4" HF driver, these channels behave as if they were sealed, due to the air mass inside the channels acting as a reflector (AMR = Air Mass Reflection).

The low-mid speakers are coupled to an acoustical band pass filter with a center frequency close to the crossover frequency between the Mid and HF drivers. This construction provides smooth horizontal dispersion over a wide frequency range. Another asset is the extreme compactness of this design.



Vertical Characteristic / Cylindrical wave front

The acoustic coupling between multiple Galeo C units produces a cylindrical wave front. The bundling of the acoustical energy means, that the system has a longer throw. The vertical coverage angle is determined by the number of Galeo C units, and their angle relative to one another. The longer the array, the longer the throw.

AMR® REFLECTORS



By exchanging the AMR Reflectors, the horizontal dispersion can be changed from 70° to 100° and back according to demand.

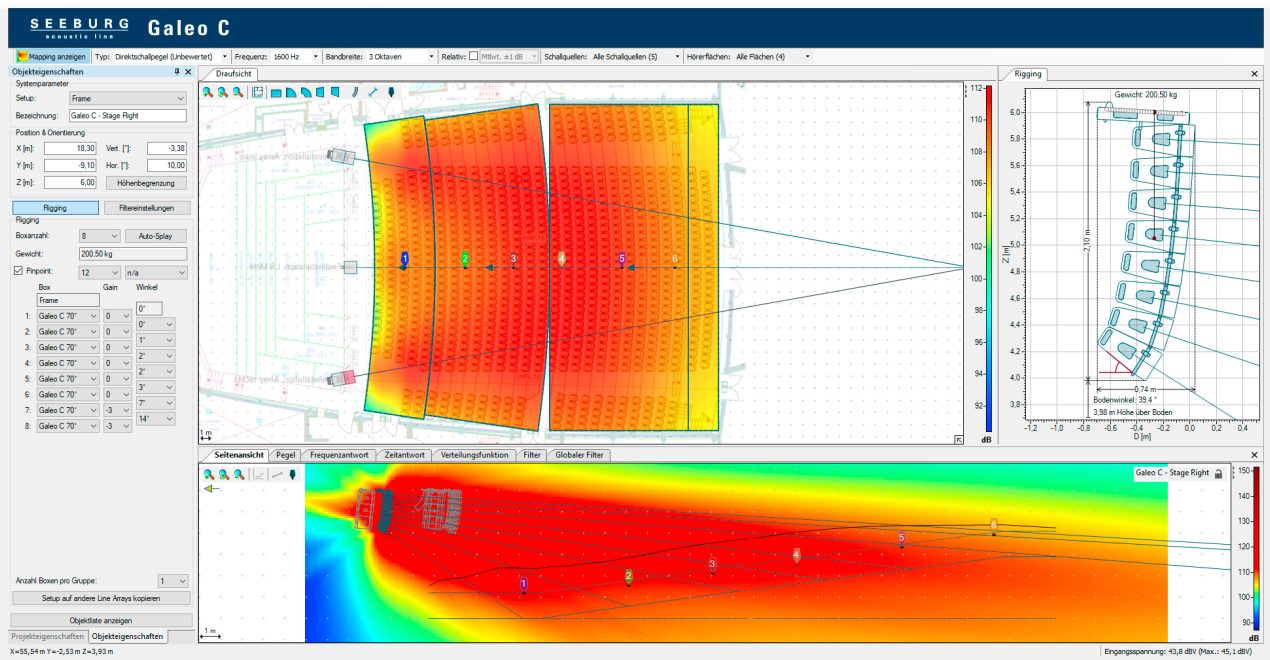
The more tightly bundled 70°- versions of the Galeo C system was developed especially for narrower audience areas. Thanks to the patented Air Mass Reflection principle, it is characterised by extremely precise and even directivity.

The simulation program.

The EASE-FOCUS 3 software is available for use in the calculation of splay angles and expected coverage characteristics. The program has been especially adapted for the Galeo system. The completed simulation can be exported in printable form as a pdf file to assist the technician in the installation of the system.

Software EASE-FOCUS 3:

<https://www.seeburg.com/en/downloads>



Objekteigenschaften

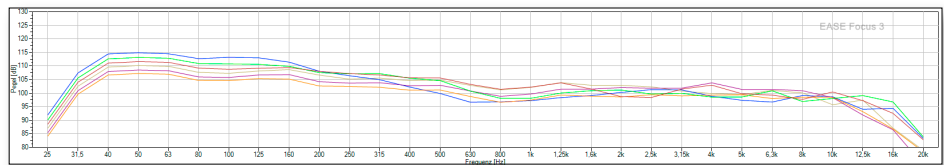
Systemparameter
 Setup: Frame

Bezeichnung: Galeo C - Stage Right

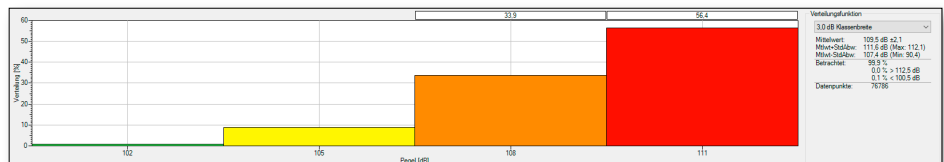
Position & Orientierung
 X [m]: 18.30 Vert. [°]: -3.38
 Y [m]: -9.10 Hor. [°]: 10.00
 Z [m]: 6.00 Höhenbegrenzung

Rigging
 Boxanzahl: 8 Auto-Splay
 Gewicht: 200.50 kg
 Pinpoint: 12 n/a

Box	Gain	Winkel
1: Galeo C 70°	0°	0°
2: Galeo C 70°	0°	0°
3: Galeo C 70°	0°	1°
4: Galeo C 70°	0°	2°
5: Galeo C 70°	0°	3°
6: Galeo C 70°	0°	7°
7: Galeo C 70°	-3°	14°
8: Galeo C 70°	-3°	



Simulation Frequency Response



Simulation Distribution

FLYING SYSTEM



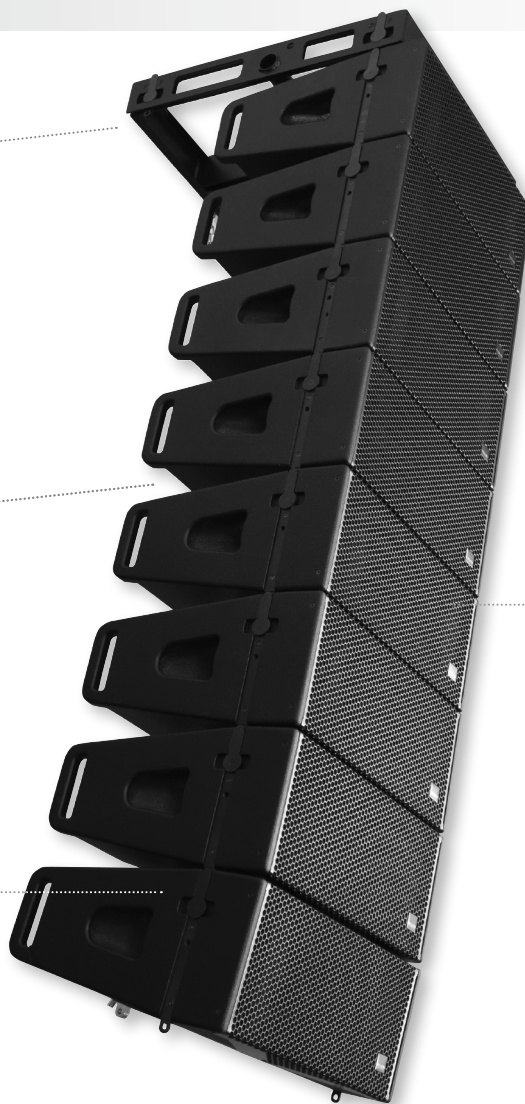
Flying Frame



Auto-locking flying fixtures.



Integrated and recessed flying hardware.



Opaque front grille.

GROUND STACKED SOLUTIONS



Flying Frame
3 x Galeo C / 2 x Galeo C Sub



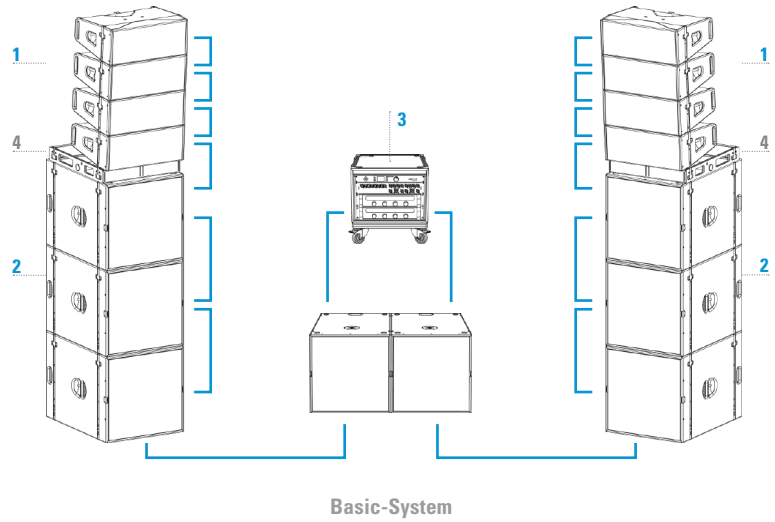
MultiRig™
2 x Galeo C / Galeo C Sub



Stacking Board
3 x Galeo C / 2 x Galeo C Sub



CONFIGURATION EXAMPLES

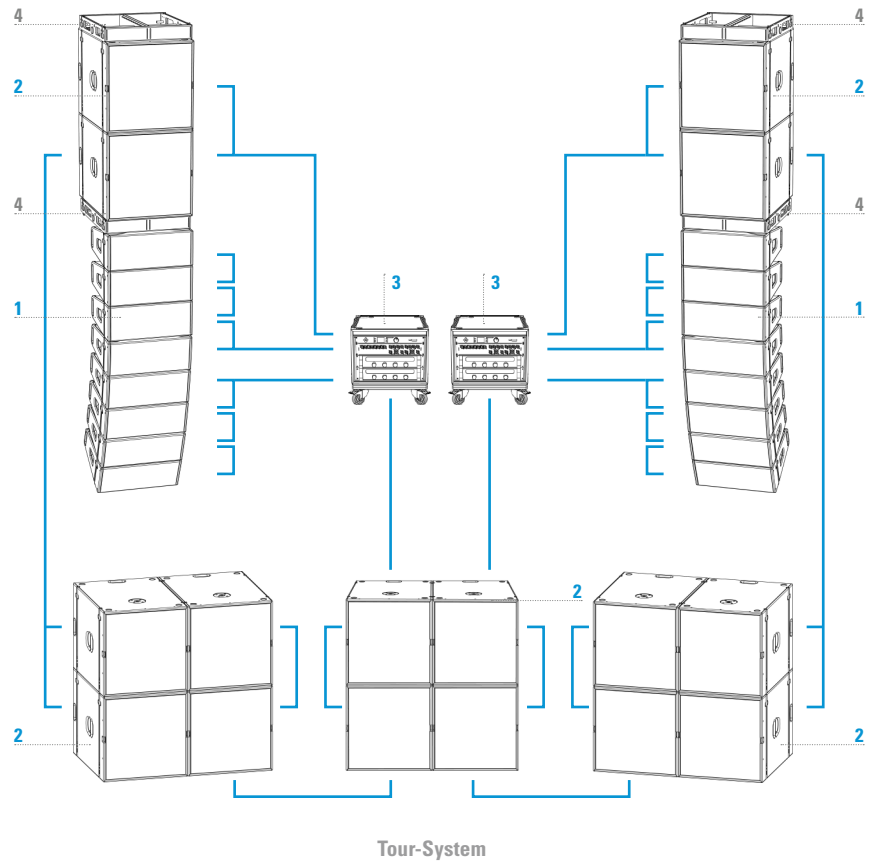


Basic-System

Components	Order No.
1 8 x Galeo C	00410/100
2 8 x Galeo C Sub	00415
3 19" x 7 Rack	10010
HDLM 8	01402
Connection Panel CP 4.8	01410
2 x 4-Channel Amping (4 x in / 8 x out)	
Accessories	Order No.
4 2 x Flying Frame	01310

Tour-System

Components	Order No.
1 16 x Galeo C	00410/70
2 16 x Galeo C Sub	00415
3 2 x 19" x 7 Rack	10010
HDLM 8	01402
Connection Panel CP 4.8	01410
2 x 4-Channel Amping (4 x in / 8 x out)	
Accessories	Order No.
4 4 x Flying Frame	01310



Flying Frame



for Galeo C / Galeo C Sub,
incl. accessories
(3 pcs. 8 x 25 mm ball lock pins,
load adapter and 100 mm distance
bar) - also for ground stack
Order No. **01326**

Stacking Board



fits: Galeo C Sub,
up to 6 x groundstacked Galeo C units,
incl. accessories (3 x ball lock pins
8 x 25, 1 x screw M20 x 80,
1 x screw M20 x 35), 3,2 kg
Order No. **01396/C**

MultiRigg™



swiveling fastening solution
for horizontal and vertical alignment,
for flown / ground stacked / mounted
applications, incl. accessories
(2 x knurled screws M10 x 20 mm,
1 x handle screw M8 x 55 mm),
max. load 50 kg
Order No. **01360**

MultiRigg™ light



version for fixed installations,
for horizontal and vertical alignment,
tiltable vertical angle,
incl. accessories (2 x M10 x 20 socket
head screws), max. load 50 kg
Order No. **01362**

MultiTilt™



Tilt adapter with adjustable tilt from
0° to 37,5° (2,5° steps), integr. pole
mount adapter with clamping device,
2 x knurled screws (M10 x 20 mm),
max. load 50 kg
Order No. **01370**

Pull Adapter - Bottom



for Galeo C top unit
Order No. **01329/B**

Pull Adapter - Top



for Galeo C flying frame
Order No. **01329/T**

Load Adapter



for Galeo C / Galeo C Sub
flying frame
Order No. **01327**

Load Adapter M10



for Galeo C / Galeo C Sub / PS 1
flying frame
Order No. **01328**

Ball Lock Pins



for Galeo C / Galeo C Sub
flying frame
Order No. **01380/6x25** (6 x 25 mm)
Order No. **01380/8x25** (8 x 25 mm)

Knurled Screw



M10 x 20 mm
Order No. **73750**
Order No. **73750/w** (RAL 9010)

Patch Cable



for Galeo C
Order No. **08448**



Stacking Board



Load Adapter

ACCESSORIES Galeo C

AMR Reflectors 100°



for Galeo C,
consisting of 2 pcs.
AMR reflectors 100°,
incl. fittings
Order No. **08139/100**

AMR Reflectors 70°



for Galeo C,
consisting of 2 pcs.
AMR reflectors 70°,
incl. fittings
Order No. **08139/70**

Cover



for 2 x 4 Galeo C top units,
with zippers for one-man handling,
4 x holes for fixing flying frame
Order No. **01234/2x4**

Rain Cover

for 4 x Galeo C top units
Order No. **01238/C/outdoor**

Utility-Box

for Galeo C-Dolly,
fits for 2 pcs. flying frames
and accessories
Order No. **01262/UB**

Dolly



for Galeo C, up to 12 stacked units,
stackable
Size (W x D): 100 x 60 cm
Order No. **01262**

Flight Case



for 4 pcs. Galeo C units, heavy duty,
10 x recessed sprung handles,
4 x scanner windows, 4 x 100 mm
blue wheels with brake, interior lined
with felt
Size (H x W x D): 79 x 104 x 56 cm
Order No. **16002/C**

Flight Case



for 2 pcs. Galeo C flying frames,
central shelf for accessories (16 cm),
6 x recessed sprung handles, 4 x 100
mm blue wheels, 2 pcs. with brake,
interior lined with felt
Size (H x W x D): 77 x 75 x 48 cm
Order No. **16003/C**

