



High-performance line array systems for optimised speech and music reproduction in acoustically challenging rooms. The precise, broad-band sound bundling to a nominal 20° (50°-GL 24 j-version) vertical dispersion is achieved through the acoustic coupling of two slightly curved line arrays, arranged one behind the other within the cabinet. This innovative arrangement is complemented by the horn guide in the high frequency range to ensure an exceptionally homogeneous and symmetrical 100° horizontal dispersion. The GL 24 system is particularly suitable for individual applications up to a distance of 25 metres, and can also be used as a downfill under the GL 16i. In the standard version, the GL 24 is a 2-way active system with separate amplifiers and controller. The xov-version includes a passive crossover, and can be operated with a single amplifier channel.

PRODUCT SPECIFICATIONS

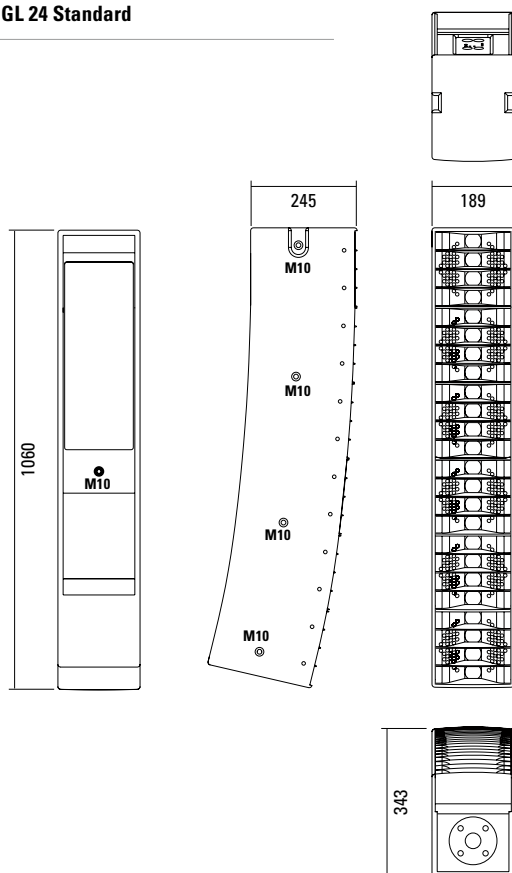
	GL 24 a	GL 24 xov
Speaker Components	6 x 6,5" Nd / 24 x 1" Nd Tweeter	6 x 6,5" Nd / 24 x 1" Nd Tweeter
Description	Cylindric Wave Radiator	Cylindric Wave Radiator
Power <small>AES / Peak</small>	LF: 600 W / 1800 W HF: 225 W / 675 W	600 W / 1800 W
Impedance <small>nominal</small>	5,3 Ω / 5,3 Ω	5,3 Ω
SPL <small>1 W / Peak @ 1 m</small>	LF: > 98 dB / 130 dB HF: > 99 / 127 dB	> 130 dB
Usable Range	80 Hz - 20 kHz (-6 dB)	80 Hz - 20 kHz (-6 dB)
Tuning Frequency <small>excursion minimum</small>	90 Hz	90 Hz
X - Overpoint <small>acoustical</small>	Depends on preset	1,1 kHz
Coverage <small>horizontal / vertical</small>	100° x 20° - degressive curved 100° x 50° - j-curved (GL 24 j)	100° x 20° - degressive curved 100° x 50° - j-curved (GL 24 j)
Mechanical Splay Angle	13° 43° (GL 24 j)	13° 43° (GL 24 j)
Connectors	2 x Speakon NL4MP in/out Coding: 1 +/- HF, 2 +/- LF	2 x Speakon NL4MP in/out Coding: 1 +/- HiMid, 2 +/- loop thru
Handles	2 x	2 x
Rigging / Fittings	9 x M10 (GL 24 / GL 24 j) 35 mm pole mount (GL 24)	9 x M10 (GL 24 / GL 24 j) 35 mm pole mount (GL 24)
Weight	20,5 kg	21 kg
Size <small>height x width x depth (cm)</small>	106,0 x 18,9 x 34,3 (24,5) 100,6 x 18,9 x 52,0 (24,5) (GL 24 j)	106,0 x 18,9 x 34,3 (24,5) 100,6 x 18,9 x 52,0 (24,5) (GL 24 j)
Order No.	00520/a 00520/j/a (GL 24 j)	00520/xov 00520/j/xov (GL 24 j)



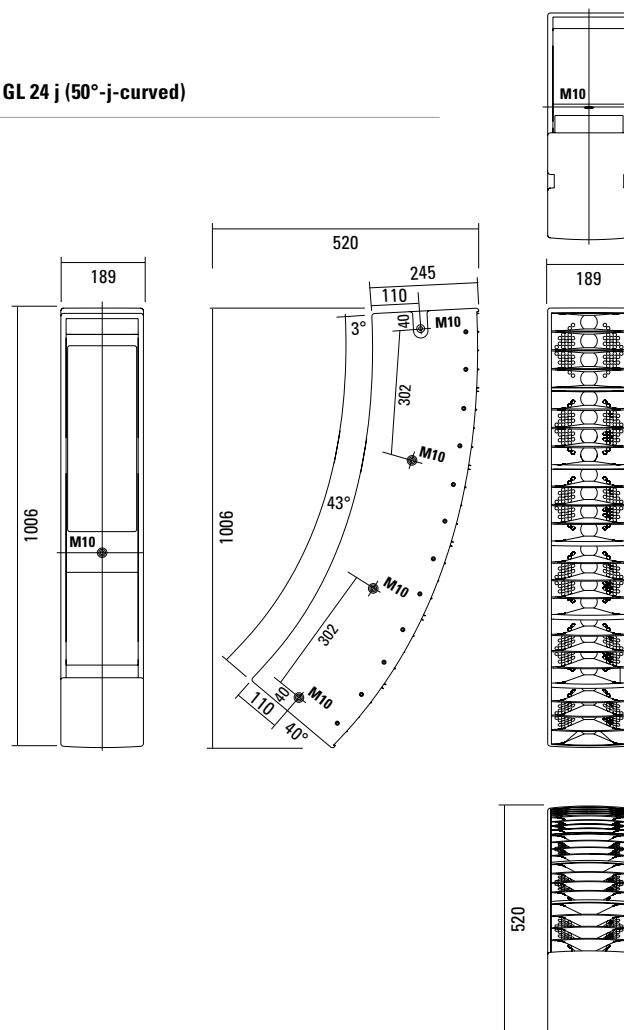
GL 24 j (50°-j-curved-version)

DIMENSIONS

GL 24 Standard



GL 24 j (50°-j-curved)



GL 24 Full Version (Extra)

Continuous internal steel frame
with integrated M10 threads.

Fitting with elongated holes
for connecting two systems together.

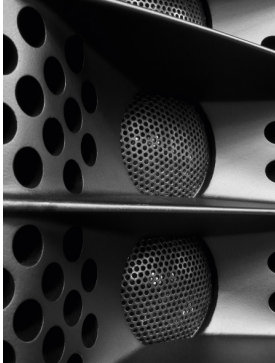


GL 8 i

GL 24 Full Version

GL 8 c



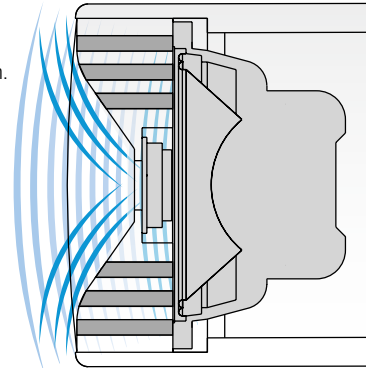


AMR® Principle.*

The AMR horn contains integrated channels which allow the sound waves generated by the low-mid speakers mounted behind the horn to pass through.

For sound waves in the frequency range generated by the 1" HF driver, these channels behave as if they were sealed due to the air mass inside the channels acting as a reflector (AMR = Air Mass Reflection).

The low-mid speakers are coupled to an acoustical band pass filter with a center frequency close to the crossover frequency between the Mid and HF drivers. This construction provides smooth horizontal dispersion over a wide frequency range. Another asset is the extreme compactness of this design.



*patentrechtlich geschützt

Controller Setups:

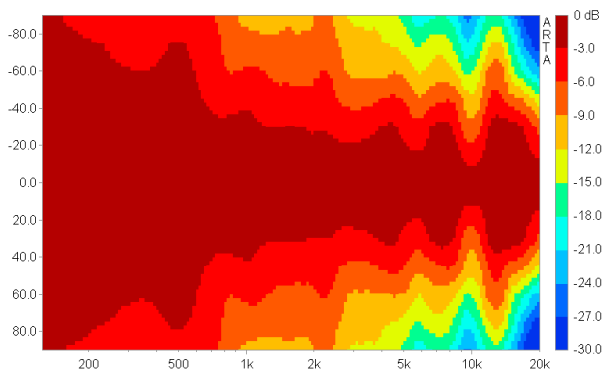


<https://www.seeburg.net/en/downloads>

COVERAGE PATTERNS

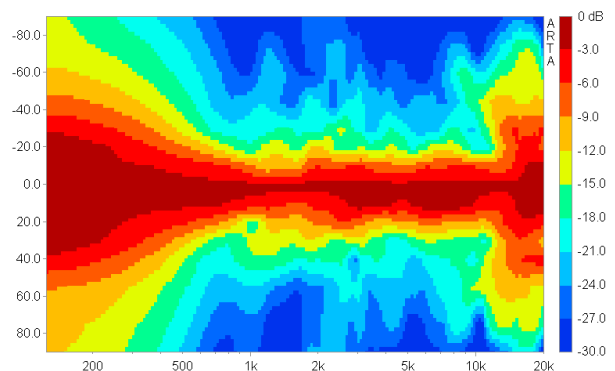
GL 24 horizontal - 2D Directivity Plot

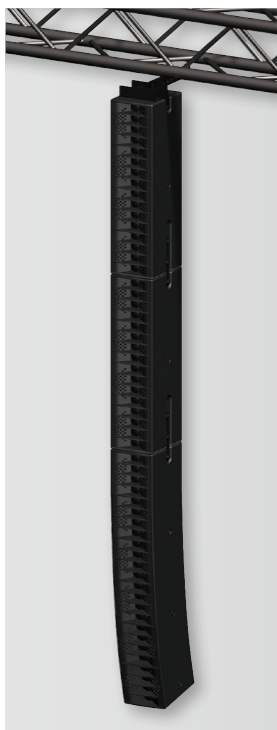
100° horizontal dispersion for good performance in wide venues.



GL 24 vertikal - 2D Directivity Plot

The j-curving leads to an unsymmetrical vertical dispersion, narrower in the upper section for long throw and wider in the lower section for near field.





2 x GL 16 i / GL 24
For applications up to 80 m distance.



GL 8 i / GL 24



GL 8 i / GL 24 j



GL 8 i / GL 24 j / GL 8 c



Flying Cradle



Integrated 35 mm pole mount.



Flying Bracket



GL 24 / G Sub 1501
For applications up to 25 m distance.



GL 16 i / GL 24 / G Sub 1801
For applications up to 40 m distance.



GL 24 / 2 x GL 16 Sub

Flying Cradle



for GL System,
max. load 120 kg
Order No. **01354**

Flying Bracket



GL 24 / GL 24 j,
incl. (black version: 4 x M10 x 20
handle screws, white version:
4 x M10 x 20 socket head screws)
Order No. **01352/GL24/set/w** (RAL 9010)
Order No. **01352/GL24/set**

Handle Screw



for flying brackets, adjustable
Order No. **08375/20** (M10 x 20)
Order No. **08375/30** (M10 x 30)

Clamping Bar



for flying bracket GL 24 / GL 24 j,
for stronger angling
Order No. **01352/clamp**

Connection Bar



GL 24 standard version → GL 8 c
for Downfill,
a pair, incl. accessories
Order No. **08159**

Pole Mount Adapter - M20



for flying bracket,
M20 x 35 mm with nut,
incl. 1 x M20 x 30 socket head screw,
1 x flat
Order No. **08127/nut**

Quick Trigger TV Clamp



Max. load 200 kg
Order No. **01223/TV**

Quick Trigger Clamp



max. load 100 kg
Order No. **01223/100 kg**

TV Adapter



M20 external thread,
28 mm Ø
Order No. **08128/M20**

Shackle



for GL flying cradle,
max. load 1000 kg
Order No. **01372/GL**

Ring Screw



M10– DIN 580
Order No. **73700** (zincd)
Order No. **73700/sw** (black zincd)

Steel Safety



6 mm x 600 mm, black,
max. load 22 kg (BGI 810-3),
quick connector undetachably
Order No. **01376/6**

Chain Fastener



VBS 7 mm
Order No. **01378**



TV Adapter -> Flying Bracket



Clamping Bar



Spacer

ACCESSORIES GL 24

Wall Mount



2 x M6 fixing holes (d=73 mm),
1 x M10 fixing hole (center),
max. load 25 kg
Order No. **03034/w** (RAL 9010)
Order No. **03034**

Spacer



for wall mount (03034),
M10 x 55 (screw),
polyurea coated
Order No. **03034/spc**

Wall Mount



for U-brackets, max. load 40 kg,
incl. screws
(M10 x 70 mm socket head screw,
M10 hex lock nut and flat washer)
400 mm
Order No. **08130/F400/w** (RAL 9010)
Order No. **08130/F400**
269 mm
Order No. **08130/F/269/w** (RAL 9010)
Order No. **08130/F/269**

Speaker Stand



K&M, incl. wind up,
height 138,5 to 218 cm,
max. load 50 kg
Order No. **03011**
K&M, height 137,5 to 218,5 cm,
max. load 50 kg
Order No. **03010**

Stretch Cover



for GL 24 / GL 24 j
Order No. **01233/stretch/black**
Order No. **01233/stretch/grey**
Order No. **01233/stretch/white**

Rain Cover



for GL 24, incl. low lid,
connectable to other covers of the
GL-system
Order No. **01233/outdoor/2**

Bag



for one unit GL 24
Order No. **01233**

Flight Case



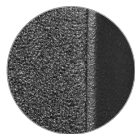
for 2 pcs. GL 24 units,
and accessories, heavy duty, 9 mm
birch multiplex, PVC coated, hinged lid,
8 x recessed sprung handles,
2 x butterfly catches, 4 x 100 mm blue
wheels, 2 pcs. with brake, stackable,
inserts for accessories, interior lined
with felt, loading measurements,
Size (H x W x D): 48,0 x 115,5 x 61,0 cm
Order No. **16013/pro/T**

EXTRAS



Grille on Front

Order No. **01179/GL 24**



Acoustic Foam on Front

Order No. **01178/GL 24**



Full Version

Integrated Flying Frame with
connecting bars
Order No. **01177/GL 24**



Colour Selection

RAL 9010, Pure White
Order No. **01199/GL 24**