



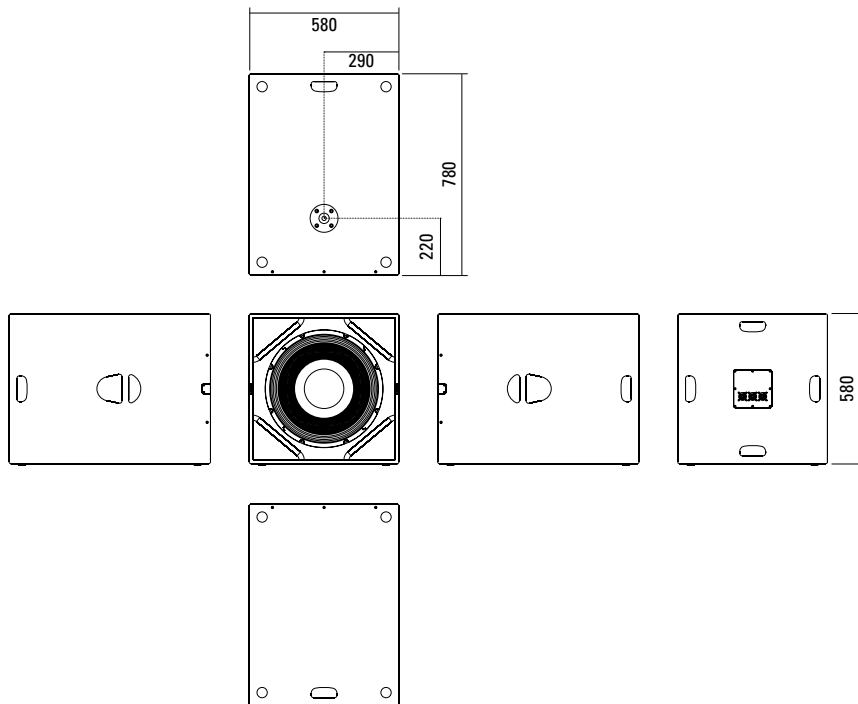
The G Sub 1801 dp is a universal 18" high-power subwoofer with truck-load compatible outside dimensions. The 58 x 75 cm footprint makes set-up with a loudspeaker pole mounted on the sub possible with even quite large mid-high systems. Mechanical and acoustic compatibility with the G Sub 1802 and Galeo C Sub allow a wide and versatile range of combination possibilities. This subwoofer combines very good handling with exceptional acoustic precision and depth of frequency. The integrated amplifier electronics are based on Class D power amplifiers, which are controlled via particularly low-noise FPGA DSP processing. Various factory-configured presets and volume settings can be called up. Remote monitoring and control is carried out via the Ethernet interface using SEEBURG Network Manager. Signal transmission (AoE) in accordance with the AES 67 standard is also possible.

## PRODUCT SPECIFICATIONS

<b>Speaker Components</b>	18" Nd (4,5" VC)
<b>Description</b>	Digitally Powered Bass Extension
<b>Amp Power</b>	1500 W AES (single Mode) / 110-230 V 2400 W AES (dual Mode) / 110-230 V
<b>Rated Current</b>	4,0 A @ 230 V
<b>SPL</b> <small>Peak @ 1 m</small>	135 dB
<b>Max. Input Signal</b>	25 dBu
<b>DSP</b>	DPLMx FPGA Processing 32 bit floating point
<b>AD / DA</b>	24 bit / 96 kHz
<b>Latency</b>	0,8 ms (analog in to analog out)
<b>Usable Range</b>	30 Hz - 200 Hz (-6 dB)
<b>Tuning Frequency</b> <small>excursion minimum</small>	36 Hz
<b>Connectors</b>	XLR in/thru, Ethercon, Speakon NL4MP out, Powercon in/thru
<b>Handles</b>	6 x
<b>Rigging / Fittings</b>	M20 on top Wheelboard fittings
<b>Weight</b>	46,5 kg (+ 8 kg wheelboard)
<b>Size</b> <small>height x width x depth</small>	58,0 x 58,0 x 78,0 cm
<b>Order No.</b>	<b>00630/dp</b>



## DIMENSIONS



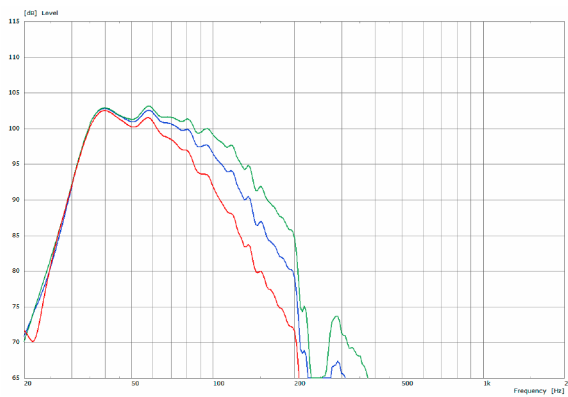
## APPLICATION



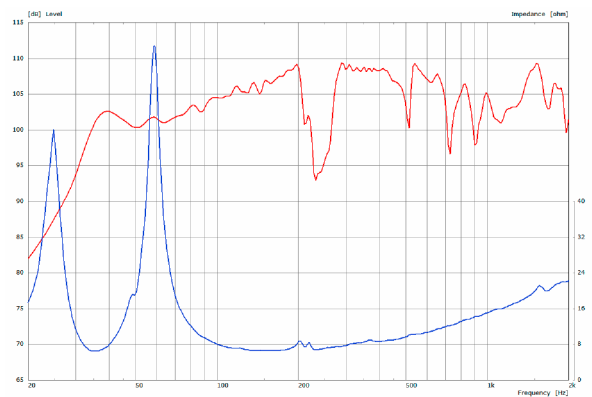
2 x Galeo C + G Sub 1801

## MEASUREMENTS

### Frequency Response with Presets



### Sensitivity 1 W @ 1 m + Impedance



The G Sub 1801 dp features integrated digital amplifier electronics with a DSP controller (dp = digitally powered). Various factory-configured presets and volume settings can be called up directly on the box or via a network connection.

High-grade electronic components from the industrial sector and a first-class circuit design ensure excellent audio quality with low distortion and a minimal noise floor. Highly efficient and “intelligent” limiter systems ensure optimum protection against overload, without restricting the possibilities offered by this high-performance sound system.

 [Presets > Quick Start Manual](#)

**Level**  
Adjustment in 3 dB steps (-12 dB to +6 dB).

**Status**  
**Mute LED**  
Red light when the system is muted or under technically critical conditions.

**Limit LED**  
Yellow light when the limiter is restricting the level.

**Signal LED**  
Green light when the input signal exceeds -20 dBu

**Power LED**  
Green light when the system is switched on.

**Ethercon**  
Interface for remote control and audio transfer via ethernet (AES 67).

**XLR**  
- Symmetrical analog input.  
- Effective filter protection against HF interference and DC Voltages.  
- Electronically balanced to prevent noise.



**Presets**  
**LP 80**  
Low Pass filter with 80 Hz cutoff frequency.

**LP 100**  
Low Pass filter with 100 Hz cutoff frequency.

**LP 120**  
Low Pass filter with 120 Hz cutoff frequency.

**Cardioidmodus**  
For directional bass reproduction in conjunction with an additional subwoofer. This mode is applied only to the rear-facing sub. The level reduction to the rear can be up to 20 dB, depending on the actual physical setup and the frequency.

**Speakon NL4MP**  
Parallel output connector for a passive G Sub 1801 with an 8 Ω impedance.

**Mode - key**  
Switches between control modes Status, Level and Presets.

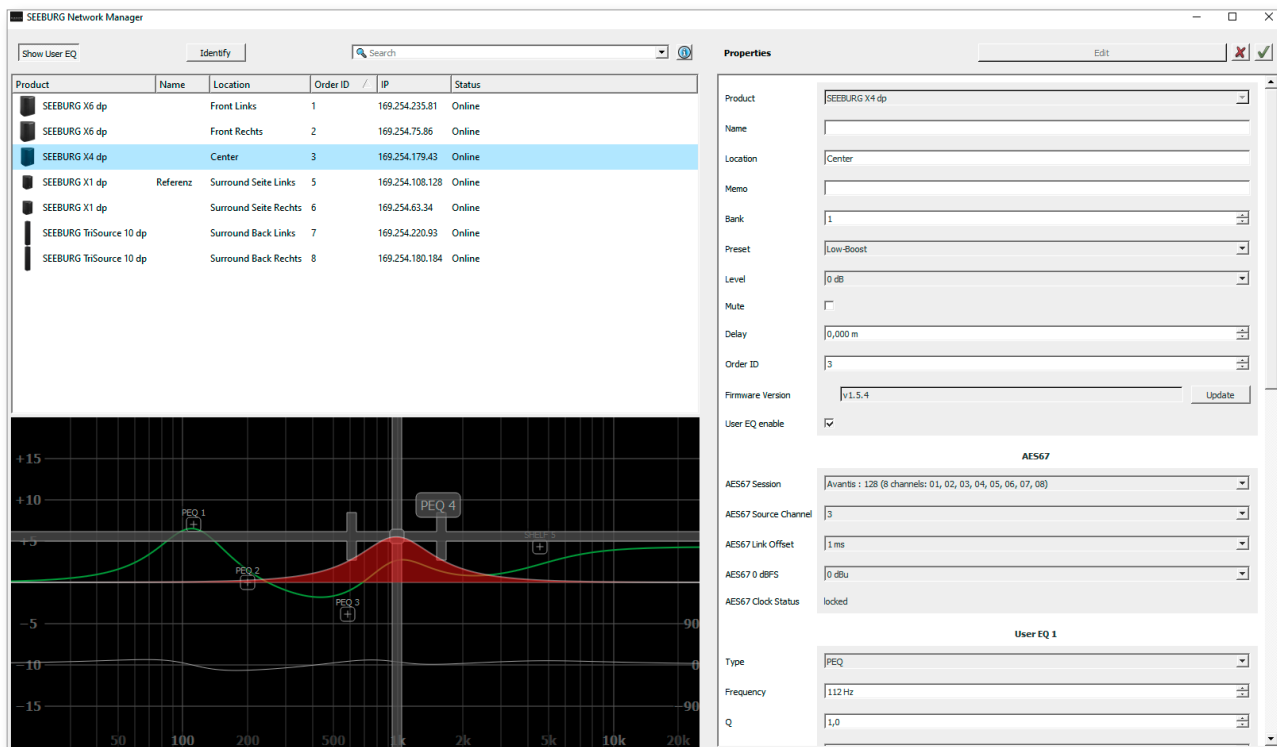
**Set - key**  
Setting of various values and Mute on / off.

**Powercon (blue)**  
Power supply  
~100-230 V / 16 A max.

**Powercon (grey)**  
~100-230 V / 16 A max.  
loop through connector

# SEEBURG NETWORK Manager

With the Software SEEBURG Network Manager all selfpowered systems can be controlled via network.



## Features:

- > **Remote control** of functions such as recalling presets and banks, level control and mute, and locking the controls on the loudspeakers.
- > **Visual display** of all systems connected to the control network.
- > Storable names and location labels with a **global search function**.
- > **Selection of loudspeakers** in the list for simultaneous set-up and control changes.
- > **Fully parametric user EQs and delay settings** for time alignment, with a graphical user interface
- > **Time Delay** with up to **2.8 seconds runtime**.
- > **Audio-over-Ethernet (AoE)** via **AES 67**.
- > Connection with **media control systems** via **API**.
- > Basic **network settings**.
- > **Documentation** is available **online**.
- > **Identification function** by way of flashing LEDs on the dp loudspeaker systems.
- > **Firmware updates** can be applied.



 [SEEBURG Network Manager > Quick Start Manual \(pdf\)](#)

## AES NETWORK interface

All selfpowered systems are equipped as standard with an **AES Network interface**.

This is used for **remote control** via the **SEEBURG Network Manager** and for **Audio-over-Ethernet (AoE) audio transmission** via **AES 67**.



AES Network

## ACCESSORIES G Sub 1801 dp

### Wheelboard



for G Sub 1801 / Galeo C Sub,  
also usable as Dolly,  
stackable, 8,0 kg  
Order No. **01268**

### Dolly



for G Sub 1801 / Galeo C Sub,  
up to 3 units, 80 x 60 cm  
Order No. **01268/Dolly**

### Twin Dolly



for up to 6 x G Sub 1801 /  
3 x G Sub 1802 / 6 x Galeo C Sub,  
118 x 60 cm  
Order No. **01273/Dolly**

### Cover



for G Sub 1801 / Galeo C Sub  
by using wheelboard  
Order No. **01234/C**

### Speaker Pole



250 mm, ø 35 mm, M20,  
with ring lock  
Order No. **03020**

### Speaker Pole



M20, with crank  
Order No. **03023**

