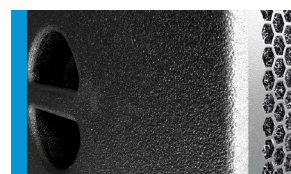




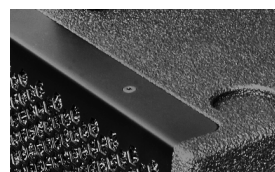
Compact high-powered 12" subwoofer with two integrated DSP controlled amplifiers. The second amplifier can be used to drive a high-mid or full range system, or a passive subwoofer. Easy handling, an exclusive and modern design and the deep bass reproduction make this a perfect choice for demanding applications. The integrated amplifier electronics are based on Class D power amplifiers, which are controlled via particularly low-noise FPGA DSP processing. Various factory-configured presets and volume settings can be called up. Remote monitoring and control is carried out via the Ethernet interface using SEEBURG Network Manager. Signal transmission (AoE) in accordance with the AES 67 standard is also possible.

PRODUCT SPECIFICATIONS

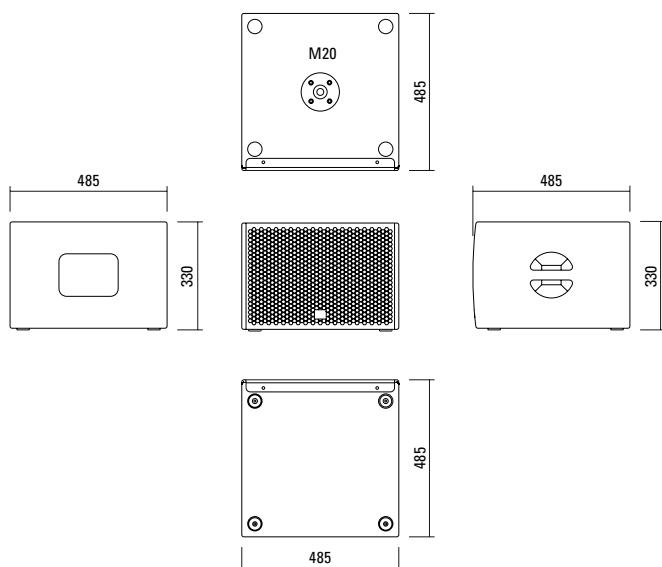
Speaker Components	12" Nd (3" VC)
Description	Digitally Powered Bass Extension
Amp Power	Ch. 1 (internal): 800 W AES @ 4 Ω Ch. 2 (external): 800 W AES @ 4 Ω
Rated Current	2,0 A @ 230 V
SPL Peak @ 1 m	131 dB
Max. Input Signal	25 dBu
DSP	DPLMx FPGA Processing 32 bit floating point
AD / DA	24 bit / 96 kHz
Latency	0.8 ms (analog in to analog out)
Usable Range - 6 dB	38 Hz - 220 Hz (- 6 dB)
Tuning Frequency excursion minimum	47 Hz
Connectors	XLR in/thru, Ethercon, Powercon in/thru 2 x Speakon NL4MP out
Handles	2 x
Rigging / Fittings	M20 on top
Weight	18 kg
Size height x width x depth	33,0 x 48,5 x 48,5 cm
Order No.	00610/dp+



Comfortable handles for easy transport.

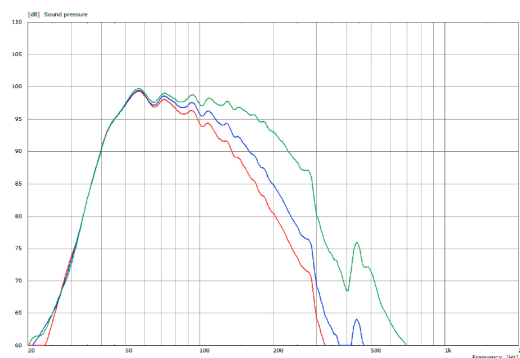


DIMENSIONS

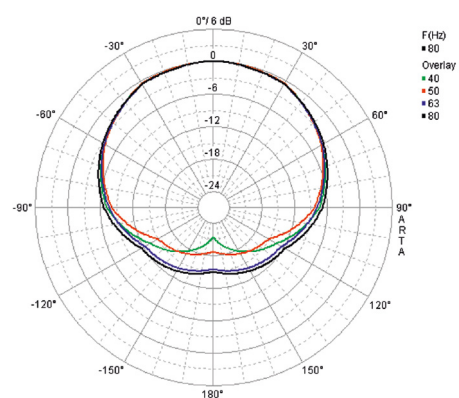


MEASUREMENTS

Frequency Response with Presets



Cardioid - Polar Diagram



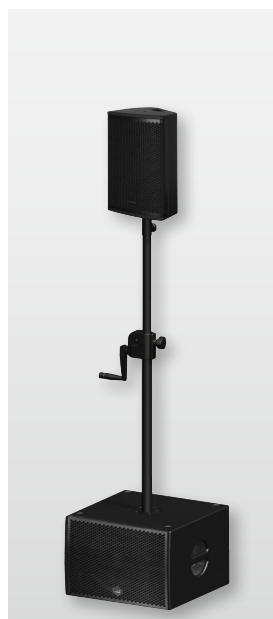
APPLICATIONS



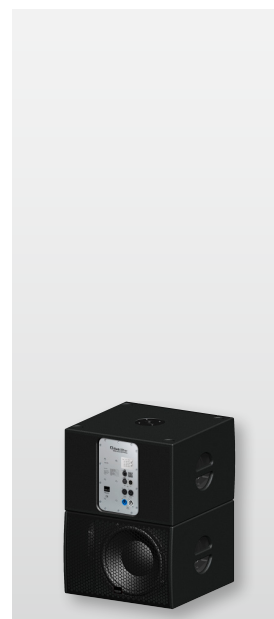
G Sub 1201 dp+ / GL 16i



G Sub 1201 dp+ / L 16j



G Sub 1201 dp+ / X 2



G Sub 1201 dp+ / G Sub 1201
Cardioid set-up

The G Sub 1201 dp+ features integrated digital amplifier electronics with a DSP controller (dp = digitally powered). Various factory-configured presets and volume settings can be called up directly on the box or via a network connection.

High-grade electronic components from the industrial sector and a first-class circuit design ensure excellent audio quality with low distortion and a minimal noise floor. Highly efficient and "intelligent" limiter systems ensure optimum protection against overload, without restricting the possibilities offered by this high-performance sound system.

 [Presets > Quick Start Manual](#)

Level

Adjustment in 3 dB steps
(-12 dB to +6 dB).

Status

Mute LED

Red light when the system is muted or under technically critical conditions.

Limit LED

Yellow light when the limiter is restricting the level.

Signal LED

Green light when the input signal exceeds -20 dBu

Power LED

Green light when the system is switched on.

Ethercon

Interface for remote control and audio transfer via ethernet (AES 67).

XLR

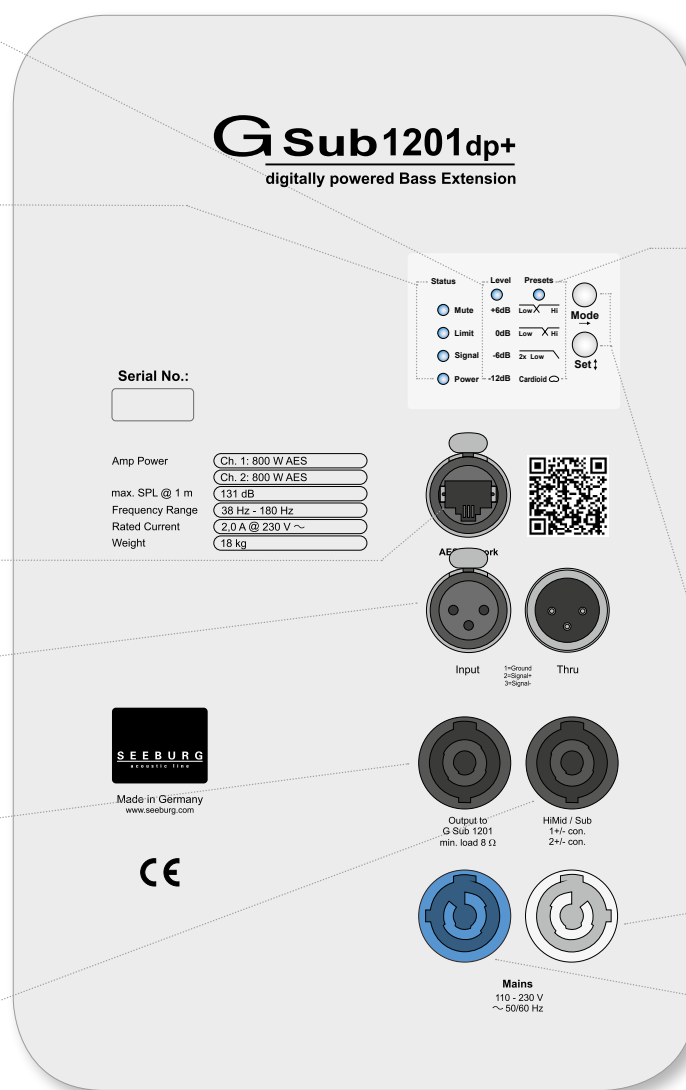
- Symmetrical analog input.
- Effective filter protection against HF interference and DC Voltages.
- Electronically balanced to prevent noise.

Speakon NL4MP

Parallel output connector for a passive G Sub 1201 with an 8 Ω impedance (2+/-). The mid-high signal from the separate output is also present here on pins 1+/- (system cabling).

Speakon NL4MP

Connector for passive tops or subs or both on the second amplifier channel. (pins 1 +/- top and 2 +/- sub).



Presets

Low/Hi

2-way active preset with a 120 Hz crossover frequency. Suitable for use with larger passive top cabinets.

Low/Hi

2-way active preset with a 160 Hz crossover frequency. Suitable for use with compact passive top cabinets.

2 x Low

Subwoofer mode without tops with a 120 Hz crossover frequency. An additional passive subwoofer can be connected to the right hand Speakon socket. Power rating: 800 Watt / 4 Ω.

Cardioid mode

For directional bass reproduction in conjunction with one or two additional G Sub 1201 or G Sub 1201 dp+ systems. This mode is applied only to the rear-facing sub. The level reduction to the rear can, depending on the actual physical setup and the frequency, be up to 20 dB.

Mode - key

Switches between control modes Status, Level and Presets.

Set - key

Setting of various values and Mute on / off.

Powercon (grey)

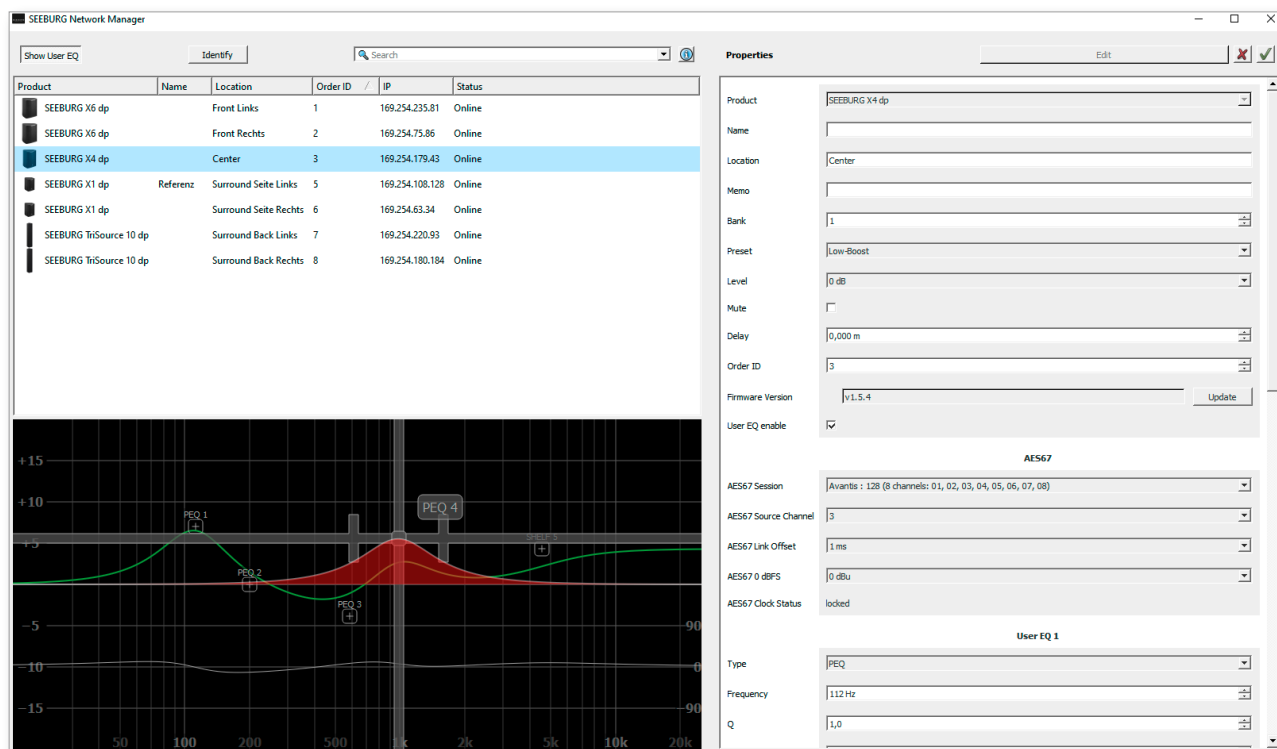
~110-230 V / 16 A max. loop through connector

Powercon (blue)

Power supply ~110-230 V / 16 A max.

SEEBURG NETWORK Manager

With the Software SEEBURG Network Manager all selfpowered systems can be controlled via network.



Features:

- > **Remote control** of functions such as recalling presets and banks, level control and mute, and locking the controls on the loudspeakers.
- > **Visual display** of all systems connected to the control network.
- > Storable names and location labels with a **global search function**.
- > **Selection of loudspeakers** in the list for simultaneous set-up and control changes.
- > **Fully parametric user EQs and delay settings** for time alignment, with a graphical user interface
- > **Time Delay** with up to **2.8 seconds runtime**.
- > **Audio-over-Ethernet (AoE) via AES 67.**
- > Connection with **media control systems** via **API**.
- > Basic **network settings**.
- > **Documentation** is available **online**.
- > **Identification function** by way of flashing LEDs on the dp loudspeaker systems.
- > **Firmware updates** can be applied.



Quick Start Guide:

www.seeburg.com > DOWNLOADS > User Manuals

AES NETWORK interface

All selfpowered systems are equipped as standard with an **AES Network interface**.

This is used for **remote control** via the **SEEBURG Network Manager** and for **Audio-over-Ethernet (AoE) audio transmission** via **AES 67**.



AES Network

ACCESSORIES G Sub 1201 dp+

Wall Mount



bar: 269 mm, max. load 40 kg,
incl. (M10 x 70 mm socket head screw,
M10 hex lock nut and flat washer)

Order No. **08130/F/269/w** (RAL 9010)
Order No. **08130/F/269**

MultiRigg™ light



version for fixed installations,
for horizontal and vertical alignment,
incl. accessories (2 x M10 x 20 socket
head screws), max. load 50 kg

Order No. **01362**

Ceiling Mount



for Subwoofer, 2 parts,
incl. screws

Order No. **08129**
Order No. **08129/w** (RAL 9010)

Speaker Pole



M20, with wind up
Order No. **03023**



M20, adjustable
Order No. **03022**

Cover



for G Sub 1201, padded
Order No. **01237**

Hybrid Cable System



PowerCon-PowerCon / XLR-XLR
2,5 m Order No. **08462**
5 m Order No. **08464**
10 m Order No. **08466**
15 m Order No. **08468**

