

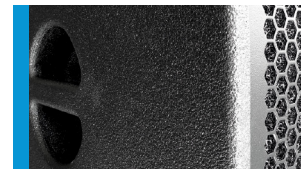
Bass Extension - digitally powered **G Sub 1201 dp++**



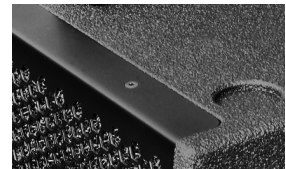
The G Sub 1201 dp++ is a 12" high-power subwoofer featuring 3-channel DSP electronics, and two signal inputs. Two supplementary integrated amplifiers are available to drive Hi-Mid or fullrange systems. The low-profile cabinet and modern design coupled with high power handling capacity make this system interesting für applications requiring particularly unobtrusive installation without compromising the precise bass reproduction. The integrated amplifier electronics are based on Class D power amplifiers, which are controlled via particularly low-noise FPGA DSP processing. Various factory-configured presets and volume settings can be called up. Remote monitoring and control is carried out via the Ethernet interface using SEEBURG Network Manager. Signal transmission (AoE) in accordance with the AES 67 standard is also possible.

PRODUCT SPECIFICATIONS

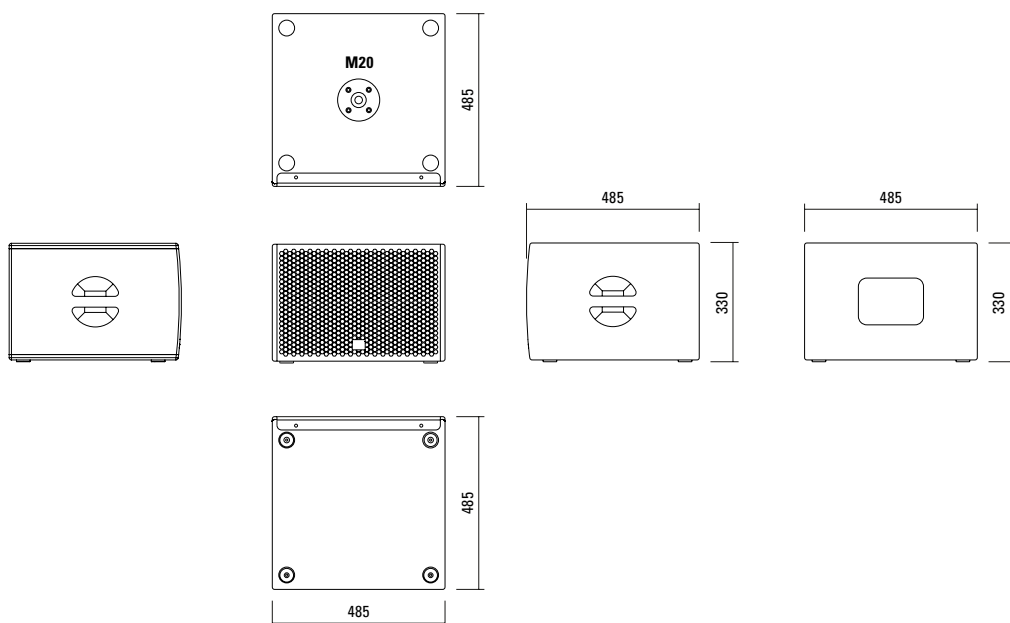
Speaker Components	12" Nd (3" VC)
Description	Digitally Powered Bass Extension
Amp Power	Ch. 1 (internal): 1000 W AES @ 4 Ω Ch. 2/3 (external): 2 x 500 W AES @ 4 Ω
Rated Current	1,6 A @ 230 V
SPL <small>Peak @ 1 m</small>	131 dB
Max. Input Signal	25 dBu
DSP	DPLMx FPGA Processing 32 bit floating point
AD / DA	24 bit / 96 kHz
Latency	0.8 ms (analog in to analog out)
Usable Range	38 Hz - 220 Hz (- 6 dB)
Tuning Frequency <small>excursion minimum</small>	47 Hz
Connectors	2 x XLR in, Ethercon, Powercon in, 2 x Speakon NL4MP out
Handles	2 x
Rigging / Fittings	M20 on top
Weight	17,5 kg
Size <small>height x width x depth</small>	33,0 x 48,5 x 48,5 cm
Order No.	00610/dp++



Comfortable handles for easy transport.



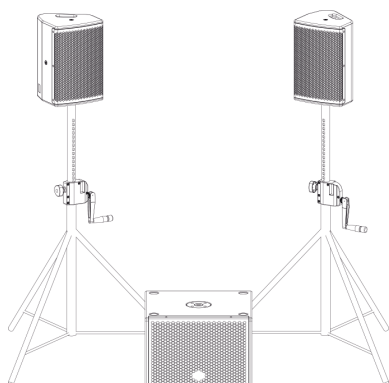
DIMENSIONS



APPLICATIONS

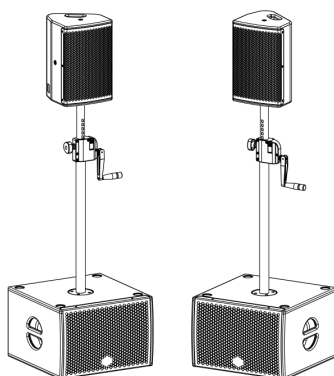
Classical satellite system.

Sound system with a G Sub 1201 dp++ and two mid-hi systems (2 x 2 Stk. / 8 Ω). Very compact transport volume, und adequate sub-woofer power for smaller events.



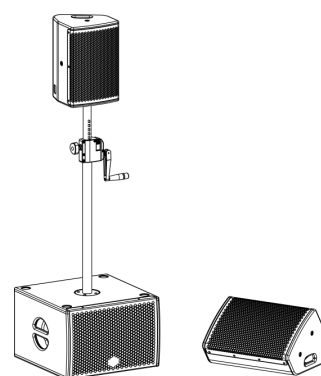
Classical satellite system with a passive G Sub 1201.

The solution for increased power and reach in the bass range. The sub-woofers can be used as mounts for speaker poles for the mid-hi systems. 2 x 2 pcs. / 8 Ω mid-hi systems can be connected.




Mono system with separate loudspeaker.

In AUX mode, the B channel can be used to drive a separate, independant loudspeaker. Possibilities include stage monitors or additional loudspeakers in the sound reinforcement system (e.g. near fills, under balcony speakers etc.) This variant also applies that an additional G Sub 1201 can be connected passively.



The G Sub 1201 dp++ features integrated digital amplifier electronics with a DSP controller (dp = digitally powered). Various factory-configured presets and volume settings can be called up directly on the box or via a network connection.

High-grade electronic components from the industrial sector and a first-class circuit design ensure excellent audio quality with low distortion and a minimal noise floor. Highly efficient and “intelligent” limiter systems ensure optimum protection against overload, without restricting the possibilities offered by this high-performance sound system.

 [Presets > Quick Start Manual](#)

Level

Adjustment in 3 dB steps (-12 dB to +6 dB).

Status

Mute LED

Red light when the system is muted or under technically critical conditions.

Limit LED

Yellow light when the limiter is restricting the level.

Signal LED

Green light when the input signal exceeds -20 dBu

Power LED

Green light when the system is switched on.

Ethercon

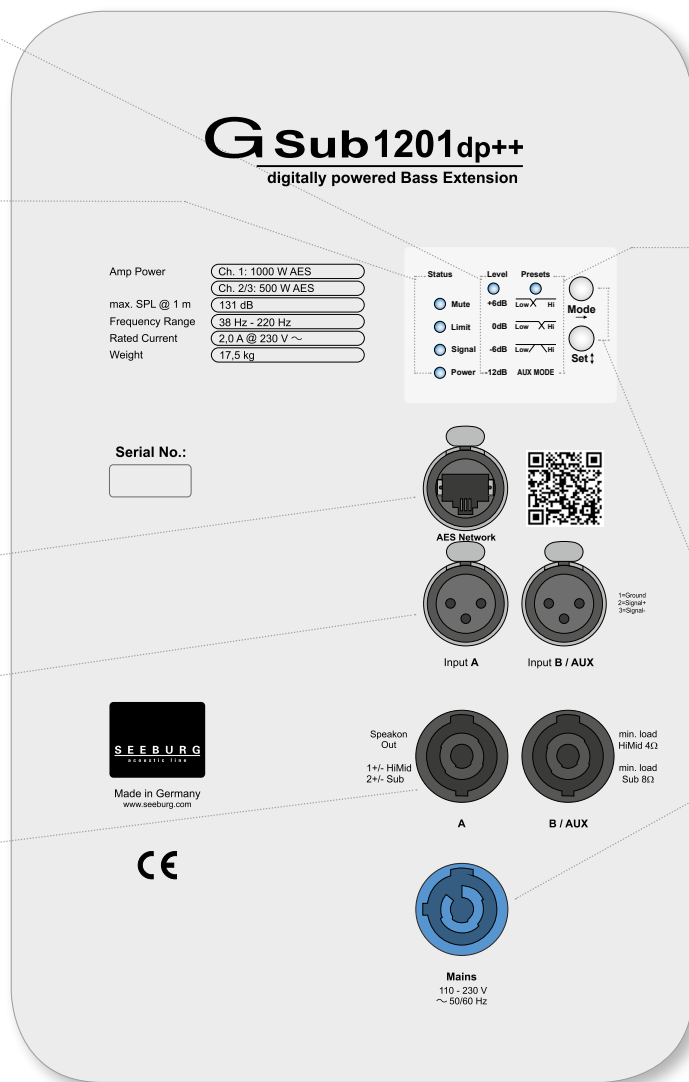
Interface for remote control and audio transfer via ethernet (AES 67).

XLR

- Symmetrical analog input.
- Effective filter protection against HF interference and DC Voltages.
- Electronically balanced to prevent noise.

2 x Speakon NL4MP

Pins 1+/- carry the hi-mid component of the A and B/AUX inputs respectively. Pins 2+/- carry the subwoofer signal, and can be used to drive a passive G-Sub 1201.



Presets

Low/Hi

2-way active preset with a 100 Hz crossover frequency. Suitable for use with larger passive top cabinets

Low/Hi

2-way active preset with a 140 Hz crossover frequency. Suitable for use with compact passive top cabinets.

Low/Hi

2-way active preset with an overlap in the cross-over frequencies. This enables a frequency response with added emphasis in the low-mid range.

AUX MODE

The signal present at the B/AUX input is passed as a full-range signal through the second amplifier channel, and appears as a loudspeaker signal on the speakon connector B/AUX.

Mode - key

Switches between control modes Status, Level and Presets.

Set - key

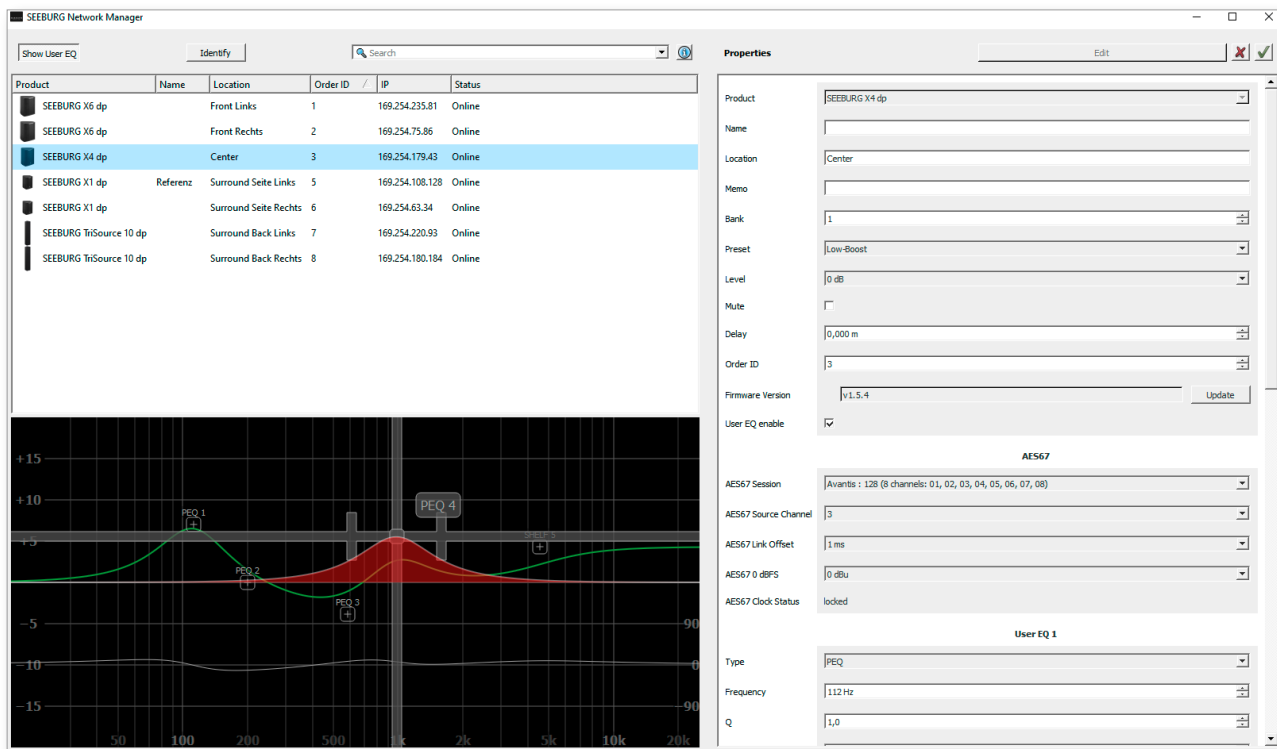
Setting of various values and Mute on / off.

Powercon (blue)

Power supply ~ 110-230 V / 16 A max.

SEEBURG NETWORK Manager

With the Software SEEBURG Network Manager all selfpowered systems can be controlled via network.



Features:

- > **Remote control** of functions such as recalling presets and banks, level control and mute, and locking the controls on the loudspeakers.
- > **Visual display** of all systems connected to the control network.
- > Storable names and location labels with a **global search function**.
- > **Selection of loudspeakers** in the list for simultaneous set-up and control changes.
- > **Fully parametric user EQs and delay settings** for time alignment, with a graphical user interface
- > **Time Delay** with up to **2.8 seconds runtime**.
- > **Audio-over-Ethernet (AoE) via AES 67**.
- > Connection with **media control systems via API**.
- > Basic **network settings**.
- > **Documentation** is available **online**.
- > **Identification function** by way of flashing LEDs on the dp loudspeaker systems.
- > **Firmware updates** can be applied.



 [SEEBURG Network Manager > Quick Start Manual \(pdf\)](#)

AES NETWORK interface

All selfpowered systems are equipped as standard with an **AES Network interface**.

This is used for **remote control** via the **SEEBURG Network Manager** and for **Audio-over-Ethernet (AoE) audio transmission via AES 67**.



AES Network

ACCESSORIES G Sub 1201 dp++

Wall Mount



bar: 269 mm, max. load 40 kg,
incl. (M10 x 70 mm socket head screw,
M10 hex lock nut and flat washer)

Order No. **08130/F/269/w** (RAL 9010)
Order No. **08130/F/269**

MultiRigg™ light



version for fixed installations,
for horizontal and vertical alignment,
incl. accessories (2 x M10 x 20 socket
head screws), max. load 50 kg

Order No. **01362**

Ceiling Mount



for Subwoofer, 2 parts,
incl. screws

Order No. **08129**
Order No. **08129/w** (RAL 9010)

Speaker Pole



M20, with wind up
Order No. **03023**



M20, adjustable
Order No. **03022**

Cover



for G Sub 1201, padded
Order No. **01237**

Hybrid Cable System



PowerCon-PowerCon / XLR-XLR
2,5 m Order No. **08462**
5 m Order No. **08464**
10 m Order No. **08466**
15 m Order No. **08468**

