

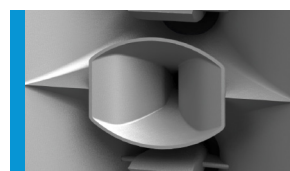


Partial grille option

The PS 1 is a high-performance system for clubs, live applications, installations in sports arenas and amusement parks. Its unique twin-coaxial mid-high section provides a very precise and even dispersion pattern of 80° x 40°. All three sources virtually merge into a single one, resulting in an excellent spatial resolution. Two 12-inch woofers extend its frequency range down to 75 Hz. The three-way design offers impressive dynamic headroom with minimal distortions and coloration. Thanks to the integrated crossover network, only two amplifier channels are required. Colors of horn flares, grilles and enclosures can be customized to suit the needs of architects and designers.

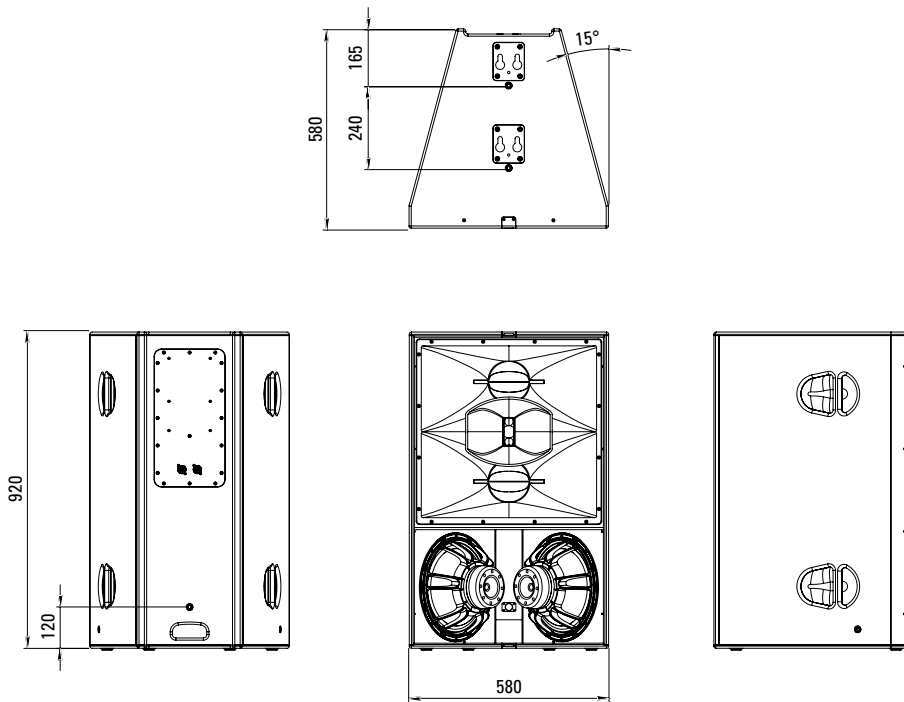
**PRODUCT SPECIFICATIONS**

<b>Speaker Components</b>	2 x 12" / 2 x 6,5" / 1,4" (3" VC)
<b>Description</b>	High Impact Point Source
<b>Power</b> AES / Peak	LF: 1500 W / 4500 W MHF: 300 W / 900 W
<b>Impedance</b> nominal	LF: 4 Ω / MHF: 16 Ω
<b>SPL</b> 1 W / Peak @ 1 m	LF: 101 dB / 138 dB MHF: 108 dB / 138 dB
<b>Usable Range</b>	75 Hz - 20 kHz (-6 dB)
<b>Tuning Frequency</b> Excursion minimum	80 Hz
<b>X - Overpoint</b> acoustical	300 Hz / 1,3 kHz
<b>Coverage</b> horizontal / vertical	80° x 40°
<b>Enclosure Wedge Angle</b>	30°
<b>Connectors</b>	2 x Speakon NL4 in/out Coding: 1 +/- MHF, 2 +/- LF
<b>Handles</b>	5 x
<b>Rigging / Fittings</b>	Cradle plates on top side, tilt bar connection on back side
<b>Weight</b>	54 kg
<b>Size</b> height x width x depth	92,0 x 58,0 x 58,0 cm
<b>Order No.</b>	<b>00780</b>



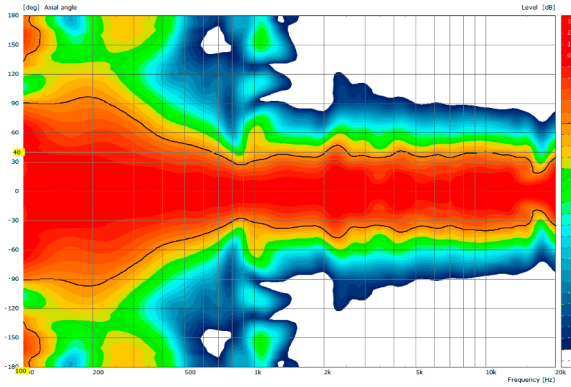
Stacking Board

## DIMENSIONS

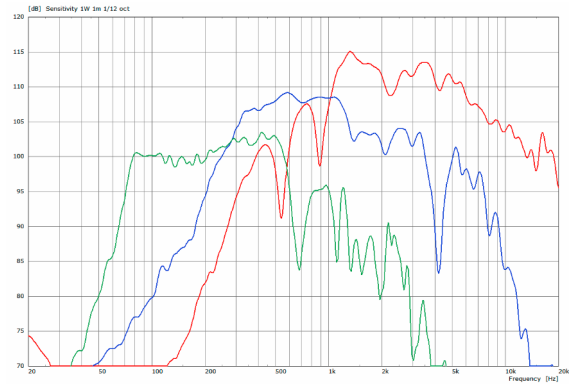


## MEASUREMENTS

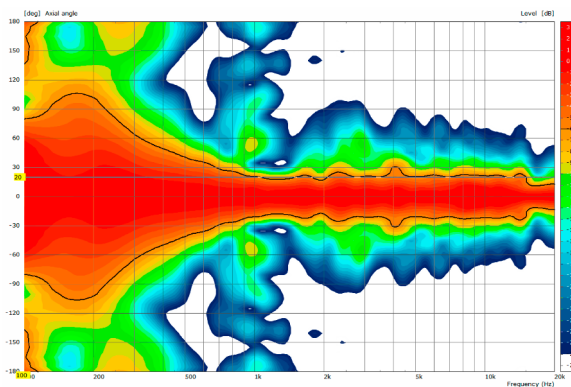
PS 1 - 2D Directivity Plot - horizontal



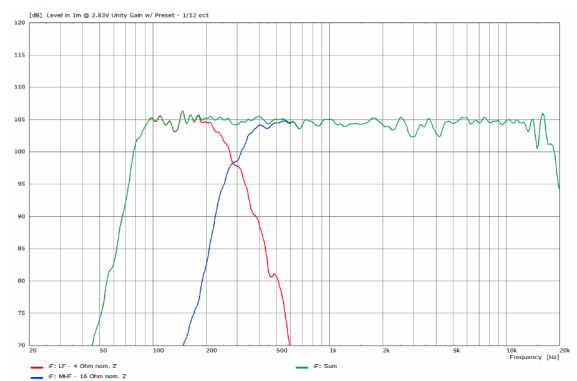
PS 1 - Sensitivity each way @ 1 W nominal input



PS 1 - 2D Directivity Plot - vertical



PS 1 - Frequency Response with 2-way preset



## CUSTOMIZATION

### PS 1 - Base Model

- Cabinet finish in black Polyurea coating
- Horn Flare finish in matt RAL 7004 signal grey



### PS 1 - Partial Grille Option

- Low-frequency section grille with wide-meshed hexagonal perforation, brushed stainless steel finish

> Optional:

- Powder coating in RAL color of choice

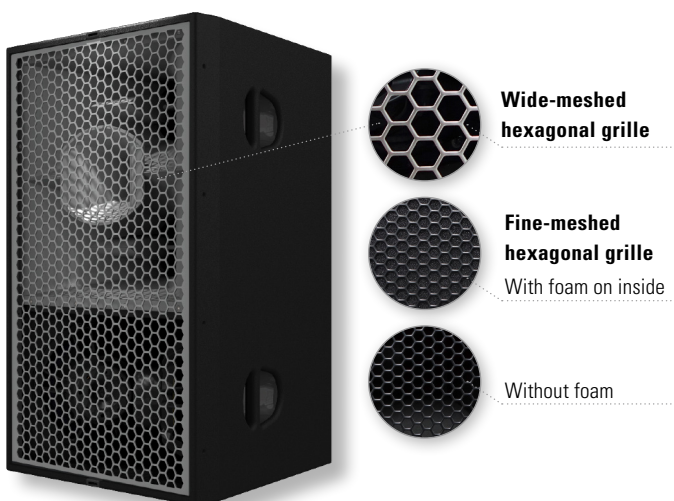


### PS 1 - Full Grille Option

- Grille with wide-meshed hexagonal perforation, brushed stainless steel finish

> Optional:

- Powder coating in RAL color of choice
- Fine-meshed perforation and black foam on inside / without foam



### PS 1 - Flare Color Option

- Complete horn flare painted in RAL color of choice

> Optional:

- Finish in matt, silk-matt, glossy, metallic, effects, etc. on request



## ACCESSORIES PS 1

### Flying Cradle



tool-free snap-in assembly,  
incl. accessories  
(1 x load adapter M10,  
1 x ball lock pin 8 x 25 mm)  
Order No. **01356**

### Stacking Board



fits: PS Sub,  
incl. accessories (1 x handle screw  
M10 x 20)  
Order No. **01395**

### Ball Lock Pin



for PS 1  
Order No. **01380/8x25** (8 x 25 mm)

### Handle Screw



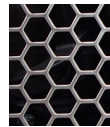
adjustable,  
M10 x 20  
Order No. **08375/20**

### Load Adapter M10

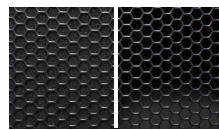


for Galeo C / Galeo C Sub / PS 1  
flying cradle  
Order No. **01328**

### Full Grille Option

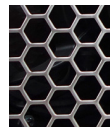


Grille with wide-meshed  
hexagonal perforation  
> brushed stainless steel finish  
Order No. **97290/stainless steel**



Grille with fine-meshed  
hexagonal perforation  
> with foam on inside  
Order No. **97290/black/foam**  
> without foam  
Order No. **97290/black**

### Partial Grille Option

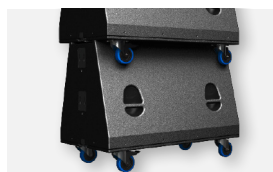


Grille with wide-meshed  
hexagonal perforation for the  
low-frequency section  
> brushed stainless steel finish  
Order No. **97295/stainless steel**

### Wheel Board



for PS 1  
Order No. **01264/PS1**



Wheel Board



Stacking Board



Flying Cradle