

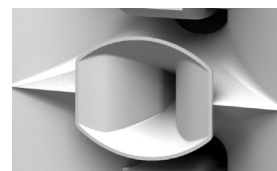


Partial grille option

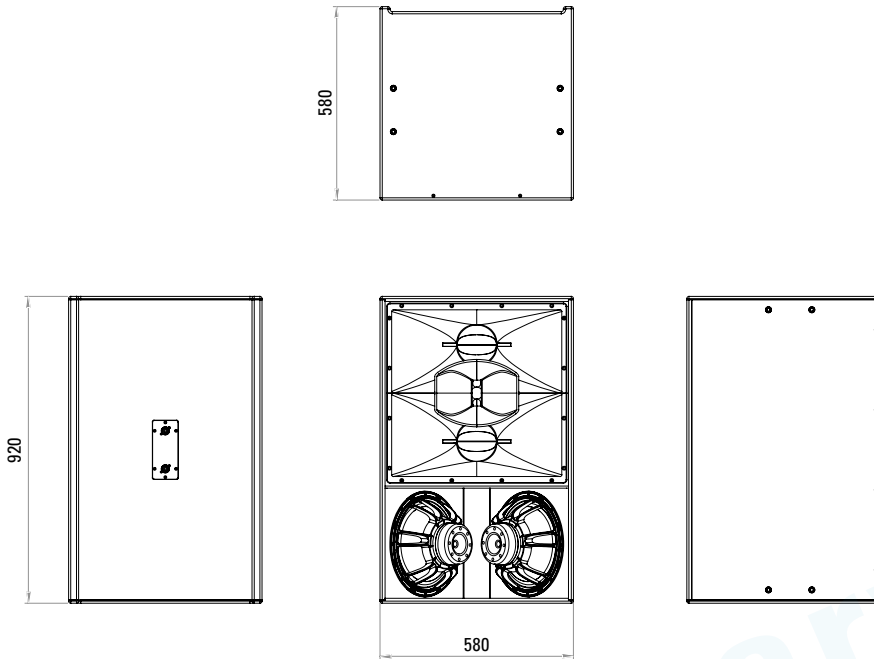
The PS 1 is a high-performance system for clubs, live applications, installations in sports arenas and amusement parks. Its unique twin-coaxial mid-high section provides a very precise and even dispersion pattern of 80° x 40°. All three sources virtually merge into a single one, resulting in an excellent spatial resolution. Two 12-inch woofers extend its frequency range down to 55 Hz. The three-way design offers impressive dynamic headroom with minimal distortions and coloration. Thanks to the integrated crossover network, only two amplifier channels are required. Colors of horn flares, grilles and enclosures can be customized to suit the needs of architects and designers. The rotatable horn flare allows for upright or horizontal installation.

PRODUCT SPECIFICATIONS

Speaker Components	2 x 12" / 2 x 6,5" / 1,4" (3" VC)
Description	High Impact Point Source
Power AES / Peak	LF: 1500 W / 4500 W MHF: 300 W / 900 W
Impedance nominal	LF: 4 Ω / MHF: 16 Ω
SPL 1 W / Peak @ 1 m	LF: 99,5 dB / 136 dB MHF: 108 dB / 138 dB
Usable Range	55 Hz - 20 kHz (-6 dB)
Tuning Frequency Excursion minimum	65 Hz
X - Overpoint acoustical	300 Hz / 1,3 kHz
Coverage horizontal / vertical	80° x 40° rotatable
Enclosure Wedge Angle	n.a.
Connectors	2 x Neutrik Speakon NL4 in/out Coding: 1 +/- MHF, 2 +/- LF
Handles	n.a.
Rigging / Fittings	16 x M10 threaded inserts 4 x on each side
Weight	60 kg
Size height x width x depth	92,0 x 58,0 x 58,0 cm
Order No.	00782

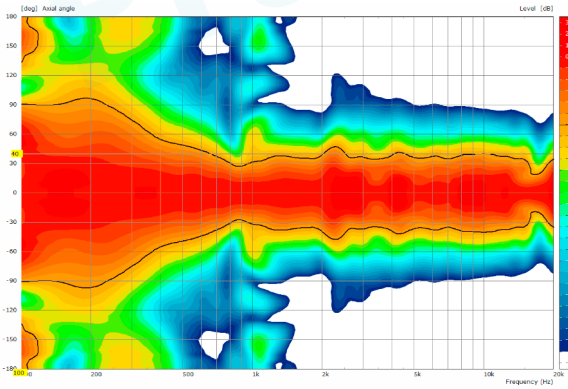


DIMENSIONS



MEASUREMENTS

PS 1F - 2D Directivity Plot - horizontal



PS 1F - 2D Directivity Plot - vertical

