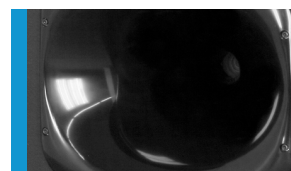




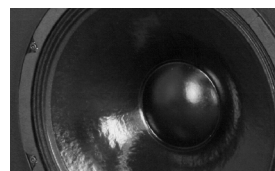
High class full range system with a precise, symmetrical dispersion and long throw. The F 8 is a 2 way active controller driven system which is fitted with 15" / 1.4" drivers. Especially suited to permanent installations in auditoriums and multi-function venues. The F 8 is also available in the xov passive version.

PRODUCT SPECIFICATIONS

	F 8 a	F 8 xov
Speaker Components	15" Nd/ 1,4" Nd	15" Nd/ 1,4" Nd
Description	Fullrange Sound System	Fullrange Sound System
Power <small>AES / Peak</small>	LF: 500 W / 1500 W HF: 80 W / 240 W	500 W / 1500 W
Impedance <small>nominal</small>	LF: 8 Ω / HF: 8 Ω	8 Ω
SPL <small>1 W / Peak @ 1 m</small>	LF: 99 dB / 129 dB HF: 110 dB / 138 dB	99 dB / 132 dB
Usable Range	50 Hz - 18 kHz (- 6 dB)	50 Hz - 18 kHz (- 6 dB)
Tuning Frequency <small>excursion minimum</small>	48 Hz	48 Hz
X-Overpoint <small>acoustical</small>	Depends on preset	850 Hz
Coverage <small>horizontal / vertical</small>	60° x 50°	60° x 50°
Max. Splay Angle	---	---
Connectors	2 x Neutrik Speakon NL4MP in/out Coding: 1 +/- HF, 2 +/- LF	2 x Neutrik Speakon NL4MP in/out Coding: 1 +/- HiMid, 2 +/- loop thru
Handles	---	---
Rigging / Fittings	3 x M10 / 4 x M8	3 x M10 / 4 x M8
Weight	25 kg	26 kg
Size <small>height x width x depth</small>	80,0 x 45,0 x 41,0 cm	80,0 x 45,0 x 41,0 cm
Order No.	00350/a	00350/xov



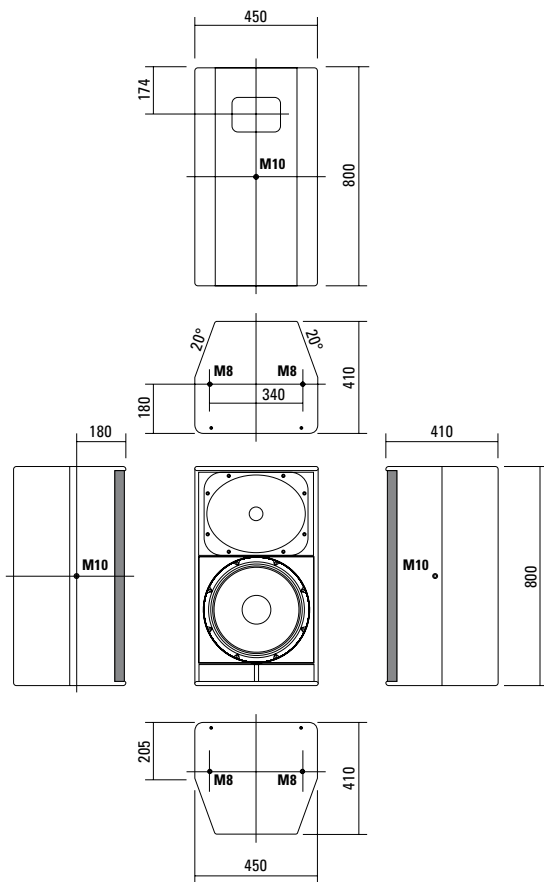
High precision 60° x 50°- Horn.



Water resistant coated diaphragm.



DIMENSIONS



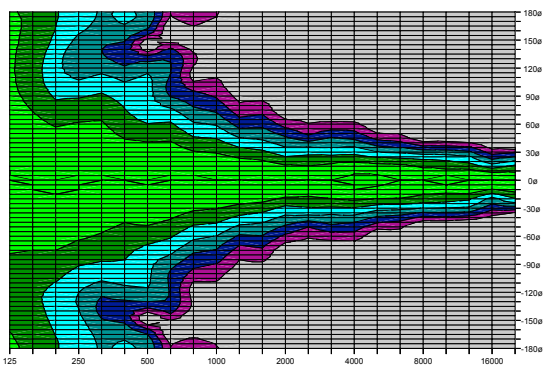
Controller Setups:



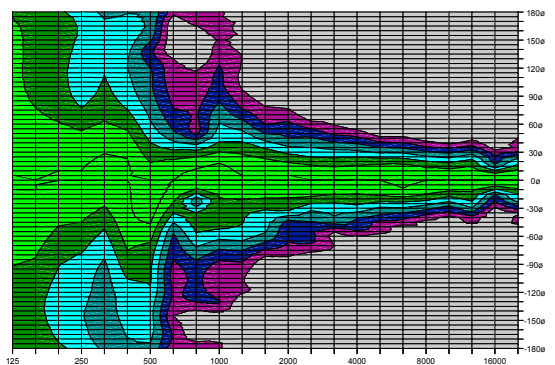
<https://www.seeburg.net/en/downloads>

COVERAGE PATTERNS

2D Directivity Plot - horizontal



2D Directivity Plot - vertical



ACCESSORIES F 8

Flying Bracket



for A 8 / TSM 15 / F 8,
incl. (black version: 2 x M10 x 30
adjustable handle screws
white version: 2 x M10 x 20
socket head screws)
Order No. **01217/set/w** (RAL 9010)
Order No. **01217/set**

Flying Bracket



for F 8,
horizontal alignment
Order No. **01217/F8/H/w** (RAL 9010)
Order No. **01217/F8/H**

Handle Screw



for flying brackets, adjustable
M10 x 30
Order No. **08375/30**

Rubber Washer



for flying brackets,
5 mm x 40 mm Ø
Order No. **01206**

Knurled Head Nut



reduction screw for fastening
M10 Pole Mount Adapter (08126)
Order No. **73755**

Pole Mount Adapter



35 mm Ø → M10 x 16 mm,
M8 x 20 star knob screw
Order No. **08126**
35 mm Ø → M10 x 16 mm
Order No. **08126/II**

Quick Trigger Clamp



max. load 100 kg
Order No. **01223/100 kg**

Ring Screw



M10–DIN 580
Order No. **73700** (zincd)
Order No. **73700/sw** (black zincd)

TV Spigot



10 mm internal thread,
28 mm Ø
Order No. **08128**

Chain Fastener



VBS 7 mm
Order No. **01378**

Steel Safety



8 mm x 600 mm, black,
max. load 40 kg (BGI 810-3),
quick connector undetachably
Order No. **01376/8**

Wall Mount



bar: 400 mm, max. load 40 kg,
incl. (M10 x 70 mm socket head screw,
M10 hex lock nut and flat washer)
Order No. **08130/F400/w** (RAL 9010)
Order No. **08130/F400**

