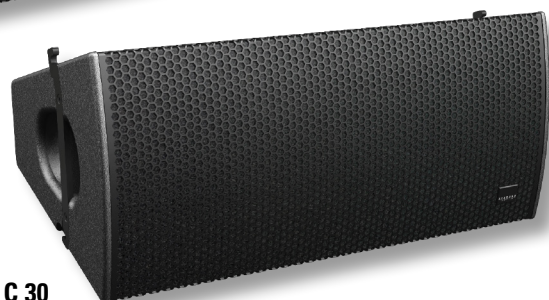


Constant Curvature Array Units **C 15 / C 30**



C 15

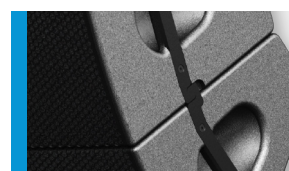


C 30

The new „Constant Curvature Array“ loudspeakers C 15 and C 30 combine the advantages of point source speakers with the performance of Line Arrays. The vertical dispersion is being defined by the addition of the single C - Series speakers. With the C 15 and C 30 there are vertical dispersion angles of 15° and 30° available. With relatively few elements, even larger audience areas can be sounded very precisely and equally. The applications are in theatres, sports arenas, club sound reinforcement and medium-sized open air concerts.

PRODUCT SPECIFICATIONS

	C 15	C 30
Speaker Components	2 x 10" Nd (3" VC) 3 x 1" Nd (1,7" VC)	2 x 10" Nd (3" VC) 3 x 1" Nd (1,7" VC)
Description	Constant Curvature Array Units	
Power <small>AES / Peak</small>	800 W / 2400 W	800 W / 2400 W
Impedance <small>nominal</small>	8 Ω	8 Ω
SPL <small>1 W / Peak @ 1m</small>	100 dB / 134 dB	100 dB / 134 dB
Usable Range <small>- 6 dB</small>	70 Hz - 20 kHz	70 Hz - 20 kHz
Tuning Frequency <small>excursion minimum</small>	80 Hz	80 Hz
X-Overpoint <small>acoustical</small>	800 Hz	800 Hz
Coverage <small>horizontal x vertical</small>	90° x 15°	90° x 30°
Max. Splay Angle	15°	30°
Connectors	2 x Speakon NL4MP in/out, Coding: 1+/- HiMid, 2+/- loop thru	2 x Speakon NL4MP in/out, Coding: 1+/- HiMid, 2+/- loop thru
Handles	2 x	2 x
Rigging / Fittings	Integrated flying hardware, 8 x M10 for MultiRigg™/ MultiTilt™	Integrated flying hardware, 8 x M10 for MultiRigg™/ MultiTilt™
Weight	25 kg	23,5 kg
Size <small>height x width x depth</small>	32,0 x 70,0 x 38,0 cm	32,0 x 70,0 x 38,2 cm
Order No.	00470	00472



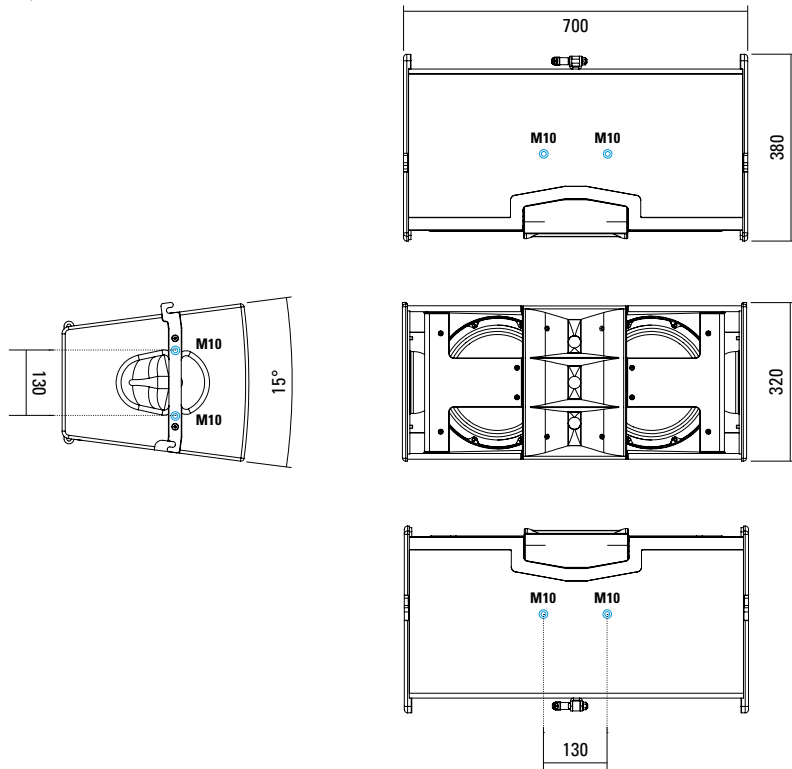
Integrated flying hardware



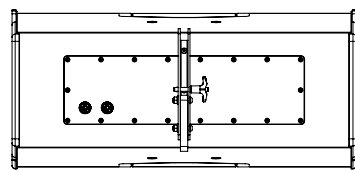
MultiRigg™ Hardware

DIMENSIONS

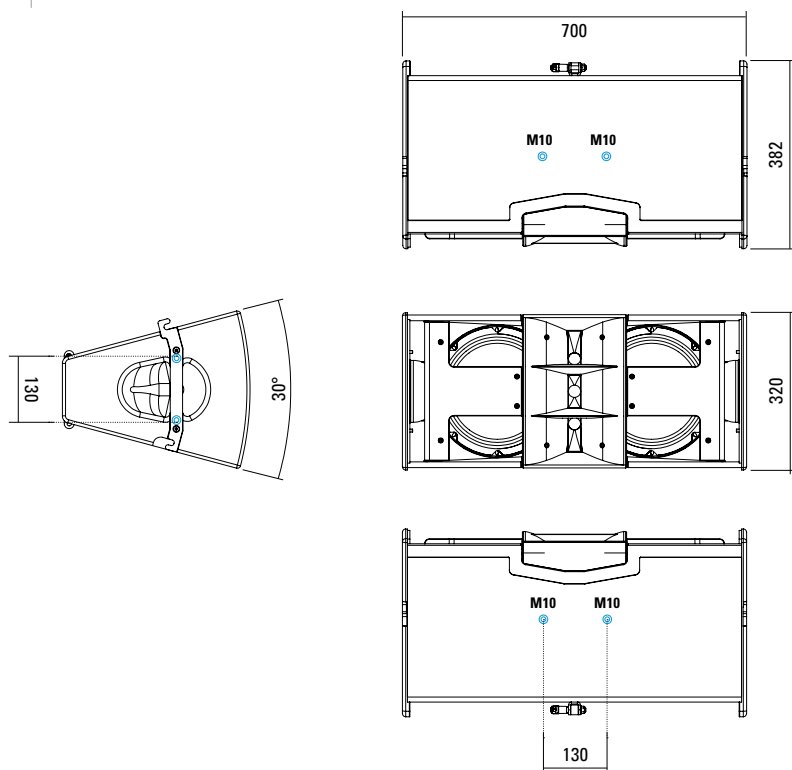
C 15



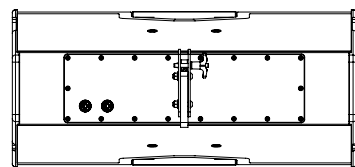
8 x M10 Twinpoints for MultiRigg™ / MultiTilt™



C 30

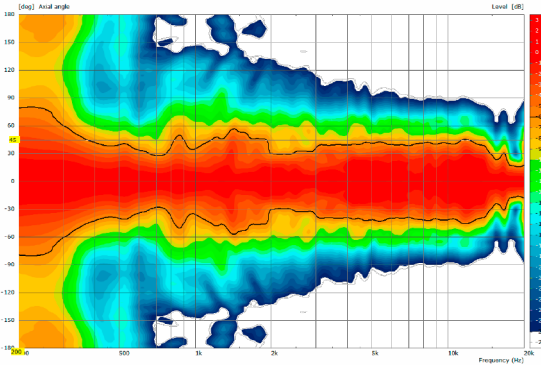


8 x M10 Twinpoints for MultiRigg™ / MultiTilt™

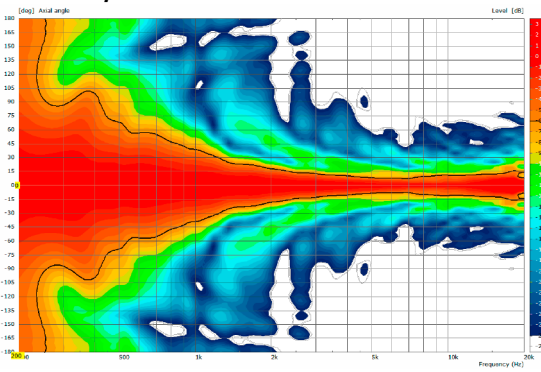


C 15

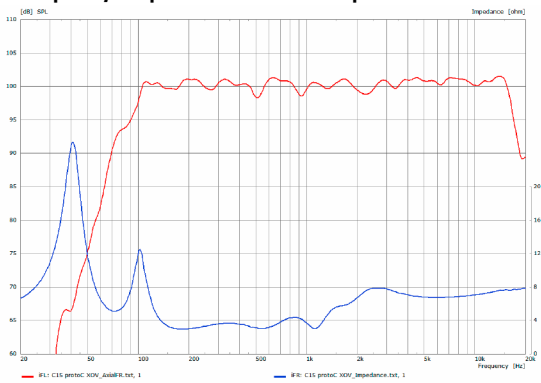
2D Directivity Plot - horizontal



Directivity Plot - vertical

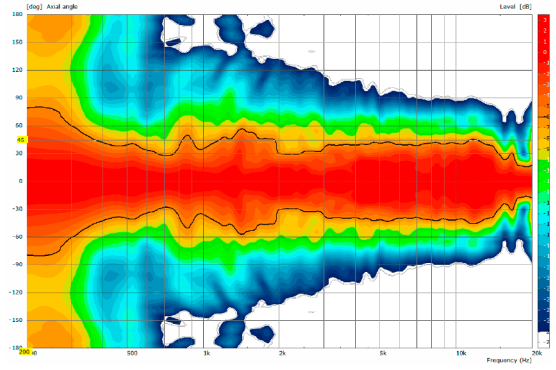


Frequency Response with Preset + Impedanz

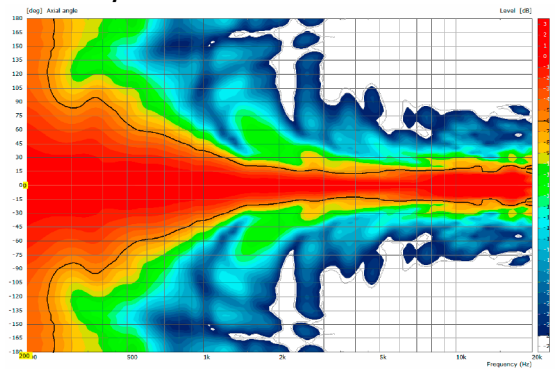


C 30

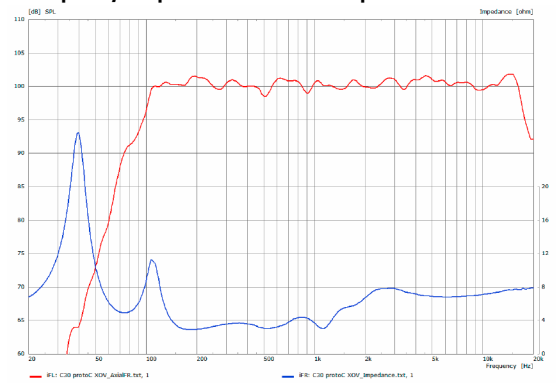
2D Directivity Plot - horizontal

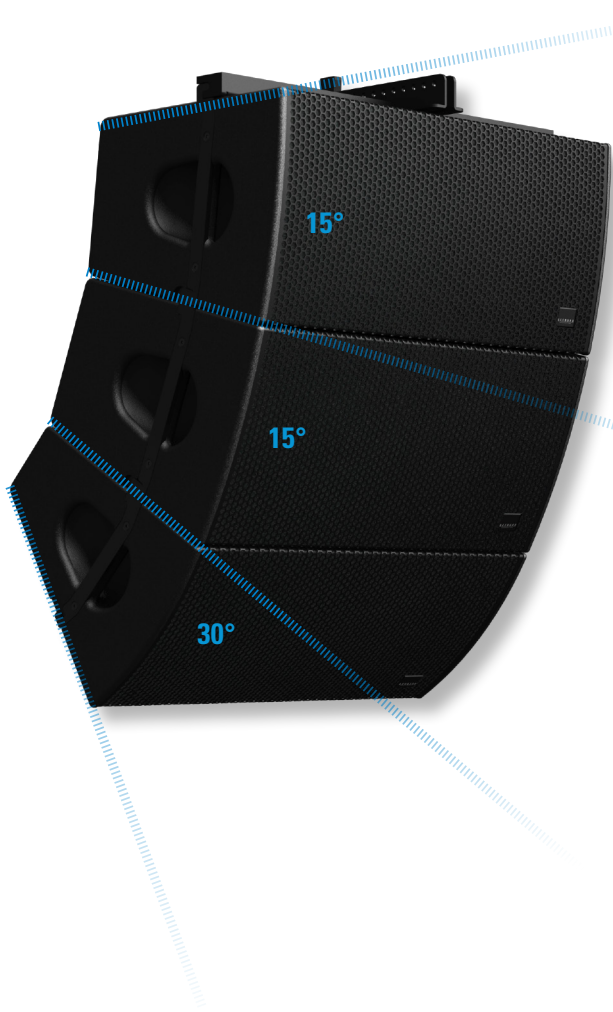


Directivity Plot - vertical



Frequency Response with Preset + Impedanz

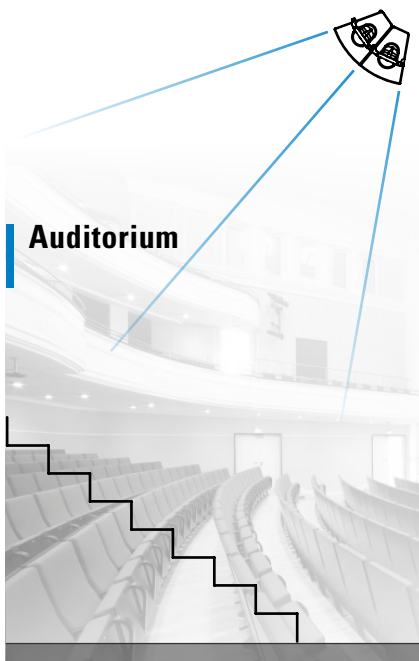




Constant Curvature

C 15 (15°) - C 30 (30°)

- Full scalability
- Highly precise dispersion
- Compact appearance
- High performance



Auditorium

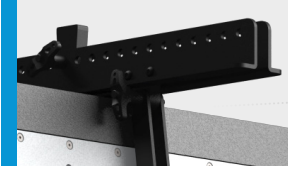


Stativ system

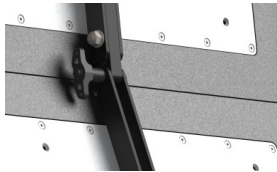


Town festival stage

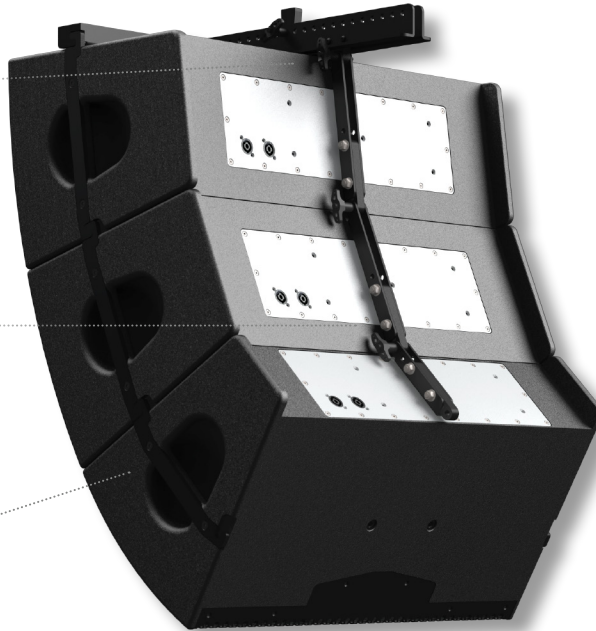
FLYING SYSTEM



Flying Cradle



Integrierte Flugmechanik



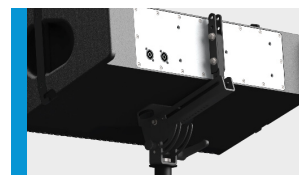
APPLICATIONS



C 30 / Galeo C Sub
MultiRigg™



C 15 + C 30 / C Sub
Flying Cradle



MultiRigg™ Hardware



MultiRigg™

swiveling fastening solution for horizontal and vertical alignment, for flown / ground stacked / mounted applications, incl. accessories (2 x knurled screws M10 x 20 mm, 1 x handle screw M8 x 55 mm), max. load 50 kg
Order No. **01360**



MultiRigg™ light

version for fixed installations, for horizontal and vertical alignment, tiltable vertical angle, incl. accessories (2 x M10 x 20 socket head screws), max. load 50 kg
Order No. **01362**



MultiTilt™

Tilt adapter with adjustable tilt from 0° to 37,5° (2,5° steps), integr. pole mount adapter with clamping device, 2 x knurled screws (M10 x 20 mm), max. load 50 kg
Order No. **01370**



Flying Cradle

for C 15 / C 30, max. load 140 kg
Order No. **01357**



Ring Screw

M10– DIN 580
Order No. **73700** (zincd)
Order No. **73700/sw** (black zincd)



TV Spigot

10 mm internal thread, 28 mm Ø
Order No. **08128**



Speaker Pole

250 mm, ø 35 mm, M20, with ring lock
Order No. **03020**



Pole Mount Adapter

35 mm ø → M10 x 16 mm, M8 x 20 star knob screw
Order No. **08126**
Order No. **08126/w** (RAL 9010)



Pole Mount Adapter

35 mm ø → M10 x 16 mm
Order No. **08126/II**
Order No. **08126/II/w** (RAL 9010)



Knurled Screw

M10 x 20 mm
Order No. **73750/w** (RAL 9010)
Order No. **73750**



Knurled Head Nut

reduction screw for fastening M10 Pole Mount Adapter (08126)
Order No. **73755**



Quick Trigger Clamp

max. load 100 kg
Order No. **01223/100 kg**



Steel Safety

8 mm x 600 mm, max. load 40 kg (BGI 810-3), quick connector undetachably
Order No. **01376/8**

ACCESSORIES C 15 / C 30

Wall Mount

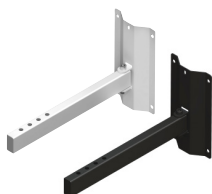


bar: 269 mm, max. load 40 kg,
incl. (M10 x 70 mm socket head screw,
M10 hex lock nut and flat washer)

Order No. **08130/F/269/w** (RAL 9010)

Order No. **08130/F/269**

Wall Mount



bar: 400 mm, max. load 40 kg,
incl. (M10 x 70 mm socket head screw,
M10 hex lock nut and flat washer)

Order No. **08130/F400/w** (RAL 9010)

Order No. **08130/F400**

Flight Case



for 2 pcs. C 15 or C 30,
mounting option for 2 x MultiRigg
or MultiTilt, 100 mm wheels.

Size: 80 x 45,5 x 90 cm (w x d x h),
weight: 34 kg

Order No. **16600**

