



Multifunctional 15" / 1" cabinet with a very broad frequency range and well balanced sound characteristics. With performance similar to the A 6, but with extended bass response, the A 8 is a universal full range audio tool. A variety of M8 and M10 mounting points provide for easy mounting of the accessory hardware and installation. The system is also available in the AF 8 version optimised for permanent installation.

PRODUCT SPECIFICATIONS

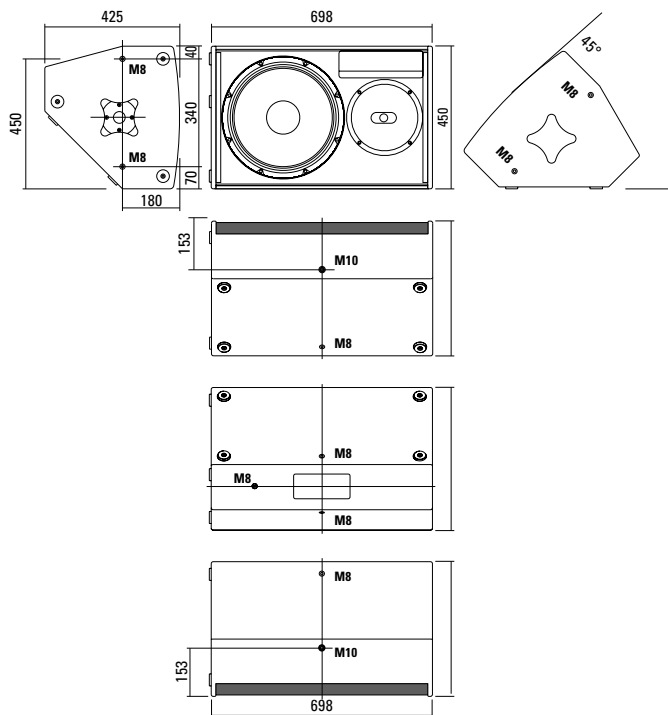
| | |
|---|--|
| Speaker Components | 15" Nd / 1" |
| Description | Multi Purpose Sound System |
| Power AES / Peak | 500 W / 1500 W |
| Impedance nominal | 8 Ω |
| SPL 1 W / Peak @ 1 m | 99 dB / 131 dB |
| Usable Range | 50 Hz - 20 kHz (-10 dB) |
| Tuning Frequency Excursion minimum | 50 Hz |
| X - Overpoint acoustical | 1,3 kHz |
| Coverage horizontal / vertical | 90° x 60° - rotatable |
| Connectors | 2 x Speakon NL4MP in/out Coding: 1 +/- HiMid, 2 +/- loop thru |
| Handles | 2 x |
| Rigging / Fittings | 2 x M10 / 7 x M8 35 mm pole mount |
| Weight | 23,5 kg |
| Size height x width x depth | 69,8 x 45,0 x 42,5 cm |
| Order No. | 00270/II 00270/AF/II (installation version) |



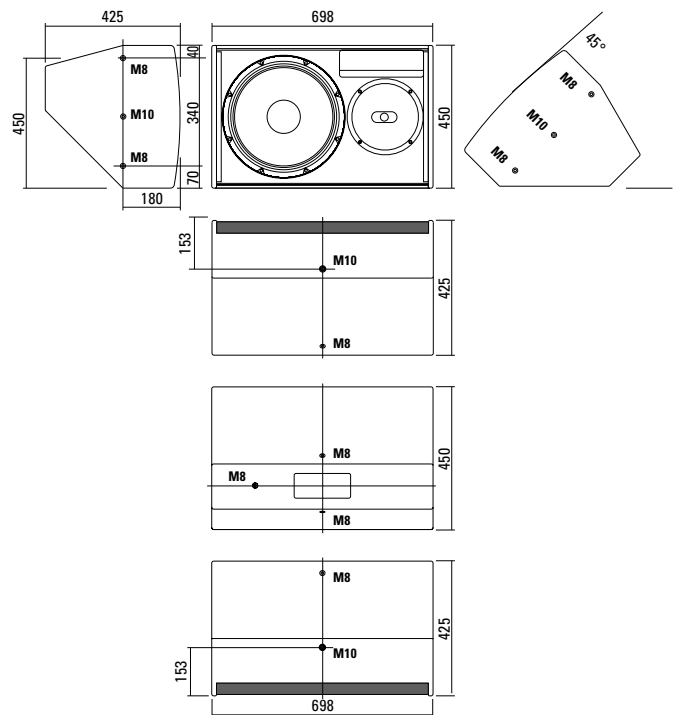
The 35 mm threaded stand socket is integrated in the carrying handle.



DIMENSIONS



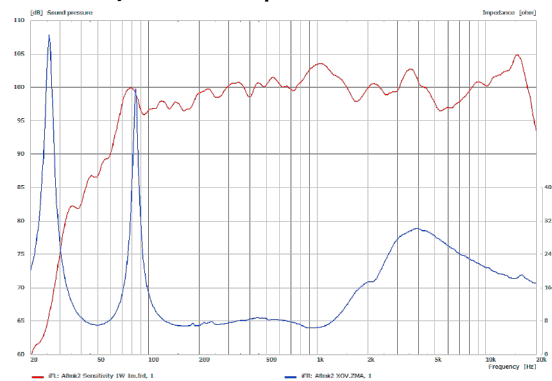
Installation Version AF 8



Controller Setups:

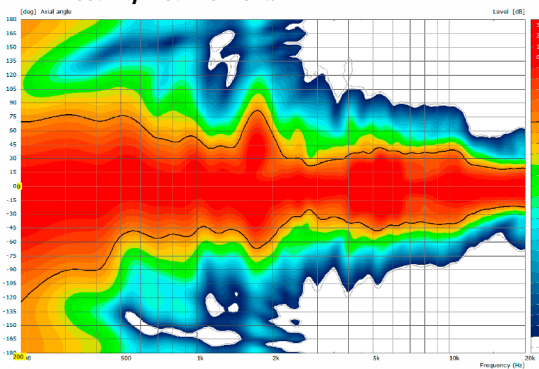
<https://www.seeburg.com/en/downloads>

Sensitivity 1 W @ 1 m + Impedance

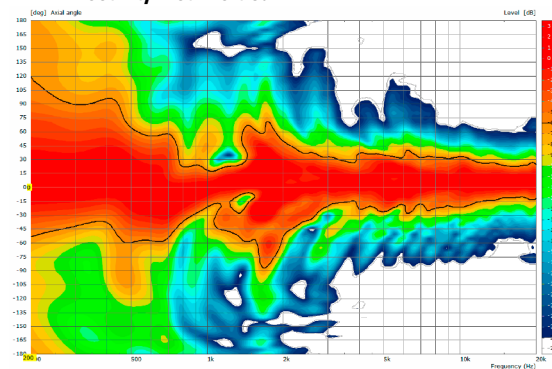


COVERAGE PATTERNS

2D Directivity Plot - horizontal



2D Directivity Plot - vertical

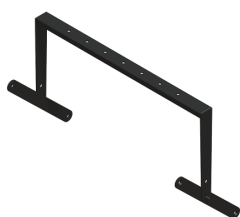


Flying Bracket



for A 8 /TSM 15 / F 8,
incl. (black version: 2 x M10 x 20
adjustable handle screws
white version: 2 x M10 x 20
socket head screws)
Order No. **01217/set/w** (RAL 9010)
Order No. **01217/set**

Flying Bracket



for A 8
horizontal alignment,
incl. accessories
Order No. **01217/H/set/w** (RAL 9010)
Order No. **01217/H/set**

Handle Screw



for flying brackets,
adjustable
M10 x 20
Order No. **08375/20**

Rubber Washer



for flying brackets,
5 mm x 40 mm Ø
Order No. **01206**

Knurled Head Nut



reduction screw for fastening
M10 Pole Mount Adapter (08126)
Order No. **73755**

Pole Mount Adapter



35 mm Ø → M10 x 16 mm,
M8 x 20 star knob screw
Order No. **08126**
35 mm Ø → M10 x 16 mm
Order No. **08126/II**

Steel Safety



6 mm x 600 mm,
max. load 22 kg (BGI 810-3),
quick connector undetachably
Order No. **01376/6**

Quick Trigger Clamp



max. load 100 kg
Order No. **01223/100 kg**

Ring Screw



M10– DIN 580
Order No. **73700** (zincplated)
Order No. **73700/sw** (black zincplated)

TV Spigot



10 mm internal thread,
28 mm Ø
Order No. **08128**

Chain Fastener



VBS 7 mm
Order No. **01378**

ACCESSORIES A 8

Wall Mount



bar: 269 mm, max. load 40 kg,
incl. (M10 x 70 mm socket head screw,
M10 hex lock nut and flat washer)

Order No. **08130/F/269/w** (RAL 9010)
Order No. **08130/F/269**

Wall Mount



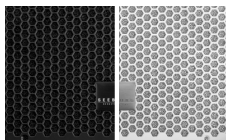
with tilt unit, max. load 40 kg
Order No. **08130**

Speaker Stand



K&M, incl. wind up,
height 138,5 to 218 cm,
max. load 50 kg,
Order No. **03011**

Honeycomb Grilles

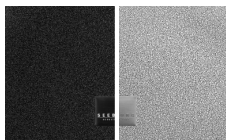


for A 8 front replacement.

Foam behind grille

Order No. **97012/hex/compl**

Order No. **97012/hex/compl/w**
(RAL 9010)



Foam in front of grille

Order No. **97012/compl**

Order No. **97012/compl/w**
(RAL 9010)

Cover



for A 8 / TSM 15,
padded

Order No. **01240**

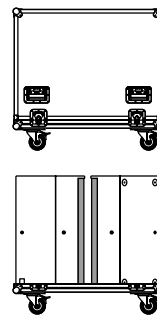
Rain Cover



for A 8 / TSM 15

Order No. **01240/outdoor**

Flight Case



for 2 pcs. TSM 15 / A 8 / A 8 Sub,
heavy duty, 9,0 mm birch multiplex,
PVC coated, 6 x recessed sprung hand-
les, 4 x butterfly catches, 4 x 100 mm
blue wheels, 2 pcs. with brake, interior
lined with felt.

Order No. **16012/pro**

