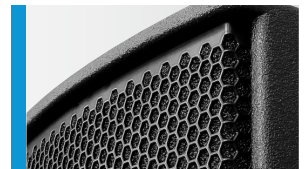




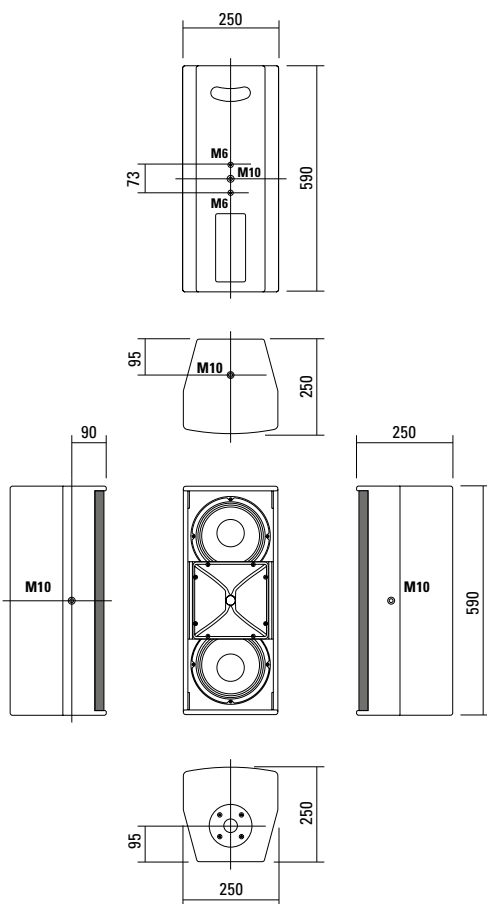
High output universal HiMid system fitted with a classic 2 x 8" Nd / 1" driver combination. Equally suited as a strong top in combination with a subwoofer or as a stand alone system for speech reproduction over short to medium distances. Four M10 mounting points, and a fifth as an optional alternative to the speaker stand socket, in combination with the comprehensive accessory range, allow simple vertical or horizontal mounting.

## PRODUCT SPECIFICATIONS

|   |   |
|---|---|
| <b>Speaker Components</b>                 | 2 x 8" Nd / 1"  |
| <b>Description</b>                        | HiMid Sound System  |
| <b>Power</b> AES / Peak                   | 500 W / 1500 W  |
| <b>Impedance</b> nominal                  | 4 $\Omega$ (16 $\Omega$ optional)                                   |
| <b>SPL</b> 1 W / Peak @ 1 m               | 100 dB / 132 dB   |
| <b>Usable Range</b>                       | 80 Hz - 20 kHz (-6 dB)  |
| <b>Tuning Frequency</b> excursion minimum | 90 Hz   |
| <b>X - Overpoint</b> acoustical           | 1,4 kHz   |
| <b>Coverage</b> horizontal / vertical     | 90° x 60° rotatable   |
| <b>Connectors</b>                         | 2 x Speakon NL4MP in/out<br>Coding: 1 +/- HiMid, 2 +/- loop through |
| <b>Handles</b>                            | 1 x   |
| <b>Rigging / Fittings</b>                 | 4 x M10, 2 x M6<br>35 mm pole mount                                 |
| <b>Weight</b>                             | 12,5 kg   |
| <b>Size</b> height x width x depth        | 59,0 x 25,0 x 25,0 cm   |
| <b>Order No.</b>                          | <b>00240/ II</b>  |



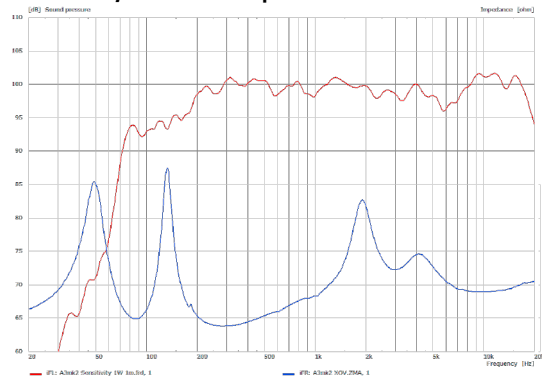
## DIMENSIONS



### Controller Setups:

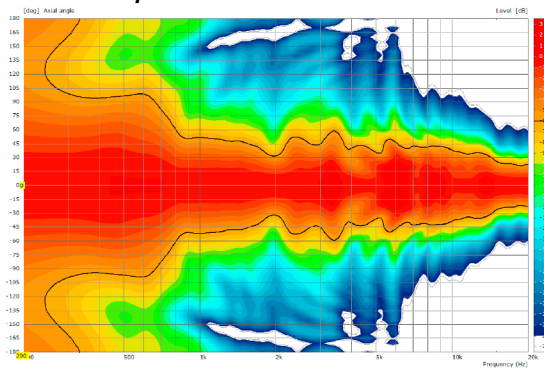
<https://www.seeburg.com/en/downloads>

### Sensitivity 1 W @ 1 m + Impedance

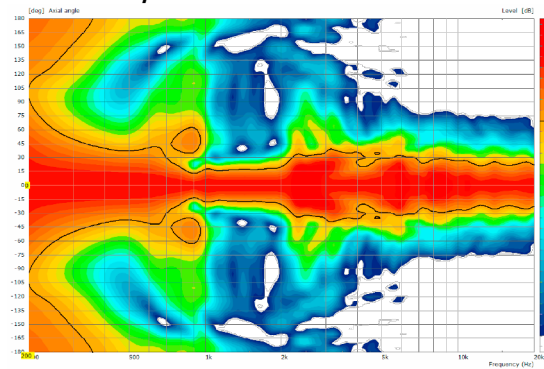


## COVERAGE PATTERNS

### 2D Directivity Plot - horizontal



### 2D Directivity Plot - vertical



### Flying Bracket



for A 3  
horizontal alignment,  
incl. (2 x M10 x 20 socket head  
screws, 2 x rubber washers,  
1 x plate)

Order No. **01215/H/set/w** (RAL 9010)  
Order No. **01215/H/set**

### Flying Bracket



for A 3  
incl. (black version: 2 x M10 x 20  
handle screws, 2 x rubber washers  
white version: 2 x M10 x 20 socket  
head screws, 2 x rubber washers)

Order No. **01215/set/w** (RAL 9010)  
Order No. **01215/set**

### Handle Screw



for flying brackets, adjustable

Order No. **08375/20** (M10 x 20)

### Rubber Washer



for flying brackets,  
5 mm x 40 mm Ø

Order No. **01206**

### Plate



for A 2 / A 3 flying brackets,  
horizontal alignment,  
replacement for pole mount flange,  
110 mm Ø flange with M10 nut

Order No. **08119/M10/w** (RAL 9010)  
Order No. **08119/M10**

### Knurled Head Nut



reduction screw for fastening  
M10 Pole Mount Adapter (08126)

Order No. **73755**

### Pole Mount Adapter



35 mm Ø -> M10 x 16 mm,  
M8 x 20 star knob screw

Order No. **08126**

35 mm Ø -> M10 x 16 mm

Order No. **08126/II**

### Flange



with ball and socket joint,  
with additional locking screw,  
M10 x 15, max. load 15 kg

Order No. **08125**

### Quick Trigger Clamp



max. load 100 kg

Order No. **01223/100 kg**

### Quick Trigger Clamp - small



M10, max. load 20 kg

Order No. **01223/20 kg**

### Truss Clamp



incl. M10 Adapter,  
max. load 15 kg

Order No. **01221**

### Steel Safety



6 mm x 600 mm, black,  
max. load 22 kg (BGI 810-3),  
quick connector undetachably

Order No. **01376/6**

### Ring Screw



M10 - DIN 580

Order No. **73700** (zincd)

Order No. **73700/sw** (black zincd)

### TV Spigot



10 mm internal thread,  
28 mm Ø

Order No. **08128**



## ACCESSORIES A 3

### Wall Mount



bar: 269 mm, max. load 40 kg,  
incl. (M10 x 70 mm socket head screw,  
M10 hex lock nut and flat washer)

Order No. **08130/F/269/w** (RAL 9010)  
Order No. **08130/F/269**

### Wall Mount



2 x M6 fixing holes (d=73 mm),  
1 x M10 fixing hole (center),  
max. load 25 kg

Order No. **03034/w** (RAL 9010)  
Order No. **03034**

### Wall Mount



ball and socket joint flange (08125)  
+ 08125/plate

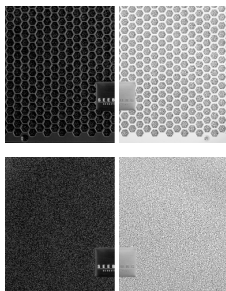
Order No. **08125/set**

### Spacer



for Wall Mount (03034)  
polyurea coated  
Order No. **03034/spc**

### Honeycomb Grilles



for A 3 front replacement.

Foam behind grille  
Order No. **97006/hex/compl**  
Order No. **97006/hex/compl/w**  
(RAL 9010)

Foam in front of grille  
Order No. **97006/compl.**  
Order No. **97006/compl/w**  
(RAL 9010)

### Speaker Stand



incl. wind up,  
height 138,5 to 218 cm,  
max. load 50 kg,

Order No. **03011**

K&M, height 137,5 to 218,5 cm,  
max. load 50 kg,

Order No. **03010**

### Cover



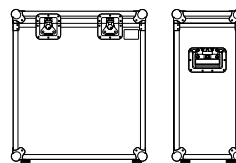
for A 3, padded  
Order No. **01258**

### Rain Cover



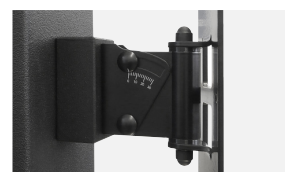
for A 3  
Order No. **01258/outdoor**

### Flight Case Trunk



for 2 pcs. A 3 and accessories,  
standard, 7 mm birch multiplex,  
PVC coated, hinged lid, 2 x recessed  
sprung handles, 2 x butterfly catches,  
4 x 100 mm blue wheels, 2 pcs. with  
brake, rubber feet, partition walls,  
interior lined with felt.

Order No. **16066**



Spacer -> Wall Mount