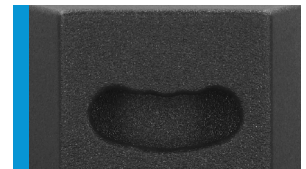




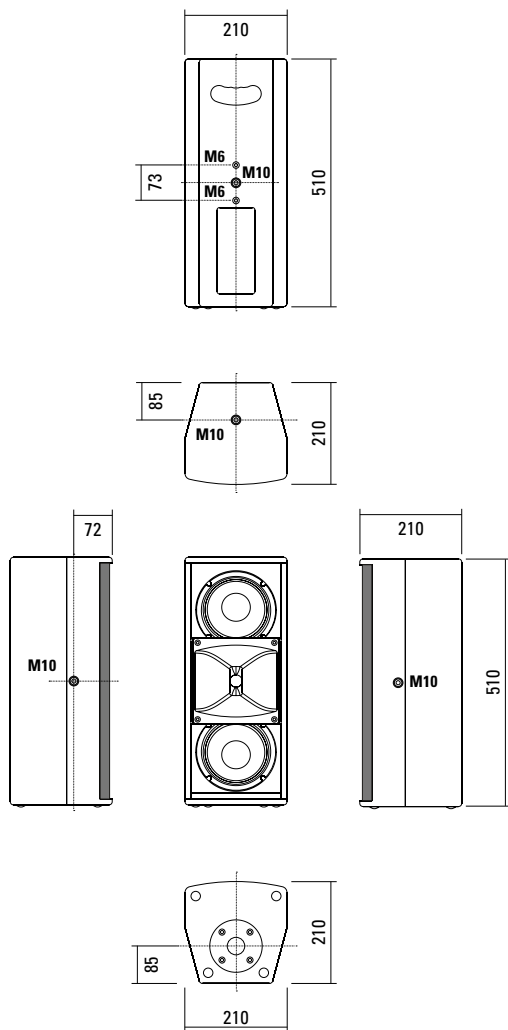
An unobtrusively elegant and yet powerful system for installations and corporate presentations. The revised 2 x 6.5" / 1" configuration with larger horn provides improved coverage and speech intelligibility and longer throw. Four M10 mounting points, combined with our range of mounting accessories, allow fast and simple horizontal or vertical installation. The option is available for a fifth M10 mounting point in place of the standard loudspeaker stand socket. The integrated amplifier electronics deliver 500/ 150 watts (AES) and are based on Class D power amplifiers, which are controlled via particularly low-noise FPGA DSP processing. Various factory-configured presets and volume settings can be called up. Remote monitoring and control is carried out via the Ethernet interface using SEEBURG Network Manager. Signal transmission (AoE) in accordance with the AES 67 standard is also possible.

PRODUCT SPECIFICATIONS

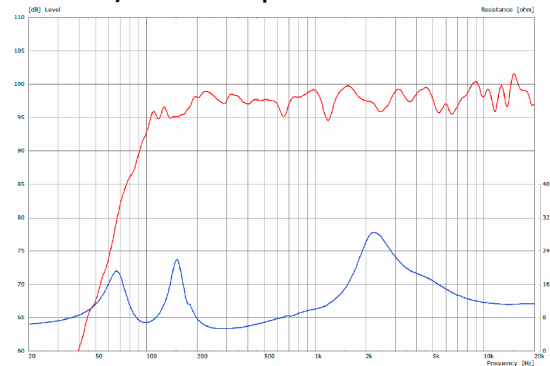
Speaker Components	2 x 6,5" Nd (2" VC) / 1" (1,7" VC)
Description	HiMid Sound System
Amp Power	LF: 500 W AES / 110-230 V HF: 150 W AES / 110-230 V
Rated Current	0,5 A @ 230 V
SPL <small>Peak @ 1 m</small>	128 dB
Max. Input Signal	25 dBu
DSP	DPLMx FPGA Processing 32 bit floating point
AD / DA	24 bit / 96 kHz
Latency	0,8 ms (analog in to analog out)
Usable Range	80 Hz - 19 kHz (-6 dB)
Tuning Frequency <small>excursion minimum</small>	95 Hz
X - Overpoint <small>acoustical</small>	Depends on preset
Coverage <small>horizontal / vertical</small>	90° x 60° - rotatable
Connectors	XLR in/thru, Ethercon, Powercon in/out
Handles	1 x
Rigging / Fittings	4 x M10, 2 x M6 35 mm pole mount
Weight	10,5 kg
Size <small>height x width x depth</small>	51,0 x 21,0 x 21,0 cm
Order No.	00230/dp



DIMENSIONS

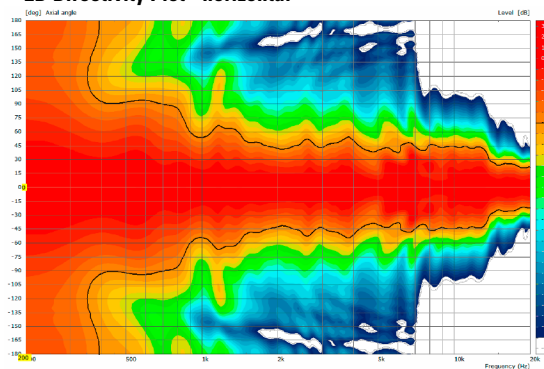


Sensitivity 1 W @ 1 m + Impedance

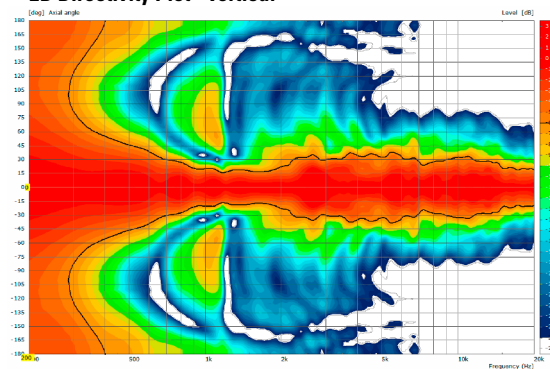


COVERAGE PATTERNS

2D Directivity Plot - horizontal



2D Directivity Plot - vertical



The A 2 dp features integrated digital amplifier electronics with a DSP controller (dp = digitally powered). Various factory-configured presets and volume settings can be called up directly on the box or via a network connection.

High-grade electronic components from the industrial sector and a first-class circuit design ensure excellent audio quality with low distortion and a minimal noise floor. Highly efficient and "intelligent" limiter systems ensure optimum protection against overload, without restricting the possibilities offered by this high-performance sound system.

 [Presets > Quick Start Manual](#)

Level

Adjustment in 3 dB steps
(-12 dB to +6 dB).

Status

Mute LED

Red light when the system is muted or under technically critical conditions.

Limit LED

Yellow light when the limiter is restricting the level.

Signal LED

Green light when the input signal exceeds -20 dBu

Power LED

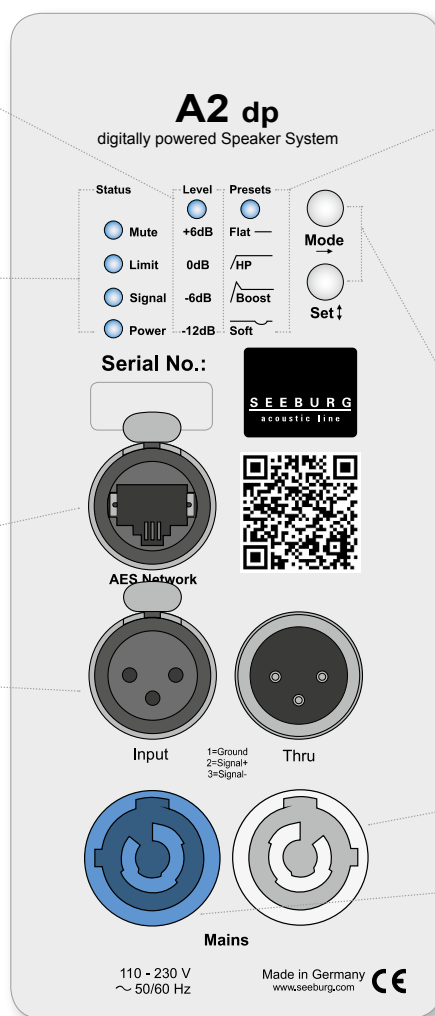
Green light when the system is switched on.

Ethercon

Interface for remote control and audio transfer via ethernet (AES 67).

XLR

- Symmetrical analog input.
- Effective filter protection against HF interference and DC Voltages.
- Electronically balanced to prevent noise.



Presets

Flat

This setting provides a linear frequency response with a neutral sound characteristics. Standard setting for many applications.

HP

Switches in a high pass filter for use in combination with a subwoofer.

Boost

The same neutral response as the „Flat“ setting, but with the addition of a bass boost.

Soft

Reduces the level in the frequency range from 2.5 - 5 kHz, to which the ear is particularly sensitive. This setting is recommended for high level reproduction of highly compressed music tracks.

Mode - key

Switches between control modes Status, Level and Presets.

Set - key

Setting of various values and Mute on / off.

Powercon (grey)

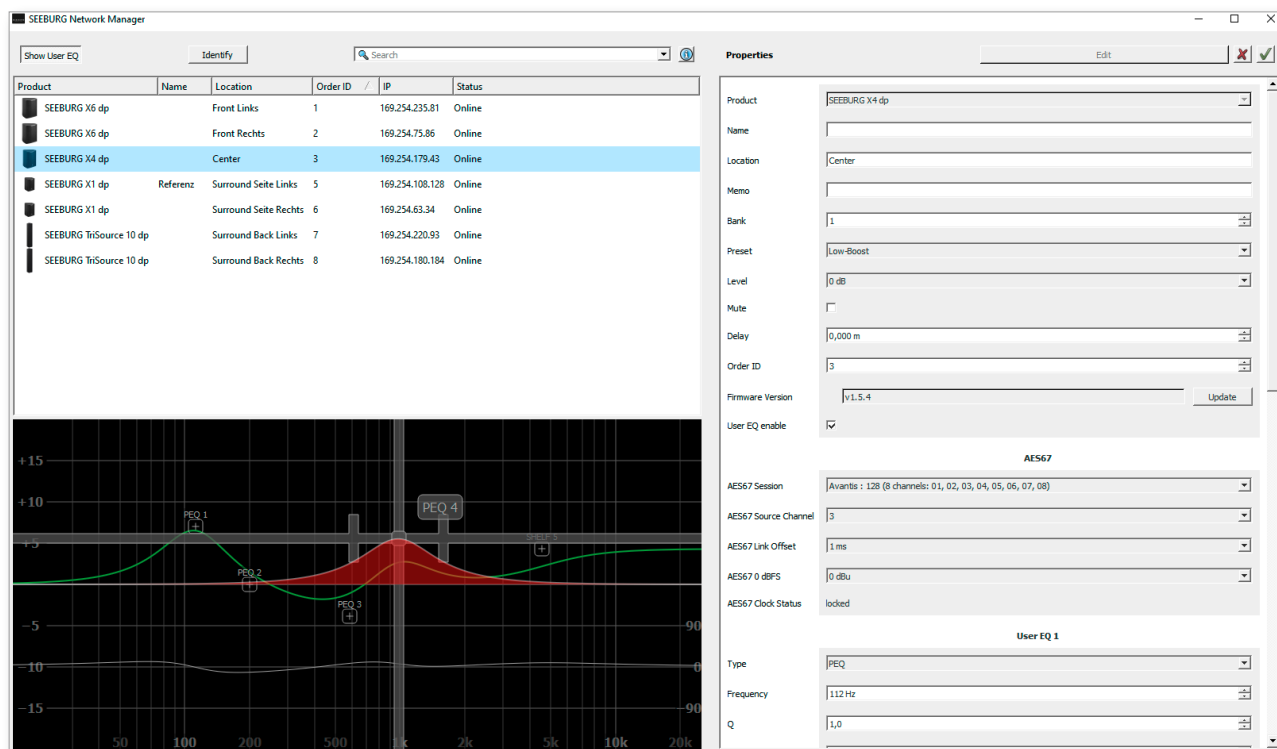
~ 110-230 V / 16 A max.
loop through connector

Powercon (blue)

Power supply
~ 110-230 V / 16 A max.

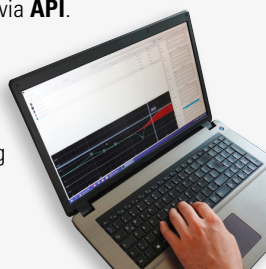
SEEBURG NETWORK Manager

With the Software SEEBURG Network Manager all selfpowered systems can be controlled via network.



Features:

- > **Remote control** of functions such as recalling presets and banks, level control and mute, and locking the controls on the loudspeakers.
- > **Visual display** of all systems connected to the control network.
- > Storable names and location labels with a **global search function**.
- > **Selection of loudspeakers** in the list for simultaneous set-up and control changes.
- > **Fully parametric user EQs and delay settings** for time alignment, with a graphical user interface
- > **Time Delay** with up to **2.8 seconds runtime**.
- > **Audio-over-Ethernet (AoE)** via **AES 67**.
- > Connection with **media control systems** via **API**.
- > Basic **network settings**.
- > **Documentation** is available **online**.
- > **Identification function** by way of flashing LEDs on the dp loudspeaker systems.
- > **Firmware updates** can be applied.



[SEEBURG Network Manager > Quick Start Manual \(pdf\)](#)

AES NETWORK interface

All selfpowered systems are equipped as standard with an **AES Network interface**.

This is used for **remote control** via the **SEEBURG Network Manager** and for **Audio-over-Ethernet (AoE) audio transmission** via **AES 67**.



AES Network

Flying Bracket



for A 2,
horizontal alignment,
incl. (2 x M10 x 20 socket head
screws, 2 x rubber washers, 1 x plate)

Order No. **01214/H/set/w** (RAL 9010)
Order No. **01214/H/set**

Flying Bracket



for A 2,
incl. (black version: 2 x M10 x 20
knurled screws, 2 x rubber washers
white version: 2 x M10 x 20 socket
head screws, 2 x rubber washers)

Order No. **01214/set/w** (RAL 9010)
Order No. **01214/set**

Knurled Screw

M10 x 20 mm



Order No. **73750/w** (RAL 9010)
Order No. **73750**

Rubber Washer

for flying brackets,
5 mm x 40 mm Ø



Order No. **01206**

Plate

for A 2 / A 3 flying brackets,
horizontal alignment,
replacement for pole mount flange,
110 mm Ø flange with M10 nut



Order No. **08119/M10/w** (RAL 9010)
Order No. **08119/M10**

Knurled Head Nut

reduction screw for fastening
M10 Pole Mount Adapter (08126)



Order No. **73755**

Pole Mount Adapter

35 mm Ø → M10 x 16 mm,
M8 x 20 star knob screw

Order No. **08126**



35 mm Ø → M10 x 16 mm

Order No. **08126/II**

Flange

with ball and socket joint,
with additional locking screw,
M10 x 15, max. load 15 kg

Order No. **08125**



Quick Trigger Clamp

max. load 100 kg

Order No. **01223/100 kg**



Quick Trigger Clamp - small

M10, max. load 20 kg

Order No. **01223/20 kg**



Truss Clamp

incl. M10 Adapter,
max. load 15 kg

Order No. **01221**



Steel Safety

4 mm x 600 mm, black,
max. load 10 kg (BGI 810-3),
quick connector undetachably

Order No. **01376/4**



Ring Screw

M10– DIN 580

Order No. **73700** (zincd)

Order No. **73700/sw** (black zincd)



TV Spigot

10 mm internal thread,
28 mm Ø

Order No. **08128**



ACCESSORIES A 2 dp

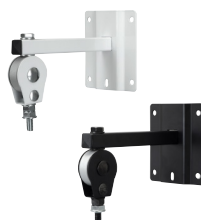
Wall Mount



bar: 269 mm, max. load 40 kg,
incl. (M10 x 70 mm socket head screw,
M10 hex lock nut and flat washer)

Order No. **08130/F/269/w** (RAL 9010)
Order No. **08130/F/269**

Wall Mount



for permanent installation,
incl. tilt angle stop,
M10, max. load 15 kg

Order No. **08131/F/w** (RAL 9010)
Order No. **08131/F**

Wall Mount



2 x M6 fixing holes (d=73 mm),
1 x M10 fixing hole (center),
max. load 25 kg

Order No. **03034/w** (RAL 9010)
Order No. **03034**

Wall Mount



ball and socket joint flange (08125)
+ 08125/plate

Order No. **08125/set**

Spacer



for Wall Mount (03034)
polyurea coated

Order No. **03034/spc**

Cover



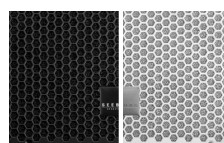
for A 2, padded
Order No. **01243**

Rain Cover



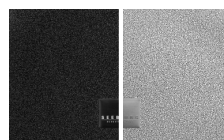
for A 2,
with zipper
Order No. **01243/outdoor**

Honeycomb Grilles



for A 2 front replacement.

Foam behind grille
Order No. **97004/hex/compl**
Order No. **97004/hex/compl/w**
(RAL 9010)



Foam in front of grille
Order No. **97004/compl**
Order No. **97004/compl/w**
(RAL 9010)

Hybrid Cable System



PowerCon-PowerCon / XLR-XLR

2,5 m Order No. **08462**
5 m Order No. **08464**
10 m Order No. **08466**
15 m Order No. **08468**



Spacer -> Wall Mount