

Flying Bracket for G3 Order No. 01350/set

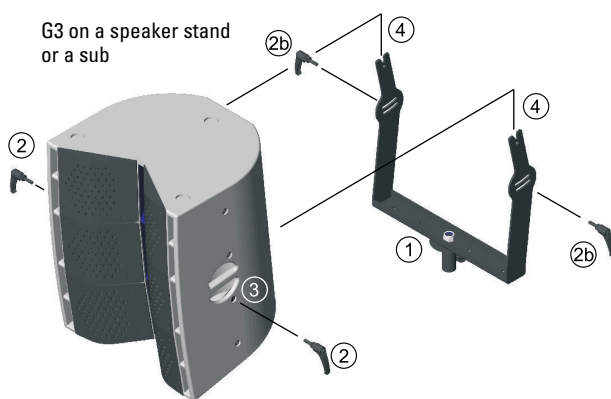
The set consists of the following components:

- 1 x G3 flying bracket (Order No. 01350)
- 4 x M10 x 20 mm handle screws
- 1 x M20 x 30 mm socket head screw
- 1 x flat DIN 125 / 36,5 mm \varnothing

Safety notice:

This device may only be installed by qualified personnel. All relevant safety regulations must be observed at all times. The maximum load capacity of the G3 Flying Cradle is two G3 elements. It is not permitted to suspend any additional loads from the cradle or the loudspeaker enclosure. Flown systems must always be secured with a second safety cable independent of the flying cradle.

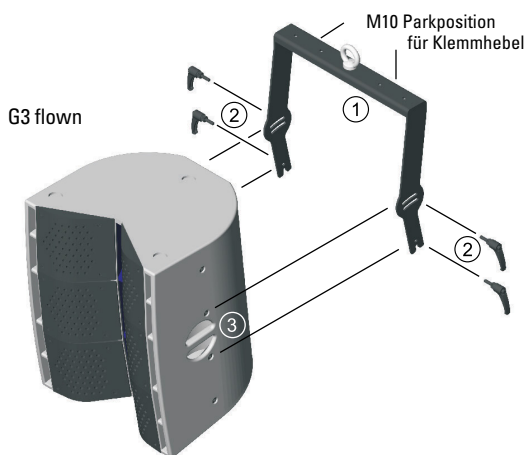
Montage- Ground Stacked



- Screw two of the M10 x 20 mm handle screws (2) into the M10 mounting points below the carrying handles of the G3 cabinet (3). Leave about 5 mm of the thread free.
- Hang the G3 on these screws in the slot at the end of the flying bracket arms (4).
- The other two M10 x 20 mm handle screws are used to fix the tilt angle of the loudspeaker (2b).
- When the G3 is at the correct angle, tighten all 4 of the handle screws to finally fix the position.



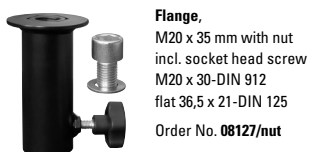
Montage- flown



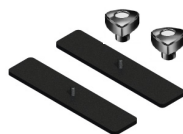
- The G3 flying bracket (1) is fastened to the G3 cabinet with the 4 x M10 x 20 mm handle screws (2) using the four M10 mounting points immediately above and below the carrying handles in the cabinet (3).
- The upper handle screws are used to adjust the tilt angle. When the angle is correct, tighten all 4 handle screws to fix the position.
- If the G3 is to be aimed to point upwards to cover an audience area higher than the hanging point, the frame must be mounted 180° horizontally rotated compared to the illustration.



OPTIONAL ACCESSORIES



Flange,
M20 x 35 mm with nut
incl. socket head screw
M20 x 30-DIN 912
flat 36,5 x 21-DIN 125
Order No. 08127/nut



Stabilisation,
for G3 flying bracket, 2 pcs.,
incl. 2 x triangular nut M10
Order No. 01350/stab/set



Doughty Trigger Clamp
SWL - 200 kg
Order No. 01222
additionally
hex bolt M10 x 25 mm-
DIN 933 - 10.9
hex lock nut M10-DIN 985
flat 20 x 10,5-DIN 125



Ring Screw,
M20 - DIN 580
Order No. 73900
additionally
hex lock nut M20-DIN 985,
flat 55 x 20,5-DIN 9021



TV Adapter,
M20 external thread,
28 mm \varnothing x 147 mm
Order No. 08128/M20
additionally
hex lock nut M20-DIN 985,
flat 55 x 20,5-DIN 9021