



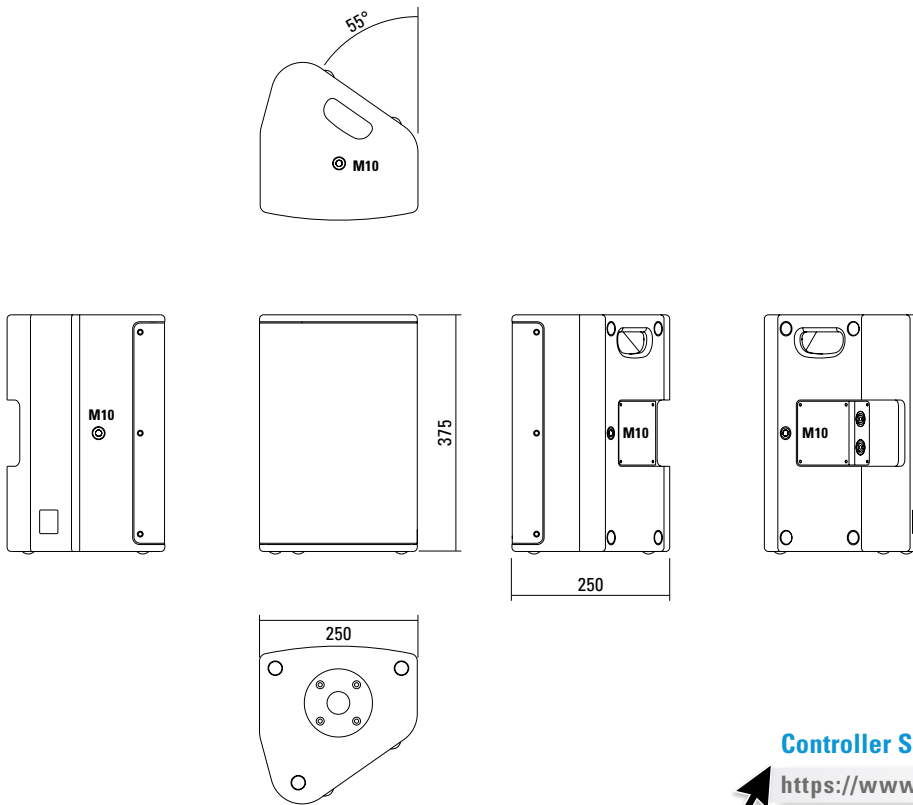
Multifunktionales und kompaktes 2-Wege System der Oberklasse. Der koaxiale Aufbau sorgt in Kombination mit einem aufwendig entwickelten und großflächigen Horn für ein absolut gleichmäßiges Übertragungsverhalten auch außerhalb der Hauptabstrahlachse. Hochleistungs-Neodymantriebe und Langhubschwingspulen sorgen für einen hohen Wirkungsgrad bei gleichzeitig stark reduzierten Verzerrungen. Für die Installation und den universellen Einsatz stehen drei M10 Gewindeeinsätze zur Aufnahme des Zubehörs zur Verfügung.

## PRODUCT SPECIFICATIONS

<b>Speaker Components</b>	8" Nd (2,5" VC) / 1" Nd (1,7" VC)
<b>Description</b>	Multifunctional Coaxial Sound System
<b>Power</b> AES / Peak	250 W / 750 W
<b>Impedance</b> nominal	8 Ω
<b>SPL</b> 1 W / Peak @ 1 m	95 dB / 124 dB
<b>Usable Range</b>	70 Hz - 19 kHz (-6 dB)
<b>Tuning Frequency</b> Excursion minimum	80 Hz
<b>X - Overpoint</b> acoustical	1,6 kHz
<b>Coverage</b> horizontal / vertical	90° x 60° - rotatable
<b>Connectors</b>	2 x Speakon NL4MP in/out Coding: 1 +/- HiMid, 2 +/- loop thru
<b>Handles</b>	1 x
<b>Rigging / Fittings</b>	3 x M10 35 mm pole mount
<b>Weight</b>	8 kg
<b>Size</b> height x width x depth	37,5 x 25,0 x 25,0 cm
<b>Order No.</b>	<b>01091</b>



## DIMENSIONS

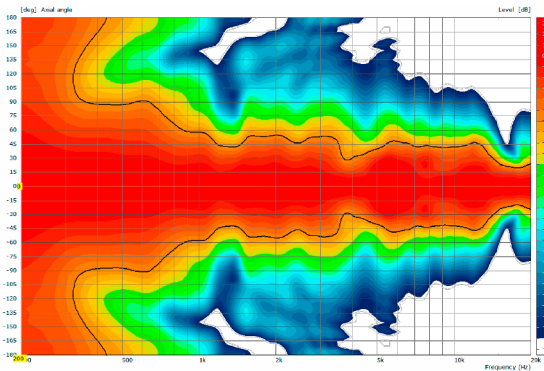


### Controller Setups:

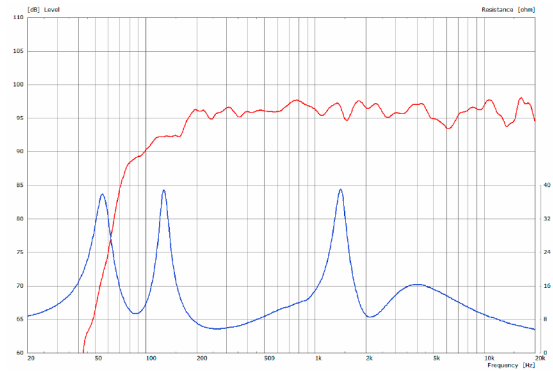
<https://www.seeburg.net/de/downloads>

## MEASUREMENTS

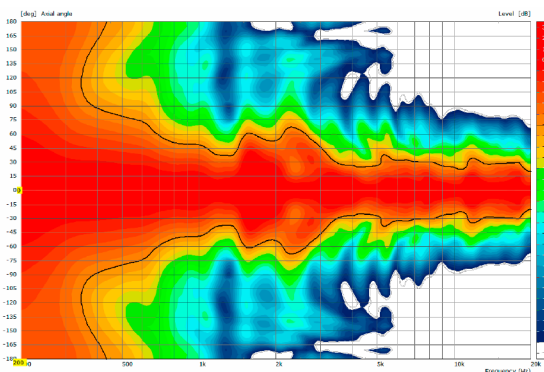
### 2D Directivity Plot - horizontal



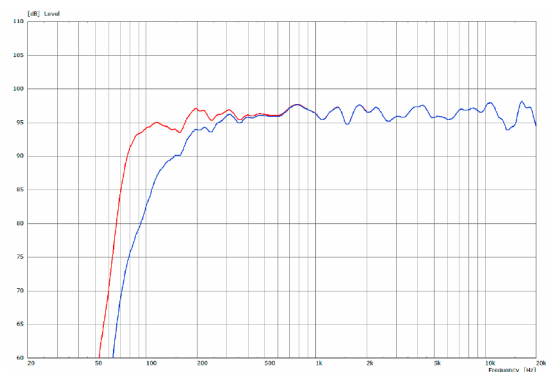
### Sensitivity 1 W @ 1 m + Impedance



### 2D Directivity Plot - vertical



### Frequency Response with Presets



**Flying-Bracket**



for X 2,  
horizontal alignment,  
(incl. 4 x socket head screws  
M10 x 20 mm, 4 x M10 washer,  
4 x rubber washer)

Order No. **01201/X2/set**

**Flying L-Bracket**



for A 1 / GL 8 / X 1 / X 2 / TS Nano,  
horizontal and vertical alignment,  
(incl. white version: 1 x socket head  
screw M10 x 20 mm,  
black version: 1 x adjustable handle  
screw M10 x 20 mm)

Order No. **01200/set/w** (RAL 9010)

Order No. **01200/set**

**Handle Screw**



for flying brackets,  
adjustable,  
M10 x 20 mm

Order No. **08375/20**

**Pole Mount Adapter**



35 mm  $\varnothing$   $\rightarrow$  M10 x 16 mm,  
M8 x 20 star knob screw

Order No. **08126**

35 mm  $\varnothing$   $\rightarrow$  M10 x 16 mm

Order No. **08126/II**

**Knurled Head Nut**



reduction screw for fastening  
M10 pole mount adapter (08126)

Order No. **73755**

**Quick Trigger Clamp**



max. load 100 kg

Order No. **01223/100 kg**

**Quick Trigger Clamp - small**



M10, max. load 20 kg

Order No. **01223/20 kg**

**Truss Clamp**



incl. M10 Adapter,  
max. load 15 kg

Order No. **01221**

**Ring Screw**



M10– DIN 580

Order No. **73700** (zincd)

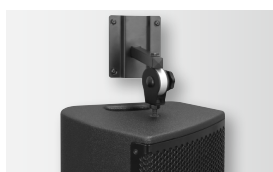
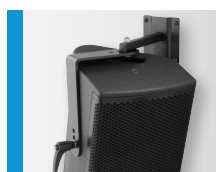
Order No. **73700/sw** (black zincd)

**Steel Safety**



4 mm x 600 mm, black,  
quick connector undetachably,  
max. load 10 kg (BGI 810-3)

Order No. **01376/4**



## ACCESSORIES X 2

### Wall Mount



bar: 269 mm,  
(incl. socket head screw M10 x 70 mm,  
M10 hex lock nut and flat washer),  
max. load 40 kg

Order No. **08130/F/269/w** (RAL 9010)  
Order No. **08130/F/269**

### Wall Mount



with tilt unit,  
max. load 40 kg

Order No. **08130**

### Wall Mount



for permanent installation,  
incl. tilt angle stop,  
M10, max. load 15 kg

Order No. **08131/F/w** (RAL 9010)  
Order No. **08131/F**

### Flange



with ball and socket joint,  
with additional locking screw,  
M10 x 15 mm, max. load 15 kg

Order No. **08125**

### Wall Mount



ball and socket joint flange (08125)  
+ 08125/plate

Order No. **08125/set**

### Quick Trigger Clamp - small



M10, max. load 20 kg

Order No. **01223/20 kg**

### Truss Clamp



incl. M10 mini TV spigot,  
max. load 15 kg

Order No. **01221**

### Bag



for 2 x X 2 / 2 x TSM 8, padded  
with pocket for accessories

Order No. **01245**

### Rain Cover



for X 2,  
with zipper

Order No. **01225/X2/outdoor**

### Flight Case Trunk



for 4 pcs. X 2, with accessory  
compartment, partition walls, interior  
lined with felt, heavy duty, 9 mm  
birch multiplex, PVC coated black, 6 x  
recessed sprung handles, 1 x butterfly  
latch medium, 4 x 100 mm blue wheels  
(2 pcs. with brake), 29 kg  
Size (H x W x D): 58 x 74 x 60 cm

Order No. **16555/4**

### Flight Case Trunk



for 2 pcs. X 2, with accessory compart-  
ment (16 cm wide), interior lined with  
felt, heavy duty, 9 mm birch multiplex,  
PVC coated black, 2 x recessed sprung  
handles, 1 x butterfly latch medium  
Size (H x W x D): 74 x 33,5 x 44,5 cm

Order No. **16555**



Flight Case Trunk- 4 x X 2



Flight Case Trunk- 2 x X 2