



Das Hochleistungstopteil K 20 eignet sich aufgrund seiner Konstruktion für flexible Anwendungen in Vertikal- und Horizontalausrichtung. Die optimierte Anordnung und Ansteuerung der 2 x 10"/1,4" Komponenten sorgt für ein sehr präzises Abstrahl- und Phasenverhalten. Für die Installation kann das universelle MultiRigg™ montiert werden. Das K 20 System ist mit einer passiven Weiche ausgestattet. Zur Anpassung an die Beschallungsaufgabe stehen zwei unterschiedliche Hornvarianten zur Verfügung.

PRODUCT SPECIFICATIONS

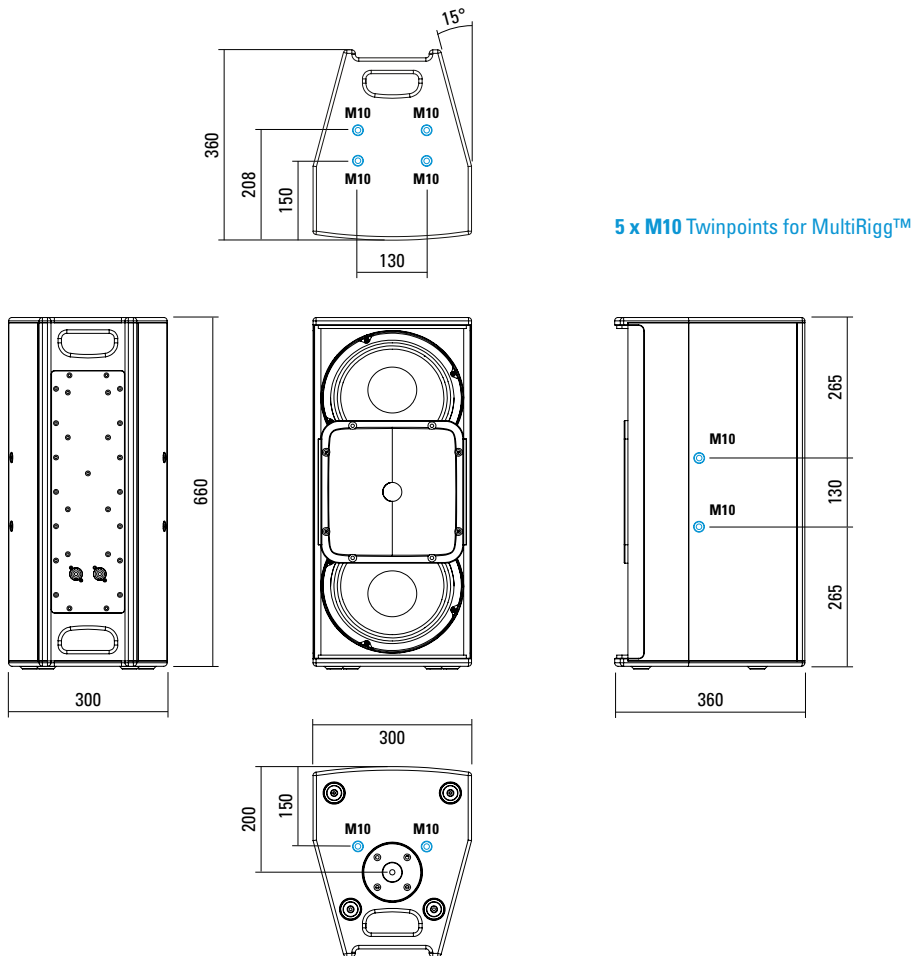
Speaker Components	2 x 10" Nd / 1,4" Nd
Description	High Power HiMid System
Power AES / Peak	800 W / 2400 W
Impedance nominal	4 Ω
SPL 1 W / Peak @ 1 m	100 dB / 134 dB
Usable Range	70 Hz - 18 kHz (-6 dB)
Tuning Frequency excursion minimum	80 Hz
X-Overpoint acoustical	900 Hz
Coverage horizontal / vertical	90° x 60° (60° x 50°), rotatable
Connectors	2 x Speakon NL4MP in/out Coding: 1 +/- HiMid, 2 +/- loop thru
Handles	2 x
Rigging / Fittings	10 x M10 for MultiRigg™ 35 mm Pole Mount
Weight	22,5 kg
Size height x width x depth	66,0 x 30,0 x 36,0 cm
Order No.	01024/90° (90° x 60° Version) 01024/60° (60° x 50° Version)



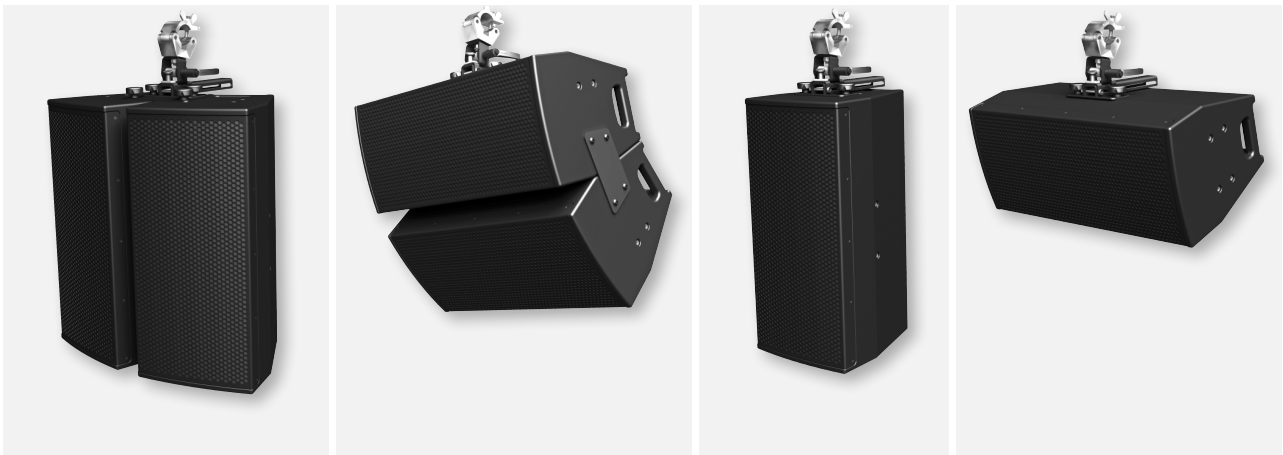
Einfache Installation mit dem universellen MultiRigg™.



DIMENSIONS

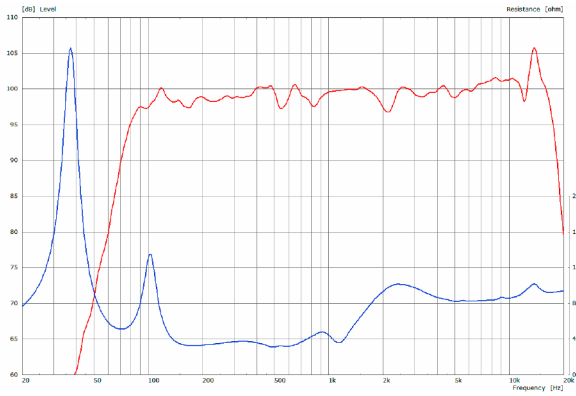


APPLICATIONS



MEASUREMENTS

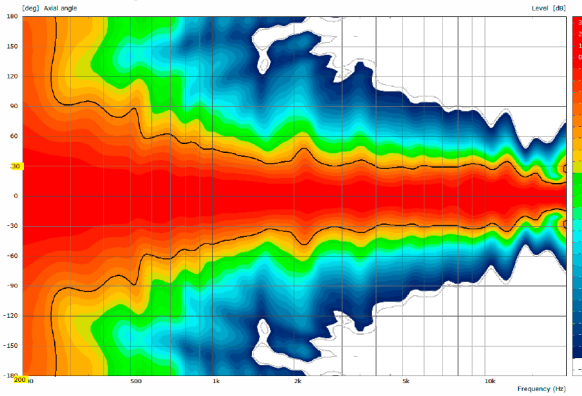
K 20 - Sensitivity 1 W @ 1 m + Impedance with Preset



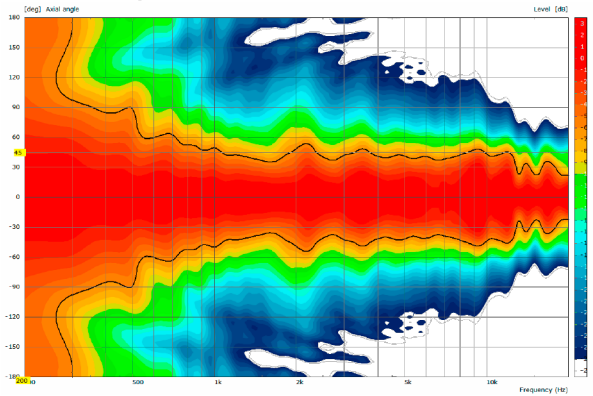
Controller Setups:

<https://www.seeburg.com/de/downloads>

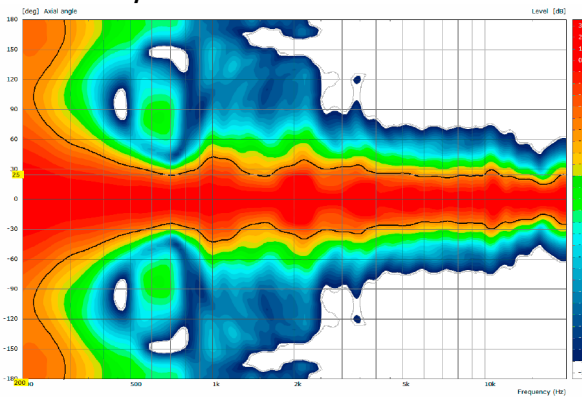
2D Directivity Plot - horizontal - 60° x 50°



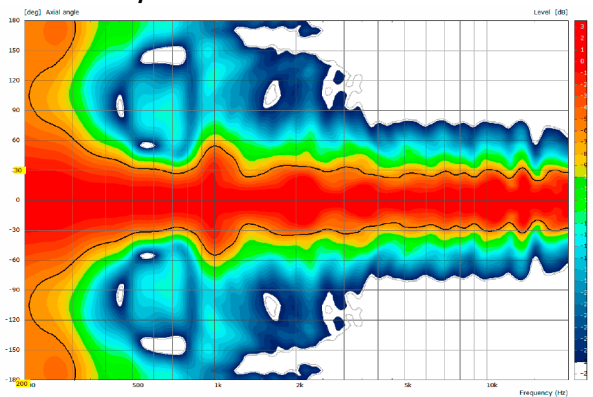
2D Directivity Plot - horizontal - 90° x 60°



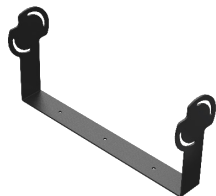
2D Directivity Plot - vertikal - 60° x 50°



2D Directivity Plot - vertikal - 90° x 60°



Flying Bracket



for K 20, horizontal alignment
(incl. 4 x socket head screws
M10 x 20 mm)
Order No. **01208/H**

Connector



K 20 -> K 20, 2 x pcs.,
(incl. black version: 6 x knurled
screws M10 x 18 mm, white version:
6 x socket head screws M10 x 20 mm),
max. load 75 kg
Order No. **08157/set/w** (RAL 9010)
Order No. **08157/set**

Knurled Screw



M10 x 20 mm
Order No. **73750/w** (RAL 9010)
Order No. **73750**

Knurled Head Nut



reduction screw for fastening
M10 Pole Mount Adapter (08126)
Order No. **73755**

Quick Trigger Clamp



max. load 100 kg
Order No. **01223/100 kg**

Steel Safety



8 mm x 600 mm,
max. load 40 kg (BGI 810-3),
quick connector undetachably
Order No. **01376/8**

Ring Screw



M10– DIN 580
Order No. **73700** (zincd)
Order No. **73700/sw** (black zincd)

TV Spigot



M10 internal thread,
28 mm Ø
Order No. **08128**

Pole Mount Adapter



35 mm ø -> M10 x 16 mm,
M8 x 20 star knob screw
Order No. **08126**
Order No. **08126/w** (RAL 9010)

Pole Mount Adapter



35 mm ø -> M10 x 16 mm
Order No. **08126/II**
Order No. **08126/II/w** (RAL 9010)



ACCESSORIES K 20

MultiRigg™



for flown and ground stacked applications, (incl. 2 x knurled screws M10 x 20 mm, 1 x handle screw M8 x 55 mm), max. load 50 kg
Order No. **01360**

MultiRigg™ Light



for fixed installations, (incl. 2 x socket head screws M10 x 20 mm), max. load 50 kg
Order No. **01362**

MultiRigg™ Basic



(incl. load adapter M10, 2 x knurled screws M10 x 20 mm), max. load: 50 kg
Order No. **01364**

MultiTilt™



Tilt adapter with adjustable tilt from 0° to 37,5° (2,5° steps), integr. pole mount adapter with clamping device, (incl. 2 x knurled screws M10 x 20 mm), max. load 50 kg
Order No. **01370**

Wall Mount



for U-brackets, (incl. socket head screw M10 x 70 mm, M10 hex lock nut and flat washer), max. load 40 kg for 15" speakers
Order No. **08130/F400/w** (RAL 9010)
Order No. **08130/F400**

Wall Mount



for U-brackets, (incl. socket head screw M10 x 70 mm, M10 hex lock nut and flat washer), max. load 40 kg, for 8"-12" speakers
Order No. **08130/F/269/w** (RAL 9010)
Order No. **08130/F/269**

Speaker Stand



incl. wind up, height 138,5 to 218 cm, max. load 50 kg
Order No. **03011**

Rain Cover



for K 20
Order No. **01253/RC**

Cover



for K 20, padded
Order No. **01253**

Flight Case



for 2 pcs. K 20 and accessories, heavy duty, 9 mm birch multiplex, PVC coated, 6 x recessed sprung handles, 2 x butterfly catches, 4 x 100 mm blue wheels, 2 pcs. with brake, inserts for accessories, interior lined with felt.
Order No. **16031**



MultiTilt™

