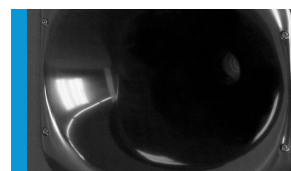




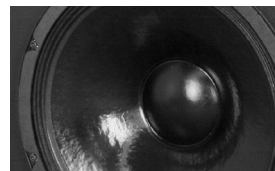
Fullrangesystem der Oberklasse, mit einem exakt definierten, symmetrischen Abstrahlverhalten und hoher Reichweite. Überzeugender akustischer Output aufgrund leistungsfähiger 15"/1.4" Komponenten und aktiver Trennung mittels separaten Endstufen und Controller. Besondere Eignung für die hochwertige Festinstallation in Konzertsälen, Multifunktionsarenen und den universellen Einsatz. Eine passive (xov) Variante ist ebenfalls erhältlich.

PRODUCT SPECIFICATIONS

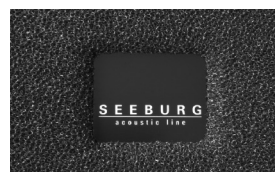
	F 8 a	F 8 xov
Speaker Components	15" Nd/ 1,4" Nd	15" Nd/ 1,4" Nd
Description	Fullrange Sound System	Fullrange Sound System
Power <small>AES / Peak</small>	LF: 500 W / 1500 W HF: 80 W / 240 W	500 W / 1500 W
Impedance <small>nominal</small>	LF: 8 Ω / HF: 8 Ω	8 Ω
SPL <small>1 W / Peak @ 1 m</small>	LF: 99 dB / 129 dB HF: 110 dB / 138 dB	99 dB / 132 dB
Usable Range	50 Hz - 18 kHz (- 6 dB)	50 Hz - 18 kHz (- 6 dB)
Tuning Frequency <small>excursion minimum</small>	48 Hz	48 Hz
X-Overpoint <small>acoustical</small>	Depends on preset	850 Hz
Coverage <small>horizontal / vertical</small>	60° x 50°	60° x 50°
Max. Splay Angle	---	---
Connectors	2 x Neutrik Speakon NL4MP in/out Coding: 1 +/- HF, 2 +/- LF	2 x Neutrik Speakon NL4MP in/out Coding: 1 +/- HiMid, 2 +/- loop thru
Handles	---	---
Rigging / Fittings	3 x M10 / 4 x M8	3 x M10 / 4 x M8
Weight	25 kg	26 kg
Size <small>height x width x depth</small>	80,0 x 45,0 x 41,0 cm	80,0 x 45,0 x 41,0 cm
Order No.	00350/a	00350/xov



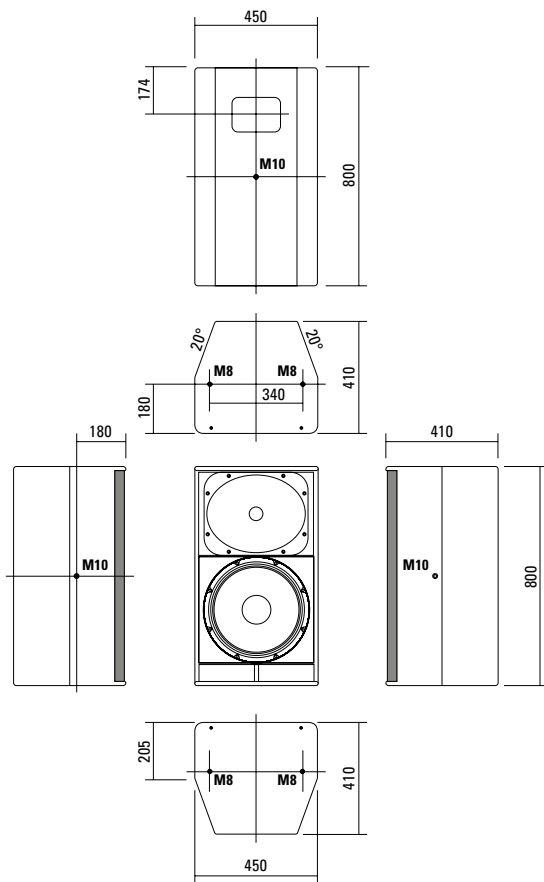
Hochpräzises 60° x 50°- Horn.



Gegen Spritzwasser beschichtete Membrane.



DIMENSIONS



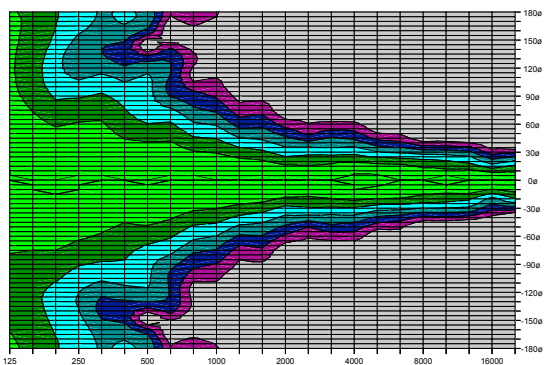
Controller Setups:



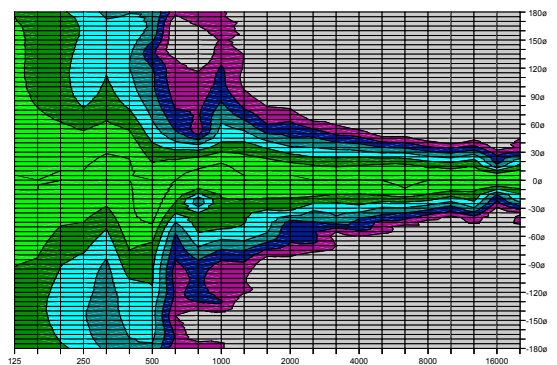
<https://www.seeburg.net/de/downloads>

COVERAGE PATTERNS

2D Directivity Plot - horizontal



2D Directivity Plot - vertical



ACCESSORIES F 8

Flying Bracket



for A 8 / TSM 15 / F 8,
incl. (black version: 2 x M10 x 30
adjustable handle screws
white version: 2 x M10 x 20
socket head screws)
Order No. **01217/set/w** (RAL 9010)
Order No. **01217/set**

Flying Bracket



for F 8,
horizontal alignment
Order No. **01217/F8/H/w** (RAL 9010)
Order No. **01217/F8/H**

Handle Screw



for flying brackets, adjustable
M10 x 30
Order No. **08375/30**

Rubber Washer



for flying brackets,
5 mm x 40 mm Ø
Order No. **01206**

Knurled Head Nut



reduction screw for fastening
M10 Pole Mount Adapter (08126)
Order No. **73755**

Pole Mount Adapter



35 mm Ø → M10 x 16 mm,
M8 x 20 star knob screw
Order No. **08126**
35 mm Ø → M10 x 16 mm
Order No. **08126/II**

Quick Trigger Clamp



max. load 100 kg
Order No. **01223/100 kg**

Ring Screw



M10– DIN 580
Order No. **73700** (zincd)
Order No. **73700/sw** (black zincd)

TV Spigot



10 mm internal thread,
28 mm Ø
Order No. **08128**

Chain Fastener



VBS 7 mm
Order No. **01378**

Steel Safety



8 mm x 600 mm, black,
max. load 40 kg (BGI 810-3),
quick connector undetachably
Order No. **01376/8**

Wall Mount



bar: 400 mm, max. load 40 kg,
incl. (M10 x 70 mm socket head screw,
M10 hex lock nut and flat washer)
Order No. **08130/F400/w** (RAL 9010)
Order No. **08130/F400**

