



Der CXT 810 ist ein leistungsfähiger und kompakter Decken- bzw. Aufbau- lautsprecher mit symmetrischem und homogenem Abstrahlverhalten. Seine guten akustischen Eigenschaften verdankt er einer coaxial angeordneten 8" / 1" Treiberkombination in Verbindung einer passiven Frequenzweiche mit Pegel- und Phasen- kompensation.

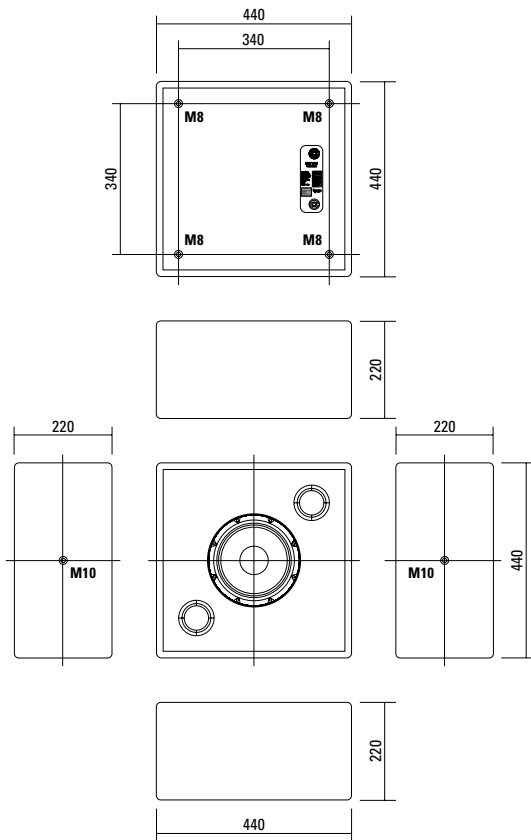
PRODUCT SPECIFICATIONS

Speaker Components	8" / 1" Coaxial
Description	Coaxial Transducer
Power AES / Peak	200 Watt / 600 Watt
Impedance nominal	8 Ω
SPL 1 Watt / Peak @ 1 m	96 dB / 122 dB
Usable Range	65 Hz - 18 kHz
Tuning Frequency excursion minimum	80 Hz
Coverage horizontal / vertical	500 Hz - 1 kHz - 2 kHz - 4 kHz - 8 kHz 120° - 100° - 90° - 90° - 90°
Connectors	2 x Neutrik Speakon 4-pole Coding: 1+/- HiMid, 2+/- Sub
Rigging/ Fittings	2 x M10 4 x M8
Option	100 V Transformer 25 / 50 / 100 Watt
Weight	16,5 kg
Size height x width x depth	44,0 x 44,0 x 22,0 cm
Order No.	00102 (black)



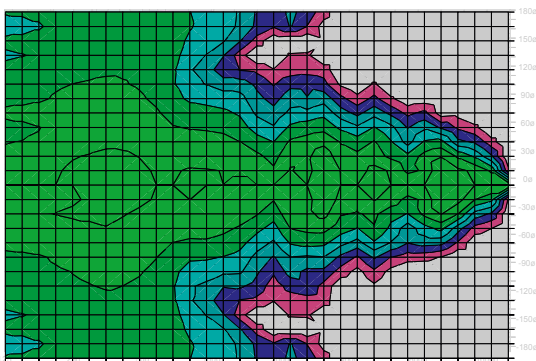
Dezente Farb-Variante in lichtgrau.

DIMENSIONS

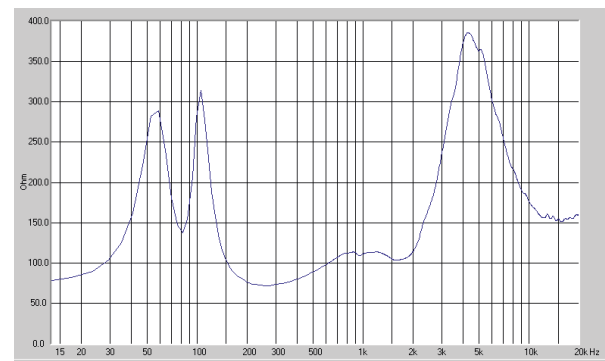


MEASUREMENTS

2D Directivity Plot - vertical / horizontal



Impedance mit 100 V Transformier/ 100 W



ACCESSORIES CXT 810

Flying Bracket



for CXT 810
incl. screws
(per unit: 2 pcs. M10 x 30 adjustable
handle screws with axial bearing)
Order No. **01201/set**

Handle Screw



for flying brackets,
axial bearing
M10 x 30
Order No. **08374**

Flange



35 mm \varnothing \rightarrow M10 x 16 mm,
M8 x 20 star knob screw
Order No. **08126**

Rubber Washer



for flying brackets,
5 mm x 40 mm \varnothing
Order No. **01206**

Doughty Quick Trigger Clamp



max. load 100 kg
Order No. **01223/100 kg**

Doughty Twenty Clamp



M10, max. load 20 kg
Order No. **01223/20 kg**

Steel Safety



6 mm x 600 mm, black,
max. load 22 kg (BGI 810-3),
quick connector undetachably
Order No. **01376/6**

Chain fastener



VBS 7 mm
Order No. **01378**

Ring Screw



M8– DIN 580, zinced
Order No. **73600**
M10– DIN 580, zinced
Order No. **73700**

TV Spigot



10 mm internal thread,
28 mm \varnothing
Order No. **08128**

100 V Transformer



for CXT 810,
100 V transformer (25 - 50 - 100 W)
with 2 x rubber washers and
steel washer, D = 70 mm