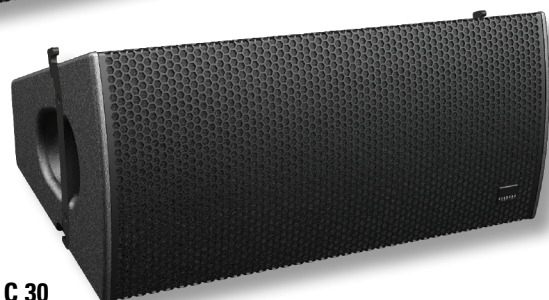


Constant Curvature Array Units **C 15 / C 30**



C 15

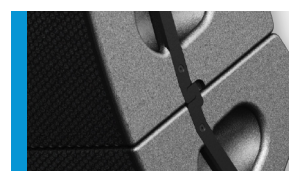


C 30

Das C 15 und C 30 System vereint als "Constant Curvature Array" die Vorzüge von Punktquellenlautsprechern mit der Performance von Line Arrays. Die vertikale Abstrahlung wird durch die Addition der einzelnen C-Serie Komponenten definiert. Mit dem C 15 und C 30 System stehen Winkel von 15° bzw. 30° zur Verfügung. Damit lassen sich mit relativ wenigen Elementen auch größere Hörerflächen sehr präzise und gleichmäßig beschallen. Die Anwendungen liegen im Bereich Theater, Stadien, Clubbeschallung und mittlerer Open Air Konzerte.

PRODUCT SPECIFICATIONS

| | C 15 | C 30 |
|--|--|--|
| Speaker Components | 2 x 10" Nd (3" VC) 3 x 1" Nd (1,7" VC) | 2 x 10" Nd (3" VC) 3 x 1" Nd (1,7" VC) |
| Description | Constant Curvature Array Units | |
| Power <small>AES / Peak</small> | 800 W / 2400 W | 800 W / 2400 W |
| Impedance <small>nominal</small> | 8 Ω | 8 Ω |
| SPL <small>1 W / Peak @ 1m</small> | 100 dB / 134 dB | 100 dB / 134 dB |
| Usable Range <small>- 6 dB</small> | 70 Hz - 20 kHz | 70 Hz - 20 kHz |
| Tuning Frequency <small>excursion minimum</small> | 80 Hz | 80 Hz |
| X-Overpoint <small>acoustical</small> | 800 Hz | 800 Hz |
| Coverage <small>horizontal x vertical</small> | 90° x 15° | 90° x 30° |
| Max. Splay Angle | 15° | 30° |
| Connectors | 2 x Speakon NL4MP in/out, Coding: 1+/- HiMid, 2+/- loop thru | 2 x Speakon NL4MP in/out, Coding: 1+/- HiMid, 2+/- loop thru |
| Handles | 2 x | 2 x |
| Rigging / Fittings | Integrated flying hardware, 8 x M10 for MultiRigg™/ MultiTilt™ | Integrated flying hardware, 8 x M10 for MultiRigg™/ MultiTilt™ |
| Weight | 25 kg | 23,5 kg |
| Size <small>height x width x depth</small> | 32,0 x 70,0 x 38,0 cm | 32,0 x 70,0 x 38,2 cm |
| Order No. | 00470 | 00472 |



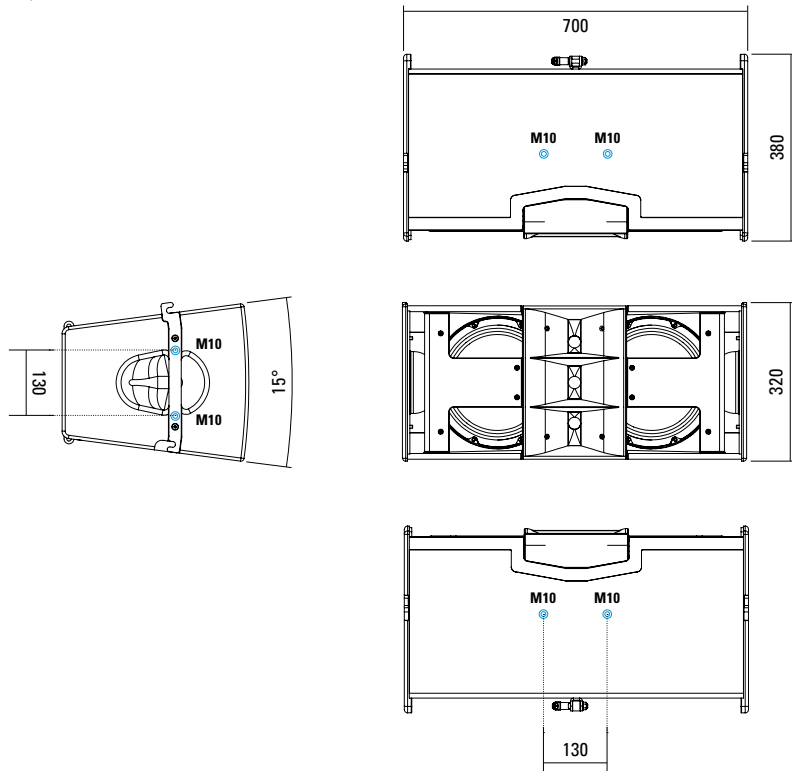
Integrierte Flugmechanik



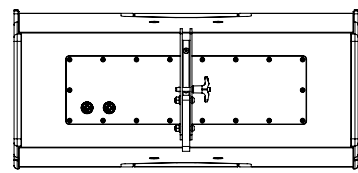
MultiRigg™ Hardware

DIMENSIONS

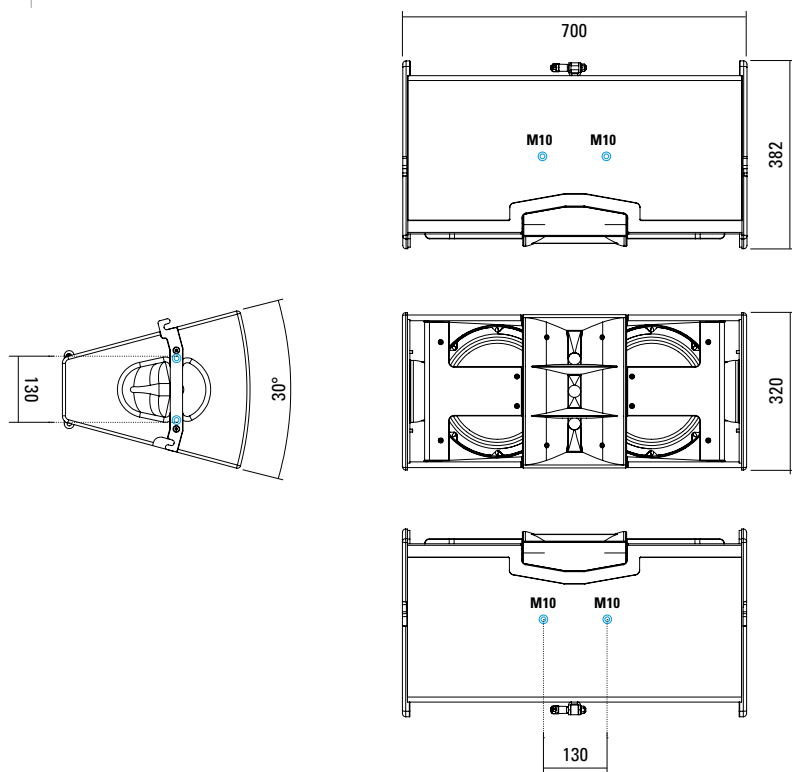
C 15



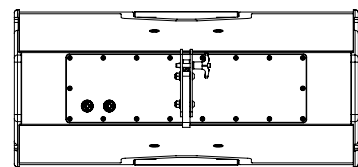
8 x M10 Twinpoints für MultiRigg™ / MultiTilt™



C 30

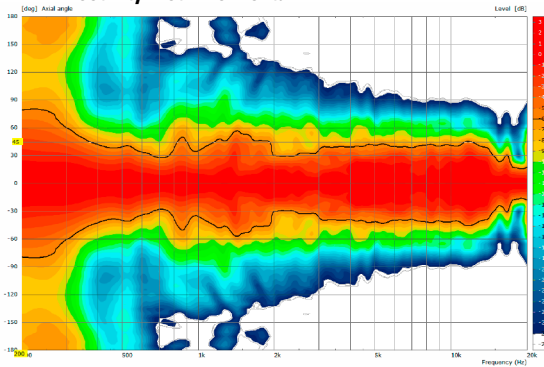


8 x M10 Twinpoints für MultiRigg™ / MultiTilt™

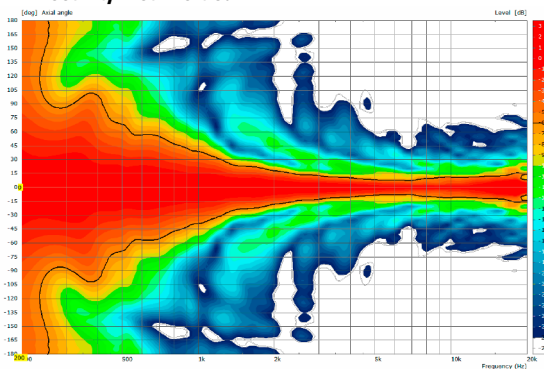


C 15

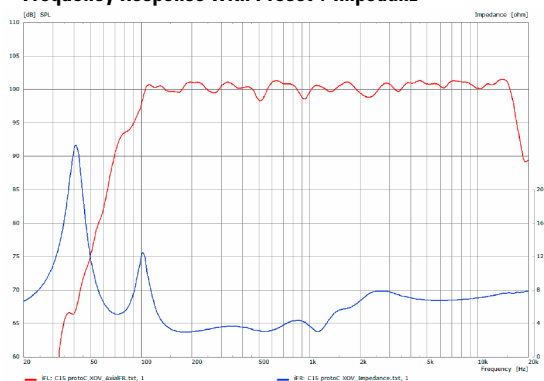
2D Directivity Plot - horizontal



Directivity Plot - vertical

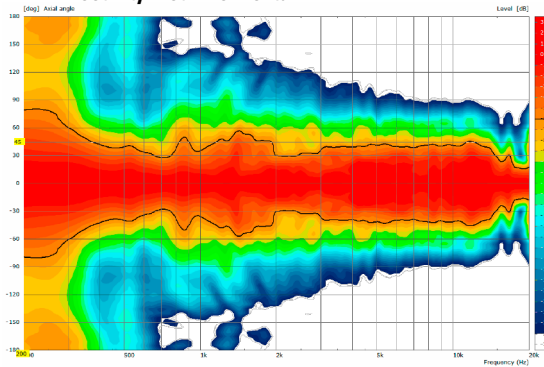


Frequency Response with Preset + Impedanz

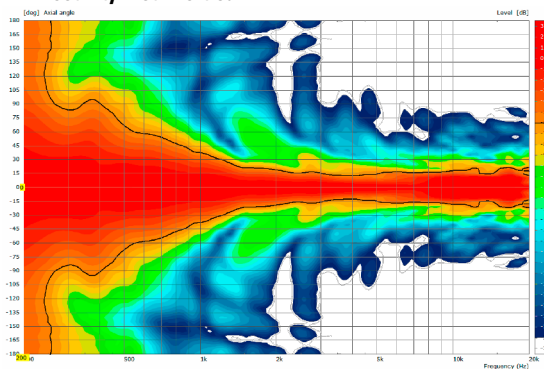


C 30

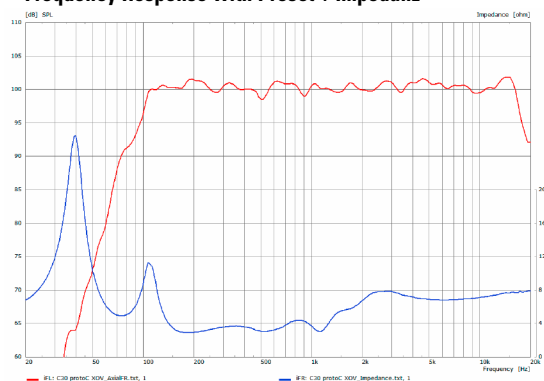
2D Directivity Plot - horizontal

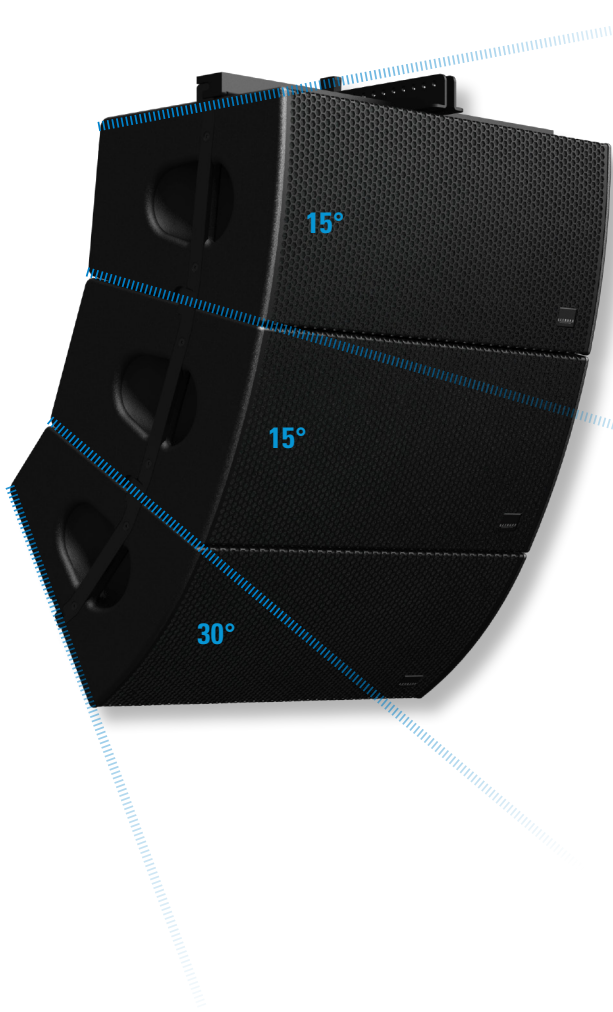


Directivity Plot - vertical



Frequency Response with Preset + Impedanz

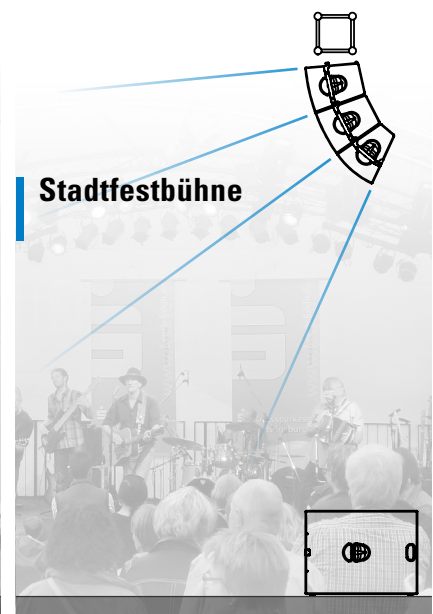
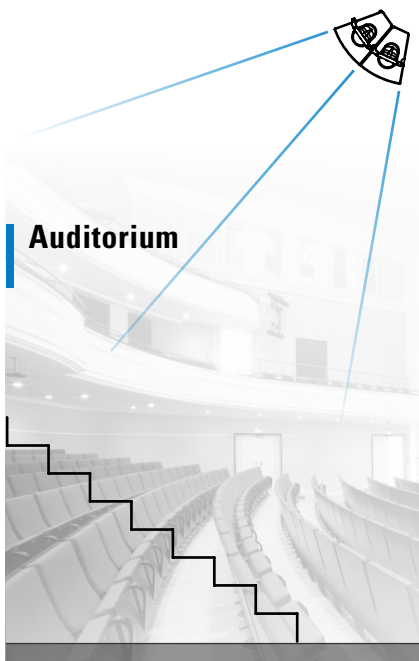




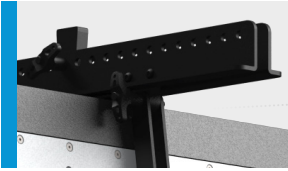
Constant Curvature

C 15 (15°) - C 30 (30°)

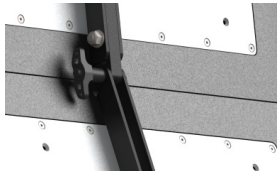
- Volle Skalierbarkeit
- Hochpräzise Schallabstrahlung
- Kompaktes Erscheinungsbild
- Hohe Leistung



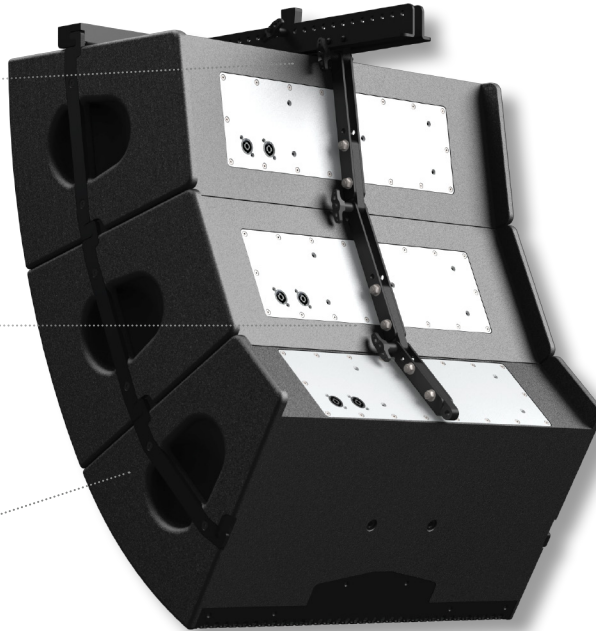
FLYING SYSTEM



Flying Cradle



Integrierte Flugmechanik



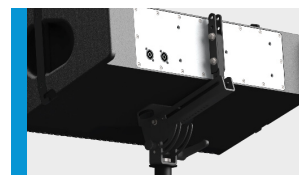
APPLICATIONS



C 30 / Galeo C Sub
MultiRigg™



C 15 + C 30 / C Sub
Flying Cradle



MultiRigg™ Hardware



Flying Cradle

for C 15 / C 30,
incl. load adapter M10 (01328),
max. load 150 kg,
Order No. **01357**



Load Adapter M10

for Galeo C - Galeo C Sub - PS 1 -
C 15 - C 30 flying frame / flying cradle
Order No. **01328**



MultiRigg™

for flown and ground stacked
applications, (incl. 2 x knurled screws
M10 x 20 mm, 1 x handle screw
M8 x 55 mm), max. load 50 kg
Order No. **01360**



MultiRigg™ Light

for fixed installations,
(incl. 2 x socket head screws
M10 x 20 mm), max. load 50 kg
Order No. **01362**



MultiRigg™ Basic

(incl. load adapter M10,
2 x knurled screws M10 x 20 mm),
max. load: 50 kg
Order No. **01364**



MultiTilt™

Tilt adapter with adjustable tilt
from 0° to 37,5° (2,5° steps),
integr. pole mount adapter with clamp-
ing device, (incl. 2 x knurled screws
M10 x 20 mm), max. load 50 kg
Order No. **01370**



MultiTilt™ Heavy Duty

for Galeo C / C-Series / K 24,
to be used with FD34 / FD33 truss,
minimum truss length: 0,21 m
consisting of base plate with M20
and tilt adjuster (incl. socket head
screw M20 x 30 mm),
weight: 13,5 kg, max. load 150 kg
Order No. **01359** (without traverse)



Speaker Pole

250 mm, ø 35 mm, M20,
with ring lock
Order No. **03020**



Pole Mount Adapter

35 mm ø → M10 x 16 mm,
star knob screw M8 x 20 mm
Order No. **08126**
Order No. **08126/w** (RAL 9010)



Pole Mount Adapter

35 mm ø → M10 x 16 mm
Order No. **08126/II**
Order No. **08126/II/w** (RAL 9010)



TV Spigot

M10 internal thread,
28 mm ø
Order No. **08128**



Knurled Screw

M10 x 20 mm
Order No. **73750/w** (RAL 9010)
Order No. **73750**



Knurled Head Nut

reduction screw for fastening
M10 Pole Mount Adapter (08126)
Order No. **73755**



Ring Screw

M10- DIN 580
Order No. **73700** (zincd)
Order No. **73700/sw** (black zincd)



Steel Safety

8 mm x 600 mm,
max. load 40 kg (BGI 810-3),
quick connector undetachably
Order No. **01376/8**

ACCESSORIES C 15 / C 30

Quick Trigger Clamp

max. load 100 kg

Order No. **01223/100 kg**



Quick Trigger Clamp

max. load 250 kg

Order No. **01223/250 kg**



Wall Mount

bar: 269 mm,
(incl. socket head screw M10 x 70 mm,
M10 hex lock nut and flat washer),
max. load 40 kg,

Order No. **08130/F/269/w** (RAL 9010)
Order No. **08130/F/269**



Wall Mount

bar: 400 mm,
(incl. socket head screw M10 x 70 mm,
M10 hex lock nut and flat washer),
max. load 40 kg

Order No. **08130/F/400/w** (RAL 9010)
Order No. **08130/F/400**



Flight Case

for 2 pcs. C 15 or C 30,
mounting option for 2 x MultiRigg
or MultiTilt, 100 mm wheels.
Size: 80 x 45,5 x 90 cm (w x d x h),
weight: 34 kg

Order No. **16600**

