



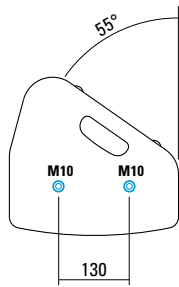
Multifunktionales und kompaktes 2-Wege System der Oberklasse. Der koaxiale Aufbau sorgt in Kombination mit einem aufwendig entwickelten und großflächigen Horn für ein absolut gleichmäßiges Übertragungsverhalten auch außerhalb der Hauptabstrahlachse. Hochleistungs-Neodymantriebe und Langhubschwingspulen sorgen für einen hohen Wirkungsgrad bei gleichzeitig stark reduzierten Verzerrungen. Für die Installation und den universellen Einsatz stehen neun M10 Gewindeeinätze zur Aufnahme des MultiRigg und weiteren Zubehörs zur Verfügung.

## PRODUCT SPECIFICATIONS

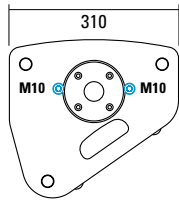
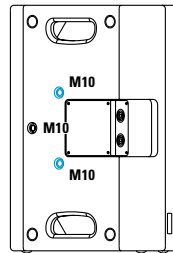
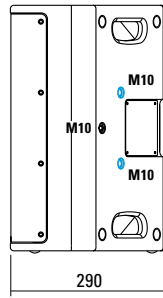
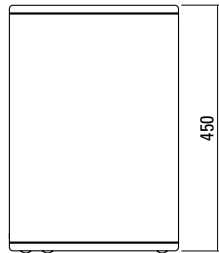
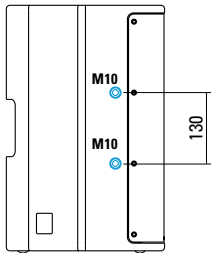
<b>Speaker Components</b>	10" Nd (3" VC) / 1" Nd (1,7" VC)
<b>Description</b>	Multifunctional Coaxial Sound System
<b>Power</b> AES / Peak	350 W / 1000 W
<b>Impedance</b> nominal	8 Ω
<b>SPL</b> 1 W / Peak @ 1 m	97 dB / 127 dB
<b>Usable Range</b>	60 Hz - 19 kHz (-6 dB)
<b>Tuning Frequency</b> Excursion minimum	70 Hz
<b>X - Overpoint</b> acoustical	1,2 kHz
<b>Coverage</b> horizontal / vertical	80° x 60° - rotatable
<b>Connectors</b>	2 x Speakon NL4MP in/out Coding: 1 +/- HiMid, 2 +/- loop thru
<b>Handles</b>	2 x
<b>Rigging / Fittings</b>	9 x M10 To be used with MultiRigg™ 35 mm pole mount
<b>Weight</b>	12,5 kg
<b>Size</b> height x width x depth	45,0 x 31,0 x 29,0 cm
<b>Order No.</b>	<b>01093</b>



## DIMENSIONS



4 x M10 Twinpoints for MultiRigg™



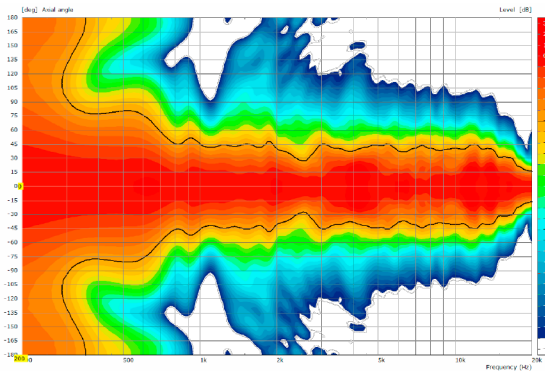
Controller Setups:



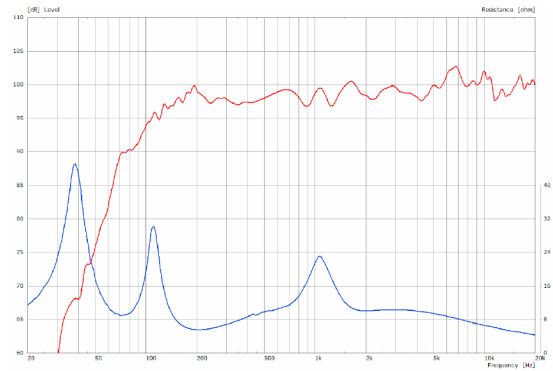
<https://www.seeburg.com/de/downloads>

## MEASUREMENTS

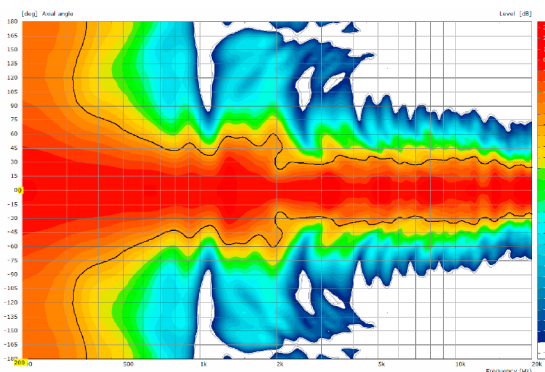
### 2D Directivity Plot - horizontal



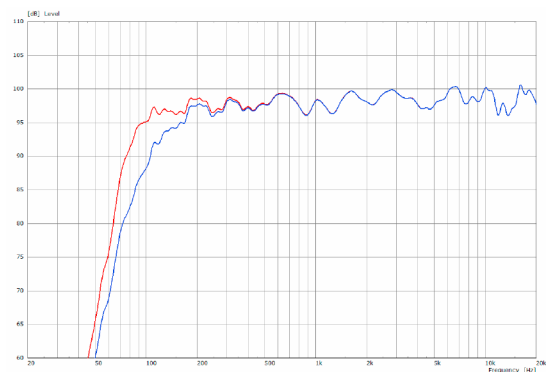
### Sensitivity 1 W @ 1 m + Impedance



### 2D Directivity Plot - vertical



### Frequency Response with Presets



**MultiRigg™**



swiveling fastening solution for horizontal and vertical alignment, for flown / ground stacked / mounted applications, incl. accessories (2 x knurled screws M10 x 20 mm, 1 x handle screw M8 x 55 mm), max. load 50 kg  
Order No. **01360**

**MultiRigg™ light**



version for fixed installations, for horizontal and vertical alignment, tiltable vertical angle, incl. accessories (2 x M10 x 20 socket head screws), max. load 50 kg  
Order No. **01362**

**MultiTilt™**



Tilt adapter with adjustable tilt from 0° to 37,5° (2,5° steps), integr. pole mount adapter with clamping device, 2 x knurled screws (M10 x 20 mm), max. load 50 kg  
Order No. **01370**

**Knurled Screw**



M10 x 20 mm  
Order No. **73750/w** (RAL 9010)  
Order No. **73750**

**Knurled Head Nut**



reduction screw for fastening M10 Pole Mount Adapter (08126)  
Order No. **73755**

**Pole Mount Adapter**



35 mm  $\varnothing$  → M10 x 16 mm, M8 x 20 star knob screw  
Order No. **08126**  
35 mm  $\varnothing$  → M10 x 16 mm  
Order No. **08126/II**

**Steel Safety**



6 mm x 600 mm, black, max. load 22 kg (BGI 810-3), quick connector undetachably  
Order No. **01376/6**

**TV Spigot**



10 mm internal thread, 28 mm  $\varnothing$   
Order No. **08128**

**Ring Screw**



M10– DIN 580  
Order No. **73700** (zincd)  
Order No. **73700/sw** (black zincd)

**Quick Trigger Clamp**



max. load 100 kg  
Order No. **01223/100 kg**

**Quick Trigger Clamp - small**



M10, max. load 20 kg  
Order No. **01223/20 kg**



MultiRigg™light



MultiRigg™



## ACCESSORIES X 4

### Adapter



for X 4, X 6, X 8  
for mounting with Wall Mount (03034),  
incl. 2 x M10 x 20 socket head screws

Order No. **01198/w** (RAL 9010)  
Order No. **01198**

### Wall Mount



2 x M6 fixing holes (d=73 mm),  
1 x M10 fixing hole (center),  
max. load 25 kg

Order No. **03034/w** (RAL 9010)  
Order No. **03034**

### Wall Mount



bar: 269 mm, max. load 40 kg,  
incl. (M10 x 70 mm socket head screw,  
M10 hex lock nut and flat washer)

Order No. **08130/F/269/w** (RAL 9010)  
Order No. **08130/F/269**

### Wall Mount



with tilt unit, max. load 40 kg  
Order No. **08130**

### Cover



for X 4,  
padded  
Order No. **01225/X4**

### Rain Cover



for X 4,  
with zipper  
Order No. **01225/X4/outdoor**

### Flight Case



for 2 pcs. X 4 and 2 pcs. MultiRigg,  
partition walls, heavy duty, 9 mm  
birch multiplex, PVC coated black,  
6 x recessed sprung handles,  
1 x butterfly catch, 4 x 100 mm blue  
wheels (2 pcs. with brake), interior  
lined with felt  
Size (H x W x D): 63 x 61,5 x 59 cm  
Order No. **16560**



Flight Case

Rain Cover