



Das Hochleistungstopteil K 30 eignet sich aufgrund seiner Konstruktion für flexible Anwendungen in Vertikal- und Horizontalausrichtung. Die optimierte Anordnung und Ansteuerung der 2 x 12"/ 1.4" Komponenten sorgt für ein sehr präzises Abstrahl- und Phasenverhalten. Für die Installation kann das universelle MultiRigg™ montiert werden. Das K 30 System ist mit einer passiven Weiche ausgestattet. Zur Anpassung an die Beschallungsaufgabe stehen zwei unterschiedliche Hornvarianten zur Verfügung.

PRODUCT SPECIFICATIONS

| | |
|---|--|
| Speaker Components | 2 x 12" Nd (3,5" VC) / 1,4" Nd (3" VC) |
| Description | High Power HiMid System |
| Power AES / Peak | 1300 W / 4000 W |
| Impedance nominal | 4 Ω |
| SPL 1 W / Peak @ 1 m | 101 dB / 137 dB |
| Usable Range | 70 Hz - 18 kHz (-6 dB) |
| Tuning Frequency excursion minimum | 80 Hz |
| X-Overpoint acoustical | 750 Hz |
| Coverage horizontal / vertical | 90° x 50° (60° x 50°), rotatable |
| Connectors | 2 x Neutrik Speakon Coding: 1 +/- HiMid, 2 +/- thru |
| Handles | 4 x |
| Rigging / Fittings | 10 x M10 for MultiRigg™ 35 mm Pole Mount |
| Weight | 32 kg |
| Size height x width x depth | 77,0 x 36,0 x 46,0 cm |
| Order No. | 01030/90° (90° x 50° Version) 01030/60° (60° x 50° Version) |

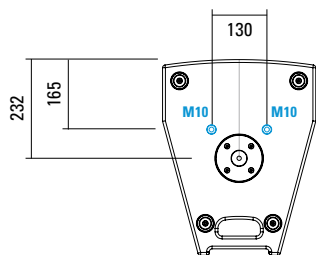


60° Version

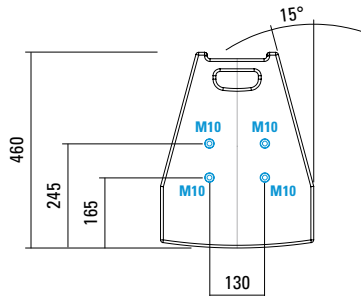
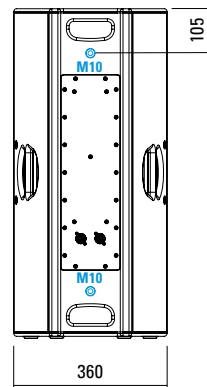
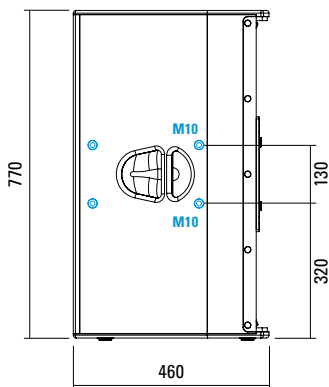
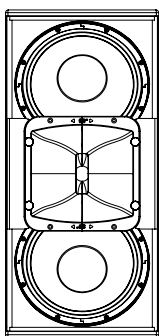
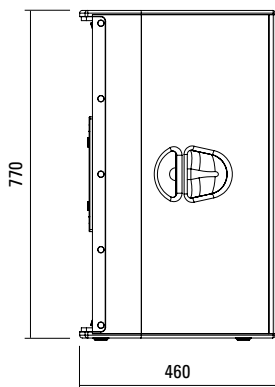


Einfache Installation mit dem universellen MultiRigg™.

DIMENSIONS



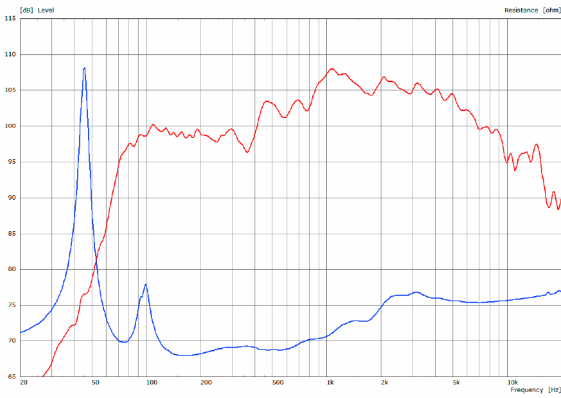
5 x M10 Twinpoints for MultiRigg™



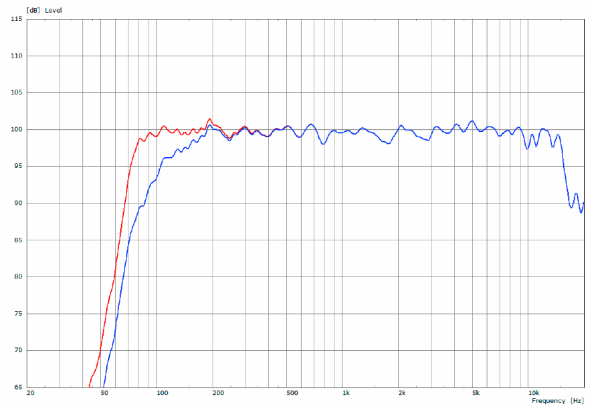
Controller Setups:

<https://www.seeburg.com/de/downloads>

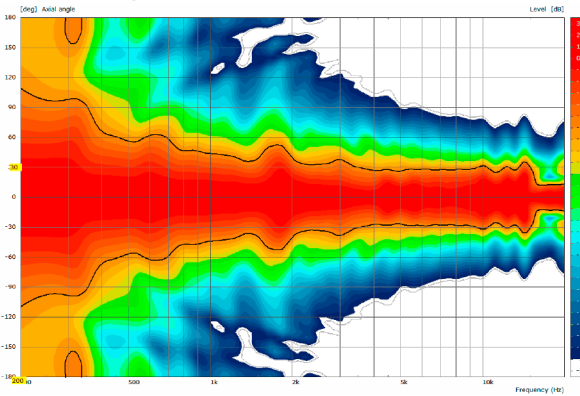
K 30 xov - Sensitivity 1 W @ 1 m + Impedance



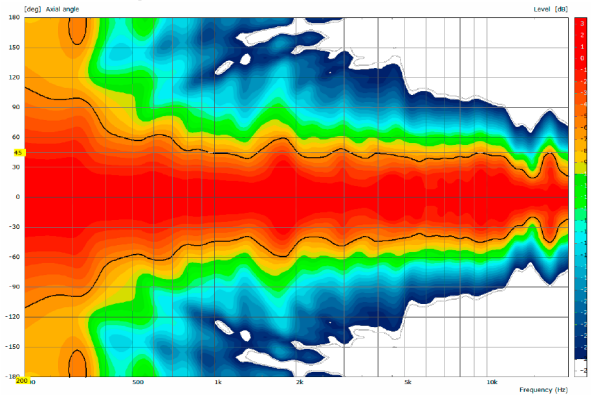
K 30 xov - Frequency Response with DSP Presets



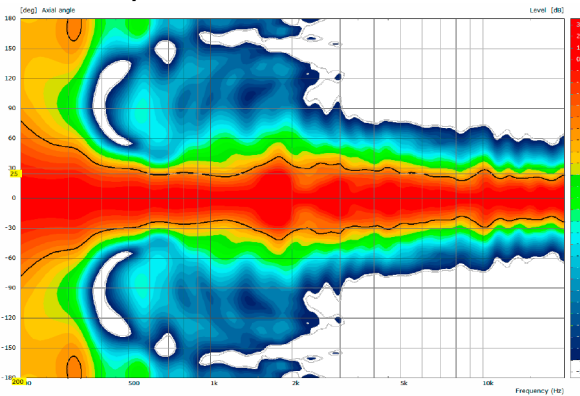
2D Directivity Plot - horizontal - 60° x 50°



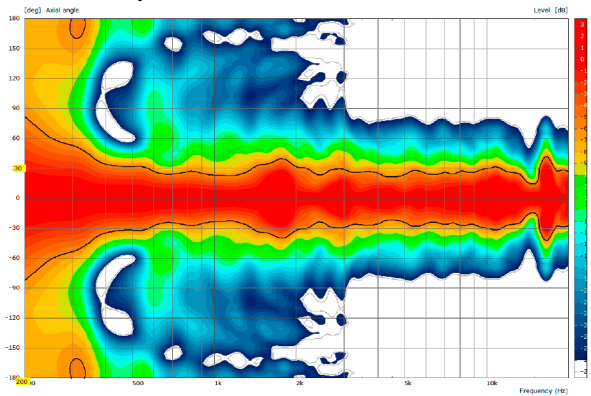
2D Directivity Plot - horizontal - 90° x 50°



2D Directivity Plot - vertikal - 60° x 50°



2D Directivity Plot - vertikal- 90° x 50°



Flying Cradle



to fly one or two K 30 units,
for horizontal or vertical alignment,
(incl. load adapter M10, 4 x knurled
screws M10 x 20 mm)
Order No. **01353**

Connection Kit



to connect two K 30 units,
(6 x knurled screws M10 x 20 mm)
Order No. **08157/K30**

Knurled Screw



M10 x 20 mm
Order No. **73750/w** (RAL 9010)
Order No. **73750**

Knurled Head Nut



reduction screw for fastening
M10 Pole Mount Adapter (08126)
Order No. **73755**

Quick Trigger Clamp



max. load 100 kg
Order No. **01223/100 kg**

Steel Safety



8 mm x 600 mm,
max. load 40 kg (BGI 810-3),
quick connector undetachably
Order No. **01376/8**

Ring Screw



M10– DIN 580
Order No. **73700** (zincd)
Order No. **73700/sw** (black zincd)

TV Spigot



M10 internal thread,
28 mm Ø
Order No. **08128**

Pole Mount Adapter



35 mm ø → M10 x 16 mm,
M8 x 20 star knob screw
Order No. **08126**
Order No. **08126/w** (RAL 9010)

Pole Mount Adapter



35 mm ø → M10 x 16 mm
Order No. **08126/II**
Order No. **08126/II/w** (RAL 9010)

ACCESSORIES K 30

MultiRigg™



for flown and ground stacked applications, (incl. 2 x knurled screws M10 x 20 mm, 1 x handle screw M8 x 55 mm), max. load 50 kg
Order No. **01360**

MultiRigg™ Light



for fixed installations, (incl. 2 x socket head screws M10 x 20 mm), max. load 50 kg
Order No. **01362**

MultiRigg™ Basic



(incl. load adapter M10, 2 x knurled screws M10 x 20 mm), max. load: 50 kg
Order No. **01364**

MultiTilt™



Tilt adapter with adjustable tilt from 0° to 37,5° (2,5° steps), integr. pole mount adapter with clamping device, (incl. 2 x knurled screws M10 x 20 mm), max. load 50 kg
Order No. **01370**

MultiTilt™ Heavy Duty



for Galeo C / C-Series / K 24 / K 30 to be used with FD34 / FD33 truss, minimum truss length: 0,21 m consisting of base plate with M20 and tilt adjuster (incl. socket head screw M20 x 30 mm), weight: 13,5 kg, max. load 150 kg
Order No. **01359** (without traverse)

Wall Mount



bar: 269 mm, (incl. socket head screw M10 x 70 mm, hex lock nut and flat washer M10), max. load 40 kg
Order No. **08130/F/269/w** (RAL 9010)
Order No. **08130/F/269**

Wall Mount



bar: 400 mm, (incl. socket head screw M10 x 70, hex lock nut and flat washer M10), max. load 40 kg
Order No. **08130/F400/w** (RAL 9010)
Order No. **08130/F400**

Bag



for 1 x K 30, with two-way zip, padded, incl. label pocket
Order No. **01234/K30**

Flight Case



for 2 pcs. K 30, mounting option for MultiRigg / MultiTilt in the lid, partition wall, interior lined with felt, PVC coated black, 4 x stacking recesses, 4 x 100 mm blue wheels (2 pcs. with brake)
Size: 80 x 84 x 66 cm (W x D x H), 37 kg
Order No. **16032**

