



Das Hochleistungstopteil K 20 eignet sich aufgrund seiner Konstruktion für flexible Anwendungen in Vertikal- und Horizontalausrichtung. Die optimierte Anordnung und Ansteuerung der 2 x 10"/ 1.4" Komponenten sorgt für ein sehr präzises Abstrahl- und Phasenverhalten. Für die Installation kann das universelle MultiRigg™ montiert werden. Das K 20 System ist mit einer passiven Weiche ausgestattet. Zur Anpassung an die Beschallungsaufgabe stehen zwei unterschiedliche Hornvarianten zur Verfügung.

## PRODUCT SPECIFICATIONS

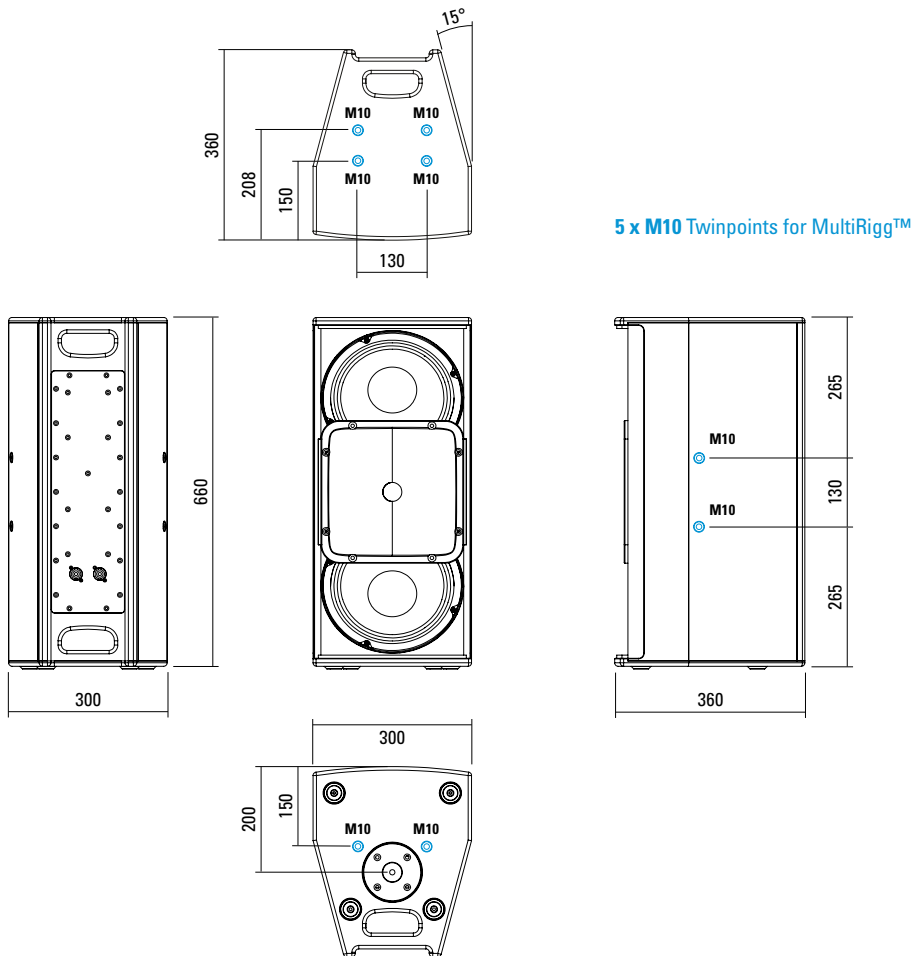
<b>Speaker Components</b>	2 x 10" Nd / 1,4" Nd
<b>Description</b>	High Power HiMid System
<b>Power</b> AES / Peak	800 W / 2400 W
<b>Impedance</b> nominal	4 Ω
<b>SPL</b> 1 W / Peak @ 1 m	100 dB / 134 dB
<b>Usable Range</b>	70 Hz - 18 kHz (-6 dB)
<b>Tuning Frequency</b> excursion minimum	80 Hz
<b>X-Overpoint</b> acoustical	900 Hz
<b>Coverage</b> horizontal / vertical	90° x 60° (60° x 50°), rotatable
<b>Connectors</b>	2 x Speakon NL4MP in/out Coding: 1 +/- HiMid, 2 +/- loop thru
<b>Handles</b>	2 x
<b>Rigging / Fittings</b>	10 x M10 for MultiRigg™ 35 mm Pole Mount
<b>Weight</b>	22,5 kg
<b>Size</b> height x width x depth	66,0 x 30,0 x 36,0 cm
<b>Order No.</b>	<b>01024/90°</b> (90° x 60° Version) <b>01024/60°</b> (60° x 50° Version)



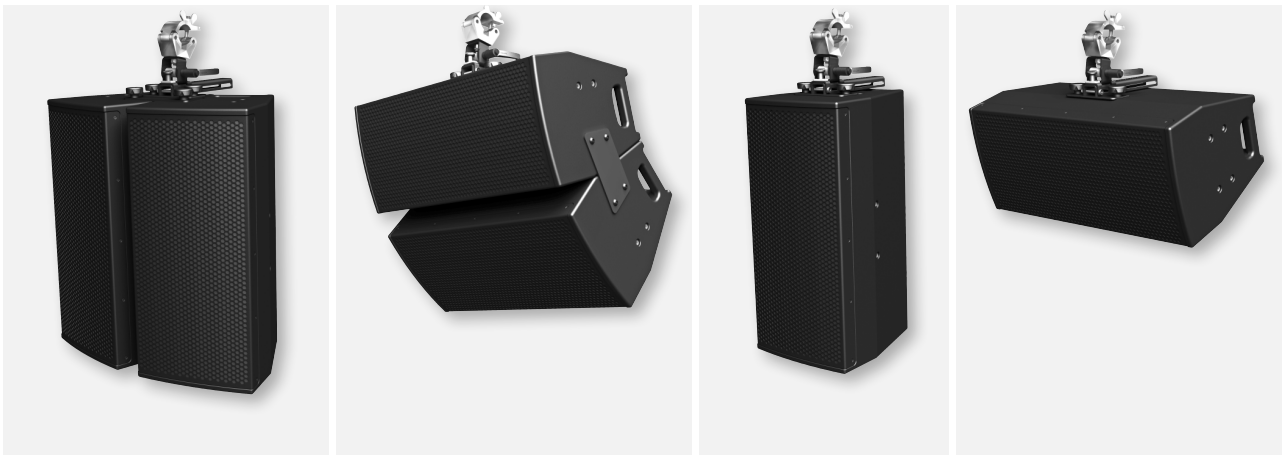
Einfache Installation mit dem universellen MultiRigg™.



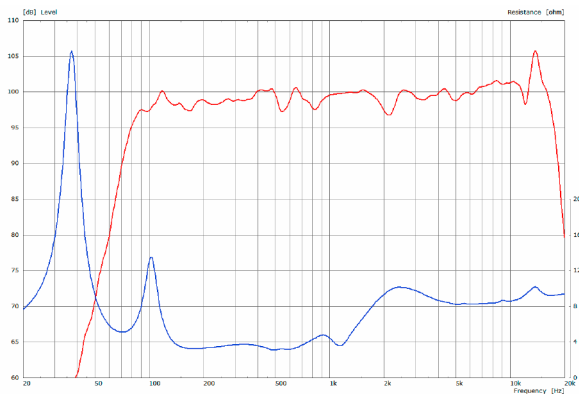
## DIMENSIONS



## APPLICATIONS



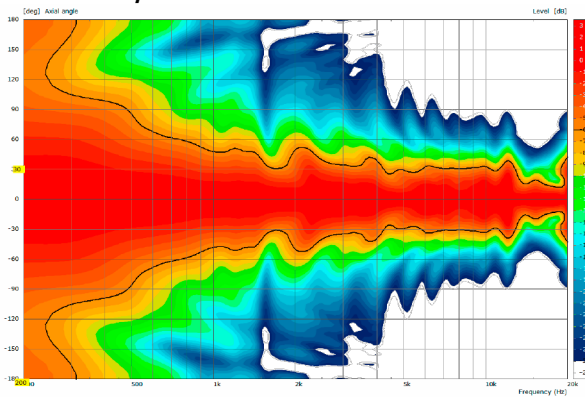
**K 20 - Sensitivity 1 W @ 1 m + Impedance with Preset**



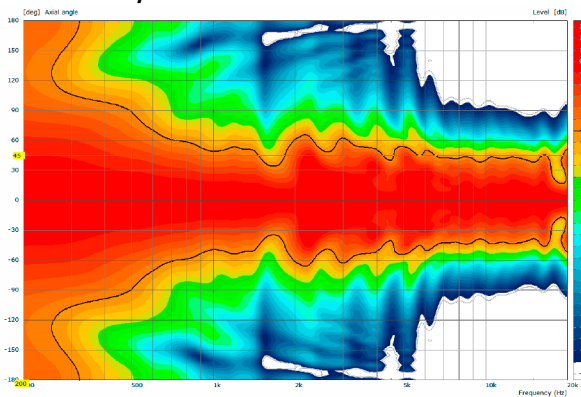
**Controller Setups:**

<https://www.seeburg.com/de/downloads>

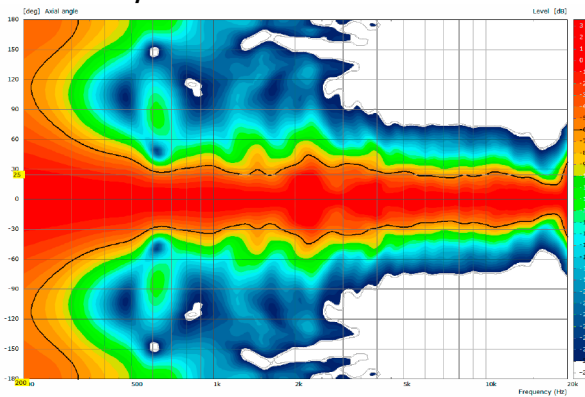
**2D Directivity Plot - horizontal - 60° x 50°**



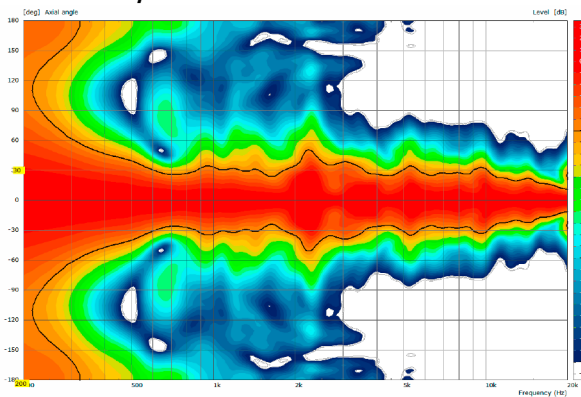
**2D Directivity Plot - horizontal - 90° x 60°**



**2D Directivity Plot - vertikal - 60° x 50°**



**2D Directivity Plot - vertikal - 90° x 60°**





**MultiRigg™**

swiveling fastening solution for horizontal and vertical alignment, for flown / ground stacked / mounted applications, incl. accessories (2 x knurled screws M10 x 20 mm, 1 x handle screw M8 x 55 mm), max. load 50 kg

Order No. **01360**



**MultiRigg™ light**

version for fixed installations, for horizontal and vertical alignment, tiltable vertical angle, incl. accessories (2 x M10 x 20 socket head screws), max. load 50 kg

Order No. **01362**



**MultiTilt™**

Tilt adapter with adjustable tilt from 0° to 37,5° (2,5° steps), integr. pole mount adapter with clamping device, 2 x knurled screws (M10 x 20 mm), max. load 50 kg

Order No. **01370**



**Connector**

K 20 -> K 20, max. load 75 kg incl. (black version: 6 x M10 x 18 mm star knob screws white version: 6 x M10 x 20 mm socket head screws)

Order No. **08157/set/w** (RAL 9010)

Order No. **08157/set**



**Knurled Screw**

M10 x 20 mm

Order No. **73750/w** (RAL 9010)

Order No. **73750**



**Knurled Head Nut**

reduction screw for fastening M10 Pole Mount Adapter (08126)

Order No. **73755**



**Pole Mount Adapter**

35 mm  $\varnothing$  -> M10 x 16 mm, M8 x 20 star knob screw

Order No. **08126**

Order No. **08126/w** (RAL 9010)



**Pole Mount Adapter**

35 mm  $\varnothing$  -> M10 x 16 mm

Order No. **08126/II**

Order No. **08126/II/w** (RAL 9010)



**Steel Safety**

8 mm x 600 mm, max. load 40 kg (BGI 810-3), quick connector undetachably

Order No. **01376/8**



**Ring Screw**

M10- DIN 580

Order No. **73700** (zincd)

Order No. **73700/sw** (black zincd)



**TV Spigot**

10 mm internal thread, 28 mm  $\varnothing$

Order No. **08128**



**Quick Trigger Clamp**

max. load 100 kg

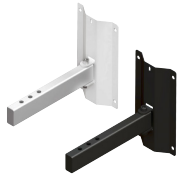
Order No. **01223/100 kg**



MultiRigg™

## ACCESSORIES K 20

### Wall Mount



for U-brackets, max. load 40 kg,  
incl. screws  
(M10 x 70 mm socket head screw,  
M10 hex lock nut and flat washer)  
for 15" speakers

Order No. **08130/F400/w** (RAL 9010)  
Order No. **08130/F400**

### Wall Mount



for U-brackets, max. load 40 kg,  
incl. (M10 x 70 mm socket head screw,  
M10 hex lock nut and flat washer)  
for 8"-12" speakers

Order No. **08130/F/269/w** (RAL 9010)  
Order No. **08130/F/269**

### Speaker Stand



incl. wind up,  
height 138,5 to 218 cm,  
max. load 50 kg

Order No. **03011**

### Rain Cover



for K 20  
Order No. **01253/RC**

### Cover



for K 20, padded  
Order No. **01253**

### Flight Case



for 2 pcs. K 20 and accessories,  
heavy duty, 9 mm birch multiplex,  
PVC coated, 6 x recessed sprung  
handles, 2 x butterfly catches,  
4 x 100 mm blue wheels, 2 pcs. with  
brake, inserts for accessories, interior  
lined with felt.  
Order No. **16031**

