

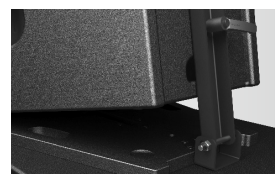
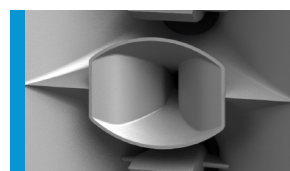


Partial grille option

Das PS 1 ist ein Hochleistungssystem für Clubs, Live-Anwendungen, Installationen in Sportarenen und Freizeitparks. Seine twin-koaxiale Mittel-Hochton-Sektion ermöglicht eine sehr präzise und gleichmäßige Abstrahlung von 80° x 40°. Alle drei Quellen verschmelzen scheinbar zu einer einzigen, mit hervorragender räumlicher Auflösung. Zwei kräftige 12-Zoll Chassis erweitern den Frequenzumfang bis 75 Hz. Das Dreiwege-Design bietet beeindruckende Dynamik bei minimalen Verzerrungen und Verfärbungen. Dank integrierter Frequenzweiche werden nur zwei Verstärkerkanäle benötigt. Ausführung der Hörner, Gitter und Gehäuse in Wunschfarbe möglich.

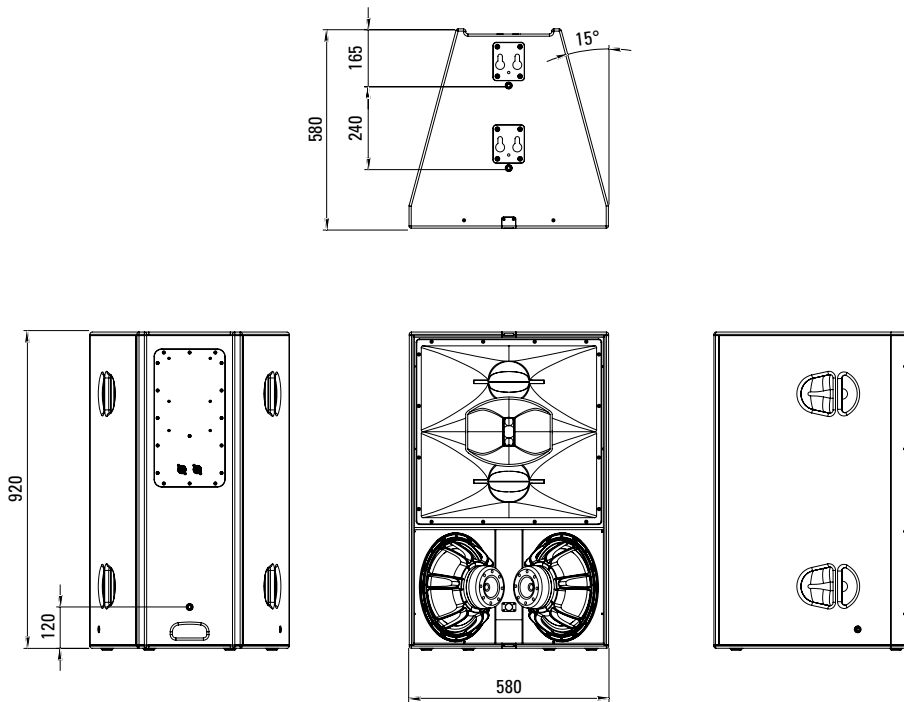
**PRODUCT SPECIFICATIONS**

<b>Speaker Components</b>	2 x 12" / 2 x 6,5" / 1,4" (3" VC)
<b>Description</b>	High Impact Point Source
<b>Power</b> AES / Peak	LF: 1500 W / 4500 W MHF: 300 W / 900 W
<b>Impedance</b> nominal	LF: 4 Ω / MHF: 16 Ω
<b>SPL</b> 1 W / Peak @ 1 m	LF: 101 dB / 138 dB MHF: 108 dB / 138 dB
<b>Usable Range</b>	75 Hz - 20 kHz (-6 dB)
<b>Tuning Frequency</b> Excursion minimum	80 Hz
<b>X - Overpoint</b> acoustical	300 Hz / 1,3 kHz
<b>Coverage</b> horizontal / vertical	80° x 40°
<b>Enclosure Wedge Angle</b>	30°
<b>Connectors</b>	2 x Speakon NL4 in/out Coding: 1 +/- MHF, 2 +/- LF
<b>Handles</b>	5 x
<b>Rigging / Fittings</b>	Cradle plates on top side, tilt bar connection on back side
<b>Weight</b>	54 kg
<b>Size</b> height x width x depth	92,0 x 58,0 x 58,0 cm
<b>Order No.</b>	<b>00780</b>



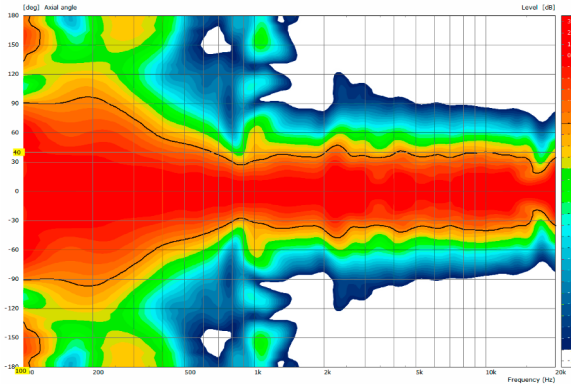
Stacking Board

## DIMENSIONS

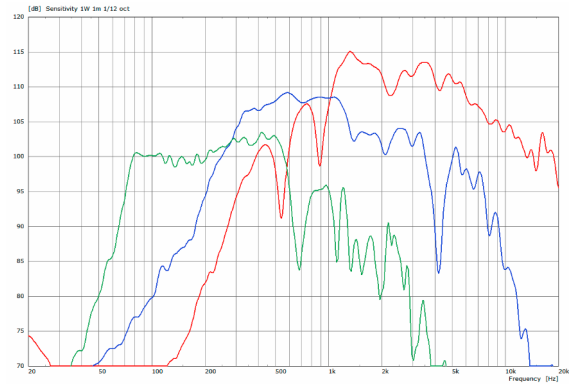


## MEASUREMENTS

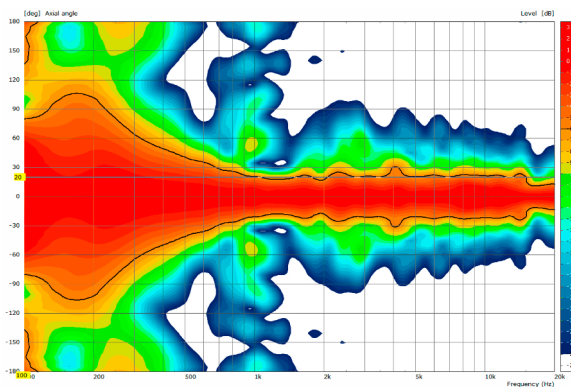
PS 1 - 2D Directivity Plot - horizontal



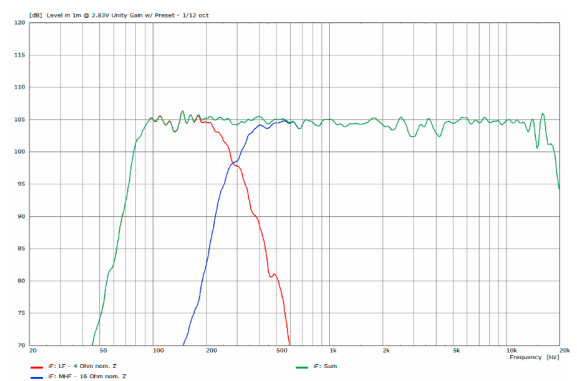
PS 1 - Sensitivity each way @ 1 W nominal input



PS 1 - 2D Directivity Plot - vertical



PS 1 - Frequency Response with 2-way preset



**PS 1 - Base Model**

- Gehäuse Polyurea-beschichtet in schwarz
- Horn Flare in RAL 7004 Signalgrau matt

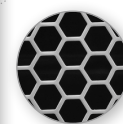


**PS 1 - Partial Grille Option**

- Tieftonsektion mit grobmaschigem Hexagonallochgitter, gebürstetes Edelstahlfinish
- > Optional:
- Pulverbeschichtung in RAL-Ton nach Wahl



Grobmaschiges Hexagonallochgitter



**PS 1 - Full Grille Option**

- Grobmaschiges Hexagonallochgitter, gebürstetes Edelstahlfinish
- > Optional:
- Pulverbeschichtung in RAL-Ton nach Wahl
  - Feinmaschige Lochung und innenliegender Akustikschaum / ohne Akustikschaum



Grobmaschiges Hexagonallochgitter



Feinmaschiges Hexagonallochgitter  
Mit Akustikschaum



Ohne Akustikschaum

**PS 1 - Flare Color Option**

- Komplettes Horn Flare lackiert in RAL-Ton nach Wahl
- > Optional:
- Finish in matt, seidenmatt, glänzend, metallic, Effekt, etc. auf Anfrage



## ACCESSORIES PS 1

### Flying Cradle



tool-free snap-in assembly,  
incl. accessories  
(1 x load adapter M10,  
1 x ball lock pin 8 x 25 mm)  
Order No. **01356**

### Stacking Board



fits: PS Sub,  
incl. accessories (1 x handle screw  
M10 x 20)  
Order No. **01395**

### Ball Lock Pin



for PS 1  
Order No. **01380/8x25** (8 x 25 mm)

### Handle Screw



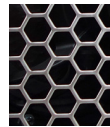
adjustable,  
M10 x 20  
Order No. **08375/20**

### Load Adapter M10

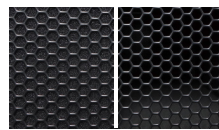


for Galeo C / Galeo C Sub / PS 1  
flying cradle  
Order No. **01328**

### Full Grille Option

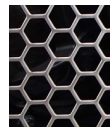


Grille with wide-meshed  
hexagonal perforation  
> brushed stainless steel finish  
Order No. **97290/stainless steel**



Grille with fine-meshed  
hexagonal perforation  
> with foam on inside  
Order No. **97290/black/foam**  
> without foam  
Order No. **97290/black**

### Partial Grille Option



Grille with wide-meshed  
hexagonal perforation for the  
low-frequency section  
> brushed stainless steel finish  
Order No. **97295/stainless steel**

### Wheel Board



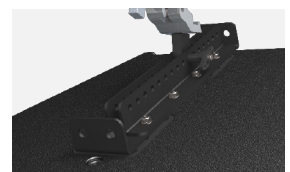
for PS 1  
Order No. **01264/PS1**



Wheel Board



Stacking Board



Flying Cradle