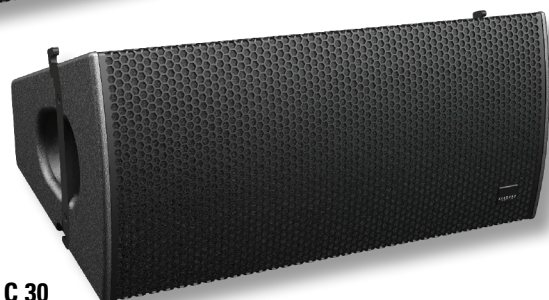


Constant Curvature Array Units **C 15 / C 30**



C 15

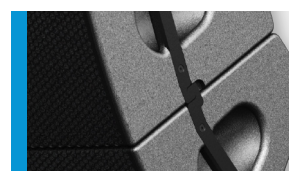


C 30

Das C 15 und C 30 System vereint als "Constant Curvature Array" die Vorzüge von Punktquellenlautsprechern mit der Performance von Line Arrays. Die vertikale Abstrahlung wird durch die Addition der einzelnen C-Serie Komponenten definiert. Mit dem C 15 und C 30 System stehen Winkel von 15° bzw. 30° zur Verfügung. Damit lassen sich mit relativ wenigen Elementen auch größere Hörerflächen sehr präzise und gleichmäßig beschallen. Die Anwendungen liegen im Bereich Theater, Stadien, Clubbeschallung und mittlerer Open Air Konzerte.

PRODUCT SPECIFICATIONS

	C 15	C 30
Speaker Components	2 x 10" Nd (3" VC) 3 x 1" Nd (1,7" VC)	2 x 10" Nd (3" VC) 3 x 1" Nd (1,7" VC)
Description	Constant Curvature Array Units	
Power <small>AES / Peak</small>	800 W / 2400 W	800 W / 2400 W
Impedance <small>nominal</small>	8 Ω	8 Ω
SPL <small>1 W / Peak @ 1m</small>	100 dB / 134 dB	100 dB / 134 dB
Usable Range <small>-6 dB</small>	70 Hz - 20 kHz	70 Hz - 20 kHz
Tuning Frequency <small>excursion minimum</small>	80 Hz	80 Hz
X-Overpoint <small>acoustical</small>	800 Hz	800 Hz
Coverage <small>horizontal x vertical</small>	90° x 15°	90° x 30°
Max. Splay Angle	15°	30°
Connectors	2 x Speakon NL4MP in/out, Coding: 1+/- HiMid, 2+/- loop thru	2 x Speakon NL4MP in/out, Coding: 1+/- HiMid, 2+/- loop thru
Handles	2 x	2 x
Rigging / Fittings	Integrated flying hardware, 8 x M10 for MultiRigg™/ MultiTilt™	Integrated flying hardware, 8 x M10 for MultiRigg™/ MultiTilt™
Weight	25 kg	23,5 kg
Size <small>height x width x depth</small>	32,0 x 70,0 x 38,0 cm	32,0 x 70,0 x 38,2 cm
Order No.	00470	00472



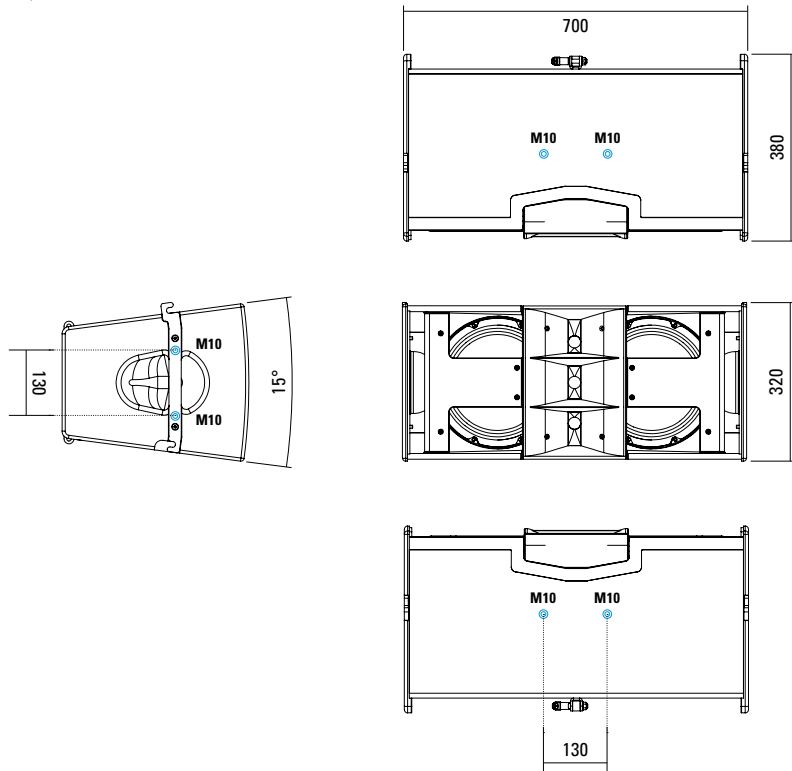
Integrierte Flugmechanik



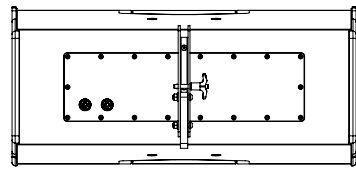
MultiRigg™ Hardware

DIMENSIONS

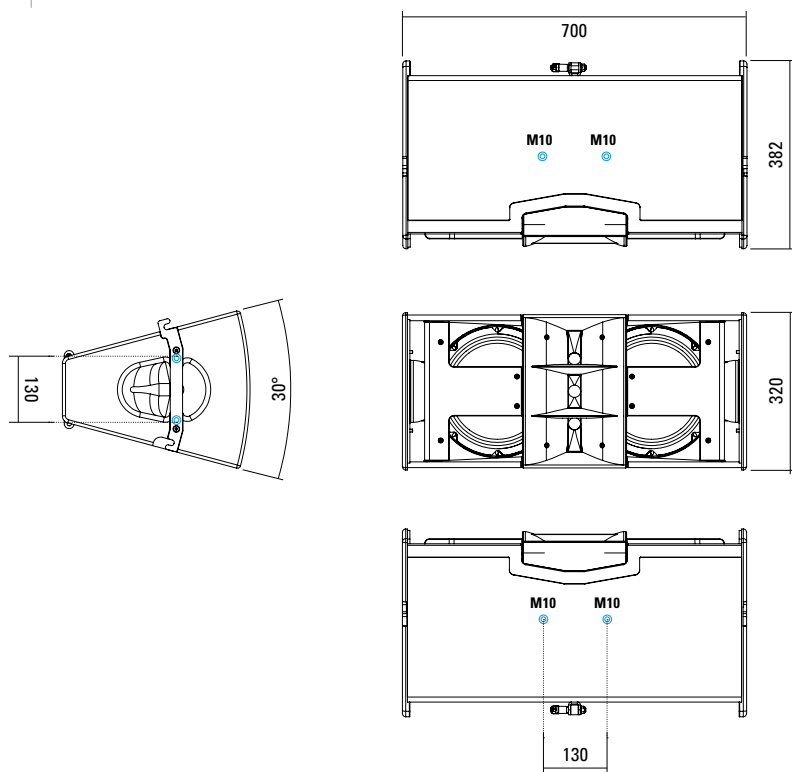
C 15



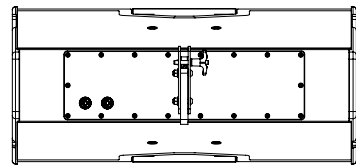
8 x M10 Twinpoints für MultiRigg™ / MultiTilt™



C 30

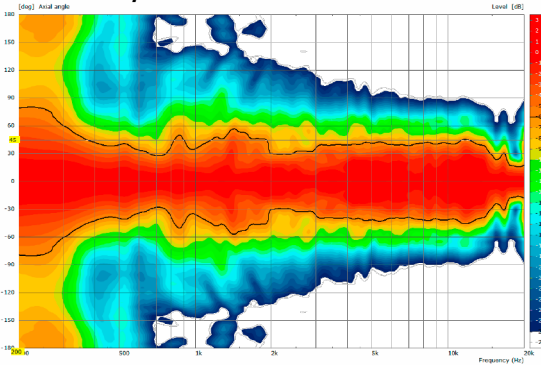


8 x M10 Twinpoints für MultiRigg™ / MultiTilt™

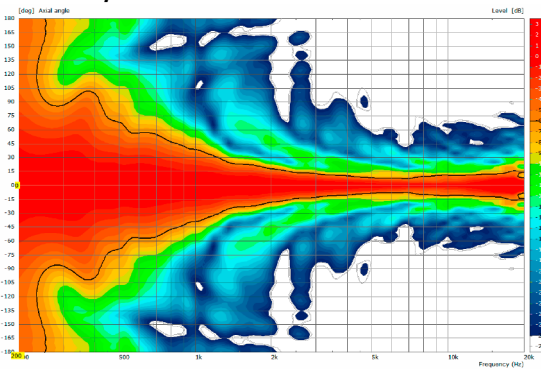


C 15

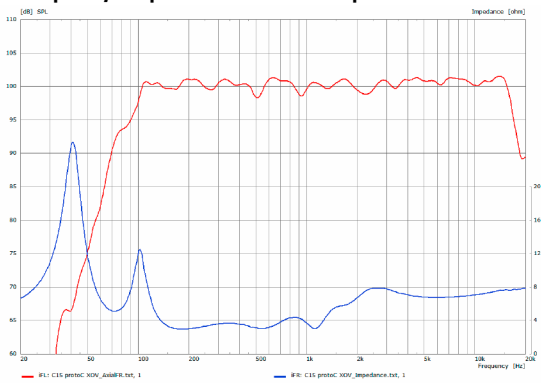
2D Directivity Plot - horizontal



Directivity Plot - vertical

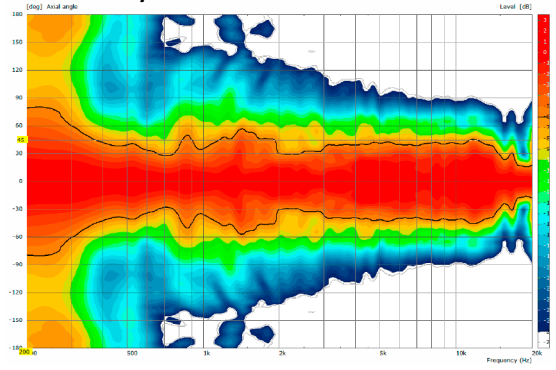


Frequency Response with Preset + Impedanz

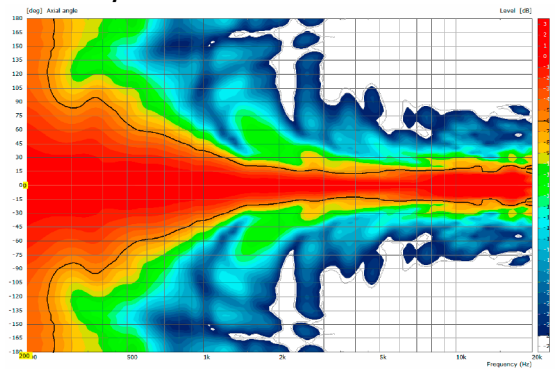


C 30

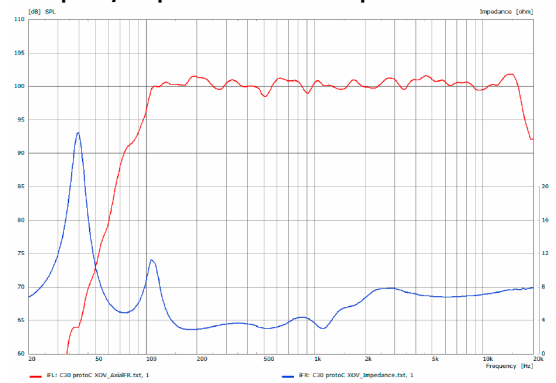
2D Directivity Plot - horizontal

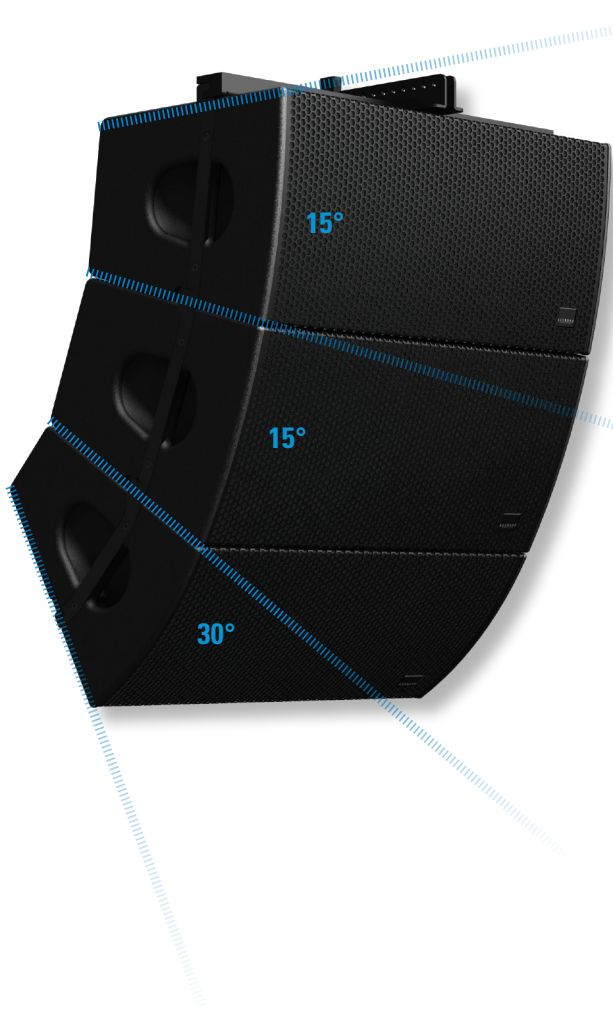


Directivity Plot - vertical



Frequency Response with Preset + Impedanz

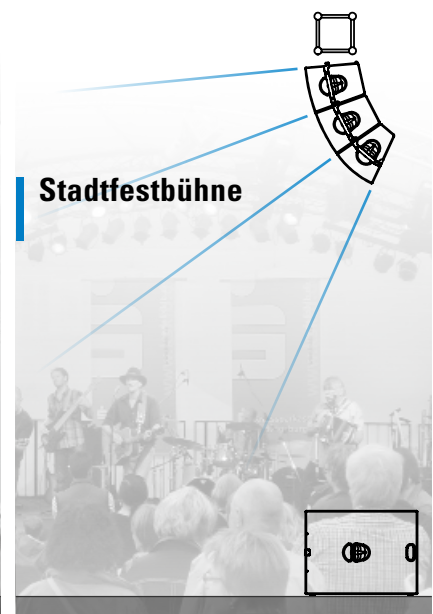
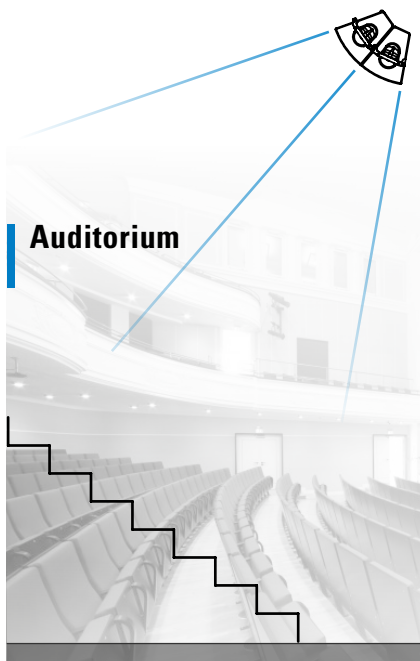




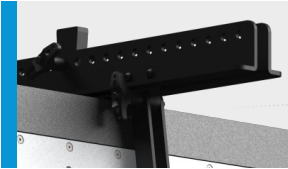
Constant Curvature

C 15 (15°) - C 30 (30°)

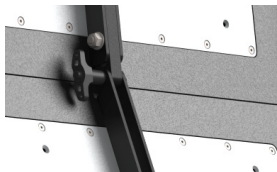
- Volle Skalierbarkeit
- Hochpräzise Schallabstrahlung
- Kompaktes Erscheinungsbild
- Hohe Leistung



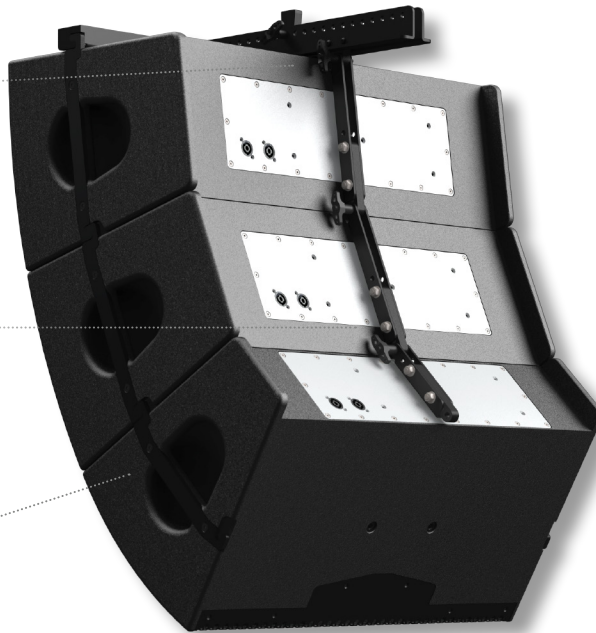
FLYING SYSTEM



Flying Cradle



Integrierte Flugmechanik



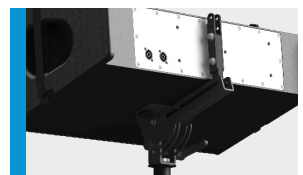
APPLICATIONS



C 30 / Galeo C Sub
MultiRigg™



C 15 + C 30 / C Sub
Flying Cradle



MultiRigg™ Hardware



MultiRigg™

swiveling fastening solution for horizontal and vertical alignment, for flown / ground stacked / mounted applications, incl. accessories (2 x knurled screws M10 x 20 mm, 1 x handle screw M8 x 55 mm), max. load 50 kg
Order No. **01360**



MultiRigg™ light

version for fixed installations, for horizontal and vertical alignment, tiltable vertical angle, incl. accessories (2 x M10 x 20 socket head screws), max. load 50 kg
Order No. **01362**



MultiTilt™

Tilt adapter with adjustable tilt from 0° to 37,5° (2,5° steps), integr. pole mount adapter with clamping device, 2 x knurled screws (M10 x 20 mm), max. load 50 kg
Order No. **01370**



Flying Cradle

for C 15 / C 30, max. load 140 kg
Order No. **01357**



Ring Screw

M10– DIN 580
Order No. **73700** (zincd)
Order No. **73700/sw** (black zincd)



TV Spigot

10 mm internal thread, 28 mm Ø
Order No. **08128**



Speaker Pole

250 mm, ø 35 mm, M20, with ring lock
Order No. **03020**



Pole Mount Adapter

35 mm ø → M10 x 16 mm, M8 x 20 star knob screw
Order No. **08126**
Order No. **08126/w** (RAL 9010)



Pole Mount Adapter

35 mm ø → M10 x 16 mm
Order No. **08126/II**
Order No. **08126/II/w** (RAL 9010)



Knurled Screw

M10 x 20 mm
Order No. **73750/w** (RAL 9010)
Order No. **73750**



Knurled Head Nut

reduction screw for fastening M10 Pole Mount Adapter (08126)
Order No. **73755**



Quick Trigger Clamp

max. load 100 kg
Order No. **01223/100 kg**



Steel Safety

8 mm x 600 mm, max. load 40 kg (BGI 810-3), quick connector undetachably
Order No. **01376/8**

ACCESSORIES C 15 / C 30

Wall Mount



bar: 269 mm, max. load 40 kg,
incl. (M10 x 70 mm socket head screw,
M10 hex lock nut and flat washer)

Order No. **08130/F/269/w** (RAL 9010)

Order No. **08130/F/269**

Wall Mount



bar: 400 mm, max. load 40 kg,
incl. (M10 x 70 mm socket head screw,
M10 hex lock nut and flat washer)

Order No. **08130/F/400/w** (RAL 9010)

Order No. **08130/F/400**

Flight Case



for 2 pcs. C 15 or C 30,
mounting option for 2 x MultiRigg
or MultiTilt, 100 mm wheels.

Size: 80 x 45,5 x 90 cm (w x d x h),
weight: 34 kg

Order No. **16600**

