



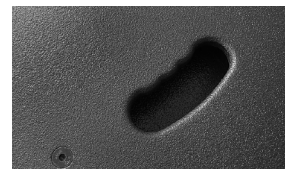
**Multifunktionales 10" Nd/1" System mit ausgewogenen Klangeigenschaften im kompakten Format. Geringes Gewicht durch Neodym-Bestückung. Gute Basswiedergabe auch ohne Controller. Diverse M8 und M10 Aufnahmepunkte sorgen für die einfache Montage des Zubehörs. Auch als Festinstallationsvariante lieferbar.**

## PRODUCT SPECIFICATIONS

<b>Speaker Components</b>	10" Nd / 1"
<b>Description</b>	Multi Purpose Sound System
<b>Power</b> AES / Peak	300 W / 900 W
<b>Impedance</b> nominal	8 Ω
<b>SPL</b> 1 W / Peak @ 1 m	95 dB / 123 dB
<b>Usable Range</b>	60 Hz - 20 kHz (-6 dB)
<b>Tuning Frequency</b> Excursion minimum	65 Hz
<b>X - Overpoint</b> acoustical	1,6 kHz
<b>Coverage</b> horizontal / vertical	90° x 60° - rotatable
<b>Connectors</b>	2 x Speakon NL4MP in/out Coding: 1 +/- HiMid, 2 +/- loop thru
<b>Handles</b>	1 x
<b>Rigging / Fittings</b>	2 x M10 / 7 x M8 4 x M10 / 7 x M8 (installation version) 35 mm pole mount
<b>Weight</b>	13 kg
<b>Size</b> height x width x depth	51,5 x 32,4 x 30,6 cm
<b>Order No.</b>	<b>00250/II</b> <b>00250/AF/II</b> (installation version)



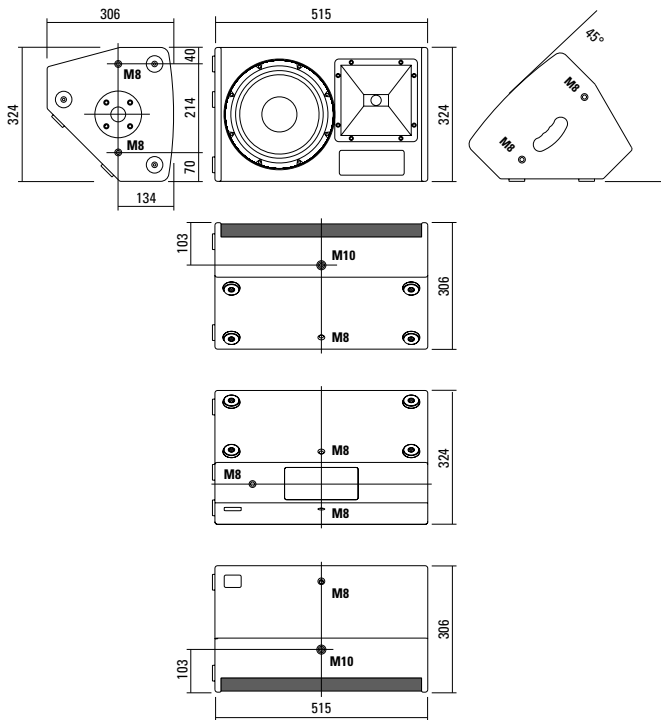
Der hochbelastbare 1" Treiber, in Kombination mit dem drehbaren Horn, sorgt für eine hohe klangliche Präzision.



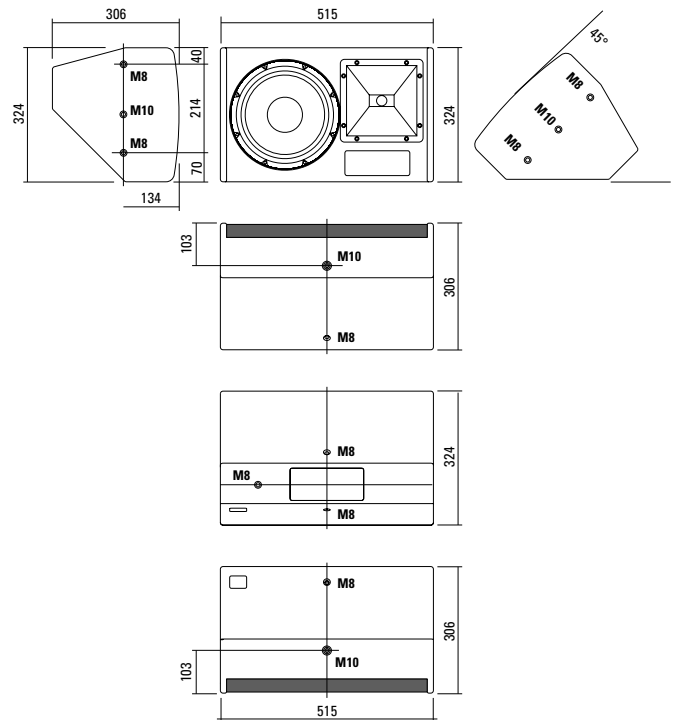
Ergonomischer Griff auf der Oberseite.



## DIMENSIONS



## Installation Version AF 4

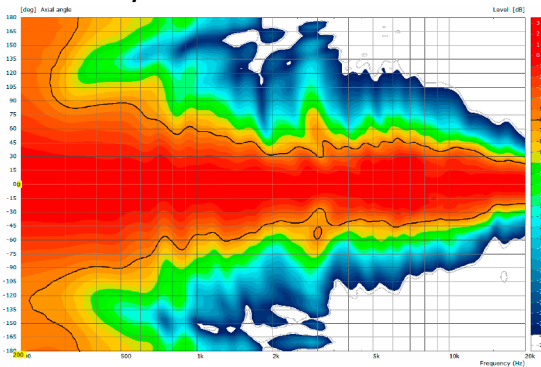


## Controller Setups:

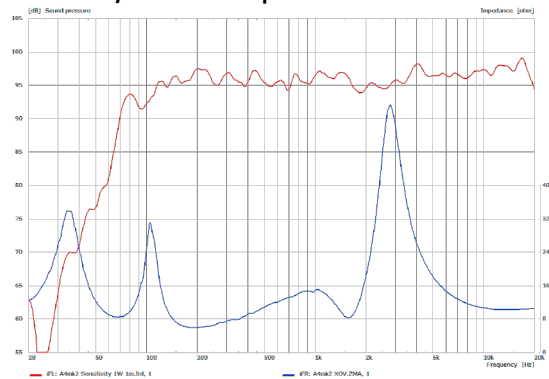
<https://www.seeburg.com/de/downloads>

## MEASUREMENTS

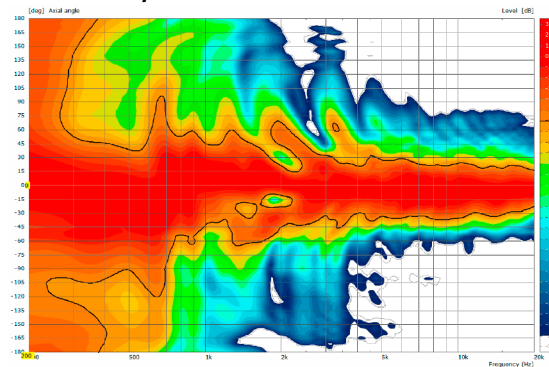
### 2D Directivity Plot - horizontal



### Sensitivity 1 W @ 1 m + Impedance



### 2D Directivity Plot - vertical



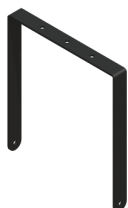
**Flying Bracket**



for A 4 / TSM 10 horizontal alignment, incl. accessories

Order No. **01220/H/set/w** (RAL 9010)  
Order No. **01220/H/set**

**Flying Bracket**



for A 4 / TSM 10  
incl. (black version: 2 x M10 x 20 handle screws, 2 x rubber washers  
white version: 2 x M10 x 20 socket head screws, 2 x rubber washers)

Order No. **01220/set/w** (RAL 9010)  
Order No. **01220/set**

**Flying Bracket**



for AF 4 horizontal alignment, incl. (2 x M10 x 20 socket head screws, 2 x rubber washers)

Order No. **01220/H/AF4/w** (RAL 9010)  
Order No. **01220/H/AF4**

**Handle Screw**



for flying brackets, adjustable

Order No. **08375/20** (M10 x 20)

**Rubber Washer**



for flying brackets, 5 mm x 40 mm Ø

Order No. **01206**

**Knurled Head Nut**



reduction screw for fastening M10 Pole Mount Adapter (08126)

Order No. **73755**

**Pole Mount Adapter**



35 mm Ø → M10 x 16 mm, M8 x 20 star knob screw

Order No. **08126**

35 mm Ø → M10 x 16 mm

Order No. **08126/II**

**Flange**



with ball and socket joint, with additional locking screw, M10 x 15, max. load 15 kg

Order No. **08125**

**MultiRigg™**



swiveling fastening solution for horizontal and vertical alignment, for flown / ground stacked / mounted applications, incl. accessories (2 x knurled screws M10 x 20 mm, 1 x handle screw M8 x 55 mm), max. load 50 kg

Order No. **01360**

**Adapter**



for MultiRigg™/MultiRigg™ light for mounting on M10, incl. 1 x M10 x 25 mm screw, max. load 20 kg

Order No. **01358**

**TV Spigot**



10 mm internal thread, 28 mm Ø

Order No. **08128**

**Quick Trigger Clamp**



max. load 100 kg

Order No. **01223/100 kg**

**Quick Trigger Clamp - small**



M10, max. load 20 kg

Order No. **01223/20 kg**

**Truss Clamp**



incl. M10 Adapter, max. load 15 kg

Order No. **01221**

**Steel Safety**



6 mm x 600 mm, black, max. load 22 kg (BGI 810-3), quick connector undetachably

Order No. **01376/6**



Adapter > MultiRigg™ > M10

## ACCESSORIES A 4

### Wall Mount



bar: 269 mm, max. load 40 kg,  
incl. (M10 x 70 mm socket head screw,  
M10 hex lock nut and flat washer)

Order No. **08130/F/269/w** (RAL 9010)  
Order No. **08130/F/269**

### Wall Mount



with tilt unit, max. load 40 kg  
Order No. **08130**

### Cover



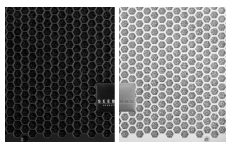
for A 4 / TSM 10,  
padded  
Order No. **01242**

### Rain Cover



for A 4 / TSM 10  
Order No. **01242/outdoor**

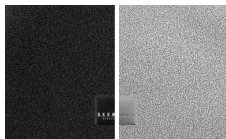
### Honeycomb Grilles



for A 4 front replacement.

Foam behind grille

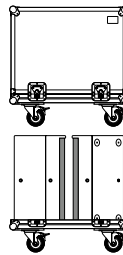
Order No. **97008/hex/compl**  
Order No. **97008/hex/compl/w**  
(RAL 9010)



Foam in front of grille

Order No. **97008/compl**  
Order No. **97008/compl/w**  
(RAL 9010)

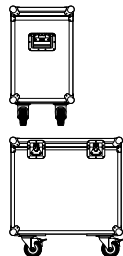
### Flight Case



for 2 pcs. TSM 10 / A 4,  
heavy duty, 9 mm birch multiplex,  
PVC coated, 2 x recessed sprung  
handles, 4 x butterfly catches,  
4 x 100 mm blue wheels, 2 pcs. with  
brake, interior lined with felt.

Order No. **16049**

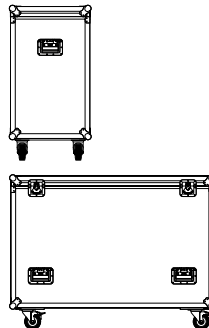
### Flight Case Trunk



for 2 pcs. TSM 10 / A 4  
and accessories, heavy duty,  
9 mm birch multiplex, PVC coated,  
hinged lid, 6 x recessed sprung handles,  
2 x butterfly catches, 4 x 100 mm blue  
wheels, 2 pcs. with brake, interior lined  
with felt.

Order No. **16060**

### Flight Case Trunk



for 4 pcs. TSM 10 / A 4  
with flying brackets 01220,  
heavy duty, 9 mm birch multiplex,  
PVC coated, 6 x recessed sprung  
handles, 2 x butterfly catches,  
4 x 100 mm blue wheels, 2 pcs. with  
brake, interior lined with felt.

Order No. **16063**

