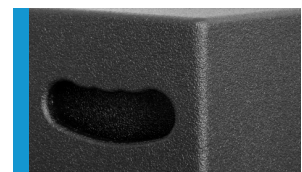




Unauffälliges und elegantes System für die Festinstallation und Industriepresentation. Die klassische 2 x 6,5" / 1" Treiber Bestückung sorgt für gute Sprachverständlichkeit, Transparenz und Reichweite. Vier M10 Aufnahme- punkte (optional fünf bei Austausch gegen die werkseitig montierte HS- Flanschbuchse) ermöglichen in Kombination mit dem Zubehör eine einfache Installation in Horizontal- und Vertikalausrichtung.

PRODUCT SPECIFICATIONS

Speaker Components	2 x 6,5" Nd / 1"
Description	HiMid Sound System
Power AES / Peak	400 W / 1200 W
Impedance nominal	16 Ω (4 Ω optional)
SPL 1 W / Peak @ 1 m	95 dB / 126 dB
Usable Range	75 Hz - 19 kHz (-10 dB)
Tuning Frequency excursion minimum	91 Hz
X - Overpoint acoustical	2,5 kHz
Coverage horizontal / vertical	90° x 60° - rotatable
Max. Splay Angle	- - -
Connectors	2 x Neutrik Speakon NL4MP in/out Coding: 1 +/- HiMid, 2 +/- loop thru
Handles	1 x
Rigging / Fittings	4 x M10 35 mm pole mount
Weight	9,5 kg
Size height x width x depth	51,0 x 21,0 x 21,0 cm
Order No.	00230/16/II 00230/16/TR/II (with 100 V transformer)



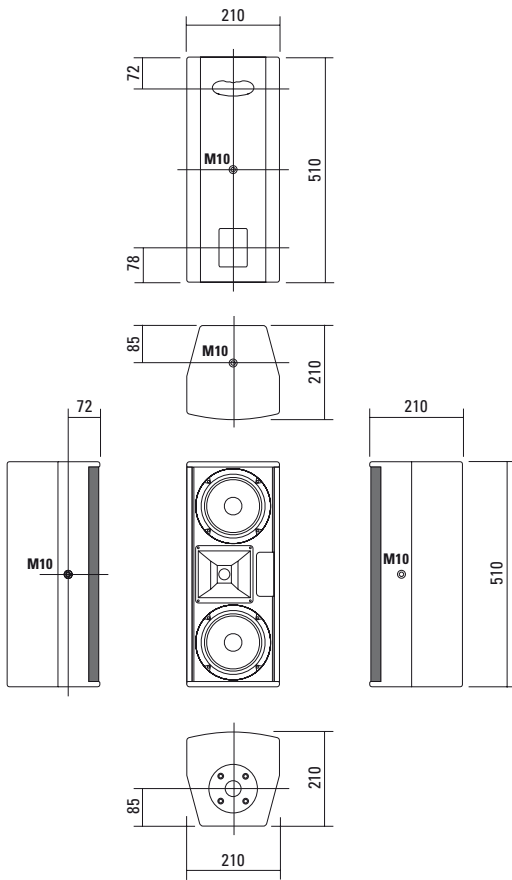
Ergonomisch geformte Griffausfräsung in der Rückwand für den bequemen Transport.



Anschlussfeld



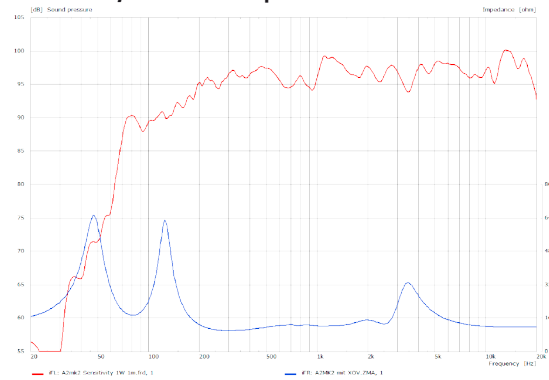
DIMENSIONS



Controller Setups:

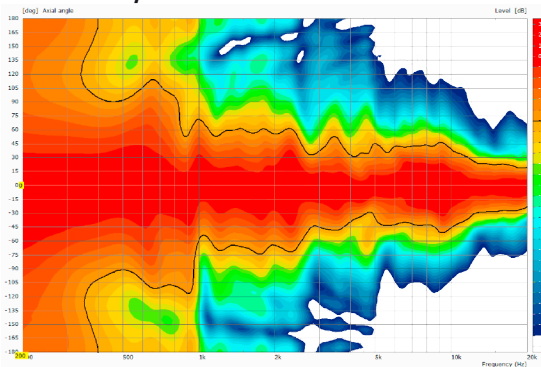
<https://www.seeburg.com/de/downloads>

Sensitivity 1 W @ 1 m + Impedance

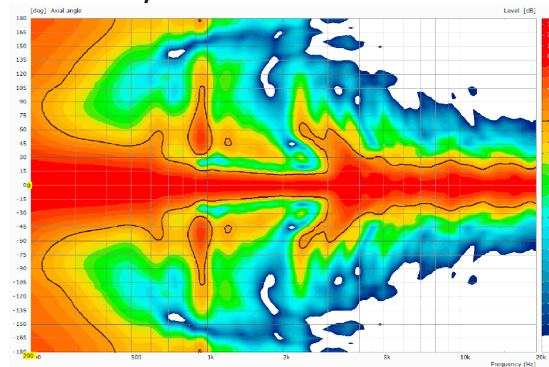


COVERAGE PATTERNS

2D Directivity Plot - horizontal



2D Directivity Plot - vertical





Flying Bracket

for A 2,
horizontal alignment, incl. screws
(per unit: 2 pcs. M10 x 20 socket head
screws, spring- and rubber washers)
Order No. **01214/H/set**



Flying Bracket

for A 2,
incl. screws
(per unit: 2 pcs. M10 x 20 ergostyle
lobe knob and rubber washers)
Order No. **01214/set**



Ergostyle Lobe Knob

for flying brackets, M10 x20,
with grip, adjustable
Order No. **08171**



Plate

for A 2 / A 3 flying brackets,
horizontal alignment,
replacement for pole mount flange,
110 mm Ø flange with M10 nut
Order No. **08119/M10**



Flange

for flying brackets,
35 mm Ø → M10,
Order No. **08126**



Flange

with ball and socket joint,
with additional locking screw,
M10 x 15, max. load 15 kg
Order No. **08125**



Truss Clamp

incl. M10 Adapter,
max. load 15 kg
Order No. **01221**



Doughty Quick Trigger Clamp

max. load 250 kg
Order No. **01223**



Steel Safety

4 mm x 600 mm, black,
max. load 10 kg (BGI 810-3),
quick connector undetachably
Order No. **01376/4**



Rubber Washer

for flying brackets,
40 mm
Order No. **01205**



Chain Fastener

VBS 7 mm
Order No. **01378**



Ring Screw

M10– DIN 580
Order No. **73700**



TV Spigot

10 mm internal thread,
28 mm Ø
Order No. **08128**



Flying Bracket

ACCESSORIES A 2

Wall Mount



with ball joint flange (08125)
Order No. **08125/plate**

Wall Mount



for U-brackets, max. load 40 kg,
incl. screws
(M10 x 70 mm socket head screw,
M10 hex lock nut and flat washer)
for 8"-12" speakers
Order No. **08130/F/269**

Wall Mount



with tilt unit, max. load 40 kg
Order No. **08130**

Wall Mount



M10, max. load 15 kg, with stargrip
Order No. **08131**
Order No. **08131/W** (white)



For permanent installation,
incl. tilt angle stop
Order No. **08131/F**
Order No. **08131/F/W** (white)

Wall Mount



2 x M6 fixing holes (d=73 mm),
1 x M10 fixing hole (center),
max. load 25 kg
Order No. **03034**

Spacer



for Wall Mount (03034)
polyurea coated
Order No. **03034/spc**

Speaker Stand



K&M, incl. wind up,
height 138,5 to 218 cm,
max. load 50 kg,
Order No. **03011**

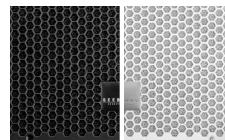
K&M, height 137,5 to 218,5 cm,
max. load 50 kg,
Order No. **03010**

Bag



for A 2, padded
Order No. **01243**

Honeycomb Grilles

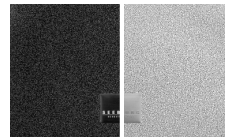


for A2 front replacement.

Foam behind grille

Order No. **97004/hex/compl**

Order No. **97004/hex/compl/w** (white)



Foam in front of grille

Order No. **97004/compl.**

Order No. **97004/compl/w** (white)



Spacer -> Wall Mount