

Bass Extension - digitally powered **K Sub 1801 dp**



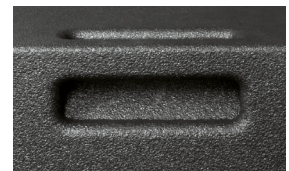
The K Sub 1801 is a compact high-power subwoofer for universal use in the frequency range of 33 Hz to 140 Hz. The classic bass reflex design with streamlined ports leads to an exceptional precise and deep bass response with medium throw. Two ergonomically designed handles ensure perfect handling. For transportation, a wheelboard can be mounted to the front side. The integrated amplifier electronics deliver 2400 watts (AES) and are based on Class D power amplifiers, which are controlled via particularly low-noise FPGA DSP processing. Various factory-configured presets and volume settings can be called up. Remote monitoring and control is carried out via the Ethernet interface using SEEBURG Network Manager. Signal transmission (AoE) in accordance with the AES 67 standard is also possible.

PRODUCT SPECIFICATIONS

Speaker Components	18" (4" VC)
Description	Digitally Powered Bass Extension
Amp Power	2400 W AES @ 4 Ω
Rated Current	4,2 A @ 230 V
SPL <small>Peak @ 1 m</small>	137 dB
Max. Input Signal	25 dBu
DSP	DPLMx FPGA Processing 32 bit floating point
AD / DA	24 bit / 96 kHz
Latency	0.8 ms (analog in to analog out)
Usable Range <small>- 6 dB</small>	33 Hz - 100 / 120 / 140 Hz
Tuning Frequency <small>excursion minimum</small>	38 Hz
Connectors	XLR in/thru, Ethercon, Speakon NL4MP out, Powercon in/thru
Handles	4 x
Rigging / Fittings	M20 on top and side Wheel board fittings
Weight	45,0 kg (+7,0 kg wheel board)
Size <small>height x width x depth</small>	69,8 x 51,2 x 56,0 cm
Order No.	01060/dp



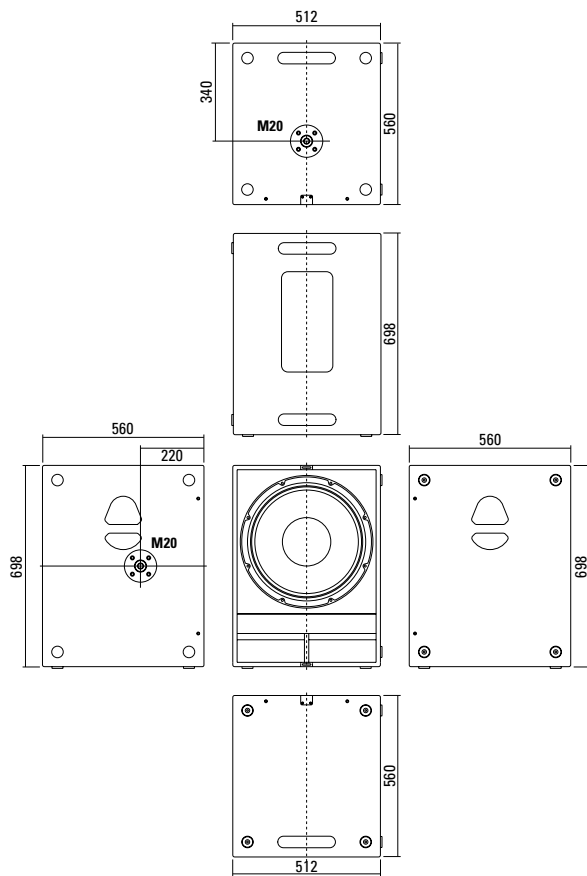
Robust front grille.



Four convenient bar handles at the corner.

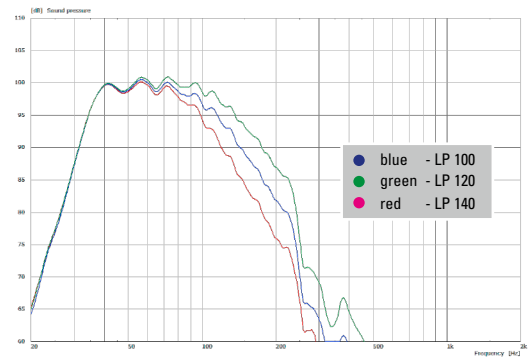


DIMENSIONS

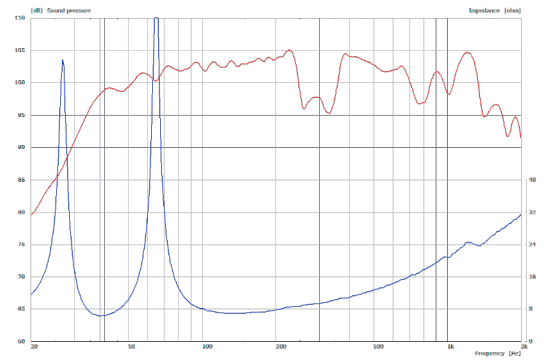


MEASUREMENT

Frequency Response with Presets



Sensitivity 1 W @ 1 m + Impedance



APPLICATIONS



2 x K Sub 1801 / K 24



K Sub 1801 / GL 24



3 x K Sub 1801 dp
Cardioid set-up

The K Sub 1801 dp features integrated digital amplifier electronics with a DSP controller (dp = digitally powered). Various factory-configured presets and volume settings can be called up directly on the box or via a network connection.

High-grade electronic components from the industrial sector and a first-class circuit design ensure excellent audio quality with low distortion and a minimal noise floor. Highly efficient and “intelligent” limiter systems ensure optimum protection against overload, without restricting the possibilities offered by this high-performance sound system.

 [Presets > Quick Start Manual](#)

Level

Adjustment in 3 dB steps (-12 dB to +6 dB).

Status

Mute LED

Red light when the system is muted or under technically critical conditions.

Limit LED

Yellow light when the limiter is restricting the level.

Signal LED

Green light when the input signal exceeds -20 dBu

Power LED

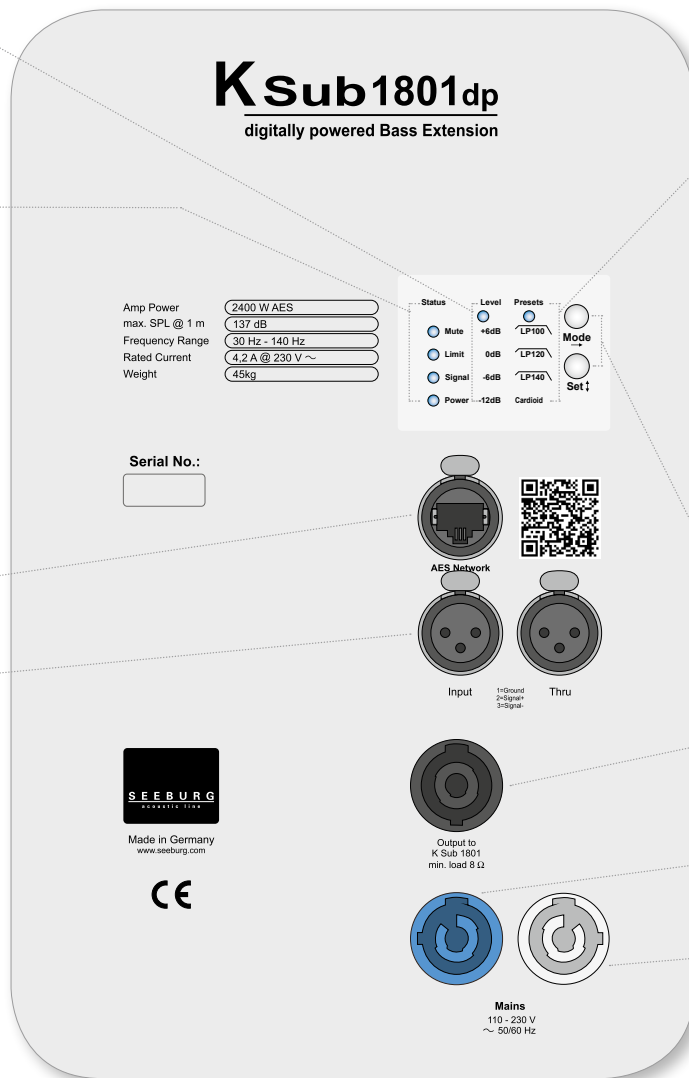
Green light when the system is switched on.

Ethercon

Interface for remote control and audio transfer via ethernet (AES 67).

XLR

- Symmetrical analog input.
- Effective filter protection against HF interference and DC Voltages.
- Virtual ground lift.



Presets

LP 100

Low Pass filter with 100 Hz cutoff frequency.

LP 120

Low Pass filter with 120 Hz cutoff frequency.

LP 140

Low Pass filter with 140 Hz cutoff frequency.

Cardioid mode

For directional bass reproduction in conjunction with an additional subwoofer. This mode is applied only to the rear-facing sub. The level reduction to the rear can be up to 20 dB, depending on the actual physical setup and the frequency.

Mode - key

Switches between control modes Status, Level and Presets.

Set - key

Setting of various values and Mute on / off.

Speakon NL4MP

Parallel output connector for a passive K Sub 1801 with an 8 Ω impedance.

Powercon (blue)

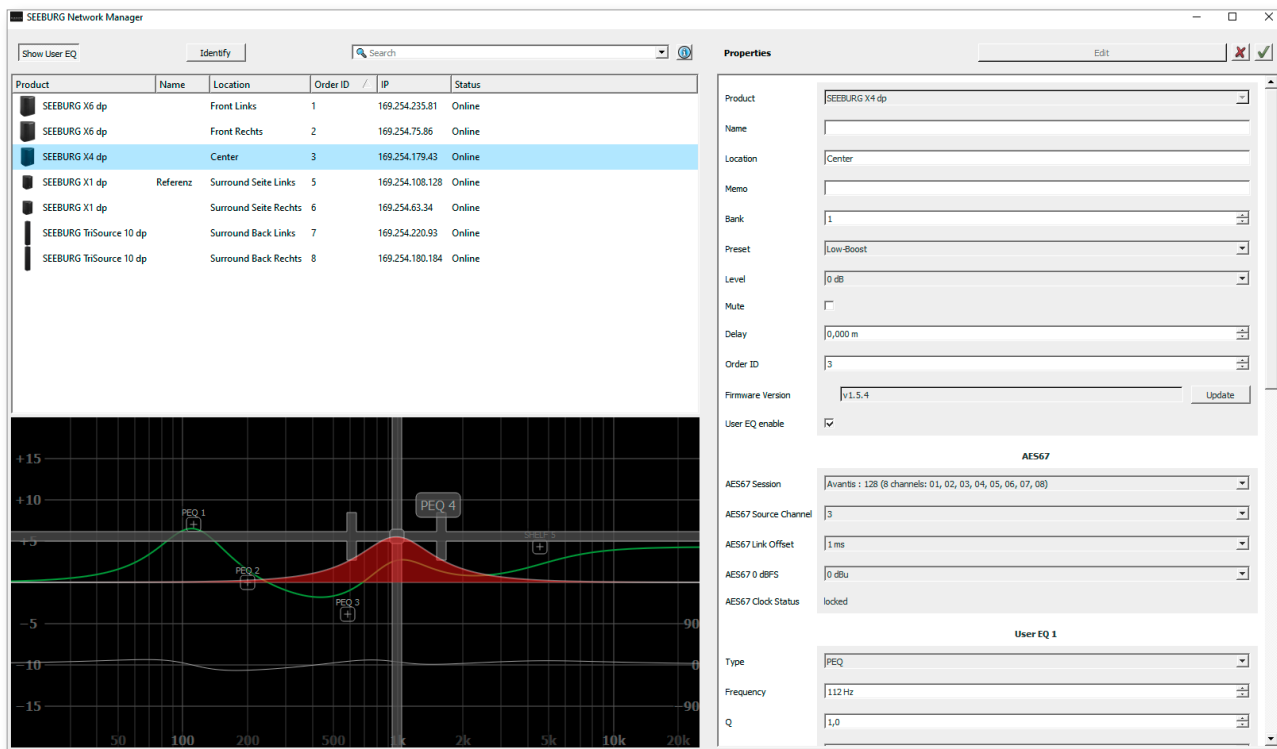
Power supply ~ 110-230 V / 16 A max.

Powercon (grey)

~ 110-230 V / 16 A max. loop through connector

SEEBURG NETWORK Manager

With the Software SEEBURG Network Manager all selfpowered systems can be controlled via network.



Features:

- > **Remote control** of functions such as recalling presets and banks, level control and mute, and locking the controls on the loudspeakers.
- > **Visual display** of all systems connected to the control network.
- > Storable names and location labels with a **global search function**.
- > **Selection of loudspeakers** in the list for simultaneous set-up and control changes.
- > **Fully parametric user EQs and delay settings** for time alignment, with a graphical user interface
- > **Time Delay** with up to **2.8 seconds runtime**.
- > **Audio-over-Ethernet (AoE) via AES 67.**
- > Connection with **media control systems** via **API**.
- > Basic **network settings**.
- > **Documentation** is available **online**.
- > **Identification function** by way of flashing LEDs on the dp loudspeaker systems.
- > **Firmware updates** can be applied.



 [SEEBURG Network Manager > Quick Start Manual \(pdf\)](#)

AES NETWORK interface

All selfpowered systems are equipped as standard with an **AES Network interface**.

This is used for **remote control** via the **SEEBURG Network Manager** and for **Audio-over-Ethernet (AoE) audio transmission** via **AES 67**.



AES Network

ACCESSORIES K Sub 1801 dp

Speaker Pole



250 mm, ø 35 mm, M20,
with ring lock

Order No. **03020**

Speaker Pole



M20, with wind up

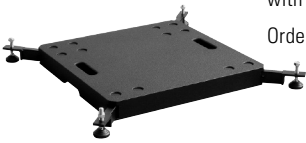
Order No. **03023**



M20, adjustable

Order No. **03022**

Ground Stacking Board



for K Sub 1801 / G Sub
with extendable legs

Order No. **01394**

Wheel Board



for G Sub / K Sub 1801,
stackable, 7 kg

Order No. **01260**

Cover



for K Sub 1801 with wheel board

Order No. **01257**

Hybrid Cable System



PowerCon-PowerCon / XLR-XLR

5 m Order No. **08464**

10 m Order No. **08466**

15 m Order No. **08468**

