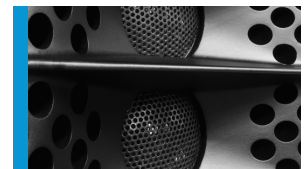




High-performance line array systems for optimised speech and music reproduction in acoustically challenging rooms. The precise, broadband sound bundling to a nominal 20° (50°-GL 24 j-version) vertical dispersion is achieved through the acoustic coupling of two slightly curved line arrays, arranged one behind the other within the cabinet. This innovative arrangement is complemented by the horn guide in the high frequency range to ensure an exceptionally homogeneous and symmetrical 100° horizontal dispersion. The GL 24 system is particularly suitable for individual applications up to a distance of 25 metres, and can also be used as a downfill under the GL 16i. In the standard version, the GL 24 is a 2-way active system with separate amplifiers and controller. The xov-version includes a passive crossover, and can be operated with a single amplifier channel.

## PRODUCT SPECIFICATIONS

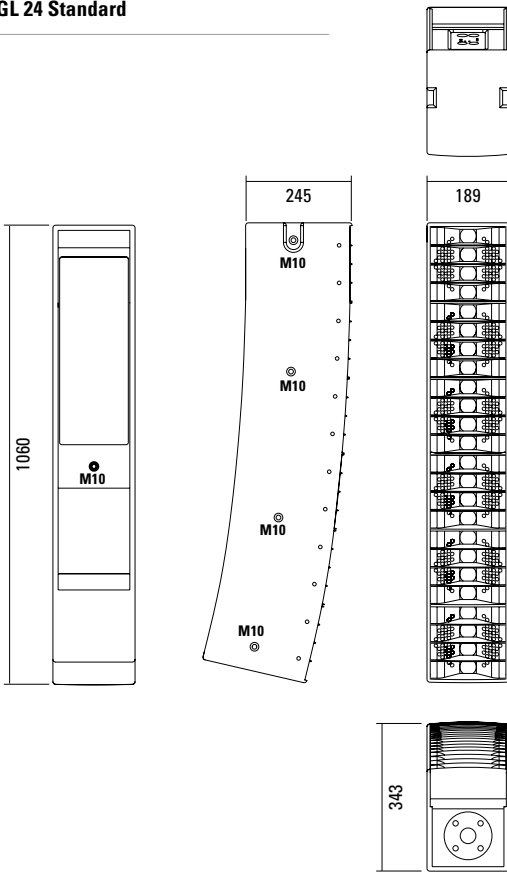
	GL 24 a	GL 24 xov
<b>Speaker Components</b>	6 x 6,5" Nd / 24 x 1" Nd Tweeter	6 x 6,5" Nd / 24 x 1" Nd Tweeter
<b>Description</b>	Cylindric Wave Radiator	Cylindric Wave Radiator
<b>Power</b> <small>AES / Peak</small>	LF: 600 W / 1800 W HF: 225 W / 675 W	600 W / 1800 W
<b>Impedance</b> <small>nominal</small>	5,3 Ω / 5,3 Ω	5,3 Ω
<b>SPL</b> <small>1 W / Peak @ 1 m</small>	LF: > 98 dB / 130 dB HF: > 99 / 127 dB	> 130 dB
<b>Usable Range</b>	80 Hz - 20 kHz (-6 dB)	80 Hz - 20 kHz (-6 dB)
<b>Tuning Frequency</b> <small>excursion minimum</small>	90 Hz	90 Hz
<b>X - Overpoint</b> <small>acoustical</small>	Depends on preset	1,1 kHz
<b>Coverage</b> <small>horizontal / vertical</small>	100° x 20° - degressive curved 100° x 50° - j-curved (GL 24 j)	100° x 20° - degressive curved 100° x 50° - j-curved (GL 24 j)
<b>Mechanical Splay Angle</b>	13° 43° (GL 24 j)	13° 43° (GL 24 j)
<b>Connectors</b>	2 x Speakon NL4MP in/out Coding: 1 +/- HF, 2 +/- LF	2 x Speakon NL4MP in/out Coding: 1 +/- HiMid, 2 +/- loop thru
<b>Rigging / Fittings</b>	9 x M10 (GL 24 / GL 24 j) 35 mm pole mount (GL 24 )	9 x M10 (GL 24 / GL 24 j) 35 mm pole mount (GL 24 )
<b>Weight</b>	20,5 kg	21 kg
<b>Size</b> <small>height x width x depth (cm)</small>	106,0 x 18,9 x 34,3 (24,5) 100,6 x 18,9 x 52,0 (24,5) (GL 24 j)	106,0 x 18,9 x 34,3 (24,5) 100,6 x 18,9 x 52,0 (24,5) (GL 24 j)
<b>Order No.</b>	<b>00520/a</b> <b>00520/j/a</b> (GL 24 j)	<b>00520/xov</b> <b>00520/j/xov</b> (GL 24 j)



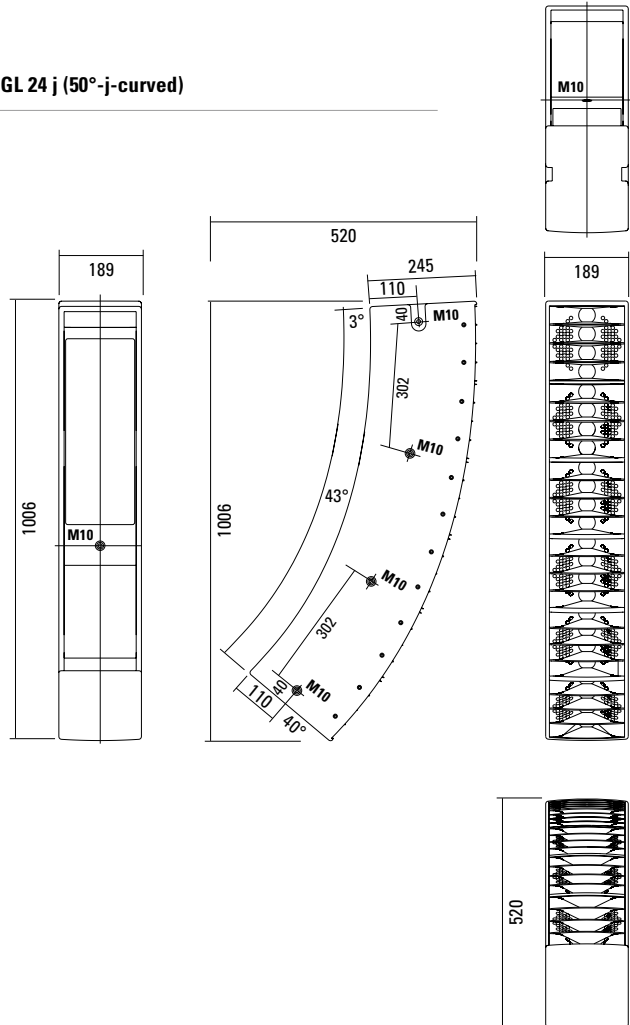
GL 24 j (50°-j-curved-version)

# DIMENSIONS

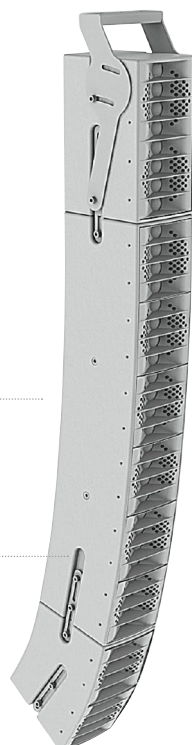
## GL 24 Standard



## GL 24 j (50°-j-curved)



## GL 24 Full Version (Extra)



GL 8 i

GL 24 Full Version

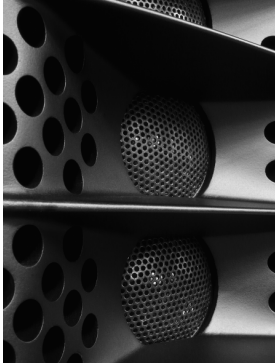
**Continuous internal steel frame**  
with integrated M10 threads.

**Fitting with elongated holes**  
for connecting two systems together.



GL 8 c

## AMR® PRINCIPLE

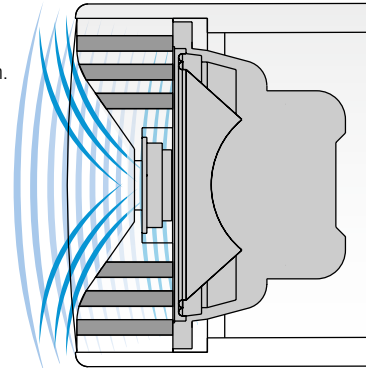


### AMR® Principle.\*

The AMR horn contains integrated channels which allow the sound waves generated by the low-mid speakers mounted behind the horn to pass through.

For sound waves in the frequency range generated by the 1" HF driver, these channels behave as if they were sealed due to the air mass inside the channels acting as a reflector (AMR = Air Mass Reflection).

The low-mid speakers are coupled to an acoustical band pass filter with a center frequency close to the crossover frequency between the Mid and HF drivers. This construction provides smooth horizontal dispersion over a wide frequency range. Another asset is the extreme compactness of this design.



\*patentrechtlich geschützt

### Controller Setups:

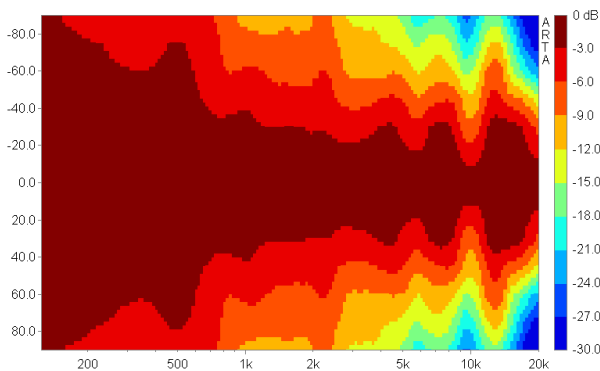


<https://www.seeburg.net/en/downloads>

## COVERAGE PATTERNS

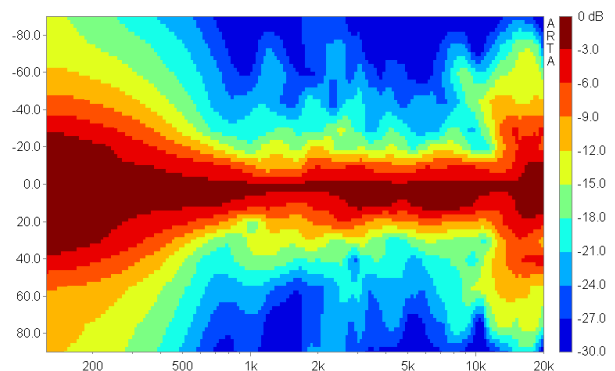
### GL 24 horizontal - 2D Directivity Plot

100° horizontal dispersion for good performance in wide venues.



### GL 24 vertikal - 2D Directivity Plot

The j-curving leads to an unsymmetrical vertical dispersion, narrower in the upper section for long throw and wider in the lower section for near field.



## APPLICATIONS



**2 x GL 16 i / GL 24**  
For applications up to 80 m distance.



**GL 8 i / GL 24**



**GL 8 i / GL 24 j**



**GL 8 i / GL 24 j / GL 8 c**



Flying Cradle



Integrated 35 mm pole mount.



Flying Bracket



**GL 24 / G Sub 1501**  
For applications up to 25 m distance.



**GL 16 i / GL 24 / G Sub 1801**  
For applications up to 40 m distance.



**GL 24 / 2 x GL 16 Sub**

**Flying Cradle**



for GL System,  
max. load 120 kg,  
incl. shackle (01372/GL)  
Order No. **01354**

**Flying Bracket**



GL 24 / GL 24 j,  
incl. (black version: 4 x M10 x 20  
handle screws, 1 x knurled head nut,  
white version: 4 x M10 x 20 socket  
head screws 1 x knurled head nut)  
Order No. **01352/GL24/set/w** (RAL 9010)  
Order No. **01352/GL24/set**

**Handle Screw**



for flying brackets, adjustable  
Order No. **08375/20** (M10 x 20)  
Order No. **08375/30** (M10 x 30)

**Clamping Bar**



for flying bracket GL 24 / GL 24 j,  
for stronger angling  
Order No. **01352/clamp**

**Connection Bar**



GL 24 standard version → GL 8 c  
for Downfill,  
a pair, incl. accessories  
Order No. **08159**

**Pole Mount Adapter - M20**



for flying bracket,  
M20 x 35 mm with nut,  
incl. 1 x M20 x 30 socket head screw,  
1 x flat  
Order No. **08127/nut**

**Quick Trigger TV Clamp**



Max. load 200 kg  
Order No. **01223/TV**

**Quick Trigger Clamp**



max. load 100 kg  
Order No. **01223/100 kg**

**TV Adapter**



M20 external thread,  
28 mm Ø  
Order No. **08128/M20**

**Shackle**



for GL flying cradle,  
max. load 1000 kg  
Order No. **01372/GL**

**Ring Screw**



M10– DIN 580  
Order No. **73700** (zincd)  
Order No. **73700/sw** (black zincd)

**Steel Safety**



6 mm x 600 mm, black,  
max. load 22 kg (BGI 810-3),  
quick connector undetachably  
Order No. **01376/6**

**Chain Fastener**



VBS 7 mm  
Order No. **01378**



TV Adapter -> Flying Bracket



Clamping Bar



Spacer

## ACCESSORIES GL 24

### Wall Mount



2 x M6 fixing holes (d=73 mm),  
1 x M10 fixing hole (center),  
max. load 25 kg  
Order No. **03034/w** (RAL 9010)  
Order No. **03034**

### Spacer



for wall mount (03034),  
M10 x 55 (screw),  
polyurea coated  
Order No. **03034/spc**

### Wall Mount



for U-brackets, max. load 40 kg,  
incl. screws  
(M10 x 70 mm socket head screw,  
M10 hex lock nut and flat washer)  
400 mm  
Order No. **08130/F400/w** (RAL 9010)  
Order No. **08130/F400**  
269 mm  
Order No. **08130/F/269/w** (RAL 9010)  
Order No. **08130/F/269**

### Speaker Stand



K&M, incl. wind up,  
height 138,5 to 218 cm,  
max. load 50 kg  
Order No. **03011**  
K&M, height 137,5 to 218,5 cm,  
max. load 50 kg  
Order No. **03010**

### Stretch Cover



for GL 24 / GL 24 j  
Order No. **01233/stretch/black**  
Order No. **01233/stretch/grey**  
Order No. **01233/stretch/white**

### Rain Cover



for GL 24, incl. low lid,  
connectable to other covers of the  
GL-system  
Order No. **01233/outdoor/2**

### Bag



for one unit GL 24  
Order No. **01233**

### Flight Case



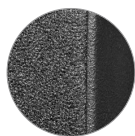
for 2 pcs. GL 24 units,  
and accessories, heavy duty, 9 mm  
birch multiplex, PVC coated, hinged lid,  
8 x recessed sprung handles,  
2 x butterfly catches, 4 x 100 mm blue  
wheels, 2 pcs. with brake, stackable,  
inserts for accessories, interior lined  
with felt, loading measurements,  
Size (H x W x D): 48,0 x 115,5 x 61,0 cm  
Order No. **16013/pro/T**

## EXTRAS



### Grille on Front

Order No. **01179/GL 24**



### Acoustic Foam on Front

Order No. **01178/GL 24**



### Full Version

Integrated Flying Frame with  
connecting bars  
Order No. **01177/GL 24**



### Colour Selection

RAL 9010, Pure White  
Order No. **01199/GL 24**