

Multi Purpose Sound System - digitally powered **A 6 dp**



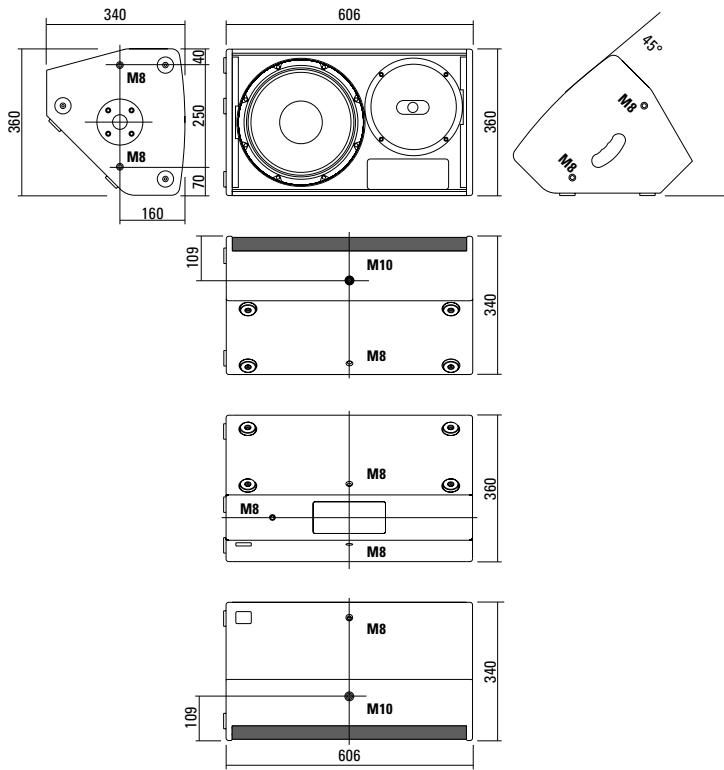
The A 6 dp is a top class multifunctional high powered loudspeaker system. The A 6 dp is as equally well suited to use as a full range / high mid PA loudspeaker as it is to monitor applications. The rotatable 1" DPC (= Dual Pattern Control) horn maintains its 90° x 60° dispersion over a wide frequency range. Multiple M8 and M10 mounting points provide for simple installation. The integrated amplifier electronics deliver 500/150 watts (AES) and are based on Class D power amplifiers, which are controlled via particularly low-noise FPGA DSP processing. Various factory-configured presets and volume settings can be called up. Remote monitoring and control is carried out via the Ethernet interface using SEEBURG Network Manager. Signal transmission (AoE) in accordance with the AES 67 standard is also possible.

PRODUCT SPECIFICATIONS

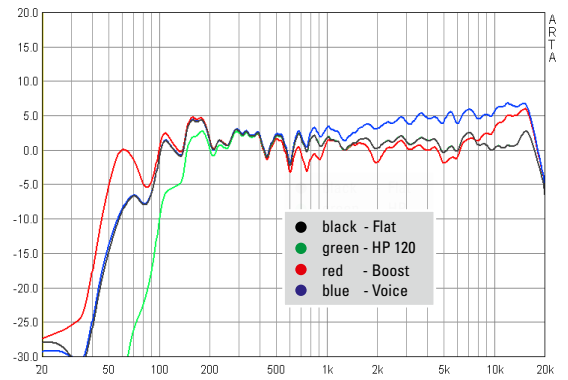
Speaker Components	12" Nd / 1"
Description	Multi Purpose Sound System
Amp Power	LF: 500 W AES / 110-230 V HF: 150 W AES / 110-230 V
Rated Current	0,55 A @ 230 V
SPL <small>Peak @ 1 m</small>	128 dB
Max. Input Signal	25 dBu
DSP	DPLMx FPGA Processing 32 bit floating point
AD / DA	24 bit / 96 kHz
Latency	0,8 ms (analog in to analog out)
Usable Range	50 Hz - 20 kHz (- 6 dB)
Tuning Frequency <small>excursion minimum</small>	60 Hz
X - Overpoint <small>acoustical</small>	Depends on preset
Coverage <small>horizontal / vertical</small>	90° x 60° - rotatable
Connectors	XLR in/thru, Ethercon Powercon in/out
Handles	1 x
Rigging / Fittings	2 x M10 / 7 x M8 35 mm pole mount
Weight	16 kg
Size <small>height x width x depth</small>	60,6 x 36,0 x 34,0 cm
Order No.	00260/II/dp



DIMENSIONS

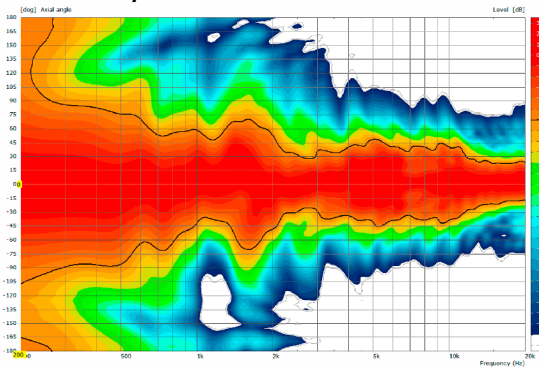


Presets - Frequency Response

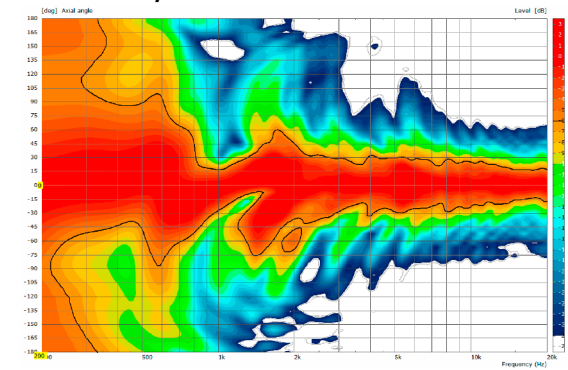


COVERAGE PATTERNS

2D Directivity Plot - horizontal



2D Directivity Plot - vertical



The A 6 dp features integrated digital amplifier electronics with a DSP controller (dp = digitally powered). Various factory-configured presets and volume settings can be called up directly on the box or via a network connection.

High-grade electronic components from the industrial sector and a first-class circuit design ensure excellent audio quality with low distortion and a minimal noise floor. Highly efficient and “intelligent” limiter systems ensure optimum protection against overload, without restricting the possibilities offered by this high-performance sound system.

 [Presets > Quick Start Manual](#)

Level

Adjustment in 3 dB steps (-12 dB to +6 dB).

Status

Mute LED

Red light when the system is muted or under technically critical conditions.

Limit LED

Yellow light when the limiter is restricting the level.

Signal LED

Green light when the input signal exceeds -20 dBu

Power LED

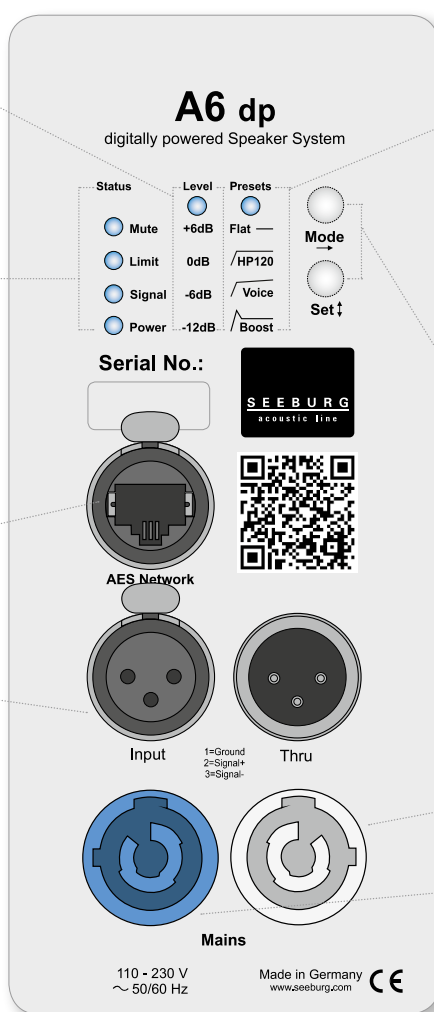
Green light when the system is switched on.

Ethercon

Interface for remote control and audio transfer via ethernet (AES 67).

XLR

- Symmetrical analog input.
- Effective filter protection against HF interference and DC Voltages.
- Electronically balanced to prevent noise.



Presets

Flat

This setting provides a linear frequency response with a neutral sound characteristics. Standard setting for many applications.

HP 120 (high pass filter)

Activates a high pass filter (cut-off frequency 120 Hz) for use in combination with a subwoofer

Voice

Optimises the frequency response in the mid and high frequency range for improved speech intelligibility.

Boost

The same neutral response as the „Flat“ setting, but with the addition of a bass boost.

Mode - key

Switches between control modes: Status, Level and Presets.

Set - key

Setting of various values and Mute on / off.

Powercon (blue)

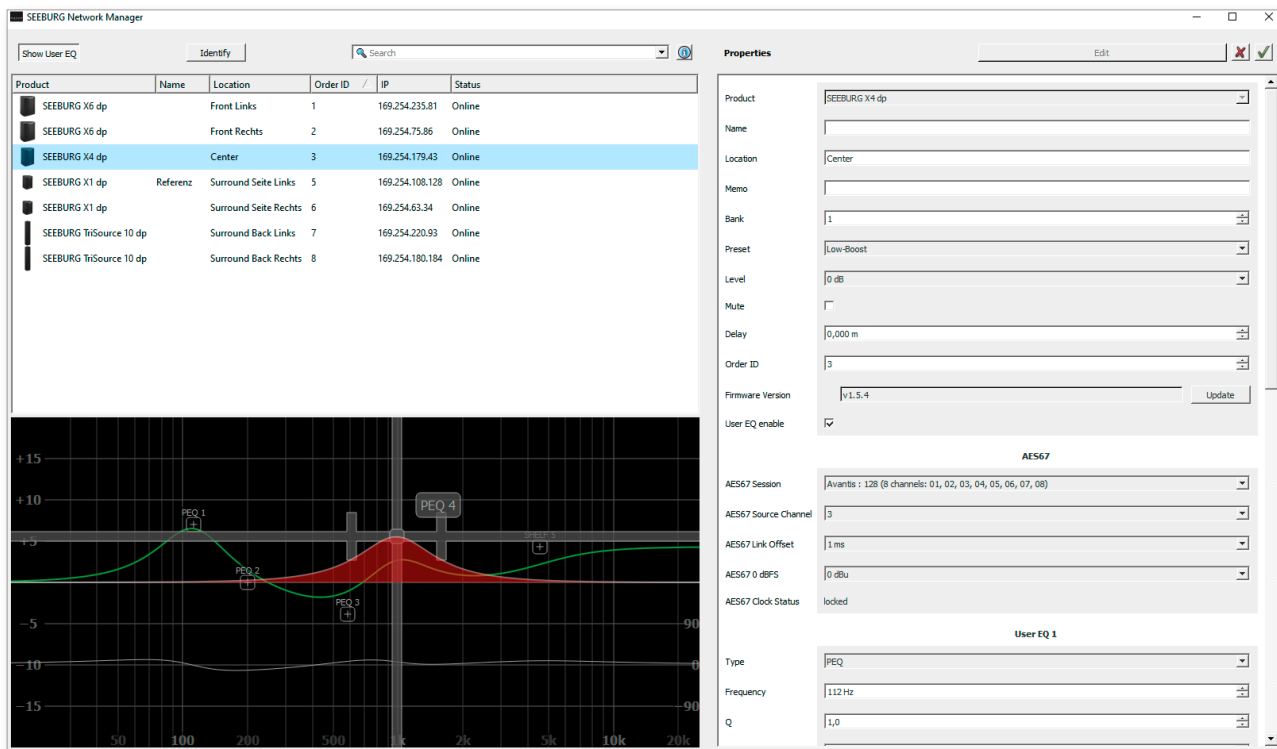
Power supply
~ 110-230 V / 16 A max.

Powercon (grey)

~ 110-230 V / 16 A max.
loop through connector

SEEBURG NETWORK Manager

With the Software SEEBURG Network Manager all selfpowered systems can be controlled via network.



Features:

- > **Remote control** of functions such as recalling presets and banks, level control and mute, and locking the controls on the loudspeakers.
- > **Visual display** of all systems connected to the control network.
- > Storable names and location labels with a **global search function**.
- > **Selection of loudspeakers** in the list for simultaneous set-up and control changes.
- > **Fully parametric user EQs and delay settings** for time alignment, with a graphical user interface
- > **Time Delay** with up to **2.8 seconds runtime**.
- > **Audio-over-Ethernet (AoE) via AES 67.**
- > Connection with **media control systems via API**.
- > Basic **network settings**.
- > **Documentation** is available **online**.
- > **Identification function** by way of flashing LEDs on the dp loudspeaker systems.
- > **Firmware updates** can be applied.



 [SEEBURG Network Manager > Quick Start Manual \(pdf\)](#)

AES NETWORK interface

All selfpowered systems are equipped as standard with an **AES Network interface**.

This is used for **remote control** via the **SEEBURG Network Manager** and for **Audio-over-Ethernet (AoE) audio transmission via AES 67.**



AES Network



Flying Bracket

for A 6 / A 6 dp / TSM 12
incl. (black version: 2 x M10 x 20
handle screws, white version:
2 x M10 x 20 socket head screws)
Order No. **01216/set/w** (RAL 9010)
Order No. **01216/set**



Flying Bracket

for A 6 / A 6 dp / TSM 12
horizontal alignment,
incl. accessories
Order No. **01216/H/set/w** (RAL 9010)
Order No. **01216/H/set**



Flying Bracket

for AF 6 horizontal alignment,
incl. (2 x M10 x 20 socket head
screws, 2 x rubber washers)
Order No. **01216/H/AF/w** (RAL 9010)
Order No. **01216/H/AF**



Handle Screw

for flying brackets, adjustable
Order No. **08375/20** (M10 x 20)



Rubber Washer

for flying brackets,
5 mm x 40 mm Ø
Order No. **01206**



Knurled Head Nut

reduction screw for fastening
M10 Pole Mount Adapter (08126)
Order No. **73755**



Pole Mount Adapter

35 mm Ø → M10 x 16 mm,
M8 x 20 star knob screw
Order No. **08126**
35 mm Ø → M10 x 16 mm
Order No. **08126/II**



Steel Safety

6 mm x 600 mm, black,
max. load 22 kg (BGI 810-3),
quick connector undetachably
Order No. **01376/6**



Quick Trigger Clamp

max. load 100 kg
Order No. **01223/100 kg**



Quick Trigger Clamp - small

M10, max. load 20 kg
Order No. **01223/20 kg**



Ring Screw

M10– DIN 580
Order No. **73700** (zincd)
Order No. **73700/sw** (black zincd)



TV Spigot

10 mm internal thread,
28 mm Ø
Order No. **08128**



Chain Fastener

VBS 7 mm
Order No. **01378**

ACCESSORIES A 6 dp

Wall Mount



bar: 269 mm, max. load 40 kg,
incl. (M10 x 70 mm socket head screw,
M10 hex lock nut and flat washer)

Order No. **08130/F/269/w** (RAL 9010)
Order No. **08130/F/269**

Wall Mount



with tilt unit, max. load 40 kg
Order No. **08130**

Speaker Stand



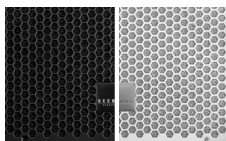
incl. wind up,
height 138,5 to 218 cm,
max. load 50 kg,

Order No. **03011**

height 137,5 to 218,5 cm,
max. load 50 kg,

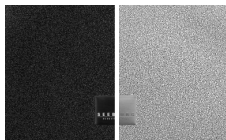
Order No. **03010**

Honeycomb Grilles



for A 6 front replacement.

Foam behind grille
Order No. **97010/hex/compl**
Order No. **97010/hex/compl/w**
(RAL 9010)



Foam in front of grille
Order No. **97010/compl.**
Order No. **97010/compl/w**
(RAL 9010)

Cover



for A 6 / A 6 dp / TSM 12,
padded

Order No. **01244**

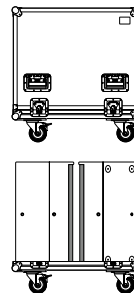
Rain Cover



for A 6 / A 6 dp / TSM 12

Order No. **01244/outdoor**

Flight Case



for 2 pcs. TSM 12 / A 6
heavy duty, 9 mm birch multiplex, PVC
coated, 6 x recessed sprung handles,
4 x butterfly catches, 4 x 100 mm blue
wheels, 2 pcs. with brake, partition
walls, interior lined with felt.

Order No. **16010 P**

Hybrid Cable System



PowerCon-PowerCon / XLR-XLR

2,5 m	Order No. 08462
5 m	Order No. 08464
10 m	Order No. 08466
15 m	Order No. 08468

