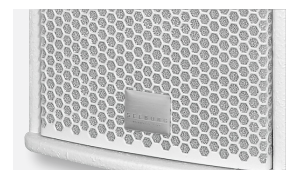
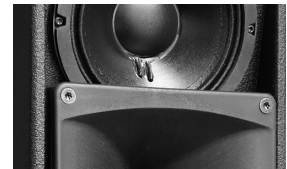
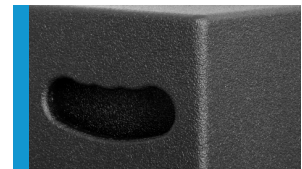




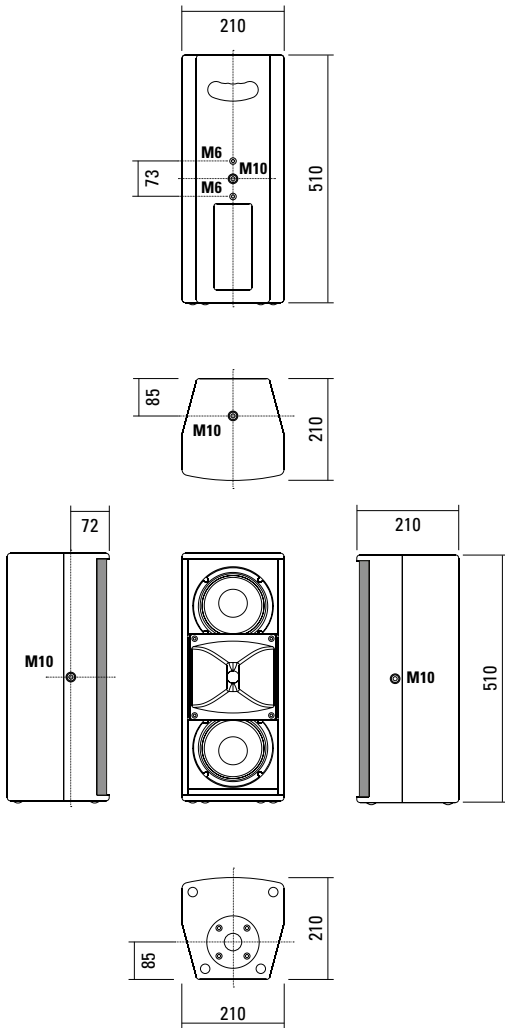
An unobtrusively elegant and yet powerful system for installations and corporate presentations. The revised 2 x 6.5" / 1" configuration with larger horn provides improved coverage and speech intelligibility and longer throw. Four M10 mounting points, combined with our range of mounting accessories, allow fast and simple horizontal or vertical installation. The option is available for a fifth M10 mounting point in place of the standard loudspeaker stand socket.

## PRODUCT SPECIFICATIONS

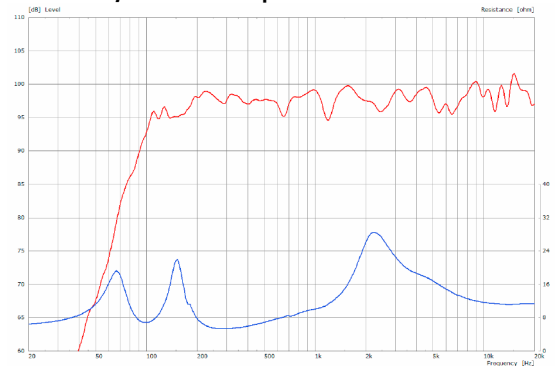
<b>Speaker Components</b>	2 x 6,5" Nd (2" VC) / 1" (1,7" VC)
<b>Description</b>	HiMid Sound System
<b>Power</b> AES / Peak	400 W / 1200 W
<b>Impedance</b> nominal	8 Ω
<b>SPL</b> 1 W / Peak @ 1 m	97 dB / 128 dB
<b>Usable Range</b>	80 Hz - 19 kHz
<b>Tuning Frequency</b> excursion minimum	95 Hz
<b>X - Overpoint</b> acoustical	1,5 kHz
<b>Coverage</b> horizontal / vertical	90° x 60° - rotatable
<b>Connectors</b>	2 x Speakon NL4MP in/out Coding: 1 +/- HiMid, 2 +/- loop thru
<b>Handles</b>	1 x
<b>Rigging / Fittings</b>	4 x M10, 2 x M6 35 mm pole mount
<b>Weight</b>	9,5 kg
<b>Size</b> height x width x depth	51,0 x 21,0 x 21,0 cm
<b>Order No.</b>	<b>00230/III</b>



## DIMENSIONS

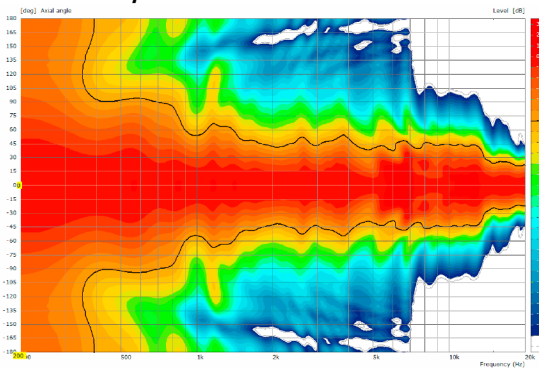


Sensitivity 1 W @ 1 m + Impedance

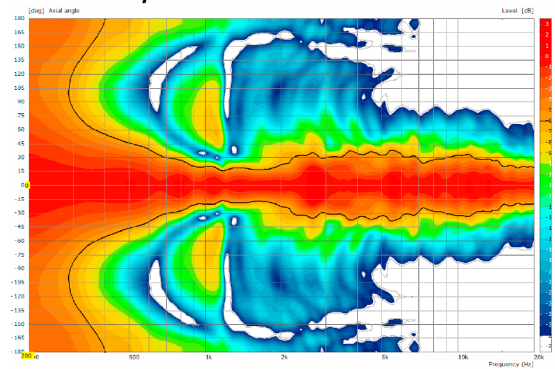


## COVERAGE PATTERNS

2D Directivity Plot - horizontal



2D Directivity Plot - vertical



**Flying Bracket**



for A 2,  
horizontal alignment,  
incl. (2 x M10 x 20 socket head  
screws, 2 x rubber washers, 1 x plate)

Order No. **01214/H/set/w** (RAL 9010)  
Order No. **01214/H/set**

**Flying Bracket**



for A 2,  
incl. (black version: 2 x M10 x 20  
knurled screws, 2 x rubber washers  
white version: 2 x M10 x 20 socket  
head screws, 2 x rubber washers)

Order No. **01214/set/w** (RAL 9010)  
Order No. **01214/set**

**Knurled Screw**

M10 x 20 mm

Order No. **73750/w** (RAL 9010)  
Order No. **73750**



**Rubber Washer**

for flying brackets,  
5 mm x 40 mm Ø

Order No. **01206**



**Plate**

for A 2 / A 3 flying brackets,  
horizontal alignment,  
replacement for pole mount flange,  
110 mm Ø flange with M10 nut

Order No. **08119/M10/w** (RAL 9010)  
Order No. **08119/M10**



**Knurled Head Nut**

reduction screw for fastening  
M10 Pole Mount Adapter (08126)

Order No. **73755**



**Pole Mount Adapter**

35 mm Ø → M10 x 16 mm,  
M8 x 20 star knob screw

Order No. **08126**

35 mm Ø → M10 x 16 mm

Order No. **08126/II**



**Flange**

with ball and socket joint,  
with additional locking screw,  
M10 x 15, max. load 15 kg

Order No. **08125**



**Quick Trigger Clamp**

max. load 100 kg

Order No. **01223/100 kg**



**Quick Trigger Clamp - small**

M10, max. load 20 kg

Order No. **01223/20 kg**



**Truss Clamp**

incl. M10 Adapter,  
max. load 15 kg

Order No. **01221**



**Steel Safety**

4 mm x 600 mm, black,  
max. load 10 kg (BGI 810-3),  
quick connector undetachably

Order No. **01376/4**



**Ring Screw**

M10– DIN 580

Order No. **73700** (zincd)

Order No. **73700/sw** (black zincd)



**TV Spigot**

10 mm internal thread,  
28 mm Ø

Order No. **08128**



## ACCESSORIES A 2

### Wall Mount



bar: 269 mm, max. load 40 kg,  
incl. (M10 x 70 mm socket head screw,  
M10 hex lock nut and flat washer)

Order No. **08130/F/269/w** (RAL 9010)  
Order No. **08130/F/269**

### Wall Mount



for permanent installation,  
incl. tilt angle stop,  
M10, max. load 15 kg

Order No. **08131/F/w** (RAL 9010)  
Order No. **08131/F**

### Wall Mount



2 x M6 fixing holes (d=73 mm),  
1 x M10 fixing hole (center),  
max. load 25 kg

Order No. **03034/w** (RAL 9010)  
Order No. **03034**

### Wall Mount



ball and socket joint flange (08125)  
+ 08125/plate

Order No. **08125/set**

### Spacer



for Wall Mount (03034)  
polyurea coated

Order No. **03034/spc**

### Cover



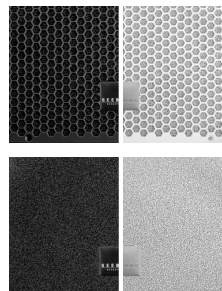
for A 2, padded  
Order No. **01243**

### Rain Cover



for A 2,  
with zipper  
Order No. **01243/outdoor**

### Honeycomb Grilles



for A 2 front replacement.

Foam behind grille

Order No. **97004/hex/compl**

Order No. **97004/hex/compl/w**  
(RAL 9010)

Foam in front of grille

Order No. **97004/compl**

Order No. **97004/compl/w**  
(RAL 9010)



Spacer -> Wall Mount