



Universal small format loudspeaker for high quality music and speech reproduction. Well suited for applications in Pubs, Bistros and Cafes, and as a universal near field system. 3 x M10 mounting points provide for easy installation. The A 1 is also available in the TR-version with 100 V transformer.

PRODUCT SPECIFICATIONS

Speaker Components	6,5" Nd / 1,1"
Description	Multi Media Sound System
Power AES / Peak	200 W / 600 W
Impedance nominal	8 Ω (16 Ω optional)
SPL 1 W / Peak @ 1 m	93 dB / 121 dB
Usable Range	75 Hz - 19 kHz (-10 dB)
Tuning Frequency excursion minimum	91 Hz
X - Overpoint acoustical	2,3 kHz
Coverage horizontal / vertical	90° - conical
Connectors	2 x Speakon NL4MP in/out Coding: 1 +/- HiMid, 2 +/- loop thru
Rigging / Fittings	3 x M10
Weight	5,5 kg
Size height x width x depth	33,9 x 20,4 x 20,4 cm
Order No.	00210/II 00210/TR/II (with 100 V transformer)



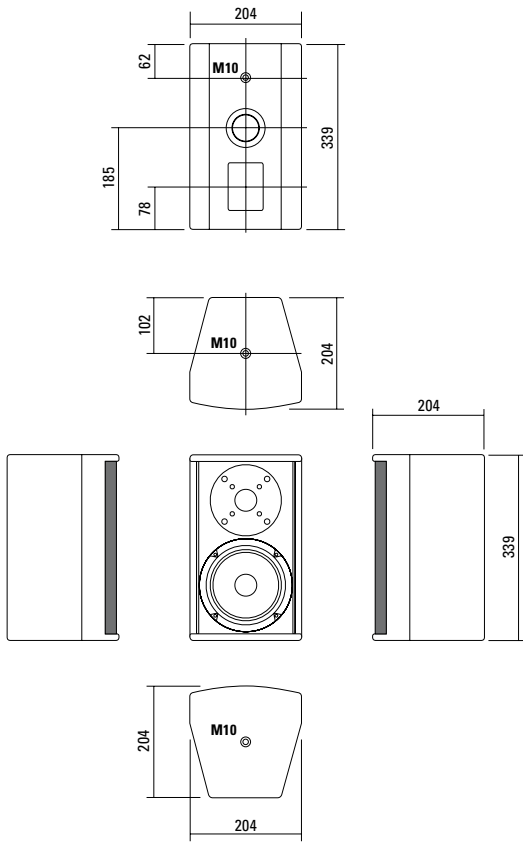
A total of three M10 flying points can be utilised for mounting the extensive accessories.



A deeper low end response can be achieved by changing the rear-mounted bass reflex tunnel.



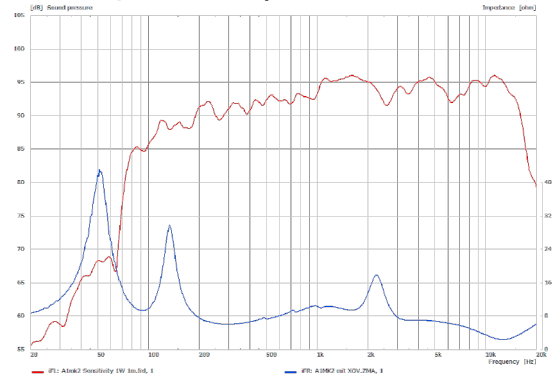
DIMENSIONS



Controller Setups:

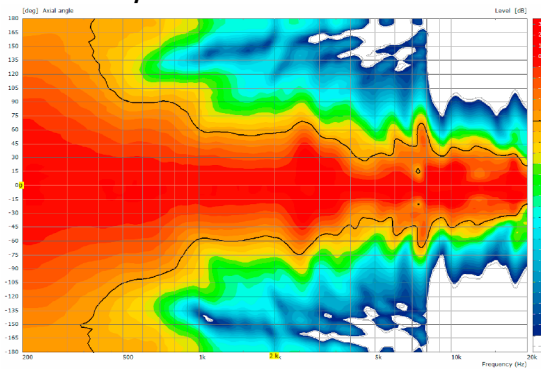
<https://www.seeburg.com/en/downloads>

Sensitivity 1 W @ 1 m + Impedance

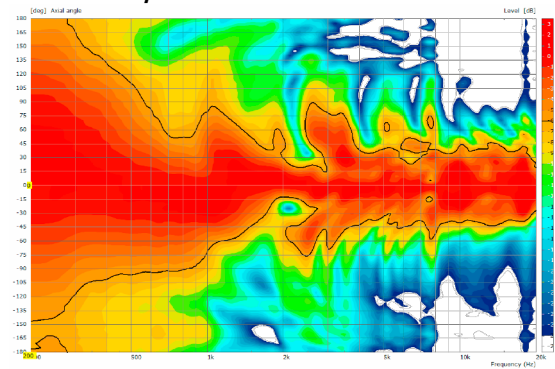


COVERAGE PATTERNS

2D Directivity Plot - horizontal



2D Directivity Plot - vertical



Flying Bracket



for A 1 / TS Nano,
horizontal alignment,
incl. (2 x M10 x 20 socket head
screws, 2 x 40 mm rubber washers)
Order No. **01210/H/set/w** (RAL 9010)
Order No. **01210/H/set**

Flying J-Bracket



for A 1 / GL 8 / X 1 / X 2 / TS Nano,
horizontal and vertical alignment,
incl. (white version: 1 x M10 x 20
socket head screws, black version:
1 x M10 x 20 adjustable handle screw)
Order No. **01200/set/w** (RAL 9010)
Order No. **01200/set**

Handle Screw



for flying brackets, adjustable
M10 x 20
Order No. **08375/20**

Rubber Washer



for flying brackets,
5 mm x 40 mm Ø
Order No. **01206**

Knurled Head Nut



reduction screw for fastening
M10 Pole Mount Adapter (08126)
Order No. **73755**

Pole Mount Adapter



35 mm ø → M10 x 16 mm,
M8 x 20 star knob screw
Order No. **08126**
35 mm ø → M10 x 16 mm
Order No. **08126/II**

Flange



with ball and socket joint,
with additional locking screw,
M10 x 15, max. load 15 kg
Order No. **08125**

TV Spigot



10 mm internal thread,
28 mm Ø
Order No. **08128**

Quick Trigger Clamp



max. load 100 kg
Order No. **01223/100 kg**

Quick Trigger Clamp - small



M10, max. load 20 kg
Order No. **01223/20 kg**

Truss Clamp



incl. M10 Adapter,
max. load 15 kg
Order No. **01221**

Steel Safety



4 mm x 600 mm, black,
max. load 10 kg (BGI 810-3),
quick connector undetachably
Order No. **01376/4**

Chain Fastener



VBS 7 mm
Order No. **01378**

Ring Screw



M10– DIN 580
Order No. **73700** (zincd)
Order No. **73700/sw** (black zincd)



ACCESSORIES A 1

Wall Mount

ball and socket joint flange (08125)
+ 08125/plate

Order No. **08125/set**



Wall Mount

for permanent installation,
incl. tilt angle stop,
M10, max. load 15 kg

Order No. **08131/F/w** (RAL 9010)

Order No. **08131/F**



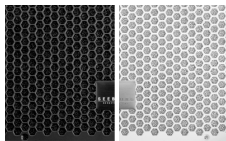
Honeycomb Grilles

for A 1 front replacement.

Foam behind grille

Order No. **97002/hex/compl**

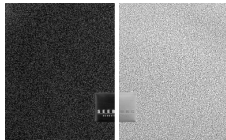
Order No. **97002/hex/compl/w**
(RAL 9010)



Foam in front of grille

Order No. **97002/compl**

Order No. **97002/compl/w**
(RAL 9010)



Bag

for 2 x A 1 / 2 x TS Nano, padded
with pocket for accessories

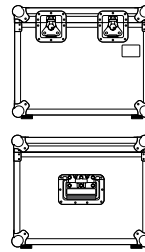
Order No. **01249**



Flight Case Trunk

for 4 pcs. TS Nano / A 1,
with flying bracket, standard, 7 mm
birch multiplex, PVC coated, 2 x
recessed sprung handles, 2 x butterfly
catches, rubber feet, partition walls,
interior lined with felt.

Order No. **16005**



Flight Case Trunk

for 2 pcs. TS Nano / A 1,
with flying bracket and flange,
standard, 7 mm birch multiplex, PVC
coated, 2 x recessed sprung handles,
2 x butterfly catches, rubber feet,
partition walls, interior lined with felt.

Order No. **16006**

